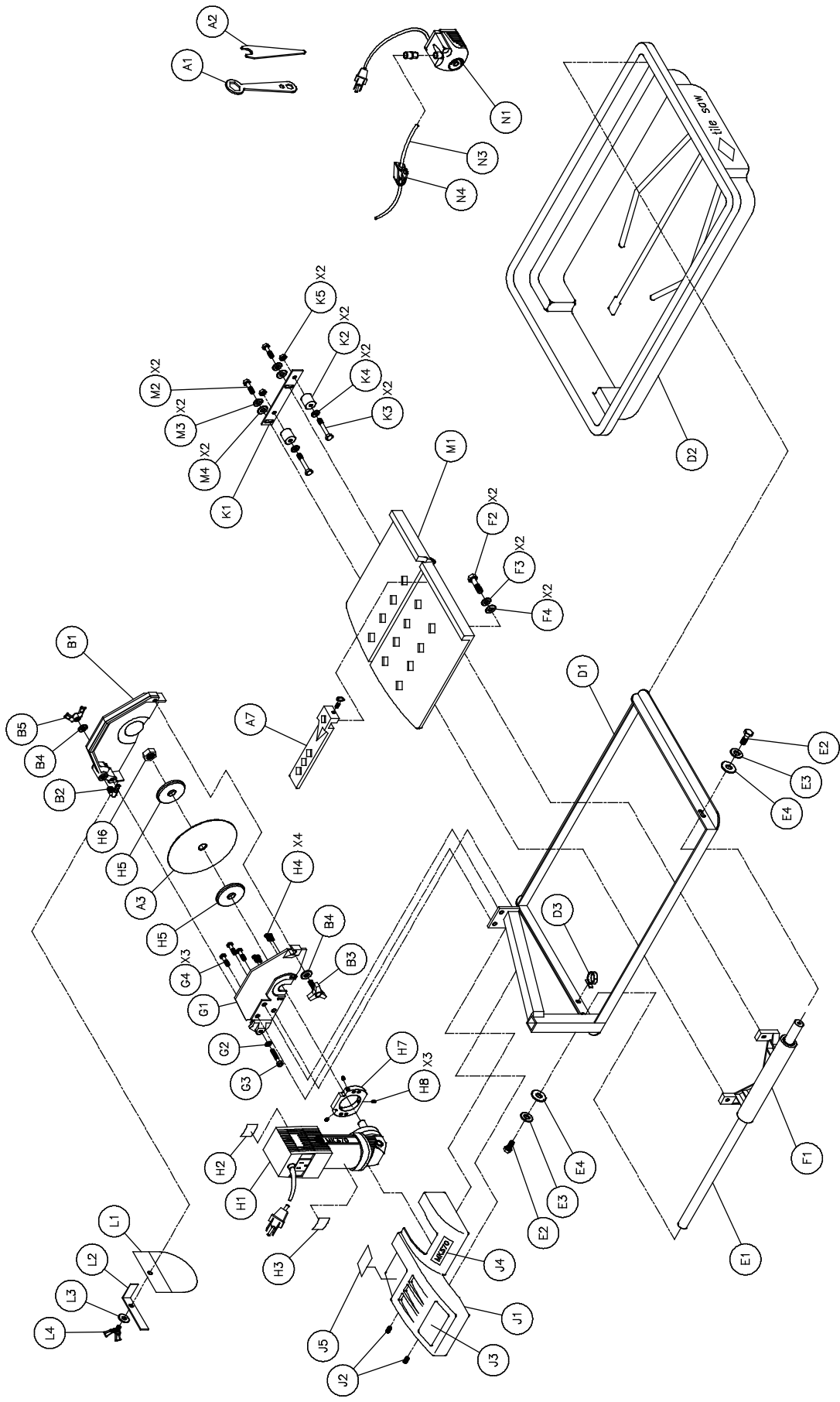


MK-370 TILE SAW OWNERS MANUAL PARTS LIST & OPERATING INSTRUCTIONS



Revision 200	05.2010
Manual Part# 156760	

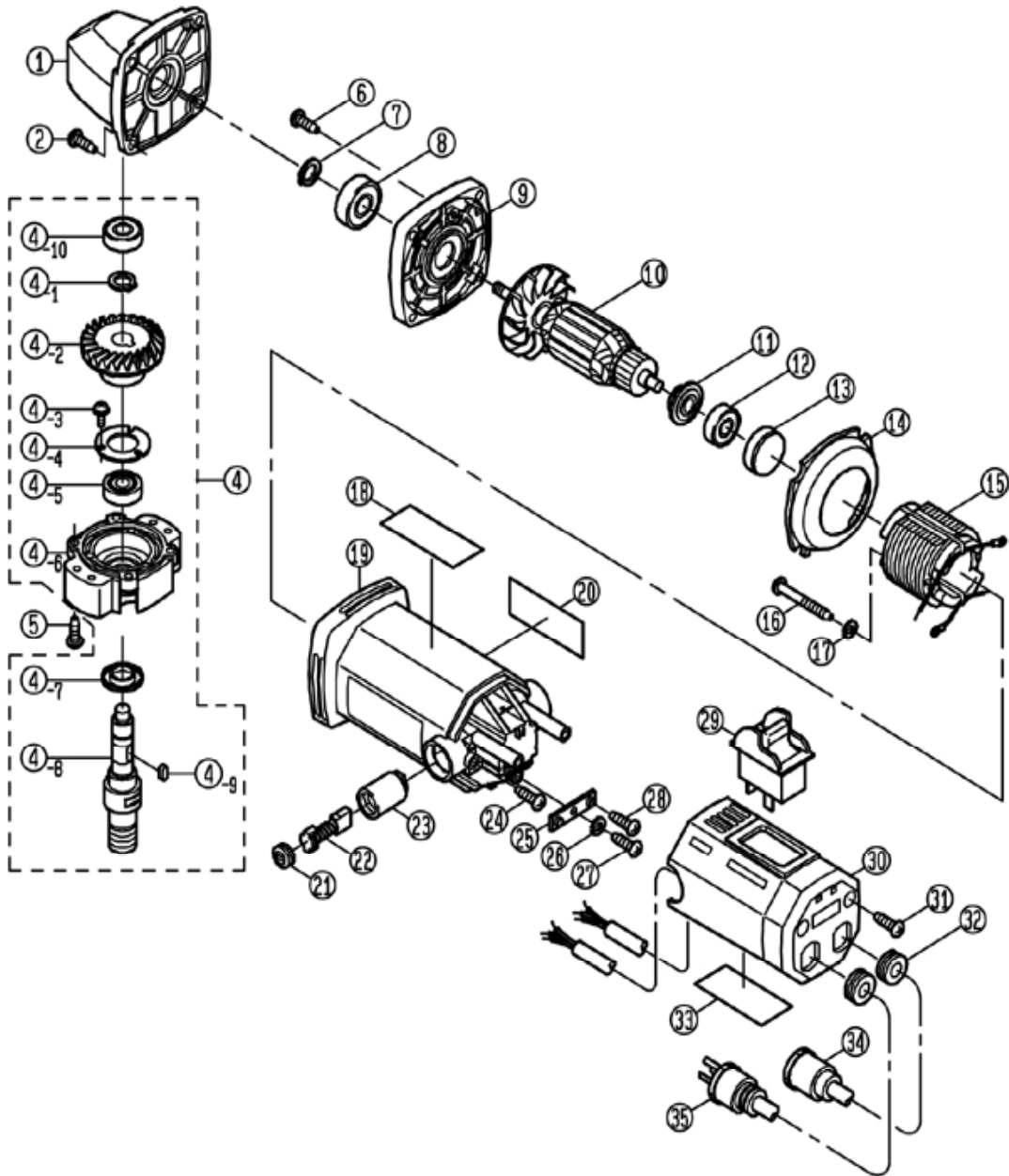
Caution: Read all safety and operating instructions before using this equipment. This parts list **MUST** accompany the equipment at all times.



ITEM	DESCRIPTION	PART #	QTY
A	Accessories	n/a	-
A1	Wrench, Blade Nut, 15/16 Boxed End	134684	1
A2	Wrench, Blade Shaft, 11/16 Open End	153450	1
A3	Blade, 7 Dia X 5/8 arbor	153441	1
A4	Owner's Manual, 370	156760	1
A5	Warranty Card	155037	1
A6	Tag, Saw Hang, 370	156750	1
A7	Assembly, Rip Guide	134551-MK	1
B	Assembly, Blade Guard, 7"	154811-MK	1
B1	Guard, 7" Blade	154811	1
B2	Elbow, 1/8 MNPT X 1/4 BARB 90° Brass	154652	1
B3	Knob, Davies	151681	1
B4	Washer, 5/16 SAE Flat	151754	2
B5	Wingnut, 5/16-18 Nylock	151746	1
D	Frames	n/a	-
D1	Frame	155792	1
D2	Pan, Water	155791	1
D2A	Pan, Water, Deep	157210	1
D3	Cord Clip, 1/4 Push Mount	157259	1
E	Assembly, 5/8 Guide Bar	151739-MK	1
E1	Bar, Guide, 5/8 Dia	151739	1
E1A	Bar, Guide, 5/8 Dia, Extended	157486	1
E2	Screw, 5/16-18 X 1 Hex Head Cap	151743	2
E3	Washer, 5/16 Split Lock	151747	2
E4	Washer, 5/16 SAE Flat	151754	2
F	Linear Bearing	n/a	-
F1	Bearing, Linear, 5/8 Dia (comp)	157126	1
	F1A Bearing, Multilube	151781	2
F2	Screw, 5/16-18 X 1 Hex Head Cap	151743	2
F3	Washer, 5/16 Split Lock	151747	2
F4	Washer, 5/16 SAE Flat	151754	2
G	Assembly, Motor Mount	155811-MK	1
G1	Motor Mount	157403	1
G2	Washer, 5/16 Split Lock	151747	1
G3	Screw, 5/16-18 X 2 1/2 Hex Head Cap, Full Thread	151748	1
G4	Screw, 1/4-20 X 1/2 Flat Head Phillips Cap	155812	3
H	Motors	n/a	-
H1	Motor, 120v/7.4a, 370	156428-R	1
H2	Label, Caution, GFCI, 1 X 2 1/8	155678	1
H3	Label, Caution, Receptacle, 1 X 2 1/8	154822	1
H4	Screw, 10-32 X 5/8 Flat Head Phillips Cap,	157554	4
H5	Flange, Blade	135830	2
H6	Nut, 5/8-18 UNF	135848	1
H7	Adapter, Motor, 370	156703	1
H8	Screw, 10-32 X 1/4 Socket Head Set, Cup Point	156715	3

ITEM	DESCRIPTION	PART #	QTY
H9	Label, 370 Model	156692	1
H10	Plug, CEE 7/7 16a 240v	153687	1
J	Post Cover	n/a	-
J1	Casting, Cover, Post, 370	156748	1
J2	Screw, 10-24 X 3/8 Socket Head Set, Cup Point	156715	2
J3	Label, Warning, Read Owner's Manual	155806	1
J4	Label, 370 Model	156692	1
J5	Label, Serial Number, UL/CSA Mark	157249-04	1
K	Assembly, Roller Wheel, Double	156586	1
K1	Bracket, Roller Wheel	156522	1
K2	Wheel, Roller	151799	2
K3	Screw, 1/4-20 X 1 1/2 Hex Head Cap	151914	2
K4	Washer, 1/4 SAE Flat	151915	2
K5	Nut, 1/4-20 Hex	151893	2
L	Assembly, Splash Curtain	155901-MK	1
L1	Curtain, Splash	134841	1
L2	Bracket, Splash Curtain	155901	1
L3	Washer, 1/4 SAE Flat	151915	1
L4	Wingscrew, 1/4-20 X 1/2	151888	1
M	Table	n/a	-
M1	Table, Composite, 370/470	156536	1
M2	Screw, 5/16-18 X 1 Hex Head Cap	151743	2
M3	Washer, 5/16 Split Lock	151747	2
M4	Washer, 5/16 SAE Flat	151754	2
N	Assembly, PES-100 120v Water Pump	155987-MK	1
N1	Pump, Water, PES-100 120v	155987	1
N1A	Pump, Water, 100v	154812	1
N1B	Pump, Water, 230v	156181	1
N3	Hose, Vinyl, 1/4 ID	132951	2'
N4	Clamp, Flow, 1/4-1/2	154394	1
N5	Owner's Manual, Water Pump	155745	1

Ryobi Motor



ITEM	DESCRIPTION	PART #	QTY
1	GEAR SHAFT	6110298	1
2	PARALLEL KEY 5X5X14	6100224	1
3	GEAR CASE COVER	6821489	1
4	FLAT TAPPING SCREW (S) M4X12	9150412	4
5	WASHER t=1.6	6901213	1
6	BALL BEARING #6203LLH	9896203	1
7	BEARING PLATE t=1.6	6155821	1
8	TAPPING SCREW (S) M4X10	9040410	4
9	COLLAR	6900120	1
10	FINAL GEAR	6200907	1
11	RETAINING RING S-17	9511700	1
12	BALL BEARING #6001LLB	9846001	1
13	GEAR CASE	6821486	1
14	BUSH	6760285	1
15	O RING S-35	6930245	1
16	BALL BEARING #6202LLB	9846202	1
17	WASHER t=1.6	6901212	1
18	O-RING P-16	9760016	1
19	ARMATURE 120V	6034942	1
20	FAN CASING	6490464	1
21	FIELD COIL 120V	6502980	1
22	TAPPING SCREW (B) M5X75	9060575	2
23	DUST COLLAR	6901211	1
24	BALL BEARING #6200LLB	9846200	1
25	BEARING HOUSE	6190868	1
26	O RING S-30	6930247	1
27	MOTOR HOUSING	6803938	1
28	NAME PLEAT 120V	6917563	1
29	SPRING WASHER M6	9550600	4
30	PHILLIPS PAN SCREW M6X25	9000625	4
31	TAPPING SCREW (S) M4X14	9040414	2
32	TAPPING SCREW (B) M4X16	9060416	2
33	BRUSH HOLDER	6570133	2
34	CARBON BRUSH 613GN	6541667	1
35	BRUSH CAP	6570134	2
500	FLANGE	6940756	1
501	HEX BOLT M10X20	6131616	1
502	WASHER 10.5X21X2	9571000	1
503	SINGLE-END WRENCH 17	6240533	2