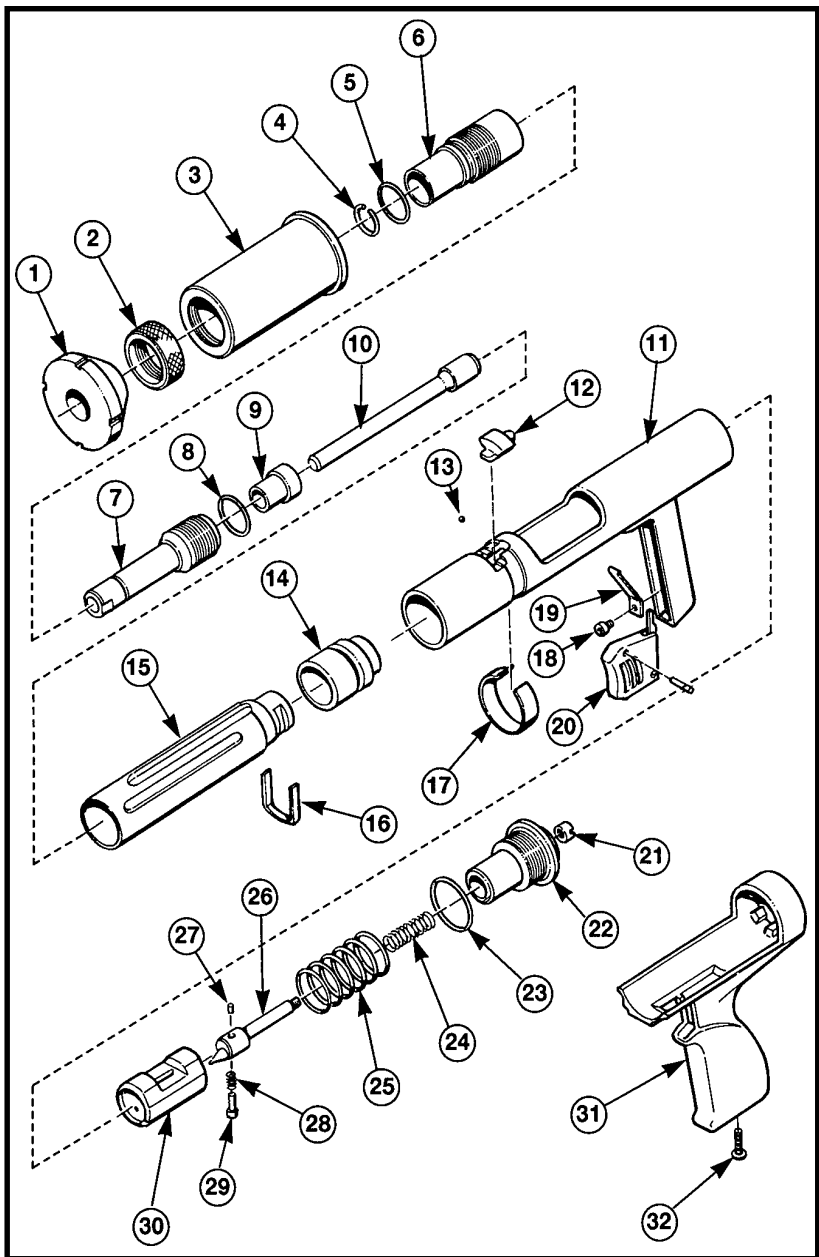


PARTS SCHEMATIC



PARTS SCHEMATIC

PARTS LISTING / MAINTENANCE

MD380 TOOL PARTS LIST

KEY	PART NO.	DESCRIPTION
1	315370	SPALL GUARD
2	315310	THREAD PROTECTOR
3	315350	HEAT RESISTANT SHIELD
4	315180	RETAINING RING
5	312650	O-RING
6	315240	MUZZLE BUSHING SHROUD & O-RING
7	315190	MUZZLE BUSHING
8	312650	O-RING
9	315120	BUFFER
10	315160	PISTON
11	315000	RECEIVER ASSEMBLY*
12	315110	PAWL
13	315360	RETENTION BALL
14	315100	EJECTOR
15	315090	BARREL
16	304680	EJECTOR CLIP
17	315150	PAWL RETAINING CLIP
18	315140	RETURN SPRING SCREW
19	315200	TRIGGER RETURN SPRING
20	311740	TRIGGER ASSEMBLY WITH ROLL PIN
21	315070	FIRING PIN NUT
22	315060	BREECH PLUG
23	312650	O-RING
24	315220	FIRING PIN SPRING
25	315230	BREECH BLOCK SPRING
26	315040	FIRING PIN
27	33671	SEAR ROLL PIN
28	33659	SEAR SPRING
29	81649	SEAR
30	315030	BREECH BLOCK
31	315080	RUBBER HANDLE
32	315250	HANDLE SCREW

* FACTORY REPLACEMENT ONLY

MAINTENANCE

**IMPROPERLY MAINTAINED TOOL CAN CAUSE SERIOUS INJURIES
TO TOOL OPERATORS AND BYSTANDERS**

CLEAN TOOL DAILY

NORMAL CLEANING

All front end parts shown in the disassembly section are to be cleaned daily or more often if necessary to maintain best tool function. Remove all dirt and carbon buildup with detergent oil and a wire brush and wipe parts dry with a clean rag. Check all parts for wear or damage before reassembly and replace or repair any worn or damaged parts.

COMPLETE CLEANING / GENERAL MAINTENANCE

Heavy use or constant exposure to dirt may require that the tool be cleaned more extensively and more often to restore the tool to normal operation. This maintenance should be performed every six months or more often if tool is subjected to heavy use.

**ALWAYS FUNCTION TEST THE TOOL AFTER PERFORMING ANY SERVICE.
SEE PAGE 9 FOR FINCTION TEST DETAILS.**

PARTS LISTING / MAINTENANCE