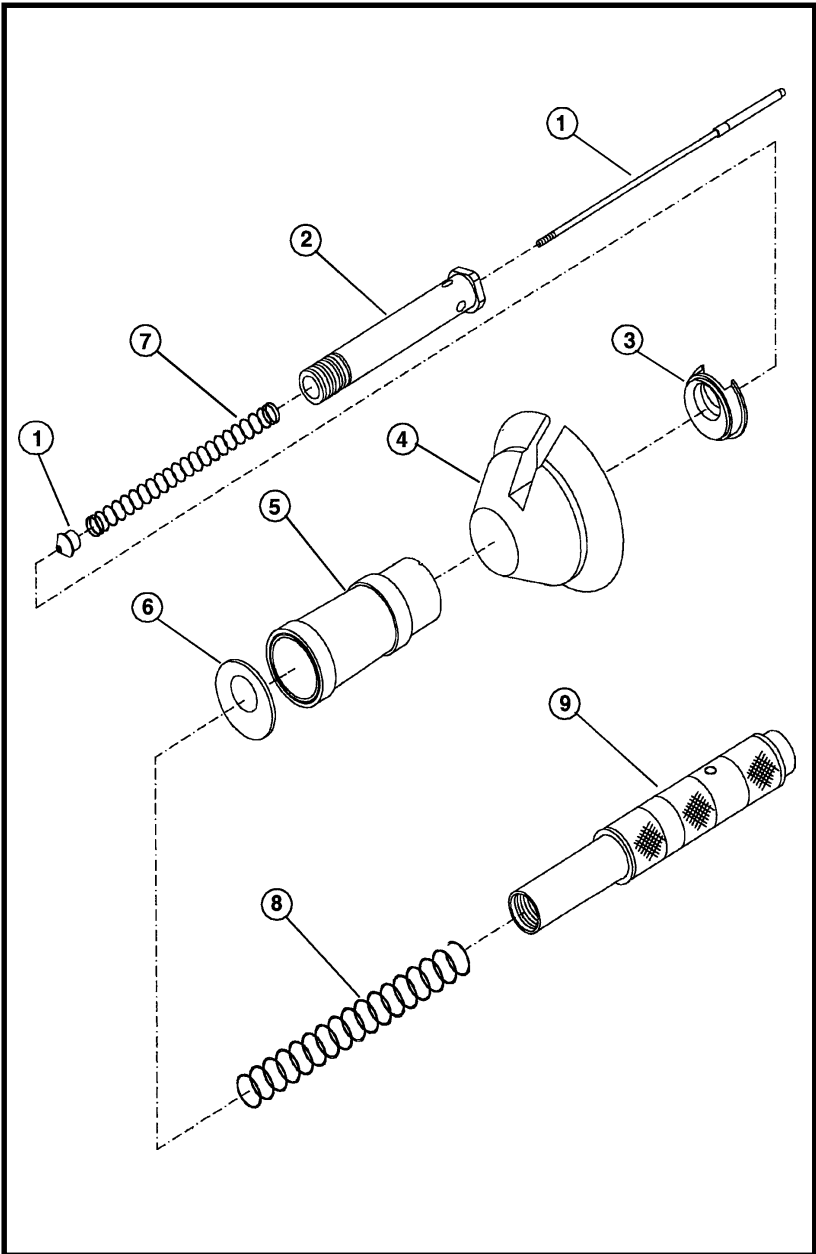


PARTS SCHEMATIC



PARTS SCHEMATIC

PARTS LISTING / MAINTENANCE

MODEL L1600 CEILING MASTERTOOL PARTS LIST

KEY	PART NO.	DESCRIPTION
1	L 1603	EJECTOR PIN AND RETAINER NUT
2	L 1602	BARREL
3	L 1607	FRONT END CAP
4	L 1628	DUST SHIELD
5	L 1606A	GAS EXPANSION CYLINDER SHIELD
6	L 1608	REAR END CAP
7	L 1604	EJECTOR PIN SPRING (7/16" DIA.)
8	L 1609	HANDLE SPRING (3/4" DIA.)
9	L 1610	HANDLE ASSEMBLY

MAINTENANCE

**IMPROPERLY MAINTAINED TOOLS CAN CAUSE SERIOUS INJURIES
TO TOOL OPERATORS AND BYSTANDERS**

CLEAN TOOL DAILY OR MORE OFTEN IF NEEDED

ALWAYS CHECK THE TOOL BEFORE PERFORMING ANY SERVICE OR
CLEANING TO BE SURE THAT IT IS NOT LOADED.

ALWAYS WEAR SAFETY GOGGLES WHILE CLEANING OR SERVICING THE
TOOL.

NORMAL CLEANING

THE TOOL SHOULD BE CLEANED AT LEAST ONCE A DAY, OR MORE OFTEN, TO REMOVE CARBON AND DIRT FROM THE THE INSIDE AND OUTSIDE OF THE BARREL AND FROM THE INSIDE OF THE GAS EXPANSION CHAMBER.

All parts shown in the disassembly section are to be cleaned daily with a good detergent oil and wire brush. Remove all dirt and carbon buildup and wipe parts dry with a clean rag. Check all parts for wear or damage before reassembly and replace or repair any worn or damaged parts.

When wire brushing inside the barrel, take care not to scratch or damage the bore or chamber areas. Doing so will make load ejection more difficult and cause a more rapid buildup of carbon and dirt.

COMPLETE CLEANING / GENERAL MAINTENANCE

Heavy use or constant exposure to dirt and debris may require that the tool be cleaned more extensively. Complete disassembly and cleaning of all parts may be necessary to restore the tool to normal operation. General maintenance should be performed every six months or more often if the tool is subjected to heavy use. Contact your authorized Ramset Distributor for assistance.

**ALWAYS FUNCTION TEST THE TOOL AFTER PERFORMING ANY SERVICE.
SEE PAGES 5 AND 9 FOR DETAILS ON THE FUNCTION TEST.**

PARTS LISTING / MAINTENANCE