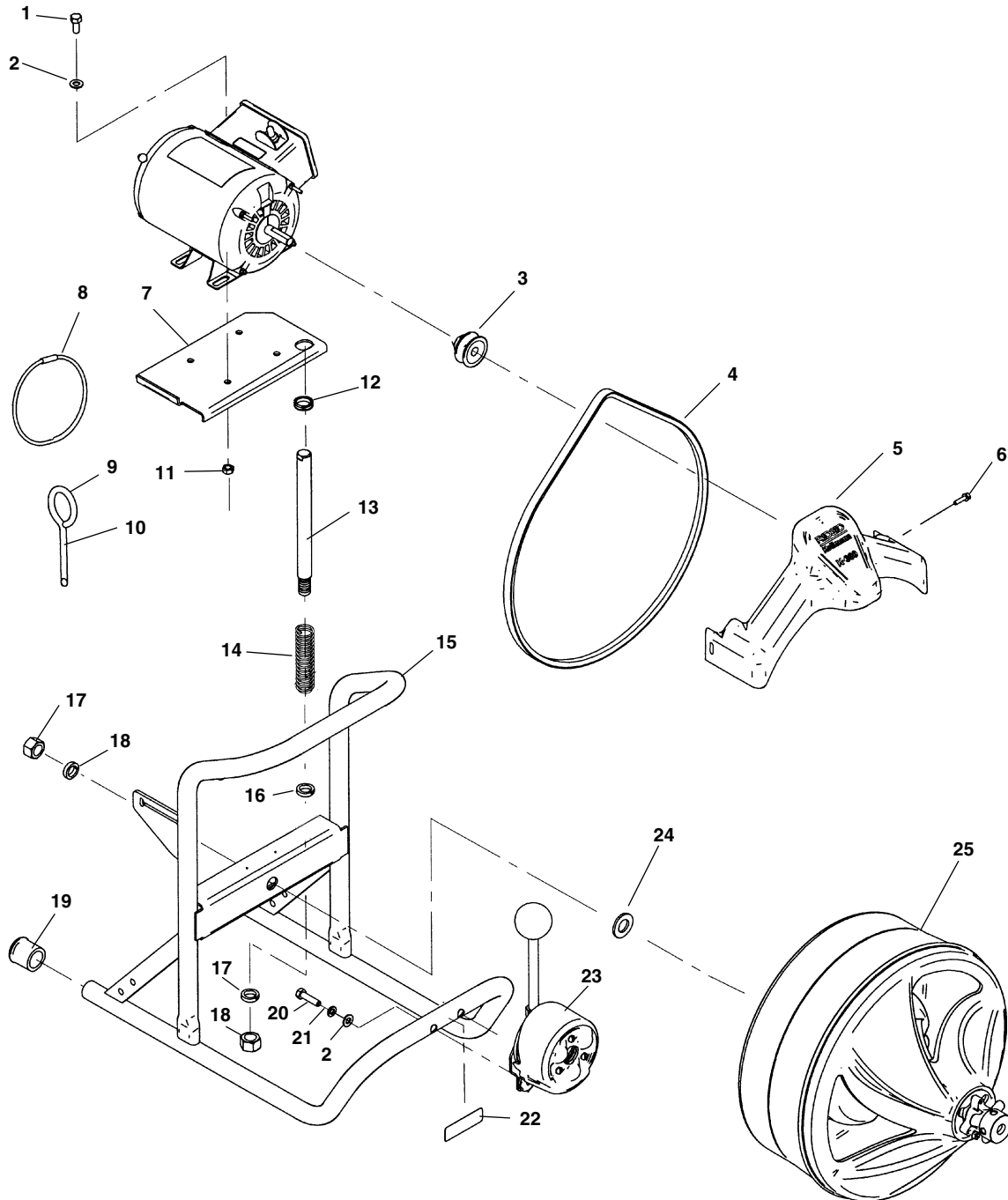


Main Components

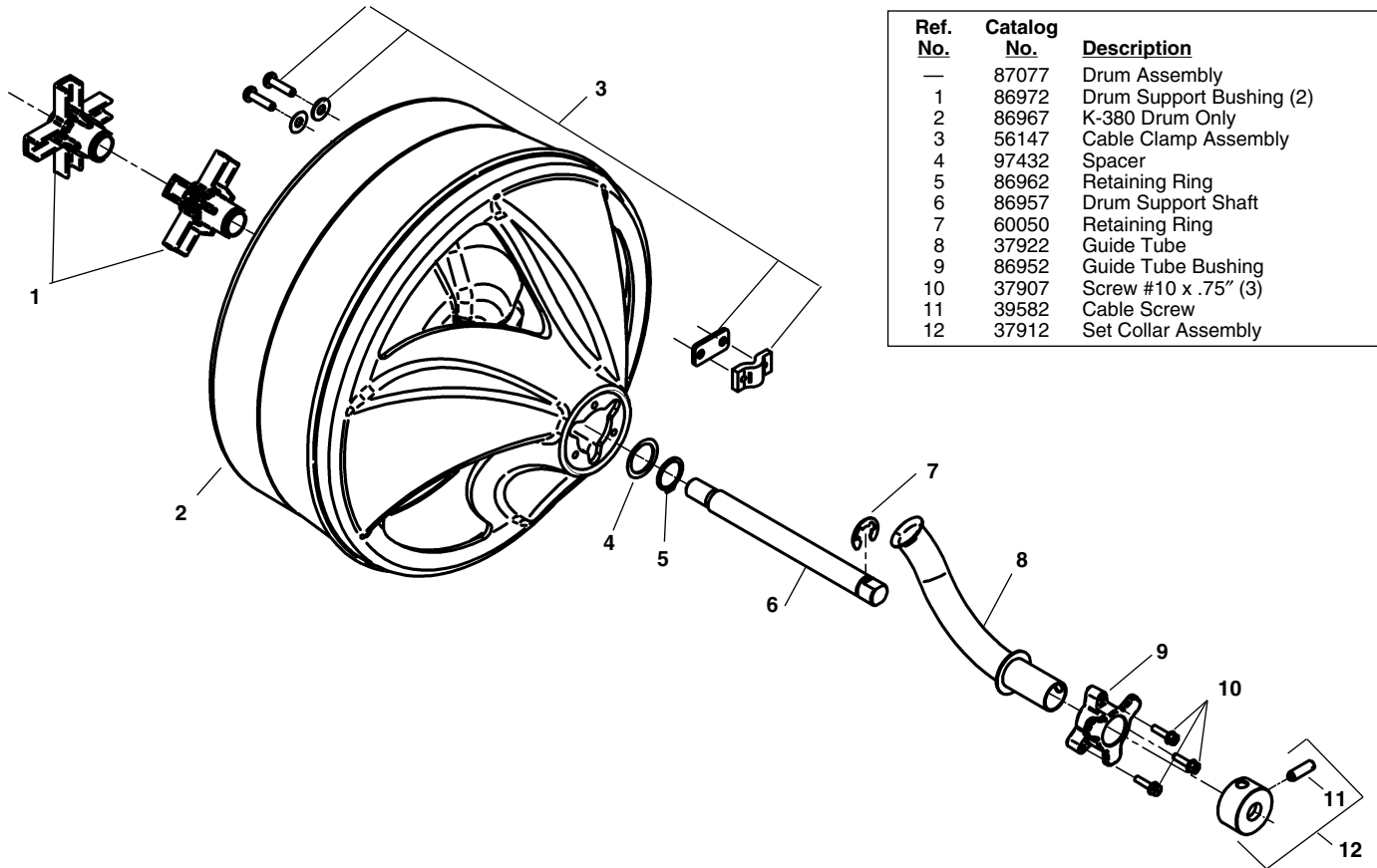


**NOTE: Order parts by Catalog Number Only.
DO NOT order by Reference Number.**

Ref. No.	Catalog No.	Description	Ref. No.	Catalog No.	Description
1	61130	Hex Screw $\frac{5}{16}$ " - 18 x $\frac{3}{4}$ " (4)	14	87002	Compression Spring
2	60060	Flat Washer $\frac{5}{16}$ " (6)	15	87007	K-380 Frame
3	86987	Pulley w/Set Screw	16	21963	Spacer (Europe & U.K. Only)
4	86977	Belt	17	13617	$\frac{5}{8}$ " - 11 Nut
5	86982	Belt Guard	18	46682	$\frac{5}{8}$ " Lockwasher
6	37907	#10 Screw (5)	19	37962	Rubber Tip (2)
7	86992	Motor Base Plate	20	60515	Hex Screw .31" - 18 x 1.25" (2)
8	54562	Tool Holder	21	60080	$\frac{1}{2}$ " Lockwasher (2)
9	59230	$\frac{3}{8}$ " Pin Key	22	87012	K-380 Label
10	59225	$\frac{1}{2}$ " Pin Key	23	87337	K-380 Power Feed Assembly
11	27517	Lock Nut (4)	24	41790	Flat Washer
12	37952	Split Grommet	25	87077	K-380 Drum Assembly
13	86997	Spring Support Shaft			

Drum Assembly

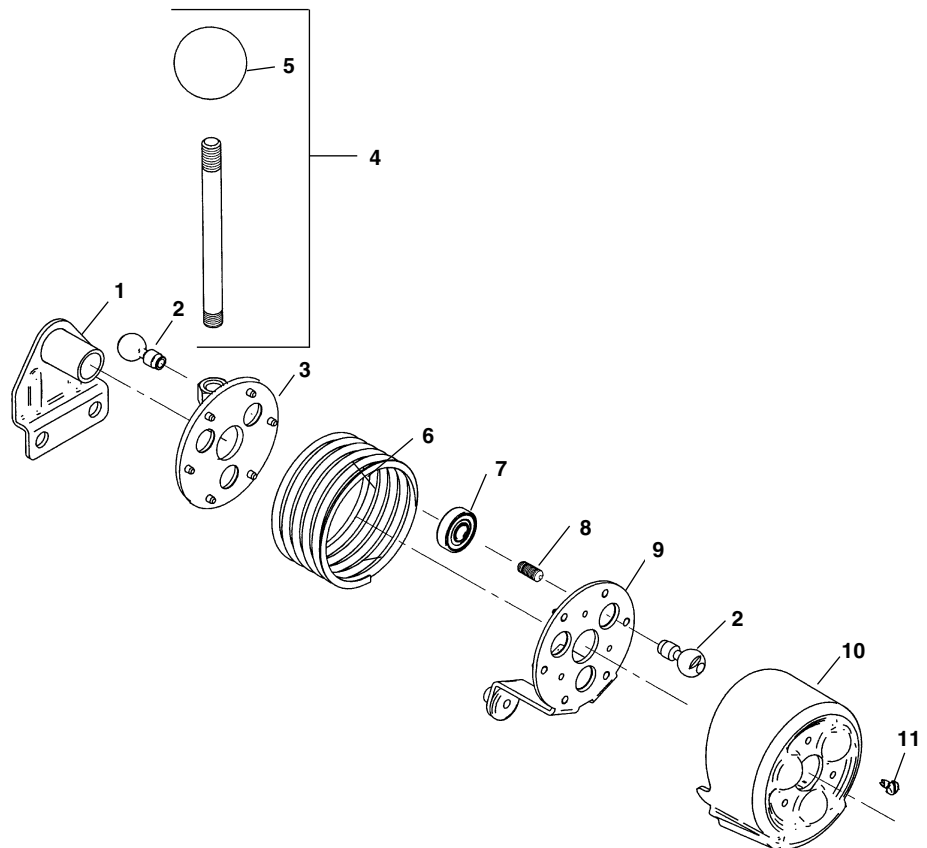
**NOTE: Order parts by Catalog Number Only.
DO NOT order by Reference Number.**



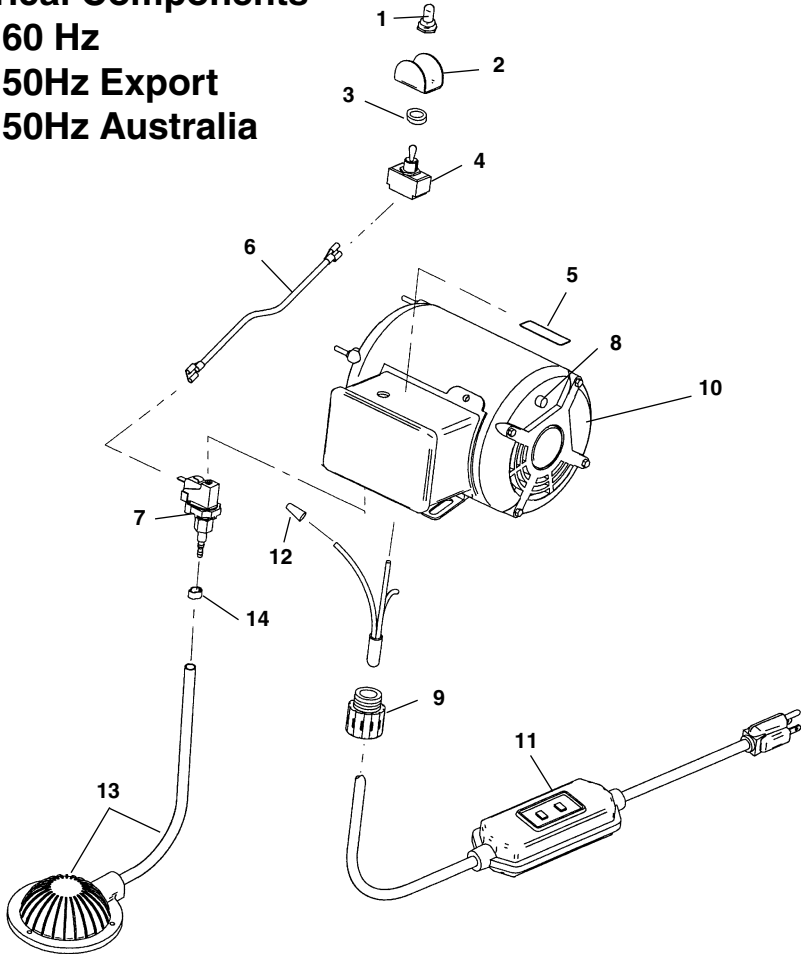
Ref. No.	Catalog No.	Description
—	87077	Drum Assembly
1	86972	Drum Support Bushing (2)
2	86967	K-380 Drum Only
3	56147	Cable Clamp Assembly
4	97432	Spacer
5	86962	Retaining Ring
6	86957	Drum Support Shaft
7	60050	Retaining Ring
8	37922	Guide Tube
9	86952	Guide Tube Bushing
10	37907	Screw #10 x .75" (3)
11	39582	Cable Screw
12	37912	Set Collar Assembly

Autofeed Assembly

Ref. No.	Catalog No.	Description
—	87337	Autofeed Assembly
1	87627	Mounting Bracket
2	87607	Roller Shaft (6)
3	87622	Back Plate
4	93630	Clutch Handle
5	59585	Ball for Handle
6	87617	Spring
7	44077	Ball Bearing (3)
8	41502	Set Screw 5/16" - 18 x 3/4" (3)
9	87612	Front Plate
10	87632	Autofeed Cover
11	45420	Screw 10 - 24 x 3/8" (3)



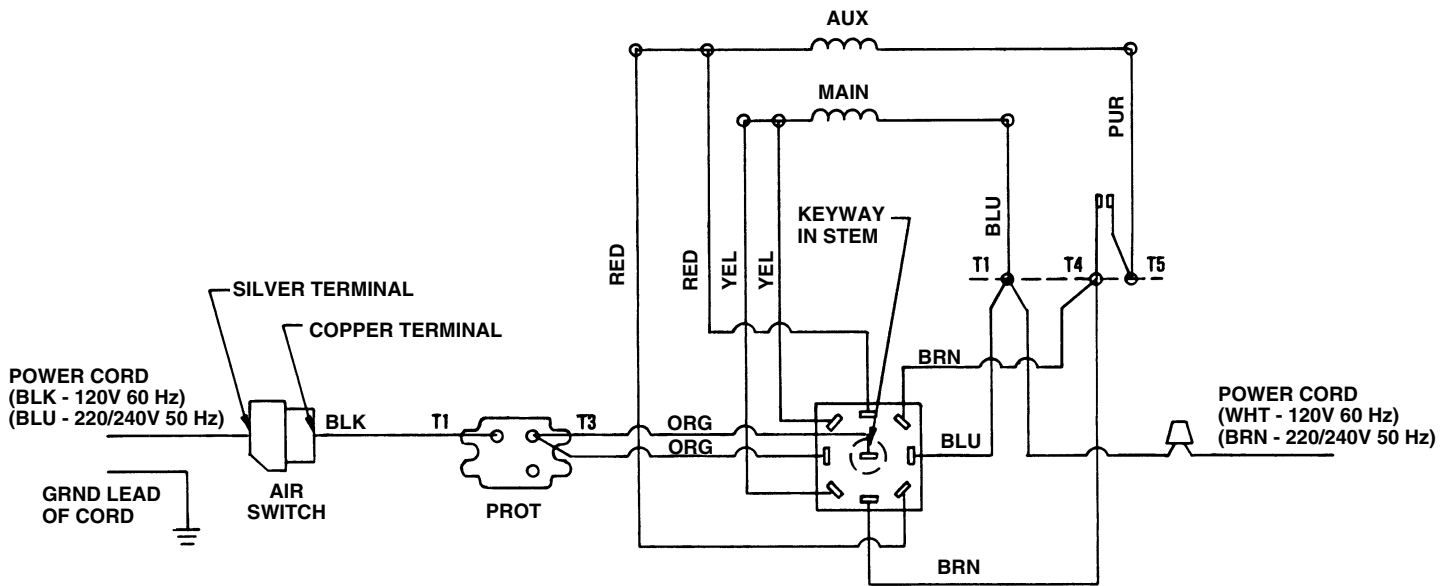
Electrical Components
 120V 60 Hz
 220V 50Hz Export
 240V 50Hz Australia



**NOTE: Order parts by Catalog Number Only.
 DO NOT order by Reference Number.**

Ref. No.	Catalog No.	Description
1	23507	Rubber Boot
2	61490	Switch Guard
3	23512	Rubber Washer
4	41817	Switch
5	23687	FOR/REV Label
6	44877	Lead Wire Assembly
7	32992	Air Switch
8	67412	Thermal Overload
9	96265	Strain Relief
10	37977	120V 60Hz Motor Assembly (Includes Ref. No. 1 - 9)
	45292	220V 50Hz Motor Assy. - Export (Includes Ref. No. 1 - 9)
	44702	240V 50Hz Motor Assy. - Australia (Includes Ref. No. 1 - 9)
11	50507	120V Power Cord w/GFCI
	15707	220V Power Cord - Export
	35692	240V Power Cord - Australia
12	44635	Wire Nut
13	37967	Foot Switch Assembly
14	35142	Hose Clamp

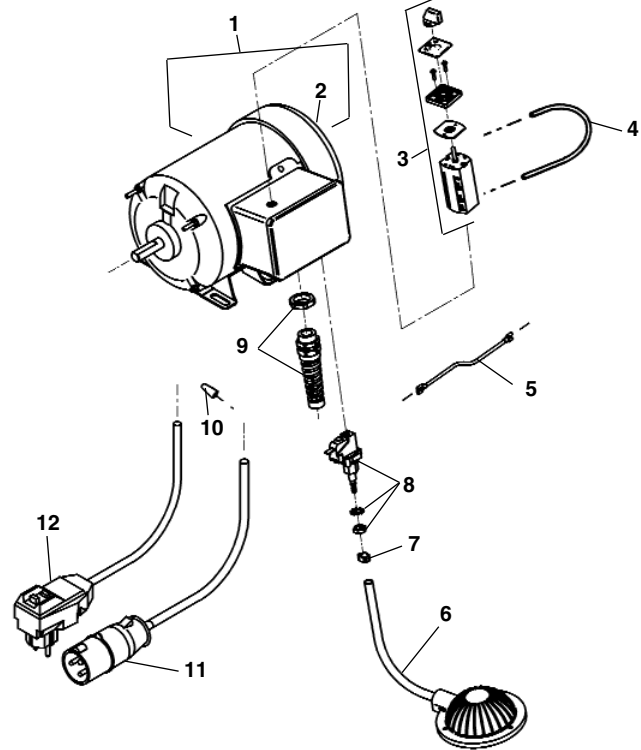
Wiring Diagram



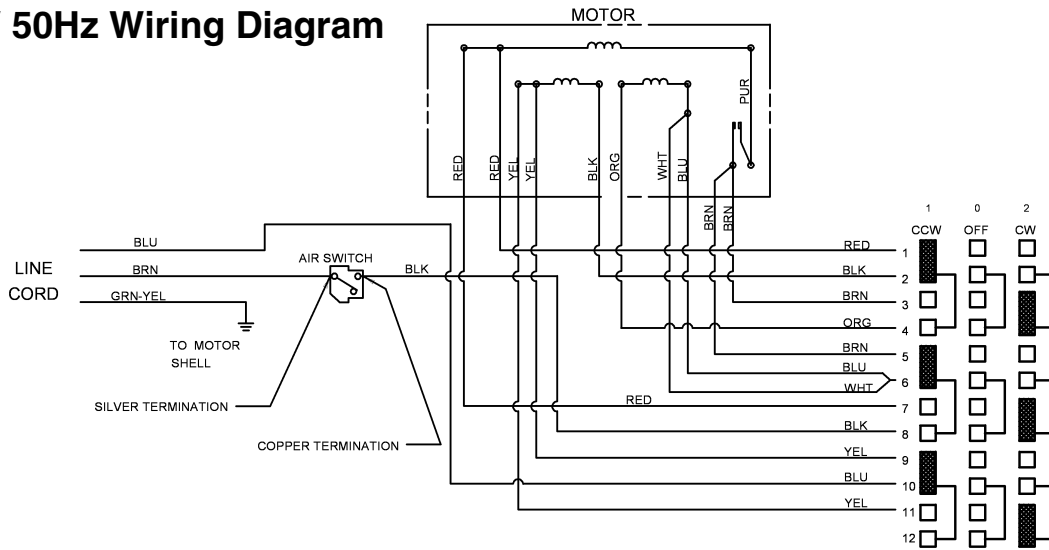
Electrical Components Europe & U.K.

**NOTE: Order parts by Catalog Number Only.
DO NOT order by Reference Number.**

Ref. No.	Catalog No.	Description
1	44712	110/220/240V 50Hz Motor Assy.
2	67417	Thermal Overload
3	20143	Switch
4	44882	Jumper Wire Assembly
5	44877	Lead Wire Assembly
6	37967	Foot Switch Assembly
7	35142	Hose Clamp
8	32992	Air Switch
9	27187	Strain Relief
10	44635	Wire Nut
11	65842	220V Power Cord (Europe)
12	45022	110V Power Cord (U.K.)



220/240V 50Hz Wiring Diagram



110V 50Hz Wiring Diagram

