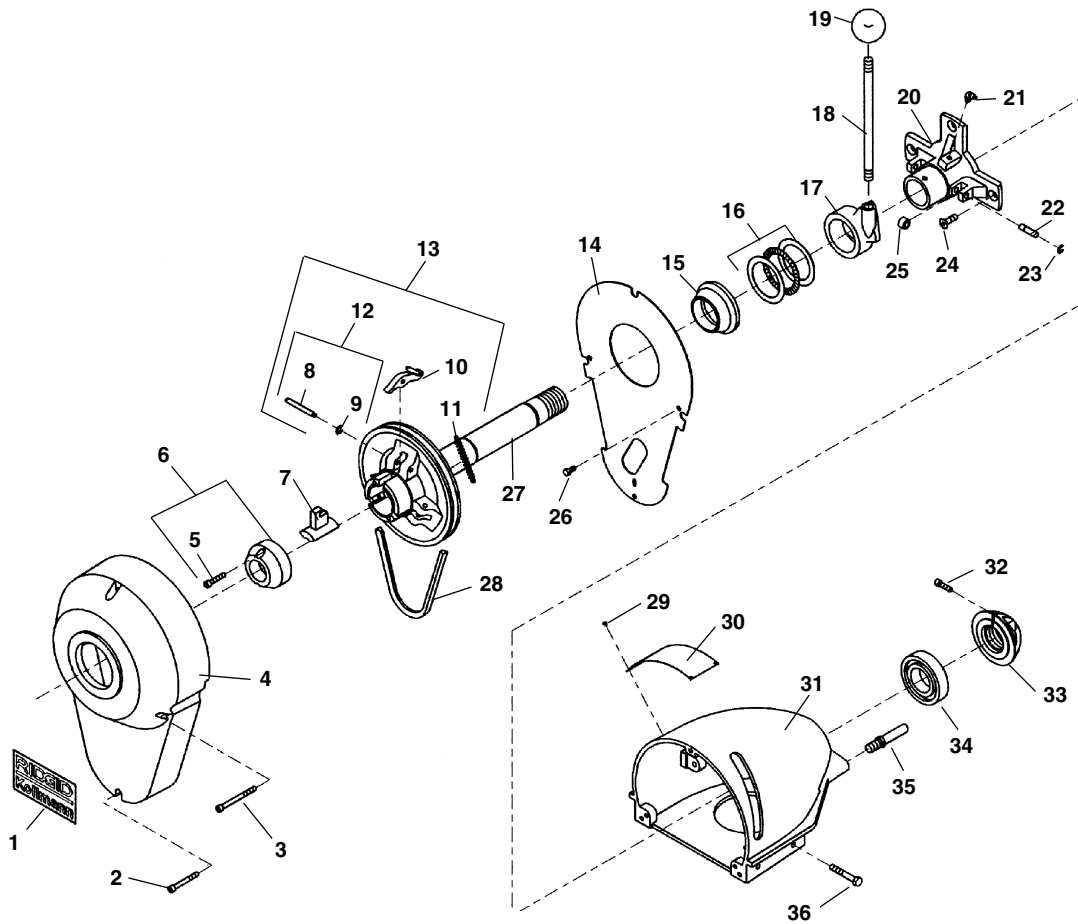


**K-75A
K-75B
K-1500A
K-1500B
K-1500ASP
K-1500BSP**

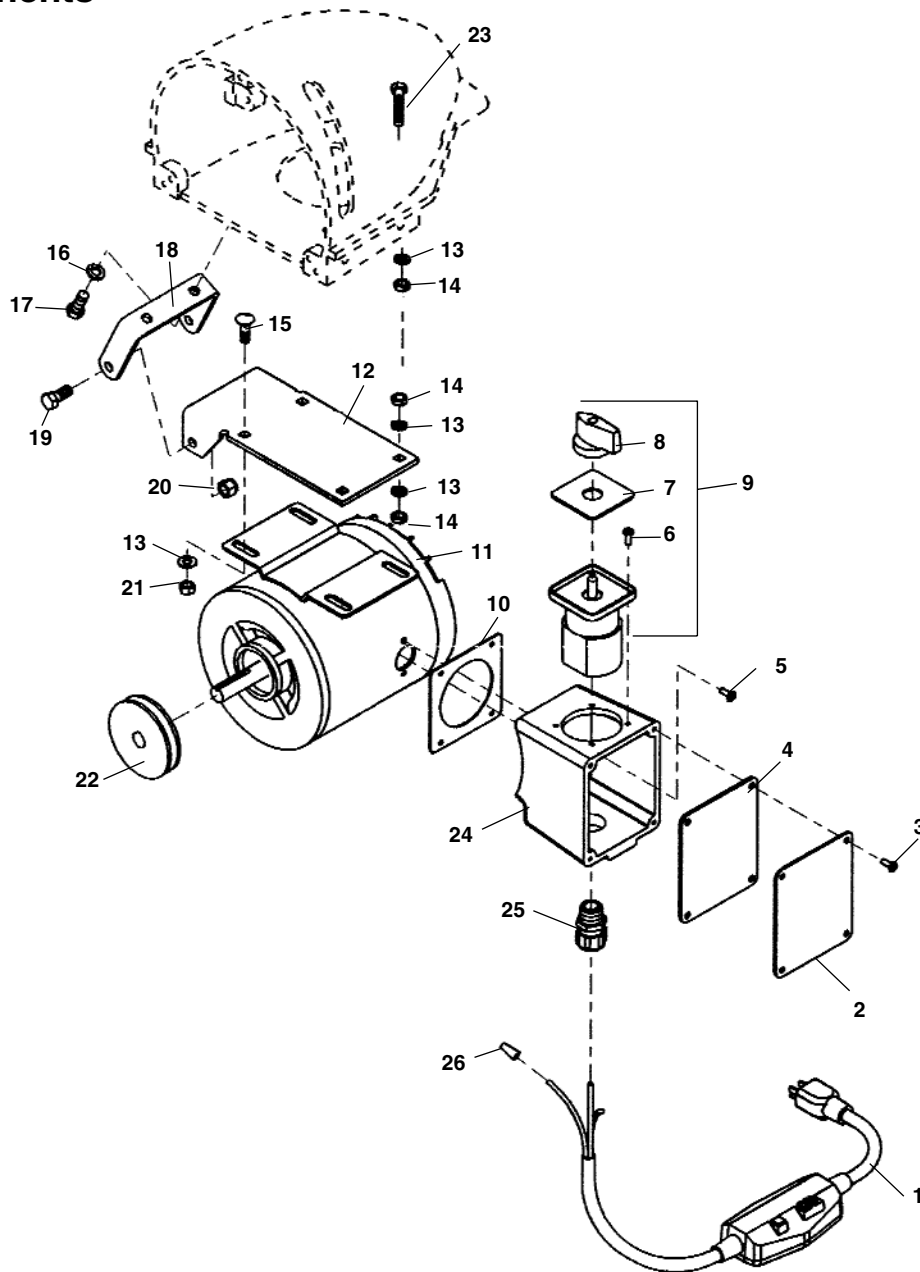
Main Components



**NOTE: Order parts by Catalog Number Only.
DO NOT order by Reference Number.**

Ref. No.	Catalog No.	Description	Ref. No.	Catalog No.	Description
1	23657	Label (K-75A)	18	59575	Clutch Handle
	24102	Label (K-75B)	19	59585	Clutch Knob
	23662	Label (K-1500A)	20	23552	Main Bearing
	24097	Label (K-1500B)	20	45247	Main Bearing (SP Models Only)
	45232	Label (SP Models Only)	21	89815	Grease Fittings
2	44510	Screw	22	23592	Pin (2)
3	23652	Screw (3)	23	34175	Retaining Ring (2)
4	23547	Front Guard	24	68875	Screw (3)
5	84425	Screw (2)	25	61015	Roller (2)
6	59500	Nose Piece (Incl. Ref. #29)	26	60265	Screw (2)
7	59330	Jaw Assembly (K-75) 5/8" Cable	27	23562	Pulley & Shaft Assembly
	59325	Jaw Assembly (K-75/K-1500) 7/8" Cable	28	23577	V-Belt
	59320	Jaw Assembly (K-1500) 1 1/4" Cable	29	76730	Screw (6)
8	90105	Pin (3)	30	23632	Warning Label
9	78780	Retaining Ring		45282	Warning Label (SP Models Only)
10	59530	Rocker Arm Set	31	23542	Body
11	60155	Spring (3)	32	60910	Screw
12	60150	Rocker Arm Pin	33	60935	Lock & Adj. Nut (Incl. #2)
13	60145	Rocker Arm Kit	34	60930	Ball Bearing
14	23567	Inside Guard	35	59580	Guide Hose Pin (2)
15	23572	Clutch Cone	36	87405	Screw (4)
16	23677	Thrust Bearing Assembly		43757	Screw (4) (SP Models Only)
17	23557	Clutch Casting			

Motor Components

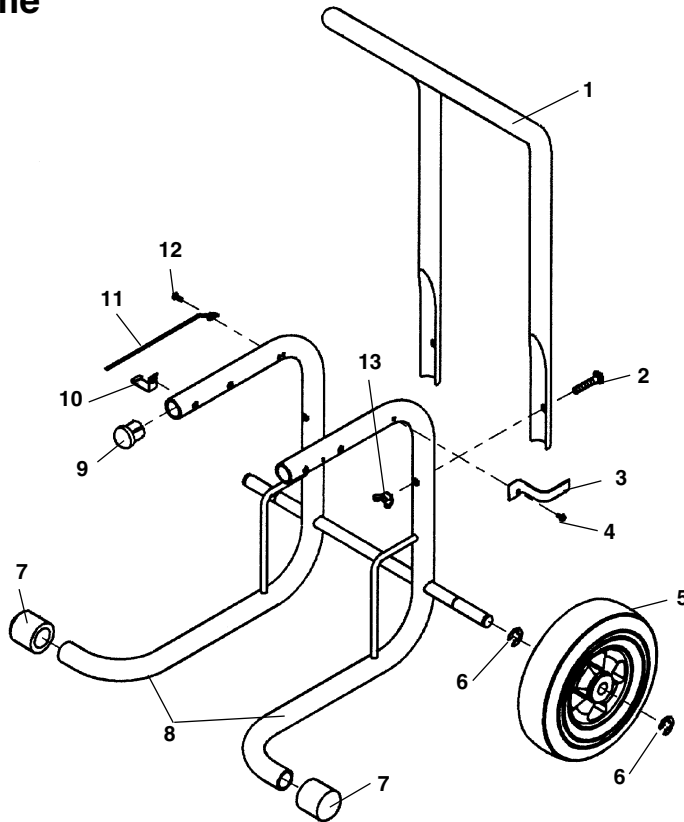


**NOTE: Order parts by Catalog Number Only.
DO NOT order by Reference Number.**

Ref. No.	Catalog No.	Description	Ref. No.	Catalog No.	Description
1	50502	Line Cord w/GFCI	13	60080	Lock Washer $\frac{5}{16}$ " (6)
	45022	Line Cord 110V - U.K.	14	61115	Jam Nut $\frac{5}{16}$ " - 18 (3)
	39562	Line Cord - Europe	15	96260	Carriage Bolt $\frac{5}{16}$ " - 18 x $\frac{3}{4}$ " (3)
	15707	Line Cord - Export	16	60085	A-2290 Lock Washer (2)
2	45272	Cover Plate	17	60380	A-2481 Screw (2)
3	59990	Screw #10	18	23642	Motor Bracket
4	45267	Cover Plate Gasket	19	59785	A-210 Screw (2)
5	43932	A-2256 Screw (2)	20	43947	Lock Nut $\frac{3}{8}$ " - 16 (2)
6	59727	Switch Mounting Screw (4)	21	60230	Hex Nut $\frac{5}{16}$ " - 18 (3)
7	59712	Switch Plate	22	45227	Pulley
8	59702	Switch Knob	23	43757	Hex Screw $\frac{5}{16}$ " - 18 x 2"
9	59757	Switch Assembly (Includes Ref. No. 6-8)	24	45262	Switch Box
10	45257	Switch Box Gasket	25	50512	Strain Relief
11	45237	Motor 1 Hp	26	44635	Wire Nut
12	54582	Motor Table			

**K-75A
K-75B
K-1500A
K-1500B
K-1500ASP
K-1500BSP**

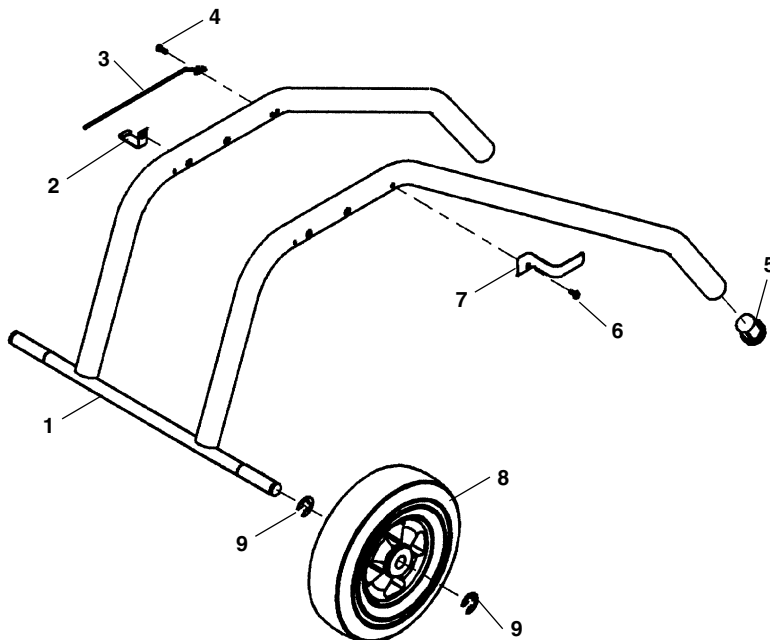
A Frame



**NOTE: Order parts by Catalog Number Only.
DO NOT order by Reference Number.**

Ref. No.	Catalog No.	Description
1	23537	Handle (Type "A")
2	23617	Bolt (2)
3	61965	Cord Hook w/Screw (2)
4	61500	A-427 Screw (2)
5	23602	Wheel (K-75, K-1500) (2)
6	23597	Wheel (SP Models Only) (2)
7	60050	A-2281 Retaining Ring (4)
8	23607	Leg End Cap (2)
9	23532	Frame Assembly
10	61470	A-394 Rubber Plug (2)
11	23647	Tool Clip Bracket
12	23622	Tool Clip
13	59990	A-2256 Screw
	45217	A-7875 Screw (SP Models Only)
	45385	E-3328 Wing Nut (2)

B Frame



Ref. No.	Catalog No.	Description
1	23672	Frame Assembly
2	23647	Tool Clip Bracket
3	23622	Tool Clip
4	59990	A-2256 Screw
5	45217	A-7875 Screw (SP Models Only)
6	61470	A-394 Rubber Plug (2)
7	61500	A-427 Screw (2)
8	61965	Cord Hook w/Screw (2)
9	23602	Wheel (K-75, K-1500) (2)
	23597	Wheel (SP Models Only) (2)
	60050	A-2281 Retaining Ring (4)