



# Operating Instructions and Parts Manual 8-inch Bench Grinder

Model JWBG-8



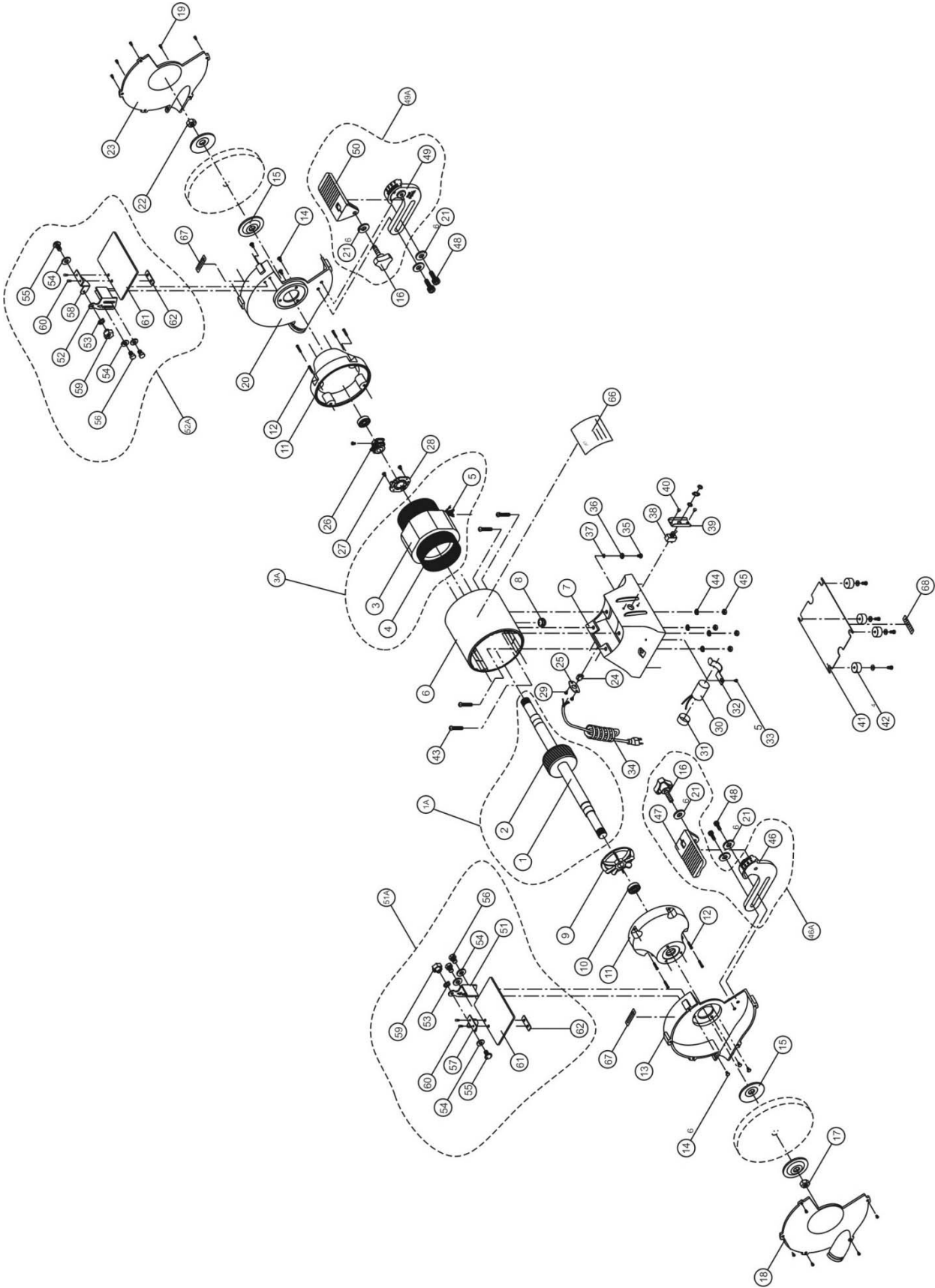
Model 726100 shown

For models with serial no. 15100001 and higher.

**JET**  
427 New Sanford Road  
LaVergne, Tennessee 37086  
Ph.: 800-274-6848  
[www.jettools.com](http://www.jettools.com)

**Part No. M-726100**  
Revision C 07/2015  
ECR TW0137  
Copyright © 2015 JET

13.1.1 JWBG-8 Bench Grinder – Exploded View



### 13.1.2 JWBG-8 Bench Grinder – Parts List

Index No	Part No	Description	Size	Qty
1A	JWBG8-01A	Rotor Assembly		1
1	JWBG8-01	Arbor (RE: JWBG8-01A)		1
2	JWBG8-02	Rotor (RE: JWBG8-01A)		1
3A	JWBG8-03A	Stator Assembly		1
3	JWBG8-03	Stator (RE: JWBG8-03A)		1
4	JWBG8-04	Coil (RE: JWBG8-03A)		1
5	JWBG8-05	Export Wire (RE: JWBG8-03A)		1
6	JBG8A-05W	Motor Housing		1
7	JBG8A-06W	Base		1
8	JWBG8-08	Bushing	16 x 1mm	1
9	JBG8A-10	Fan		1
10	BB-6204ZZ	Ball Bearing	6204ZZ	2
11	JBG8A-12W	Cover		2
12	JBG6A-15	Screw	3/16 x 5/8	8
13	JBG8A-16B	Inner Wheel Guard – left (serial # 15100001 and higher)		1
14	JBG8A-19	Cross Head Screw	1/4 x 1/2	6
15	JWBG8-15	Wheel Flange	5/8 I.D	4
16	JWBG8-16	Triangle Knob	5/16 x 1-1/4	2
17	JBG8A-22	Nut - left hand thread	5/8	1
18	JBG8A-24P	Outer Wheel Guard – left		1
19	JBG8A-19	Cross Head Screw	1/4 x 1/2	10
20	JBG8A-17B	Inner Wheel Guard – right (serial # 15100001 and higher)		1
21	TS-0680031	Flat Washer	5/16	6
22	JBG8A-23	Nut – right hand thread	5/8	1
23	JBG8A-25P	Outer Wheel Guard – right		1
24	JBG8A-31	Rubber Guide		1
25	JBG8A-32	Cord Plate		1
26	JWBG8-26	Centrifugal Start Switch		1
27	JWBG8-27	Cross Head Screw	3/16 x 3/8	2
28	JWBG8-28	Switch Seat		1
29	JBG6A-34	Cross Screw	3/16 x 1/4	2
30	JBG8A-35	Capacitor	125 VAC, 200MFD	1
31	JWBG8-31	Capacitor Cover		1
32	JBG8A-36	Bracket		1
33	JBG6A-34	Screw	3/16 x 1/4	1
34	JBG8A-39	Power Cord		1
35	JBG6A-34	Cross Head Screw	3/16 x 1/4	1
36	JWBG8-36	Copper Washer	M5	1
37	JMS10SCMS-36	External Tooth Lock Washer	M5	1
38	JBG8A-44	Switch		1
39	JBG8A-45	Switch Plate		1
40	JBG6A-34	Screw	3/16 x 1/4	2
41	JBG8A-47	Base Plate		1
42	JWBG8-42	Rubber Foot w/Screw		4
43	JWBG8-43	Screw	1/4 x 7/8	4
44	TS-0720071	Lock Washer	1/4	4
45	TS-0570011	Hex Nut	1/4	4
46A	JWBG8-46A	Tool Rest Assembly – left		1
46	JWBG8-46	Tool Rest Bracket – left		1
47	JWBG8-47	Tool Rest – left		1
48	TS-0208041	Socket Head Cap Screw	5/16 x 3/4	4
49A	JWBG8-49A	Tool Rest Assembly – right		1
49	JWBG8-49	Tool Rest Bracket – right		1
50	JWBG8-50	Tool Rest – right		1
51A	JWBG8-51A	Eye Shield Assembly – left		1
51	JBG8A-50	Eye Shield Fixture (Spark Guard) – left		1
52A	JWBG8-52A	Eye Shield Assembly - right		1
52	JBG8A-51	Eye Shield Fixture (Spark Guard) – right		1
53	TS-0720071	Lock Washer	1/4	2
54	TS-0680021	Flat Washer	1/4	6

Index No	Part No	Description	Size	Qty
55	JBG8A-54	Cross Head Screw	1/4 x 1/2	2
56	6295480	Hex Head Screw	1/4 x 3/8	4
57	JBG8A-55	Eye Shield Bracket – left		1
58	JBG8A-56	Eye Shield Bracket – right		1
59	JBG6A-57	Lock Knob	1/4	2
60	JBG6A-58	Cross Head Screw	3/16 x 3/8	4
61	JBG8A-59	Eye Shield		2
62	JBG6A-60	Eye Shield Fixed Plate		2
66	JWBG8-66	I.D. Label		1
67	JBG6A-63	Direction Label		1
68		Serial Number Label		1
		Grinding Wheels (local purchase)*		2

Note: Some parts may be shown for reference only, not available individually but as part of an assembly.

*\* The grinding wheels provided with the 726100 may be purchased from Norton Industrial or a local dealer. Refer to the following codes when ordering:*

*UPC # 07660788282 Aluminum Oxide General Purpose (White), 8", 100 Grit*

*UPC # 07660705422 Norton 3X High Performance (Blue), 8", 80 Grit*



427 New Sanford Road  
LaVergne, Tennessee 37086  
Phone: 800-274-6848  
[www.jettools.com](http://www.jettools.com)