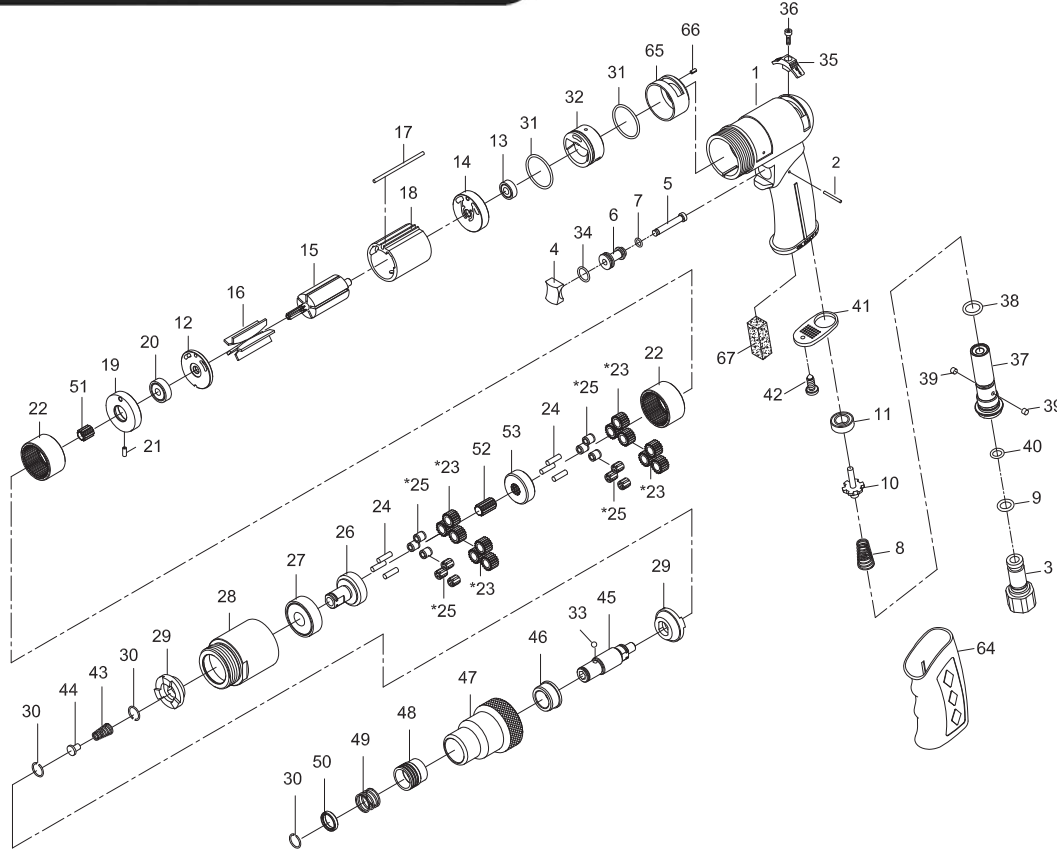




# JSM-8672

## 1/4" Air Screwdriver- Positive Clutch

Stock No. JSM-8672



Parts List on reverse side.

### Specifications

Chuck type.....	Positive
Chuck size (in.).....	1/4
Horsepower.....	1/2
Free speed (RPM).....	800
Working torque (ft./lbs).....	145
Air consumption at load (CFM).....	4
Air Inlet (in.).....	1/4 NPT
Air hose inside diameter (in.).....	3/8
Vibration Value (m/s <sup>2</sup> ).....	0.3
Noise Level (dB).....	83
Overall Length (in.).....	7-3/16
Net weight (lbs.).....	3-1/2

**JET**  
 427 New Sanford Road  
 LaVergne, Tennessee 37086  
 Ph.: 800-274-6848  
 www.jettools.com

**Part No. M-JSM-8672**  
 Revision B1 06/2014

Copyright © 2014 JET, a Division of JPW Industries, Inc.

