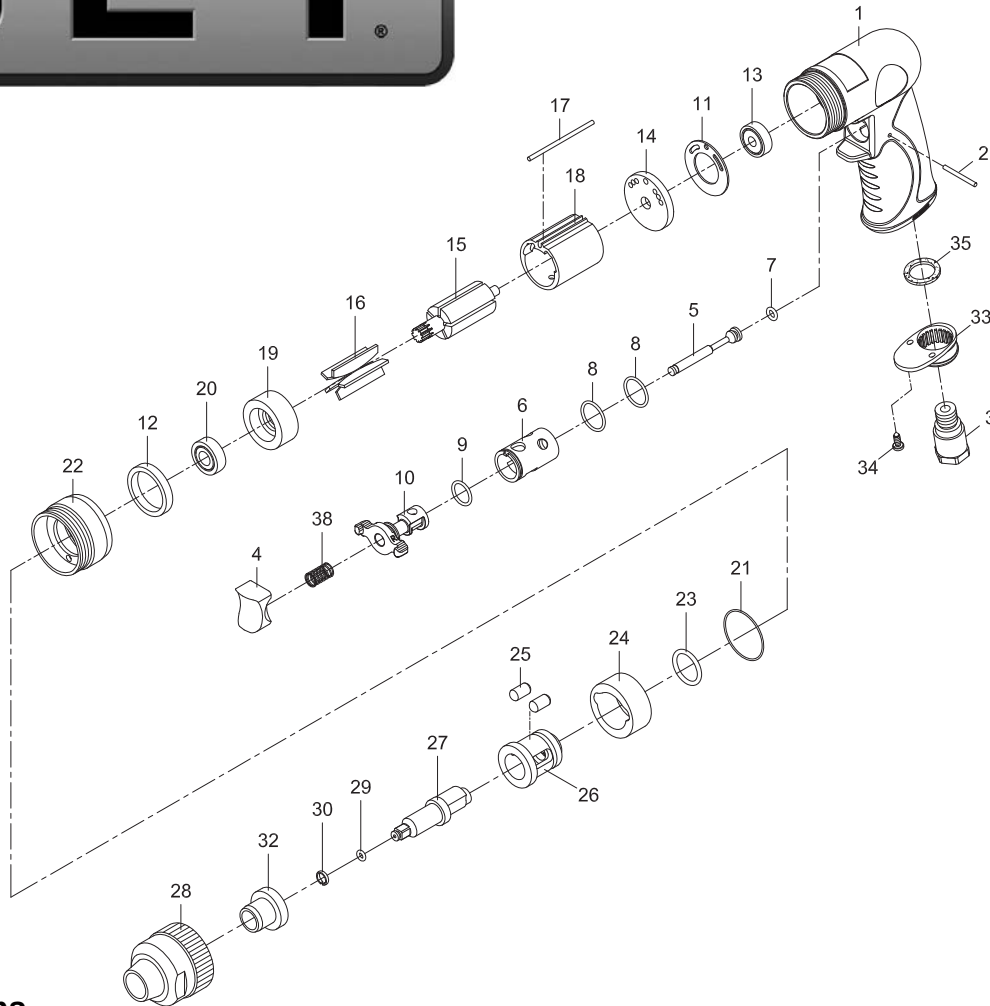




JSM-4072

1/4" Impact Wrench

Stock No. JSM-4072



Specifications

| | |
|-------------------------------------|-------------------------------|
| Square drive (in.) | 1/4 |
| Bolt capacity (in.) | 3/8 |
| Anvil retainer type | Ring |
| Impact mechanism | Maurer clutch |
| Maximum torque (ft./lbs.) | 70 ft/lbs |
| Working torque (ft./lbs.) | 25-70 |
| Torque settings | forward 1 step/reverse 1 step |
| Free speed (RPM) | 11,000 |
| Air pressure (PSI) | 90 |
| Air consumption at load (CFM) | 4.5 |
| Air Inlet (in.) | 1/4 NPT |
| Air Hose inside diameter (in.) | 3/8 |
| Vibration Value (m/s ²) | 3.9 |
| Noise Level (dB) | 83 |
| Number of vanes in motor | 6 |
| Overall Length (in.) | 6 |
| Net weight (lbs.) | 2.20 |

JET

427 New Sanford Road
 LaVergne, Tennessee 37086
 Ph.: 800-274-6848
 www.jettools.com

Part No. M-JSM-4072
 Revision A1 06/2014

Copyright © 2014 JET, a Division of JPW Industries, Inc.

Parts List for JSM-4072 Impact Wrench

| Index Part No | Description | Qty |
|---------------|--------------------------------|-----|
| 1 | JSM7072-01 Motor Housing | 1 |
| 2 | JSM7072-02 Pin (2.5x26.8) | 1 |
| 3 | JSM7072-03 Air Inlet | 1 |
| 4 | JSM7072-04 Trigger | 1 |
| 5 | JSM7072-05 Valve Stem | 1 |
| 6 | JSM7072-06 Valve Bushing | 1 |
| 7 | 70107 O-Ring (4.8x1.9) | 1 |
| 8 | JSM7072-08 O-Ring (15.5x1.5) | 2 |
| 9 | JSM7072-09 O-Ring (12x1.5) | 1 |
| 10 | JSM7072-10 Reverse Lever | 1 |
| 11 | 80211 Motor Gasket | 1 |
| 12 | JSM7072-12 Washer | 1 |
| 13 | BB-626ZZ Ball Bearing (626ZZ) | 1 |
| 14 | JSM7072-14 Rear End Plate | 1 |
| 15 | JSM7072-15 Rotor | 1 |
| 16 | JSM7572-16 Rotor Blades | 5 |
| 17 | JSM7072-17 Pin (2.5x57) | 1 |
| 18 | JSM7572-18 Cylinder | 1 |
| 19 | JSM7072-19 Front End Plate | 1 |
| 20 | BB-77R6 Ball Bearing (77R6ZZ) | 1 |
| 21 | JSM7072-21 O-Ring (32x1) | 1 |
| 22 | JSM7072-22 Clamp Nut | 1 |
| 23 | JSM7072-23 O-Ring (18.72x2.62) | 1 |
| 24 | JSM7072-24 Hammer | 1 |
| 25 | JSM7072-25 Hammer Pin | 2 |

| Index Part No | Description | Qty |
|---------------|-------------------------------|-----|
| 26 | JSM7072-26 Hammer Cage | 1 |
| 27 | JSM7072-27 Anvil (1/4") | 1 |
| 28 | JSM7072-28 Hammer Case | 1 |
| 29 | JSM7072-29 O-Ring (2x1) | 1 |
| 30 | JSM7072-30 Retaining Ring | 1 |
| 32 | JSM7072-32 Anvil Bushing | 1 |
| 33 | JSM7072-33 Exhaust Diffuser | 1 |
| 34 | JSM7572-42 Screw (TS2.9) | 2 |
| 35 | JSM7072-35 Damping Material | 1 |
| 38 | JSM7072-38 Valve Spring | 1 |
| | RPK-7072 Repair Kit | |
| | (includes #7,8,9,16,21,23,29) | |
| | RBK-7072 Rebuild Kit | |
| | (includes #14,17,18,19,25,27) | |

To order parts, call our service department at 800-274-6848 between 8:00 a.m. and 5:00 p.m. (CST), Monday through Friday. Having the Model Number and Serial Number will allow us to serve you quickly and accurately.