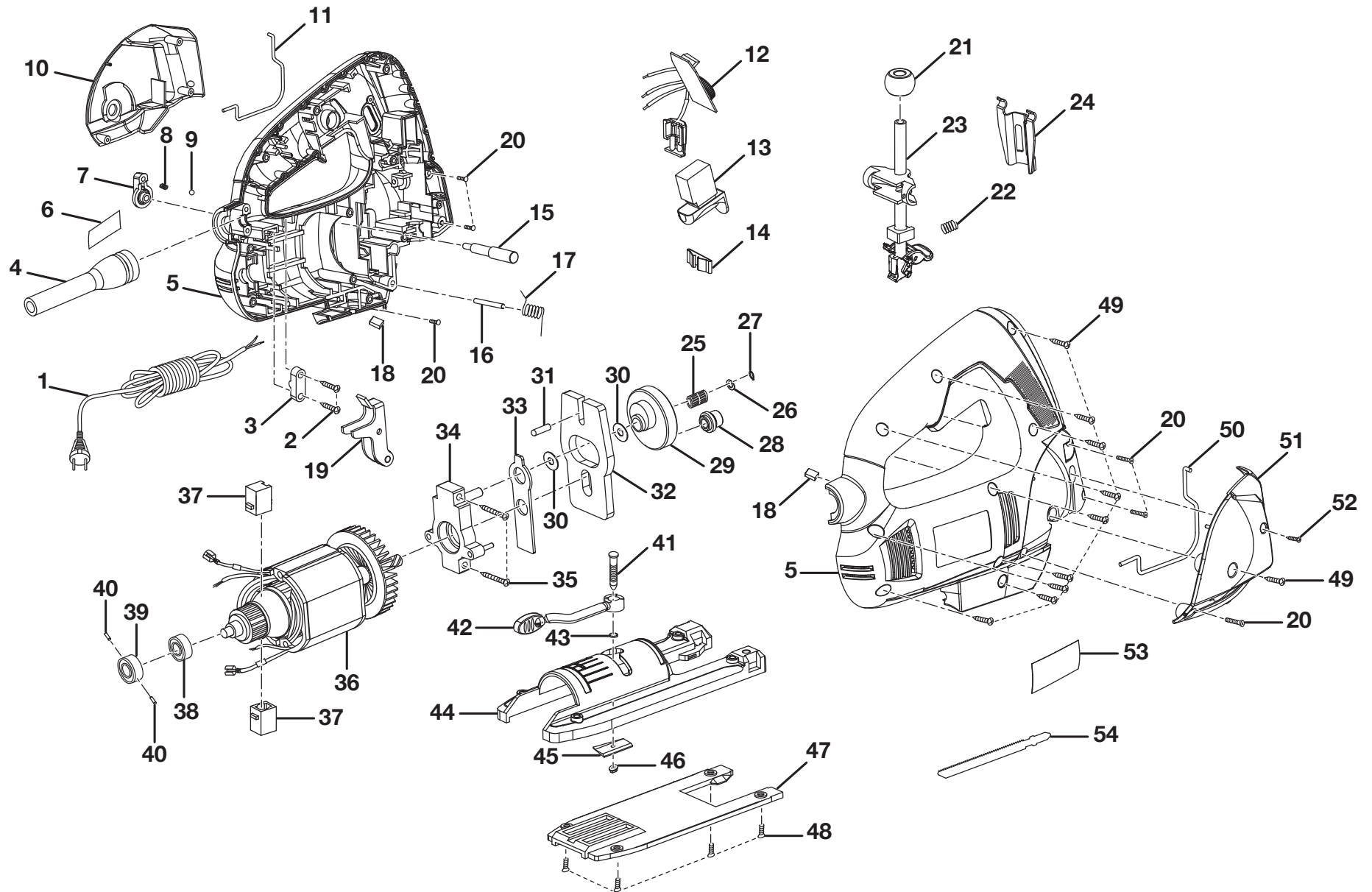


RYOBI ORBITAL JIG SAW – MODEL NUMBER JS480L



RYOBI ORBITAL JIG SAW – MODEL NUMBER JS480L

The model number will be found on a label attached to the motor housing. Always mention the model number in all correspondence regarding your **ORBITAL JIG SAW** or when ordering parts.

PARTS LIST

KEY NO.	PART NUMBER	DESCRIPTION	QTY	KEY NO.	PART NUMBER	DESCRIPTION	QTY
1	039076001001	Power Cord.....	1	32	039064001050	Counterbalance	1
2	039064001004	Screw (M4.2 x 16 mm, Pan Hd.).....	2	33	039064001053	Drive Plate.....	1
3	039076001002	Cord Clamp	1	34	039064001056	Bearing Plate Assembly.....	1
4	039076003103	Bend Relief	1	35	039064001054	Screw (M4.2 x 30 mm).....	2
5	039076003104	Housing Assembly	1	36	039076003102	Motor Assembly (Inc. Key Nos. 38-39).....	1
6	039076001043	Logo Label.....	1	37	039076001066	Brush Assembly.....	2
7	039076003002	Orbital Adjustment Knob	1	38	039076001029	Ball Bearing.....	1
8	039064001012	Spring	1	39	039076001030	Stretch Washer	1
9	039064001013	Steel Ball.....	1	40	039076001031	Rubber Plug.....	2
10	039076003003	Left Cover	1	41	039064001051	Positive Stop Screw.....	1
11	039076001009	Left Wire.....	1	42	039076001023	Base Adjustment Lever Assembly.....	1
12	039076003004	Circuit Board.....	1	43	039076001072	Washer.....	1
13	039076001011	Switch.....	1	44	039076001035	Saw Base.....	1
14	039064001019	Spring Plate	1	45	039064001075	Clamp Pad.....	1
15	039064001021	Orbital Adjustment Rod	1	46	039064001076	Lock Nut (M5)	1
16	039064001022	Pin (OD 4 x 24 mm).....	1	47	039076001036	Base Plate.....	1
17	039064001023	Torsion Spring.....	1	48	039064001074	Screw (M4 x 10 mm).....	4
18	039076001017	Retaining Plate.....	2	49	039064001065	Screw (M4.2 x 16 mm, Pan Hd.).....	10
19	039064001024	Blade Guide Assembly	1	50	039076001032	Right Wire	1
20	039076003006	Screw (M2.9 x 10 mm).....	6	51	039076003005	Right Cover.....	1
21	039064001025	Heat Sink w/Bearing.....	1	52	039064001066	Screw (M2.9 x 16 mm).....	1
22	039076001071	Compression Spring.....	1	53	039076003007	Data Label	1
23	039064001030	Saw Bar Assembly.....	1	54	039076001039	Wood Cutting Blade (100 mm).....	1
24	039064001029	Guide Plate	1				
25	039064001040	Needle Bearing	1				
26	039064001041	Washer (OD 6 x ID 12 x 1t)	1				
27	039064001042	Retaining Ring	1				
28	039076001069	Drive Sleeve w/Bearing Assembly.....	1				
29	039064001047	Gear Assembly	1				
30	039076001022	Washer.....	2				
31	039064001049	Pin (OD 6 x 12 mm).....	1				

Not Shown:
 039076003101 Optional Edge Guide Kit
 039076001040 Optional Dust Port Assembly
 039076001038 Optional Anti-Splintering Insert
 988000453 Operator's Manual (039076003008)

6-26-12
(REV:02)