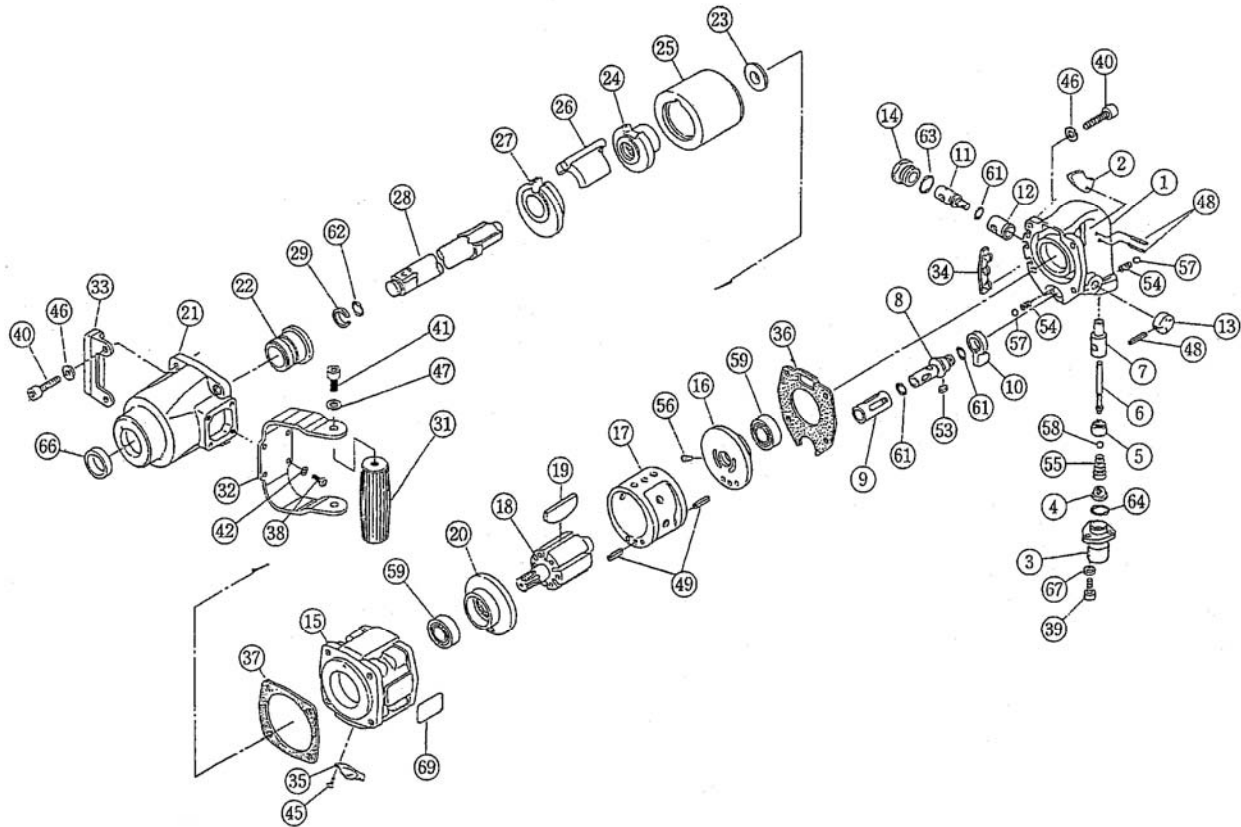




## Parts List for 3/4" Square Drive Impact Wrench Model J-2000D



Parts identified on reverse side.

### Specifications:

Stock no.	Model	Square drive (in)	Bolt capacity (in)	Anvil retainer type	Max. torque (ft/lb)	Free speed (RPM)	Air press. (PSI)	Air consumption (CFM)	Air inlet (NPT/in)	Air hose (ID/in)	Vibration value (m/s <sup>2</sup> )	Overall length (in)	Weight (lb)
505974	J-2000D	3/4	13/16	Ring/hole	510	5500	90	39	3/8	3/8	4	12-3/16	13

### JET

427 New Sanford Rd.  
LaVergne, Tennessee 37086  
Ph.: 800-274-6848  
www.jettools.com

**Part No. M-505974**

Revision B 08/2014

Copyright © 2014 JET, a Division of JPW Industries, Inc.

## Replacement Parts

To order parts or reach our service department, call 1-800-274-6848 Monday through Friday (see our website for business hours, [www.jettools.com](http://www.jettools.com)). Having the Model Number and Serial Number of your product available when you call will allow us to serve you quickly and accurately.

## Parts List for J-2000D Impact Wrench

Index				Index			
No.	Part No.	Description	Qty	No.	Part No.	Description	Qty
1	431781021	Handle	1	35	431749050	Exhaust Deflector	1
2	431267130	Trigger	1	36	136104040	Motor Housing Packing	1
3	431753070	Air Inlet (NPT)	1	37	136104041	Clutch Housing Packing	1
4	136803032	Inlet Screen (1/2)	1	38	131905014	Hex Soc Button Hd Screw, M5x14	4
5	135505002	Throttle Valve	1	39	131705016	Hex Screw, M5x16	3
6	130405013	Throttle Push Rod	1	40	131706025	Hex Screw, M6x25	8
7	431753090	Throttle Valve Bushing	1	41	131908016	Hex Soc Button Hd Screw, M8x16	2
8	431765210	Reverse Valve	1	42	131310005	Spring Washer, 5mm	4
9	431753200	Reverse Valve Bushing	1	45	131803108	Tapping Screw, M3.5x8	2
10	431765230	Reverse Valve Lever	1	46	131309006	Washer, M6	6
11	431753150	Control Valve	1	47	131309008	Washer, M8	2
12	431266140	Control Valve Bushing	1	48	130603024	Spring Pin, 3x24mm	3
13	136704051	Control Valve Knob	1	49	130604014	Spring Pin, 4x14mm	2
14	431266270	Control Valve Cap	1	53	130410381	Key, 3x8mm	1
15	431822010	Motor Housing	1	54	130808001	Spring, 3.6x13	2
16	460822852	Rear Plate	1	55	130808002	Throttle Valve Spring	1
17	460822862	Liner	1	56	469800080	Knock Pin, 2.4mm	1
18	431630390	Rotor	1	57	SB-5/32	Steel Ball, 5/32	2
19	460782881	Vane	6	58	130505028	Poly-ure Ball, 7/16	1
20	460822892	Front Plate	1	59	BB-6003	Ball Bearing, 6003	2
21	431785520	Clutch Housing	1	61	131101012	O-Ring, P-12	3
22	431630530	Shank Bushing	1	62	131101013	O-Ring, P-12.5	1
23	431630480	Washer	1	63	131103016	O-Ring, S-20	1
24	431630430	Cam	1	64	131103018	O-Ring, S-22.4	1
25	431630440	Hammer Cage	1	66	131212024	Oil Seal	1
26	431630450	Dog	1	67	131310005	Spring Washer	3
27	431630470	Cage Cap	1	69	137309040	Name Plate Short Anvil	1
28	43163050B	Anvil CP, Short	1		137309041	Name Plate Long Anvil	1
	43163350B	Anvil CP, Long	1	72	134805040	Hose Stem, 3/8x1/2	1
29	130803113	Socket Retainer Ring	1	97	136503003	Poly Cap, 3/8	1
31	431266620	Grip	1	99	134001003	Hex Wrench, 3mm	1
32	431681550	Dead Handle	1				
33	136201019	Protector (Front)	1				
34	136606005	Protector (Rear)	1				

NOTE: Anvil parts are pre-lubed and sealed with Nigtight-M #2 grease, or equivalent. (For service reference only; no attention required in this area by operator.)