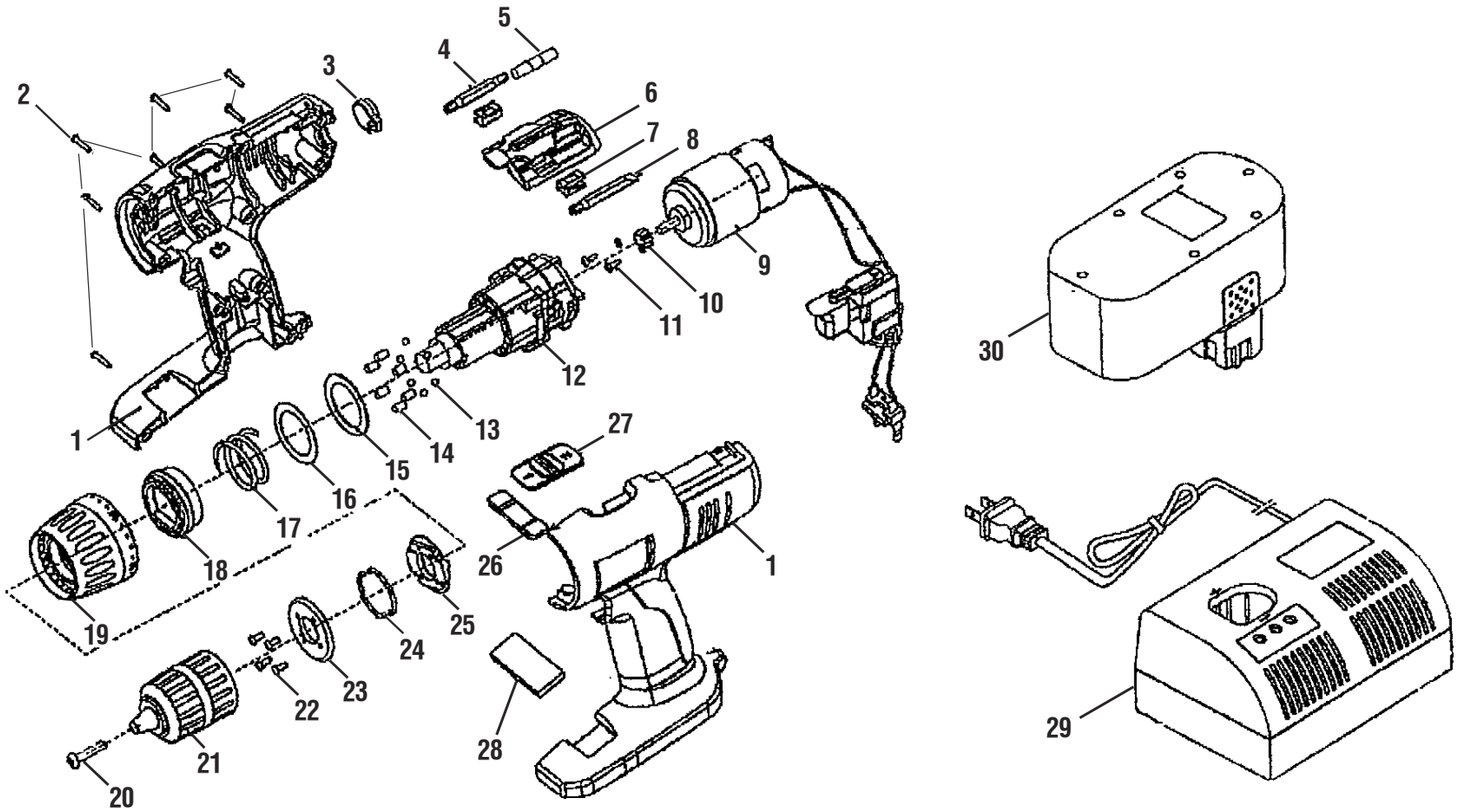


RYOBI 1/2 in., 18 VOLT CORDLESS DRILL DRIVER – MODEL NUMBER HP1802M



RYOBI 1/2 in., 18 VOLT CORDLESS DRILL DRIVER – MODEL NUMBER HP1802M

The model number will be found on a label attached to the motor housing. Always mention the model number in all correspondence regarding your **DRILL DRIVER** or when ordering repair parts.

PARTS LIST

Key No.	Part Number	Description	Qty.	Key No.	Part Number	Description	Qty.
1	984569001	Housing Assembly.....	1	20	6612003	Screw (M5 x 26 mm).....	1
2	6620605	Screw (M3.5 x 16 mm).....	11	21	6806001	Chuck	1
3	304152003	Rear Bubble Level	1	22	6620311	Screw (M3 x 20 mm).....	4
4	6782005	Double Bit.....	1	23	6359801	Mounting Label.....	1
5	3000906	Level Assembly	1	24	6399201	Detent Ring.....	2
6	5475401	Bit Storage.....	1	25	5434601	Spring Holder	1
7	630206007	Bit Clip.....	2	26	5475201	Forward/Reverse Lever	1
8	6782015	Double Bit.....	1	27	5475301	2-Speed Lever	1
9	984570001	Motor Assembly (Inc. Key Nos.10-12).....	1	28	6000303	Magnet	1
10	6703001	Washer.....	2	29	1423701	Charger.....	1
11	6621202	Screw (M4 x 10 mm).....	2	30	1322401	Battery Pack.....	1
12	2200594	Gear Box Assembly.....	1	Not Shown:			
13	6721901	Steel Ball.....	6		9418529	Logo Label.....	1
14	6833802	Pin	6		9418654	Data Label	1
15	6703503	Clutch Washer	1		3051730	Carrying Case.....	1
16	6838001	Clutch Washer	1		972000874	Operator's Manual	
17	6843401	Spring	1		2-20-13		
18	5437201	Sleeve.....	1		(Rev:03)		
19	5474801	Clutch Cap	1				

WARNING: Improper repair of a double insulated tool can result in damage to the double insulation system possibly causing electrical shock or electrocution. Any repairs requiring disassembly of your tool requires safety testing and should only be performed by a Ryobi Authorized Service Center. For the service center nearest you call 1-800-525-2579.