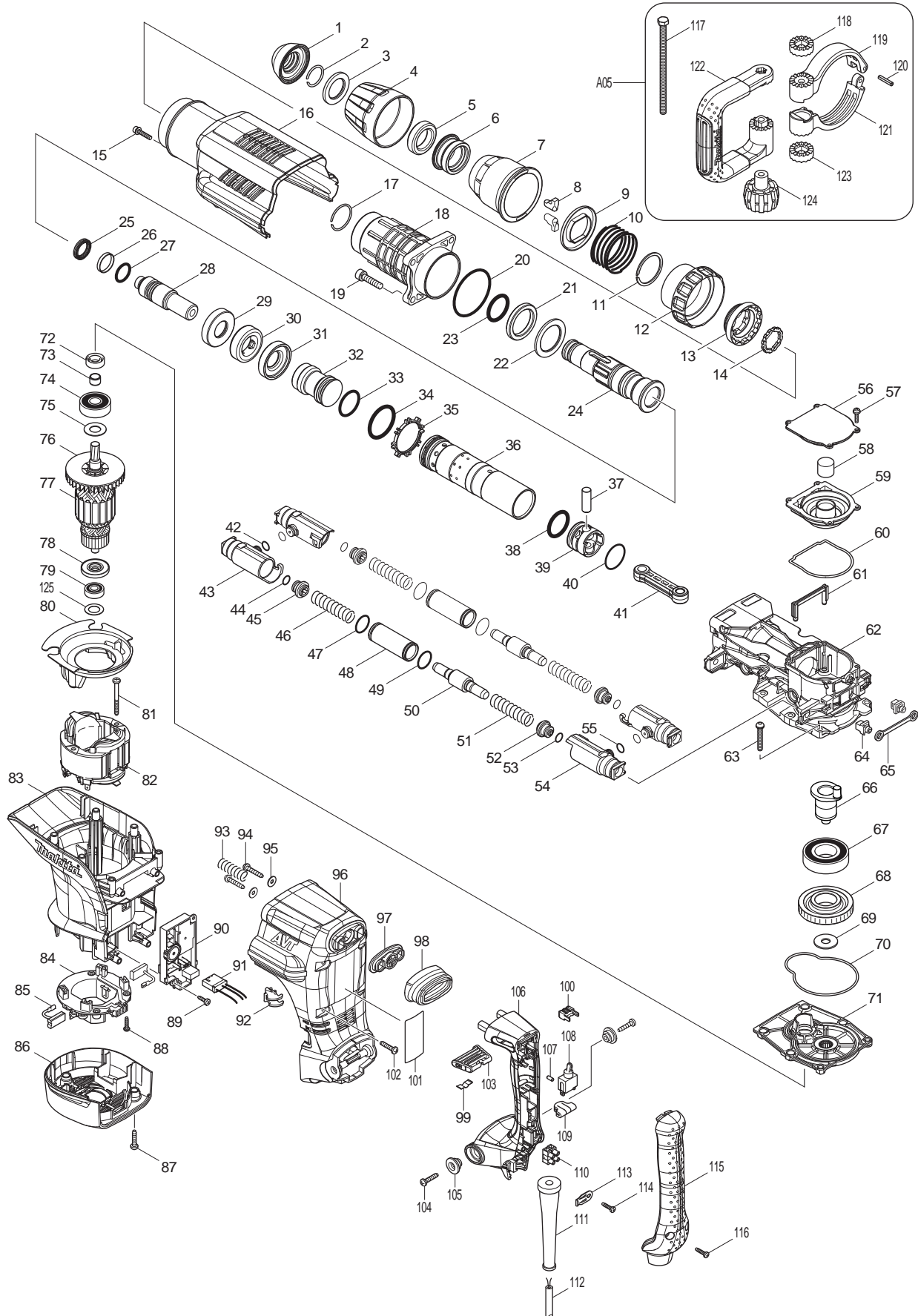




08 - 2010
HM1213C
23.8LB DEMOLITION HAMMER



Item No	Type	Ref	Part No	Description	Qty	Unit
1			424165-8	TOOL HOLDER CAP	1	PC.
2			233973-4	RING SPRING 26	1	PC.
3			267386-7	FLAT WASHER 30	1	PC.
4			450894-7	CHUCK COVER	1	PC.
5			262147-0	RUBBER RING 30	1	PC.
6			324987-5	CHUCK RING	1	PC.
7			450895-5	RELEASE COVER	1	PC.
8			310279-8	TOOL RETAINER	2	PC.
9			346015-6	SPRING GUIDE	1	PC.
10			234086-4	COMPRESSION SPRING 56	1	PC.
11			961232-3	RETAINING RING WR-45	1	PC.
12			450893-9	CHANGE RING COVER	1	PC.
13			324969-7	CHANGE RING	1	PC.
14			324988-3	LOCK RING	1	PC.
15			922243-3	HEX. SOCKET HEAD BOLT M5X25	1	PC.
16			450902-4	HOUSING COVER	1	PC.
17			233970-0	RING SPRING 35	1	PC.
18			158858-2	BARREL COMPLETE	1	PC.
19			922456-6	HEX. SOCKET HEAD BOLT M8X35	4	PC.
20			213720-9	O RING 67	1	PC.
21			262148-8	RUBBER RING 39	1	PC.
22			267387-5	FLAT WASHER 39	1	PC.
23			213079-4	O-RING 35.5	1	PC.
24			324985-9	TOOL HOLDER	1	PC.
25			213980-3	X-RING 21	1	PC.
26			213431-6	FLUORIDE RING 28	1	PC.
27			213394-6	O RING 23	1	PC.
28			324990-6	IMPACT BOLT	1	PC.
29			324993-0	SHOULDER SLEEVE	1	PC.
30			262149-6	RUBBER RING 24	1	PC.
31			324993-0	SHOULDER SLEEVE	1	PC.
32	1		324991-4	STRIKER - N/L/A	1	PC.
	2		326002-1	STRIKER	1	PC.
33			213499-2	O-RING 31.5	1	PC.
34			213581-7	O-RING 44	1	PC.
35			450889-0	ONE WAY VALVE GUIDE	1	PC.
36	1		331848-2	CYLINDER 40	1	PC.
	2		331925-0	CYLINDER 40	1	PC.
37			268121-6	PIN 12	1	PC.
38			213499-2	O-RING 31.5	1	PC.
39			450961-8	PISTON	1	PC.
40			213149-9	O RING 35	1	PC.
41			450890-5	CONNECTING ROD	1	PC.
42			213118-0	O RING 12	2	PC.
43			318361-7	PIPE HOLDER	2	PC.
44			213118-0	O RING 12	2	PC.
45			419773-8	SPRING GUIDE	2	PC.
46			234085-6	COMPRESSION SPRING 15	2	PC.
47			213953-6	O RING 24	2	PC.
48			331745-2	PIPE 22	2	PC.
49			213953-6	O RING 24	2	PC.
50			324992-2	COUNTER WEIGHT	2	PC.
51			234085-6	COMPRESSION SPRING 15	2	PC.

Item No	Type	Ref	Part No	Description	Qty	Unit
52			419773-8	SPRING GUIDE	2	PC.
53			213118-0	O RING 12	2	PC.
54			318361-7	PIPE HOLDER	2	PC.
55			213118-0	O RING 12	2	PC.
56			450899-7	CRANK CAP COVER	1	PC.
57			911133-5	PAN HEAD SCREW M4X18	4	PC.
58			443127-7	FILTER	1	PC.
59			450898-9	CRANK CAP	1	PC.
60			424166-6	SEAL RING	1	PC.
61			450892-1	AIR PIPE	1	PC.
62			318363-3	CRANK HOUSING	1	PC.
63			266482-8	H.S.BOTTON HEAD SCREW M6X40	6	PC.
64			419008-7	FIX GUIDE	2	PC.
65			423366-5	CUSHION PLATE	1	PC.
66			324994-8	CRANK SHAFT	1	PC.
67			211424-7	BALL BEARING 6206LLU	1	PC.
68			226691-1	HELICAL GEAR 57	1	PC.
69			267398-0	FLAT WASHER 12	1	PC.
70			424167-4	SEAL RING	1	PC.
71			158859-0	GEAR HOUSING COMPLETE	1	PC.
72			213231-4	OIL SEAL 15	1	PC.
73			331596-3	SLEEVE 12	1	PC.
74			211249-9	BALL BEARING 6302LLU	1	PC.
75			267397-2	FLAT WASHER 15	1	PC.
76			240003-4	FAN 80	1	PC.
		INC.		Item No. 73, 74, 75, 76, 78, 79	1	PC.
77			517816-1	ARMATURE ASSEMBLY 115V	1	PC.
78			681642-5	INSULATION WASHER	1	PC.
79	2		211289-7	BALL BEARING 6000DDW	1	PC.
80			450900-8	BAFFLE PLATE	1	PC.
81			266095-5	TAPPING SCREW 5X55	2	PC.
82			636301-6	FIELD 115V	1	PC.
83			450904-0	MOTOR HOUSING	1	PC.
84	1		638447-4	* BRUSH HOLDER UNIT	1	PC.
	2		632D00-2	* BRUSH HOLDER UNIT	1	PC.
85	2		194990-8	CARBON BRUSH CB-171 2PC/SET (W/ ORIGIN)	1	SET
	3		195845-0	CARBON BRUSH CB-175 2PC/SET (W/ ORIGIN)	1	SET
86			450901-6	REAR COVER	1	PC.
87			266041-8	TAPPING SCREW 5X25	3	PC.
88			265995-6	TAPPING SCREW 4X18	4	PC.
89	1		266192-7	* TAPPING SCREW 4X14	2	PC.
	2		266300-0	* TAPPING SCREW 4X18	2	PC.
90			631893-0	CONTROLLER	1	PC.
91			638650-7	LEAD UNIT	1	PC.
92			419010-0	LENS	1	PC.
93			233434-4	COMPRESSION SPRING 11	1	PC.
94			266173-1	TAPPING SCREW 5X30	2	PC.
95			253807-5	FLAT WASHER 5	2	PC.
96			450905-8	HANDLE BASE	1	PC.
97			419783-5	DUST COVER SUPPORT	1	PC.
98			424001-8	DUST COVER	1	PC.
99			232209-8	LEAF SPRING	1	PC.
100			450891-3	LEVER STOPPER	1	PC.

Item No	Type	Ref	Part No	Description	Qty	Unit
101	1		866631-3	NAME PLATE F/HM1213C	1	PC.
	2		814S58-5	NAME PLATE F/HM1213C	1	PC.
102			266041-8	TAPPING SCREW 5X25	6	PC.
103			450896-3	SLIDE LEVER	1	PC.
104			266041-8	TAPPING SCREW 5X25	2	PC.
105			313124-6	SHOULDER SLEEVE 6	2	PC.
106			450906-6	HANDLE	1	PC.
107			263027-3	RUBBER PIN 4	1	PC.
108			651423-1	SWITCH, SINGLE	1	PC.
109			423379-6	SPONGE SHEET	1	PC.
110			654531-7	TERMINAL BLOCK 2P	1	PC.
111			682560-0	CORD GUARD 10	1	PC.
112			664471-1	CORD W/PLUG 2P-14-5.0M, SJ	1	PC.
113			687169-3	STRAIN RELIEF	1	PC.
114			265995-6	TAPPING SCREW 4X18	1	PC.
115			450908-2	HANDLE COVER	1	PC.
116			265995-6	TAPPING SCREW 4X18	2	PC.
117			265439-6	HEX. BOLT M8X150	1	PC.
118			417002-3	SIDE HANDLE CAM	1	PC.
119			318505-9	SIDE HANDLE BASE 82A	1	PC.
120			951166-8	SPRING PIN 5-24	1	PC.
121			318506-7	SIDE HANDLE BASE 82B	1	PC.
122			417003-1	SIDE HANDLE	1	PC.
123			417002-3	SIDE HANDLE CAM	1	PC.
124			252640-2	WING NUT M8	1	PC.
125			267164-5	FLAT WASHER 15	1	PC.
200			652008-6	PAN HEAD SCREW M3.5X7 (F/SWITCH)	2	PC.

ACCESSORIES

- See catalogue or visit www.makita.ca for more optional accessories -

A01			751423-A	SDS-MAX BULL POINT 12"	1	PC.
A02	1		194659-4	GREASE VESSEL SET (TYPE1)	1	PC.
	2		194683-7	GREASE VESSEL SET,100CC (TYPE2)	1	PC.
A03			443122-7	CLOTH	1	PC.
A04			824908-2	PLASTIC CARRRYING CASE	1	PC.
		INC.	450990-1	HANDLE	1	PC.
		INC.	325637-5	SHAFT	1	PC.
		INC.	162271-8	LATCH	2	PC.
A05			135269-8	SIDE HANDLE 82 ASS'Y (D-shape)	1	PC.
		INC.		Item No. 117-124	1	PC.
A06			195114-9	HAMMER SERVICE KIT	1	PC.
		INC.	424165-8	TOOL HOLDER CAP	1	PC.
		INC.	213980-3	X RING 21	1	PC.
		INC.	213394-6	O RING 23	1	PC.
		INC.	213149-9	O RING 35	1	PC.
		INC.	213499-2	O RING 31.5	2	PC.
		INC.	213079-4	O RING 35.5	1	PC.
		INC.	262149-6	RUBBER RING 24	1	PC.
		INC.	262148-8	RUBBER RING 39	1	PC.
		INC.	213431-6	FLUORIDE RING 28	1	PC.
		INC.	195845-0	CARBON BRUSH CB-175 2PC/SET (W/ ORIGIN)	1	SET
		INC.	A-90582	HAMMER GREASE 30CC (1OZ)	2	PC.

Item No	Type	Ref	Part No	Description	Qty	Unit
A07			196571-4	DUST EXTRACTOR ATTACHMENT SET	1	PC.
	INC.		142350-8	HOSE COMPLETE 28 - 1.5	1	PC.
	INC.		417765-1	FRONT CUFF 22	1	PC.
	INC.		417766-9	FRONT CUFF 38	1	PC.
	INC.		415021-3	HOSE JOINT	1	PC.
	INC.		454749-8	HOSE HOLDER A	1	PC.
	INC.		454750-3	HOSE HOLDER B	1	PC.
	INC.		454809-6	HOSE HOLDER C	1	PC.
	INC.		-----	PLASTIC CASE LABEL (N/A Individually)	1	PC.
	INC.		-----	CARTON (Master) (N/A Individually)	1	PC.
	INC.		-----	Instruction Manual 30Language (N/A Individually)	1	PC.