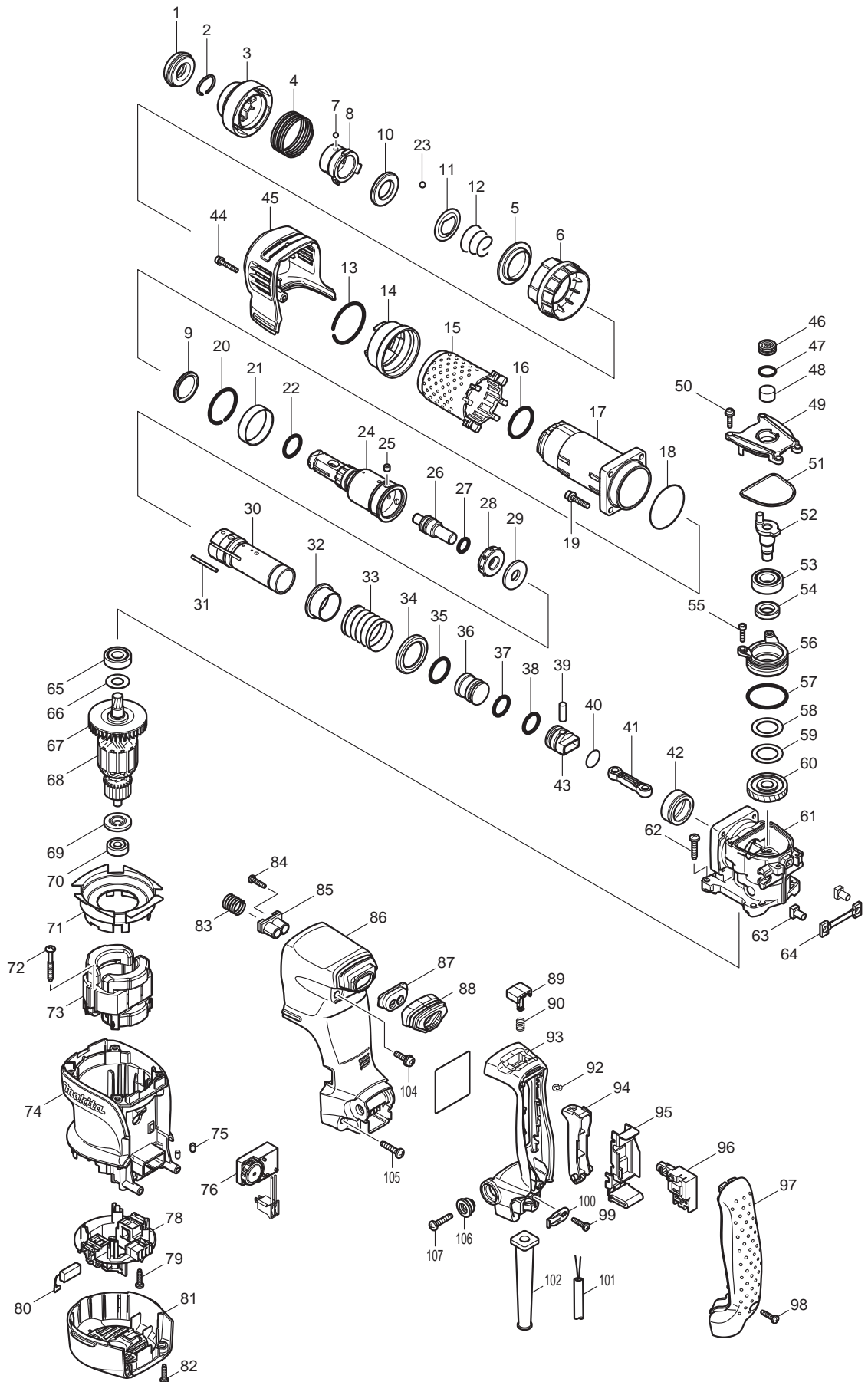




02 - 2009
HK1820
SDS-PLUS POWER SCRAPER



Item No.	Type	Sub	Part No.	Description (* See Service changes on the bottom)	Qty	Unit
1			286283-8	CAP 38	1	PC.
2			233966-1	RING SPRING 19	1	PC.
3			450275-5	CHUCK COVER	1	PC.
4			234039-3	COMPRESSION SPRING 42	1	PC.
5			345874-5	STEEL BALL GUIDE	1	PC.
6			450274-7	CHANGE RING	1	PC.
7			216002-8	STEEL BALL 4.8	3	PC.
8			331796-5	RING 25	1	PC.
9			262142-0	URETHAN RING 26	1	PC.
10			257288-5	RING 21	1	PC.
11			345873-7	GUIDE WASHER	1	PC.
12			233916-6	CONICAL COMP. SPRING 21-29	1	PC.
13			231985-1	RING SPRING 43	1	PC.
14			450273-9	BARREL COVER SUPPORT	1	PC.
15			424066-0	BARREL COVER	1	PC.
16			213465-9	O RING 31	1	PC.
17			318196-6	BARREL	1	PC.
18			213606-7	O RING 48	1	PC.
19			922243-3	HEX. SOCKET HEAD BOLT M5X25	4	PC.
20			233956-4	RING SPRING 37	1	PC.
21	1		257290-8	* RING 39	1	PC.
	2		257296-6	* RING 39	1	PC.
22			213008-7	O RING 22.4	1	PC.
23			216022-2	STEEL BALL 7.0	2	PC.
24			324837-4	TOOL HOLDER	1	PC.
25	1		256266-2	* PIN 6	3	PC.
	2		268226-2	* PIN 6	3	PC.
26			324844-7	IMPACT BOLT	1	PC.
27			213128-7	O RING 12	1	PC.
28			424065-2	RUBBER RING 13	1	PC.
29			267363-9	FLAT WASHER 12	1	PC.
30	1		331804-2	* CYLINDER	1	PC.
	2		331849-0	* CYLINDER	1	PC.
31	1		256833-3	* ROD 3	3	PC.
	2		256862-6	* ROD 2.5	3	PC.
32			331799-9	RING 29	1	PC.
33			234041-6	COMPRESSION SPRING 32	1	PC.
34			345872-9	CUP WASHER 29	1	PC.
35			213435-8	* O RING 26 (Old)	1	PC.
36			324847-1	STRIKER	1	PC.
37			213283-5	O-RING 18	1	PC.
38			213283-5	O-RING 18	1	PC.
39			256087-2	PIN 7	1	PC.
40			213262-3	O RING 18	1	PC.
41			450278-9	CONNECTING ROD	1	PC.
42			331797-3	SLEEVE 29	1	PC.
43			450298-3	PISTON	1	PC.
44			922148-7	HEX. SOCKET HEAD BOLT M4X25	1	PC.
45			450277-1	CRANK HOUSING COVER	1	PC.
46			419988-7	FILTER CAP	1	PC.
47			213218-6	O RING 16	1	PC.
48			443129-3	FILTER	1	PC.
49			450276-3	CRANK CAP	1	PC.
50			911133-5	PAN HEAD SCREW M4X18	4	PC.
51			424067-8	SEAL RING	1	PC.
52			324845-5	CRANK SHAFT	1	PC.
53			211232-6	BALL BEARING 6002LLU	1	PC.

Item No.	Type	Sub	Part No.	Description (* See Service changes on the bottom)	Qty	Unit
54			213219-4	OIL SEAL 15	1	PC.
55			265490-6	HEX. SOCKET HEAD BOLT M4X16	2	PC.
56			318202-7	BEARING BOX	1	PC.
57			213513-4	O RING 39	1	PC.
58			267126-3	FLAT WASHER 22	1	PC.
59			267126-3	FLAT WASHER 22	1	PC.
60			226675-9	HELICAL GEAR 36	1	PC.
61			158523-3	CRANK HOUSING COMPLETE	1	PC.
		INC.	213415-4	O RING 28	1	PC.
62			266041-8	TAPPING SCREW 5X25	4	PC.
63			331798-1	FIX GUIDE	2	PC.
64			424068-6	CUSHION PLATE	1	PC.
65			211131-2	BALL BEARING 6001DDW	1	PC.
66			253748-5	FLAT WASHER 12	1	PC.
67			241879-2	FAN 60	1	PC.
68			513741-4	ARMATURE ASS'Y 115V	1	PC.
		INC.		Item No. 65-67,69,70		
69			681644-1	INSULATION WASHER	1	PC.
70			210005-4	BALL BEARING 608DDW	1	PC.
71			450265-8	BAFFLE PLATE	1	PC.
72			266211-9	TAPPING SCREW 5X40	2	PC.
73			625806-1	FIELD 115V	1	PC.
74			450263-2	MOTOR HOUSING	1	PC.
75			263002-9	RUBBER PIN 4	2	PC.
76			631779-8	CONTROLLER	1	PC.
78			638393-1	BRUSH HOLDER UNIT	1	PC.
79			265995-6	TAPPING SCREW 4X18	4	PC.
80	1		194160-9	CARBON BRUSH CB-350 2PC/SET (W/O ORIGIN)	1	SET
	2		195004-6	CARBON BRUSH CB-350 2PC/SET (W/ ORIGIN)	1	SET
81			450264-0	REAR COVER	1	PC.
82			265995-6	TAPPING SCREW 4X18	2	PC.
83			234022-0	COMPRESSION SPRING 14	1	PC.
84			265995-6	TAPPING SCREW 4X18	2	PC.
85			450280-2	SPRING GUIDE	1	PC.
86			450272-1	HANDLE BASE	1	PC.
87			450279-7	DUST COVER SUPPORT	1	PC.
88			424069-4	DUST COVER	1	PC.
89			450271-3	LOCK ON BUTTON	1	PC.
90			234040-8	COMPRESSION SPRING 8	1	PC.
92			961011-9	STOP RING E-4	1	PC.
93			188495-8	HANDLE SET	1	PC.
94			450269-0	SWITCH LEVER	1	PC.
95			158522-5	SWITCH HOLDER COMPLETE	1	PC.
96			650597-5	SWITCH TG71BS-1	1	PC.
97			450267-4	HANDLE COVER	1	PC.
98			265995-6	TAPPING SCREW 4X18	1	PC.
99			265995-6	TAPPING SCREW 4X18	1	PC.
100			687169-3	STRAIN RELIEF	1	PC.
101			660023-6	CORD W/PLUG 2P-18-5.0M, SJ	1	PC.
102			682572-3	CORD GUARD 8	1	PC.
104			911234-9	PAN HEAD SCREW M5X20	2	PC.
105			266041-8	TAPPING SCREW 5X25	2	PC.
106			313139-3	SHOULDER SLEEVE 6	2	PC.
107			266041-8	TAPPING SCREW 5X25	2	PC.
108			423122-3	* CUSHION PLATE (Old)	3	PC.
109			213142-3	* O-RING 35 (Add)	1	PC.
200			158024-1	HOOK COMPLETE	1	PC.

Item No.	Type	Sub	Part No.	Description (* See Service changes on the bottom)	Qty	Unit
<u>ACCESSORIES</u>						
A01			824789-4	-See Catalogue or visit www.makita.ca for optional accessory - PLASTIC CARRYING CASE	1	PC.
		INC.	324207-7	SHAFT	1	PC.
		INC.	417724-5	LATCH	2	PC.
		INC.	419216-0	HANDLE	1	PC.
A02	Opt.		188500-1	HAMMER SERVICE KIT	1	PC.