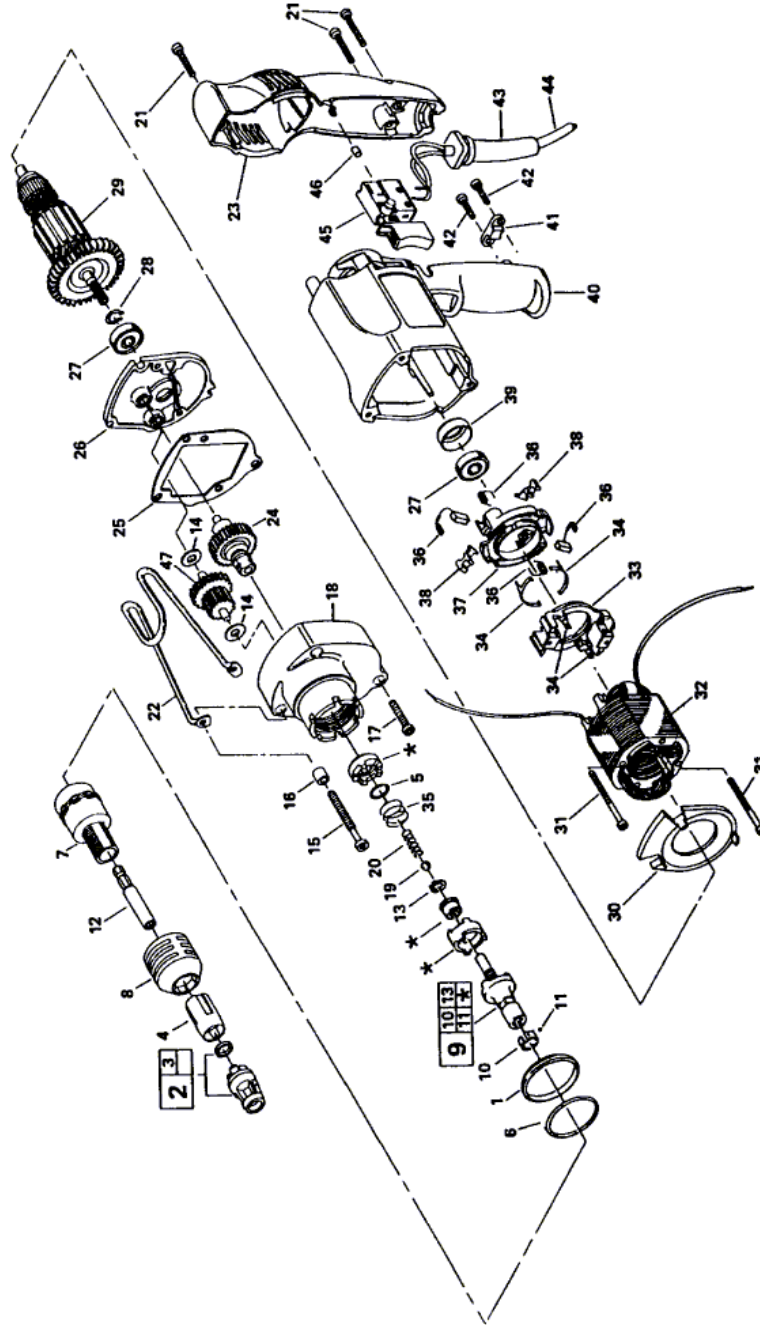


## Screwdriver - F 012 690 900 - HD 6909 TYPE 1

Item	Part Number	Description	Illustration	Price	Quantity	Price Group
1	3 600 113 506	Insulating Sleeve GRAY	1	-,-	1	13
2	2 610 906 321	Depth-Gauge	1	-,-	1	24
3	3 600 290 502	Seal ring	1	-,-	1	15
4	3 600 360 505	Spacer Sleeve BLACK	1	-,-	1	21
5	3 600 200 516	Retaining ring	1	-,-	1	12
6	3 600 210 506	O-Ring	1	-,-	1	13
7	2 610 904 940	Housing	1	-,-	1	-
8	3 600 390 502	Locking Ring BLACK	1	-,-	1	22
9	3 606 441 503	Clutch	1	-,-	1	40
10	3 600 034 504	Ball Support	1	-,-	1	14
11	1 903 230 006	Ball DIN 5401-3,5 MM-III-ST	1	-,-	1	10
12	3 603 008 500	Toolholder 1/4"	1	-,-	1	26
13	3 600 118 502	Spring retaining ring	1	-,-	1	12
14	2 610 348 611	Washer	1	-,-	1	11
15	2 610 350 943	Screw	1	-,-	2	11
16	2 610 350 941	Shim washer	1	-,-	2	12
17	2 610 348 621	Screw	1	-,-	1	11
18	2 610 904 726	Gear Housing	1	-,-	1	-
19	1 903 230 011	Ball DIN 5401-6 G28	1	-,-	1	10
20	3 604 613 507	Spring	1	-,-	1	12
21	2 610 348 622	Screw	1	-,-	1	11
22	2 610 350 939	Clip	1	-,-	1	21
23	2 610 905 360	Set Of Handles	1	-,-	1	15
24	2 610 904 724	Shaft	1	-,-	1	-
25	2 610 348 570	Seal	1	-,-	1	11
26	2 610 348 595	Bearing cover	1	-,-	1	25
27	2 610 351 861	Ball Bearing	1	-,-	1	23
28	2 610 931 268	Retaining snap ring	1	-,-	1	-
29	2 610 348 589	Armature 120V	1	-,-	1	-
30	2 610 348 586	Baffle	1	-,-	1	13
31	2 610 348 628	Screw	1	-,-	1	11
32	2 610 350 354	Stator 120V	1	-,-	1	11
33	2 610 348 613	Carrier	1	-,-	1	14

Item	Part Number	Description	Illustration	Price	Quantity	Price Group
34	2 610 350 352	Contact Breaker	1	-,-	1	15
35	3 604 613 506	Spring	1	-,-	1	12
36	2 610 353 931	Carbon-Brush Set	1	-,-	1	22
37	2 610 348 614	Carrier	1	-,-	1	21
38	2 610 909 603	Lever	1	-,-	1	11
39	1 619 P01 127	Rubber Ring	1	-,-	1	10
40	2 610 905 362	Housing	1	-,-	1	26
41	2 610 064 973	Cable Grip	1	-,-	1	11
42	2 610 315 386	Screw ST3,9x19	1	-,-	1	11
43	2 610 313 327	Grommet	1	-,-	1	14
44	2 610 350 903	Power supply cord	1	-,-	1	27
45	2 610 910 313	On-Off Switch	1	-,-	1	34
46	2 610 028 780	Plug	1	-,-	1	11
47	2 610 350 933	Toothed Gear	1	-,-	1	32

Illustration - Type E



F012690900  
 Stand }  
 Issue } 00-05-25  
**Fig./Abb. 1**

Änderungen vorbehalten  
 Modifications reserved  
 Modifications reserves  
 Salvo modificaciones

Information subject to change without further notice.