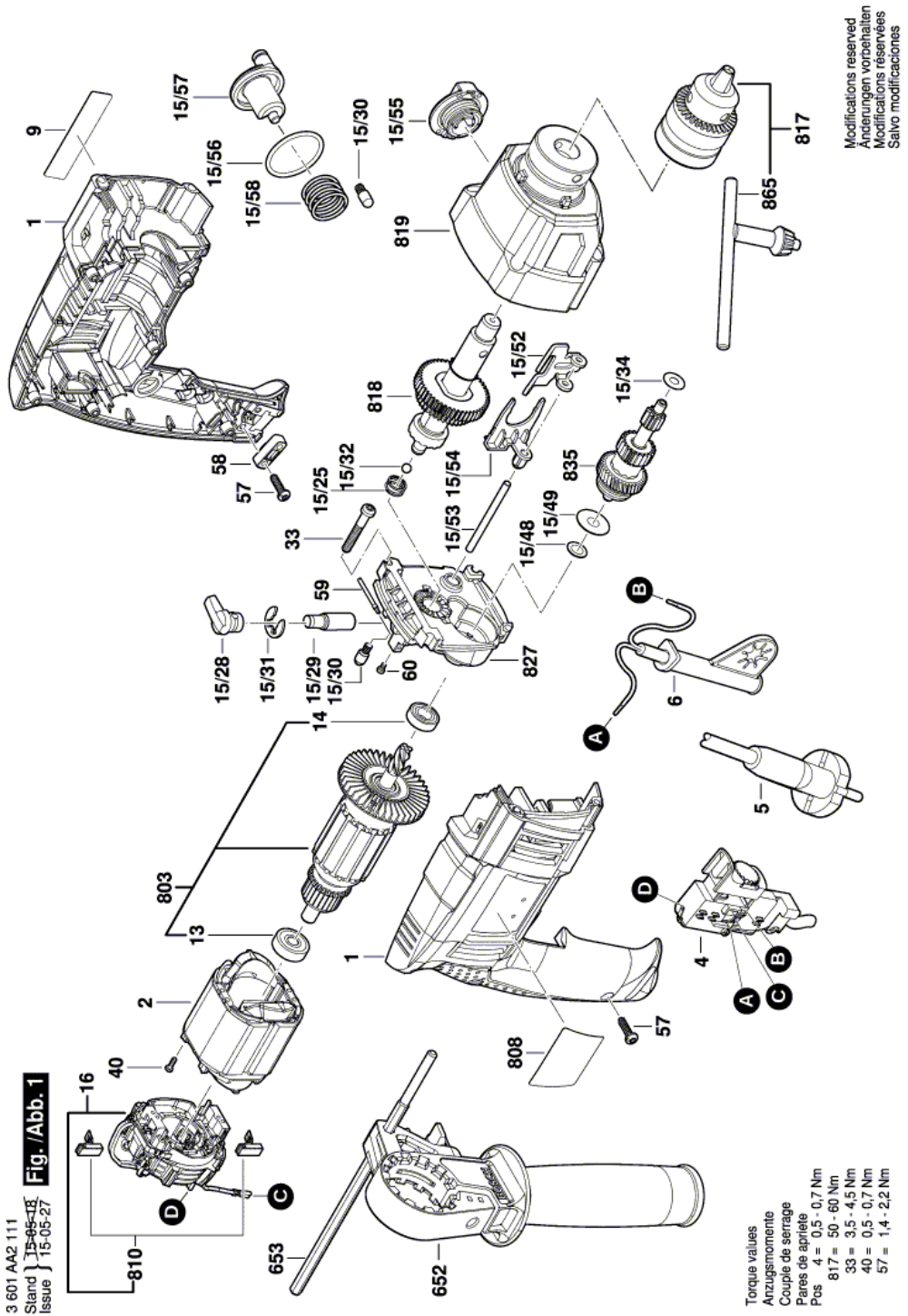


Illustration - Type E



Information subject to change without further notice.

Percussion Drill - 3 601 AA2 111 - HD 18-2

www.powertools-aftersaleservice.com



BOSCH

Item	Part Number	Description	Illustration	Price	Quantity	Price Group
	1 2 609 100 936	Motor Housing	1	-,-	1	29
	2 2 609 120 636	Field 120V	1	-,-	1	28
	4 1 607 200 272	Switch	1	-,-	1	33
	5 2 604 460 267	Power supply cord USA/CDN/SAM 4,15m 3 x 0,82mm SJ 18	1	-,-	1	34
	6 2 600 707 060	Grommet Ø11,6-Ø12,5x84 MM	1	-,-	1	13
	9 2 609 133 448	Manufacturer's nameplate HD 18-2	1	-,-	1	13
	13 1 900 905 020	groove ball bearing DIN 625 627-2Z/C3	1	-,-	1	20
	14 1 900 905 021	groove ball bearing 9x24x7	1	-,-	1	17
15/25	2 604 616 006	Compression Spring	1	-,-	1	11
15/28	2 609 100 939	Knob	1	-,-	1	10
15/29	2 609 111 330	Control Shaft	1	-,-	1	18
15/30	2 600 590 006	Ratchet Cap	1	-,-	2	11
15/31	2 916 080 912	Locking Washer	1	-,-	1	10
15/32	1 903 230 010	Ball DIN 5401-5,5MM-III-ST	1	-,-	1	10
15/34	2 609 111 487	Shim	1	-,-	1	10
15/48	2 600 101 047	Shim 0,3 MM	1	-,-	1	11
15/49	2 600 550 008	Disc Spring	1	-,-	1	11
15/52	2 609 111 907	Adjusting Slide	1	-,-	1	14
15/53	2 609 111 220	Slide Pin	1	-,-	1	11
15/54	2 609 101 436	Holding Plate	1	-,-	1	10
15/55	2 609 101 419	Rotary Knob	1	-,-	1	10
15/56	2 600 206 025	O-Ring	1	-,-	1	10
15/57	2 609 111 893	Link Guide	1	-,-	1	19
15/58	2 604 651 026	Coiled Spring	1	-,-	1	11
	16 1 600 A00 C4D	Brush Plate	1	-,-	1	29
	33 2 609 111 383	Headless Screw	1	-,-	4	10
	40 2 910 611 002	Tapping Screw DIN 7981-ST2,2x9,5-C-H	1	-,-	2	10
	57 2 603 490 022	Torx Oval-Head Screw 4x16	1	-,-	8	10
	58 1 611 035 005	Cable Clip	1	-,-	1	11
	59 2 609 120 450	Grounding Cable	1	-,-	1	12
	60 2 918 040 046	Screw	1	-,-	1	10
	652 2 609 199 430	Auxiliary Handle	1	-,-	1	23
	653 2 603 001 009	Depth-Gauge	1	-,-	1	17

Item	Part Number	Description	Illustration	Price	Quantity	Price Group
803	2 609 199 452	Armature set 120V	1	-,-	1	36
808	2 609 136 363	Nameplate	1	-,-	1	13
810	2 609 120 658	Carbon Brush	1	-,-	1	-
817	1 608 571 080	Key Chuck Ø1,5-13 MM	1	-,-	1	32
818	2 609 199 446	Drilling Spindle	1	-,-	1	30
819	2 609 199 450	Gear Housing	1	-,-	1	31
827	2 609 199 830	Bearing Flange	1	-,-	1	30
835	2 609 199 447	Transmission	1	-,-	1	32
865	2 607 950 007	Chuck Wrench SG2	1	-,-	1	18