



BOSCH

Angle Grinder

GWS 24-230 JZ | 3 601 HC3 380

Table of Content

Spare parts list.....	2
Illustration - Type.....	4

Angle Grinder | GWS 24-230 JZ | 3 601 HC3 380

Spare parts list

Item	Part Number	Description			
1	1 619 P15 457	Motor Housing			
2	1 619 P14 999	Field			
5	1 619 P08 921	Power supply cord H07 RN-F	CN 4,15m 2 x 1,50mm		
6	1 619 P14 369	Grommet			
7	1 601 302 018	Fastening Clamp			
13	1 600 905 011	groove ball bearing	8x22x7		
14	1 600 905 028	groove ball bearing			
24	1 619 P16 039	Handle			
28	1 600 210 033	O-Ring	79,0x1,78 MM		
29	1 600 210 045	O-Ring	8,0x1,0 MM		
30	1 619 P15 274	Air Distributor			
31	1 600 591 07T	Air-Deflector Ring			
32	1 600 290 019	Retaining snap ring			
33	1 600 290 064	Rotary shaft lip seal	16 MM	BLUE	
34	1 600 190 020	Shim	0,15 MM	THICK	
34	1 600 190 021	Shim	0,3 MM	THICK	
34	1 600 190 022	Shim	0,1 MM	THICK	
34	1 600 190 037	Shim	0,2 MM	THICK	
34	1 600 190 038	Shim	0,25 MM	THICK	
34	1 600 190 039	Shim	0,35 MM	THICK	
34	1 600 190 040	Shim	0,4 MM	THICK	
35	1 600 205 034	Felt Washer			
37	1 600 290 036	Seal Ring	BLACK		
38	1 600 206 020	Rubber Ring	7 MM	WIDE	
39	1 600 206 030	Rubber Ring			
45	1 603 300 019	Hex Nut	M10, SW14		
51	2 600 910 001	Needle-Roller Bearing	Ø14 MM		
60	1 603 435 023	Thread-forming tap. Screw	TT M5x18 MM		
61	2 912 401 038	Tapping Screw	DIN 7981-4,8x38-C-Z-ST		
62	1 603 435 060	Tapping Screw	4,8x55		
63	1 603 410 014	Pan head screw	M4x10 MM		
64	1 603 435 042	Plastic-Cutting Screw	St3,9x12		
65	2 912 401 020	Tapping Screw	DIN 7981-3,9x19-C-Z-ST		
66	2 910 211 019	Tapping Screw	DIN 7971-ST3,9x16-F		

Spare parts list

Item	Part Number	Description	
67	1 603 435 024	Tapping Screw	C4,8x63 MM
69	2 916 650 905	Spring retaining ring	
85	1 619 P15 700	Dust Separator	
86	1 619 P16 040	Air Deflection	
803	1 619 P16 541	Armature	
804	1 619 P16 542	Switch	
808	1 619 P16 074	Label	
810	1 607 014 171	Carbon-Brush Set	
816	1 604 336 048	Brush Holder	
821	1 619 P15 871	Gear Housing	
822	1 619 P15 872	Bearing Flange	Ø 230MM
823	1 619 P15 945	Sealing cap	
825	1 619 P15 297	Grinding Spindle	
826	1 619 P15 948	Bevel Gear Set	230
835	1 600 A00 J93	Fan	
840	1 619 P15 752	Push-Button	
846	1 607 000 342	Retaining Washer	
882	1 619 P06 597	Stopper	
651	1 619 P15 668	Protective Cover	Ø230 MM
890	1 600 210 039	O-Ring	20,35x1,78 MM
891	1 619 P09 013	Auxiliary Handle	
891/1	1 602 025 09Z	Auxiliary Handle	
892	1 607 950 061	Pin-Type Face-Wrench	
893	2 605 703 014	Clamping Flange	Ø22,3xØ42 MM
894	1 603 345 043	Round Nut	M14
896	1 600 A01 6PP	Fast Locking Flange	
897	1 605 430 003	Grease Tube	225 ML
898	1 615 430 020	Grease Tube	225 ML

Illustration - Type - E

3 601 HC2 380
Stand } 20-11-26
Issue }

Fig. /Abb. 1

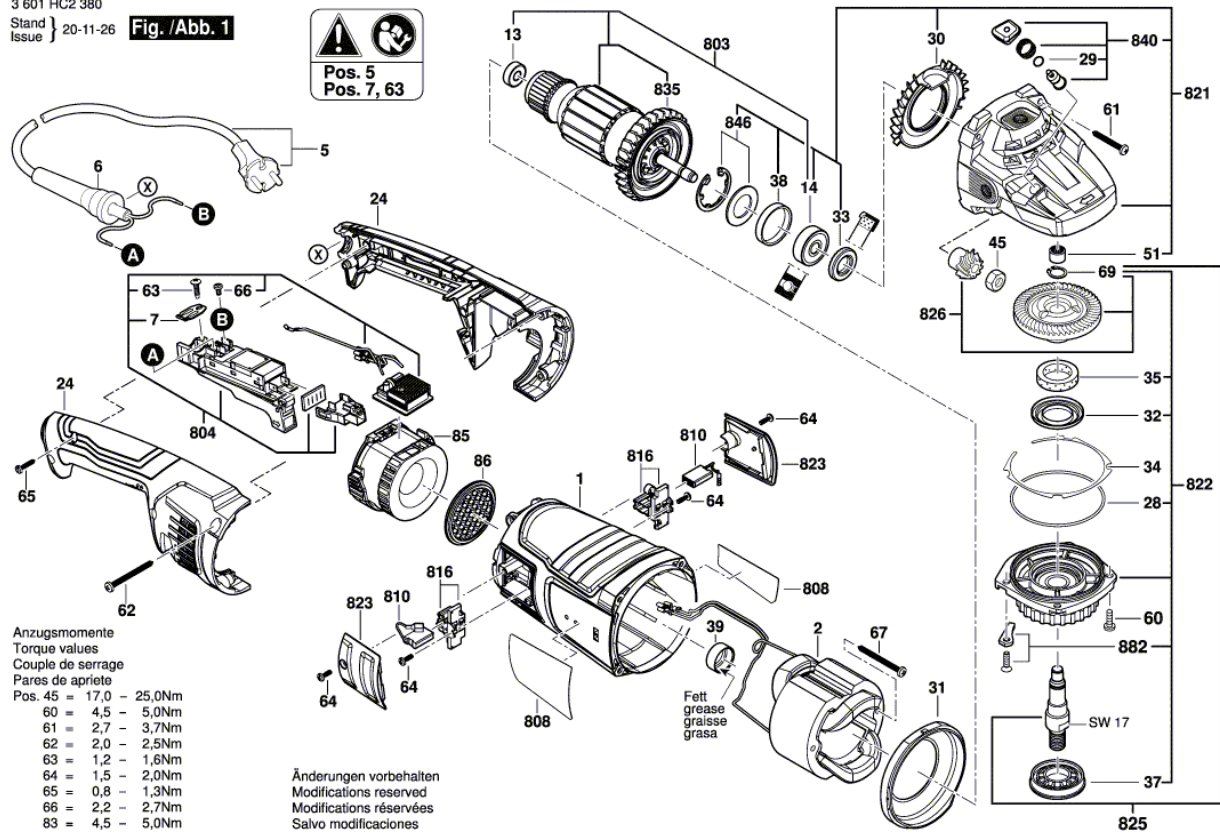
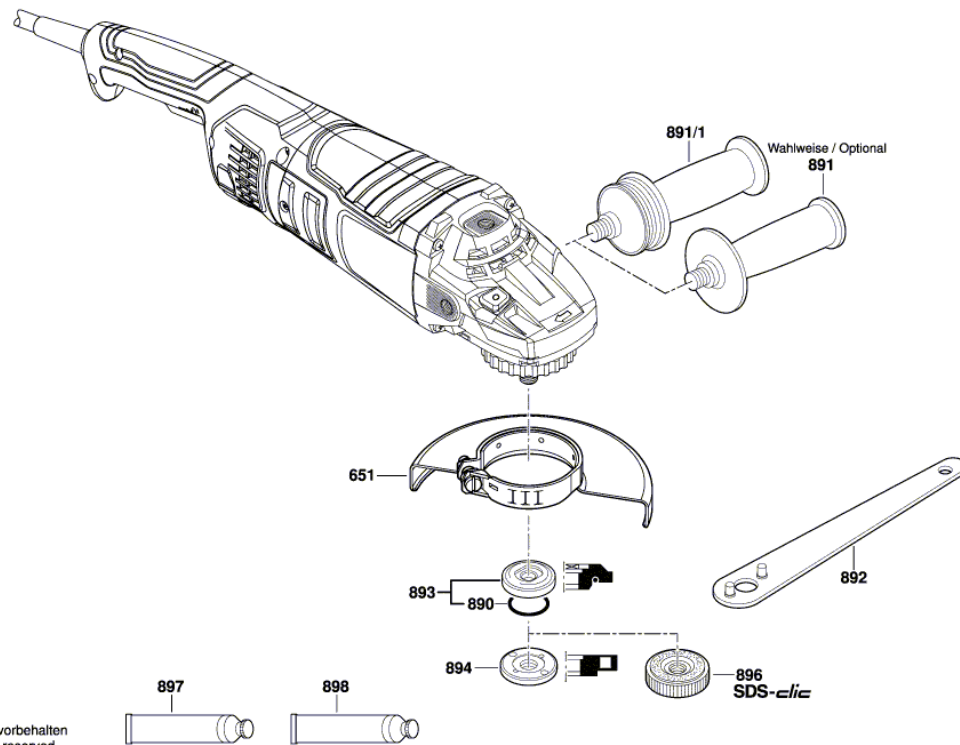


Illustration - Type - E

3 601 HC2 380
Stand } 20-11-26
Issue } **Fig. /Abb. 2**



Änderungen vorbehalten
Modifications reserved
Modifications réservées
Salvo modificaciones