



BOSCH

Angle Grinder

GWS 12-150 S | 3 601 CA6 083

Table of Content

| | |
|--------------------------|---|
| Spare parts list..... | 2 |
| Illustration - Type..... | 4 |

Spare parts list

| Item | Part Number | Description | | |
|------|---------------|---|---------------------|-------|
| 1 | 1 619 P20 936 | Motor Housing | | |
| 4 | 1 607 200 31S | Switch | | |
| 5 | 1 604 460 245 | Power supply cord H05 VV-F | CN 2,65m 2 x 0,75mm | |
| 6 | 1 600 703 039 | Grommet | | |
| 7 | 1 601 302 017 | Fastening Clamp | | |
| 8 | 1 619 P20 980 | Nameplate | | |
| 9 | 1 619 P20 981 | Manufacturer's nameplate | GWS 12-150 S | |
| 14 | 1 619 P09 955 | groove ball bearing | | |
| 16 | 1 600 A00 RG1 | Brush Holder | | |
| 17 | 1 604 652 013 | Spiral Spring | | |
| 18 | 1 619 P11 487 | Compression Spring | | |
| 21 | 1 619 P20 983 | Cap | | |
| 22 | 1 619 P20 940 | Adjusting Slide | | |
| 23 | 1 619 P21 162 | Switch Button | | |
| 27 | 1 600 206 025 | Rubber Ring | | |
| 29 | 1 619 P20 938 | Air-Deflector Ring | | |
| 30 | 1 619 P20 939 | Air Distributor | | |
| 32 | 1 619 P15 210 | Grinding Spindle | M14 | |
| 33 | 1 619 P14 427 | O-Ring | | |
| 35 | 1 600 136 013 | Shim | 0,1 MM | THICK |
| 35 | 1 600 136 014 | Shim | 0,2 MM | THICK |
| 36 | 1 619 P00 987 | Washer | | |
| 37 | 1 600 290 016 | Rotary shaft lip seal | | |
| 40 | 1 600 119 011 | Retaining clip | | |
| 41 | 1 600 910 018 | Needle bearing | Ø8xØ12x8 MM | |
| 45 | 1 619 P16 897 | Hex Nut | | |
| 47 | 2 609 110 052 | Special Screw | | |
| 48 | 1 619 P00 220 | Torx Oval-Head Screw | 3x10 | |
| 49 | 1 603 435 08X | Thread-forming tap. Screw Precote 85-3 | M4x16-St w/ | |
| 50 | 1 619 P00 105 | Torx Oval-Head Screw | 4x20 | |
| 51 | 1 607 233 5NX | Speed governor | GWS1200,220~240V | |
| 54 | 1 603 414 026 | Torx Oval-Head Screw | 4x30 | |
| 55 | 1 619 P01 066 | Torx Oval-Head Screw | 4x25 | |
| 62 | 3 600 210 109 | O-Ring | 47,0x1,5 MM | |

Spare parts list

| Item | Part Number | Description |
|-------------|--------------------|------------------------------|
| 69 | 2 916 540 007 | Retaining ring |
| 70 | 3 600 150 038 | Cover Disc |
| 80 | 1 619 P09 390 | Cover Disc |
| 802 | 1 619 P21 170 | Field |
| 803 | 1 619 P21 171 | Armature |
| 810 | 1 619 P21 172 | Carbon-Brush Set |
| 825 | 1 619 P21 173 | Housing Cover |
| 828 | 1 619 P21 175 | Bearing Flange |
| 831 | 1 619 P21 176 | Gear Housing |
| 838 | 1 619 P21 178 | Bevel Gear Set |
| 840 | 1 619 P21 177 | Push-Button |
| 843 | 1 607 000 742 | Catch Lever |
| 650/1 | 1 602 025 0A0 | Auxiliary Handle |
| 650/2 | 1 603 345 043 | Round Nut M14 |
| 650/3 | 1 607 950 052 | Pin-Type Face-Wrench |
| 650/5 | 2 605 703 014 | Clamping Flange Ø22,3xØ42 MM |
| 651 | 1 600 A02 5XT | Protective Cover |
| 894 | 1 615 430 020 | Grease Tube 225 ML |
| 895 | 1 605 430 003 | Grease Tube 225 ML |

Illustration - Type - E

3 601 CA6 022
Stand } 22-09
Issue } 22-10-21

Fig. /Abb. 1



Pos. 5
Pos. 7, 47

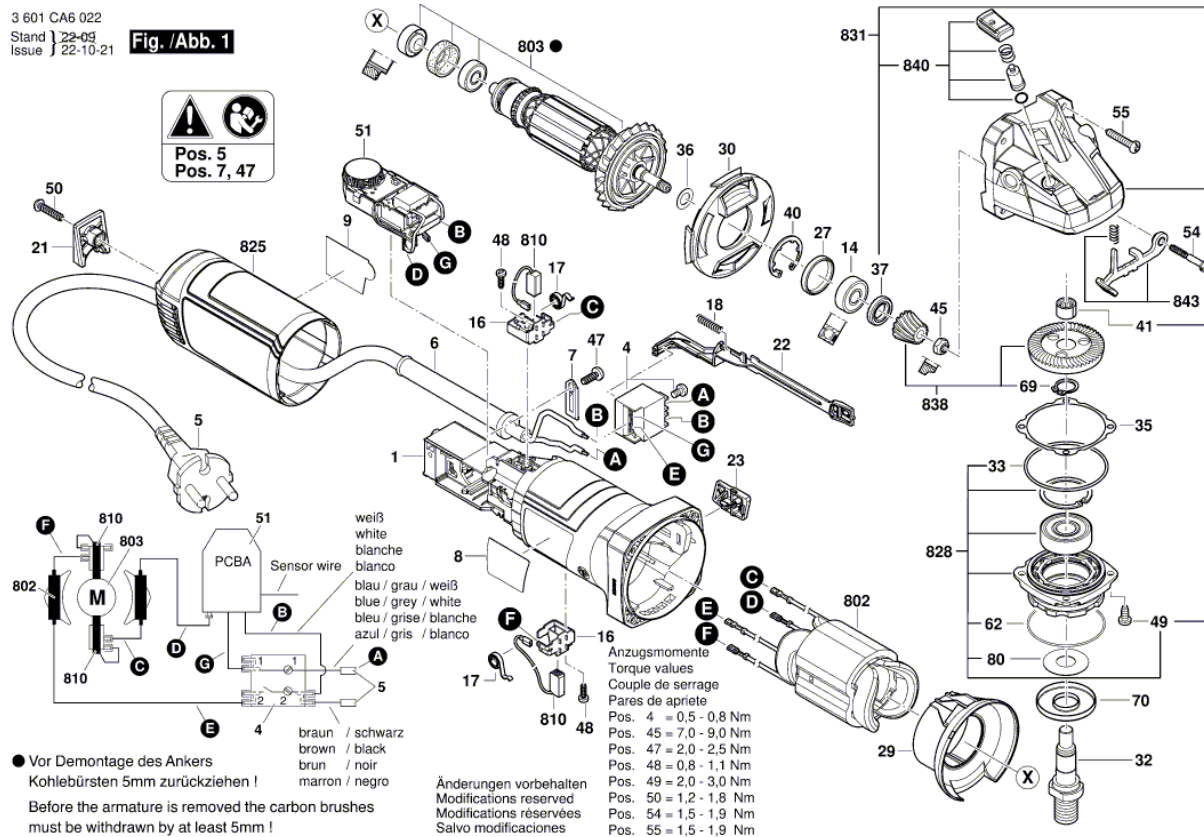
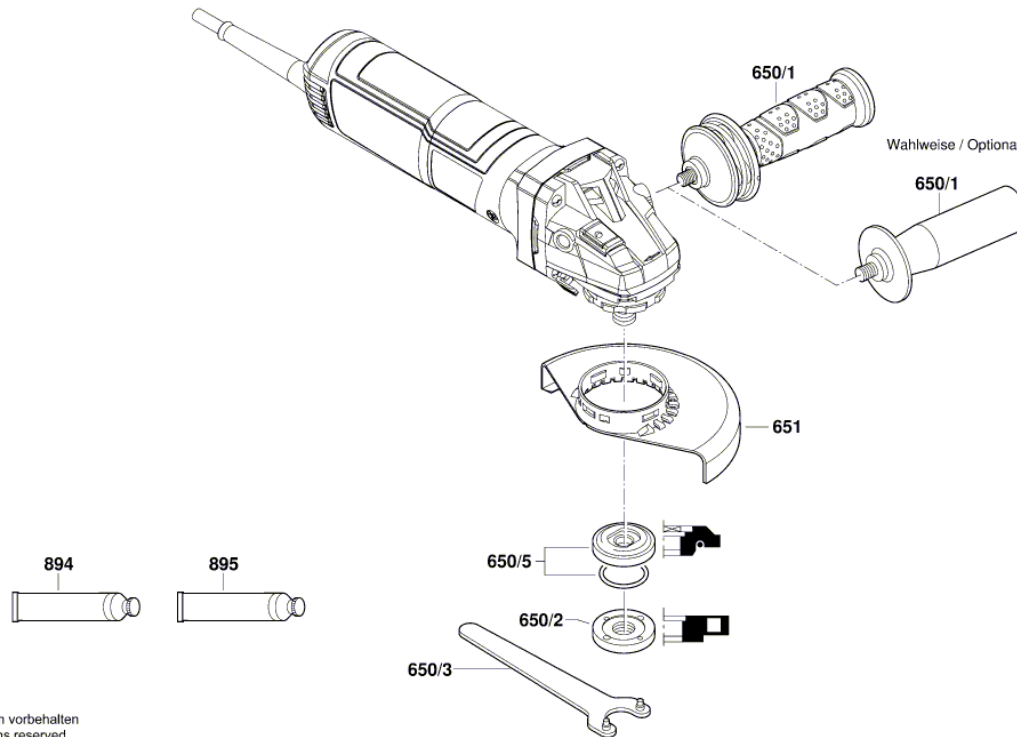


Illustration - Type - E

3 601 CA6 022

Stand } 22-08-16 **Fig./Abb. 2**
Issue }



Änderungen vorbehalten
Modifications reserved
Modificaciones reservadas
Salvo modificaciones