



BOSCH

False Joint Cutter

GUF 22 A | 0 601 607 039

Table of Content

Spare parts list.....	2
Illustration - Type.....	5

Spare parts list

Item	Part Number	Description	Illustration
201	1 605 108 2CC	Motor Housing	1
202	1 604 220 226	Field 110-120V	1
204	1 607 200 086	On-Off Switch	1
205	1 614 460 010	Power supply cord x 0,82mm SJ 16/2 USA/CAN/SMA 2,15m 2	1
206	2 600 703 013	Grommet Ø7,6-Ø8,2x95 MM	1
207	1 601 302 017	Fastening Clamp	1
209	3 601 119 054	Manufacturer's nameplate	1
212	1 607 328 029	Suppression Filter	1
213	2 600 905 032	Ball Bearing 7x19x6	1
214	1 600 905 011	groove ball bearing 8x22x7	1
215	1 606 610 121	Fan	1
217	1 601 110 231	Manufacturer's nameplate DOUBLE INSULATION	1
218	1 604 611 026	Compression Spring	1
222	1 602 319 002	Adjusting Slide	1
223	1 602 026 057	Switch Handle BLACK	1
225	1 600 508 010	Housing Cover BLUE	1
226	1 600 502 020	Rubber Bushing	1
227	1 600 206 025	Rubber Ring	1
228	1 607 000 937	Assembly Of Service Parts	1
229	1 601 328 005	Air-Deflector Ring	1
231	2 916 660 013	Retaining clip DIN 472-32x1,2 MM	1
235	1 600 136 008	Shim 0,7 MM THICK	1
235	1 600 136 009	Shim 0,8 MM THICK	1
235	1 600 136 010	Shim 0,2 MM THICK	1
236	1 600 150 011	Spring Washer	1
237	1 600 290 016	Rotary shaft lip seal	1
238	1 606 333 601	Crown Gear Z=36	1
239	1 604 652 013	Spiral Spring	1
240	2 916 660 009	Spring retaining ring DIN 472-25x1,2MM	1
241	1 600 910 018	Needle bearing Ø8xØ12x8 MM	1
242	1 600 905 006	groove ball bearing 12x32x10	1
243	1 606 333 242	Bevel Gear Z=11	1
245	1 603 300 016	Hex Nut M7, SW10	1
247	2 910 211 018	Tapping Screw DIN 7971-ST3,9x13-F	1

Spare parts list

Item	Part Number	Description	Illustration
248	1 613 435 034	Lens Head Screw 3x10 ST	1
249	1 603 412 008	Socket head cap screw M4x15 MM	1
250	2 910 211 021	Tapping Screw DIN 7971-ST3,9x22-F	1
253	1 604 448 005	Connecting Cable L=95 MM WHITE	1
254	1 604 448 006	Connecting Cable L=40 MM WHITE	1
266	1 601 110 449	Nameplate CAUTION	1
304	1 601 008 003	Insulating Plate	1
810	1 607 014 128	Carbon Brush	1
813	1 607 000 253	Push-Button BLACK	1
816	1 600 A00 3G4	Brush Holder	1
821	1 605 806 480	Gear Housing	1
830	1 604 010 261	Armature With Fan 115-120V	1
888	1 601 11A 3H3	Nameplate	1
2	3 608 641 010	Side-Milling Cutter Z=12	2
3	3 601 329 005	Base Plate	2
4	3 602 013 006	Swivelling Lever	2
5	3 605 500 101	Covering hood	2
6	3 604 651 003	Torsion Spring	2
7	3 603 490 009	Swivelling Axis	2
8	3 602 200 000	Eccentric Disc	2
9	2 607 950 004	Offset Screwdriver DIN 911-4	2
10	3 601 000 002	Thrust Member	2
11	3 601 329 004	Parallel-Guide	2
12	3 603 340 009	Round Nut M14	2
13	3 600 328 032	Clamping-Flange	2
14	2 602 305 045	Detent Pin	2
15	3 601 119 024	Sticker	2
16	1 601 110 481	Manufacturer's nameplate SHADOW SIDE	2
17	3 603 490 008	Knurled Thumbscrew	2
18	2 914 455 059	Thread-forming tap. Screw DIN 7500-M5x14MM	2
19	3 600 190 008	Locking Washer	2
20	2 604 611 008	Compression Spring	2
21	2 915 011 006	Hex Nut DIN 934-M 5-m-8	2
22	2 910 095 201	Pan head screw DIN 85-M6x20-4.8	2

Spare parts list

Item	Part Number	Description	Illustration
23	1 600 309 010	Spacer Bushing	2
24	2 910 141 154	Hex Socket Head Cap Screw DIN 912-M5x12-8.8	2
25	3 602 012 000	Support clamp	2
26	2 910 271 900	Pan head screw DIN 922-M4x3x3-5.8	2
29	2 600 100 577	Shim 0,5 MM	2
30	3 601 119 025	Sticker 13,16,19+22 MM	2
31	3 601 251 001	Vertebras	2
32	2 916 015 886	Plain Washer DIN 9021-A10,5-ST	2
33	2 600 100 401	Shim washer 0,1 MM	2
650	1 602 025 09T	Auxiliary Handle	2
651	1 607 950 052	Pin-Type Face-Wrench	2
652	1 605 411 028	Dust Bag	2
653	3 601 329 013	Parallel-Guide	2
653/40	1 603 339 006	Wing Nut M6	2
653/50	2 910 281 201	Round-Head Bolt DIN 603-M6x20	2
653/60	2 910 545 193	Countersunk-Head Screw DIN 7991-M6x12-8.8	2
653/70	1 610 210 043	O-Ring 4,0x1,5 MM	2
700	3 608 641 001	Side-Milling Cutter Ø 105x20x2,2 MM, Z=12	2
700	3 608 641 009	Side-Milling Cutter Z=10, 2,8 MM	2
701	3 608 641 008	Side-Milling Cutter Z=8	2
702	1 600 499 005	Fitting Ø 25x35 MM	2

Illustration - Type - E

0 601 607 003
 Stand } 34-05
 Issue } 11-02-16

Fig./Abb. 1

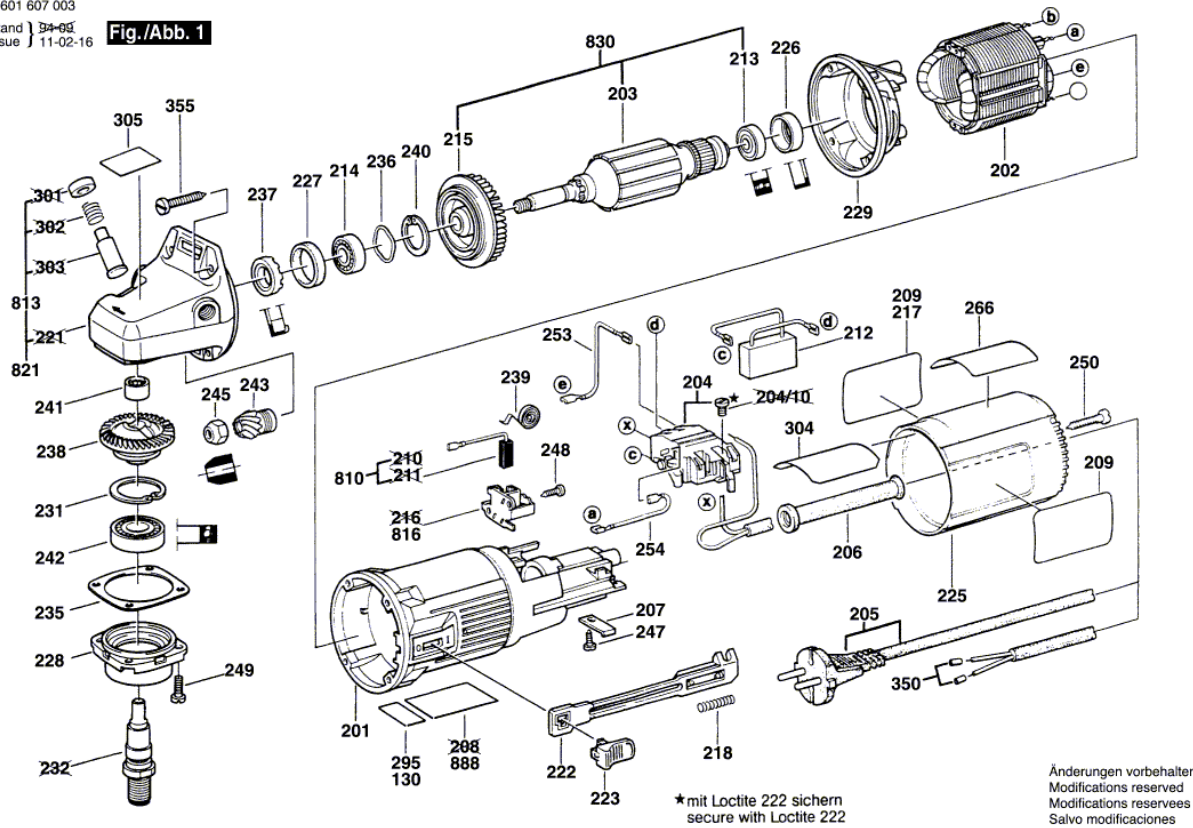
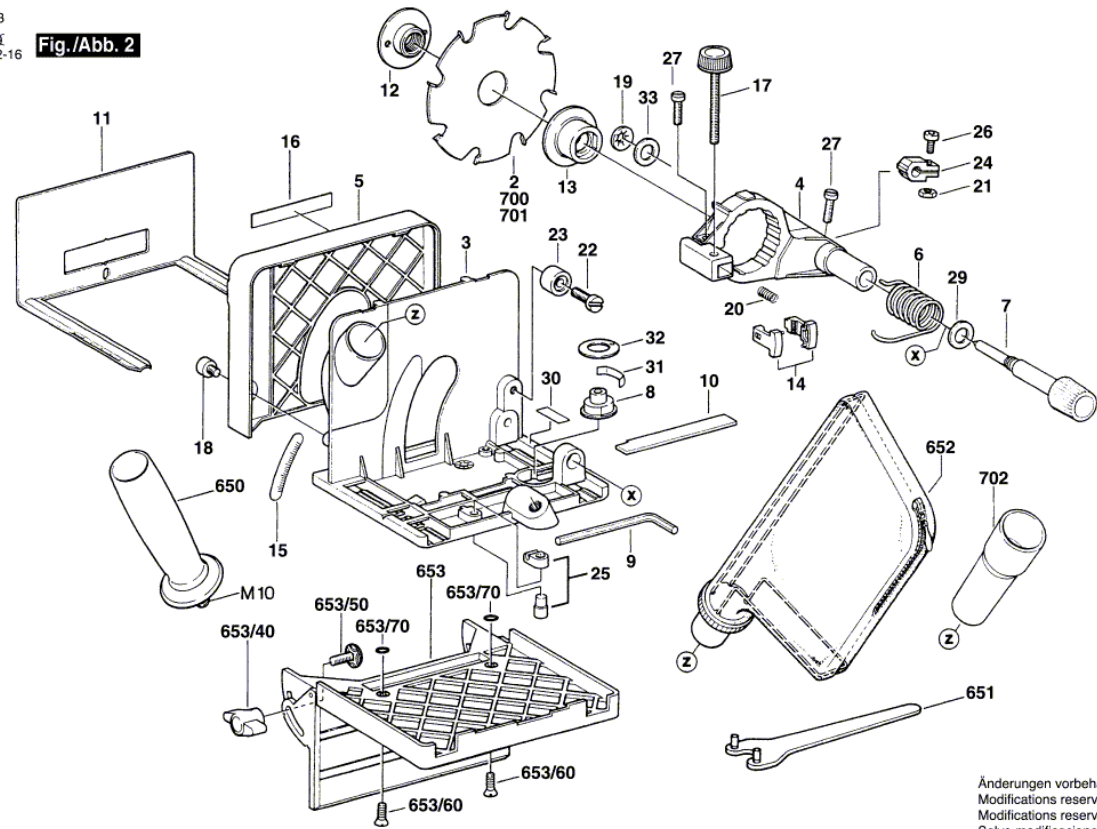


Illustration - Type - E

0 601 607 003
 Stand } 34-05
 Issue } 11-02-16

Fig./Abb. 2

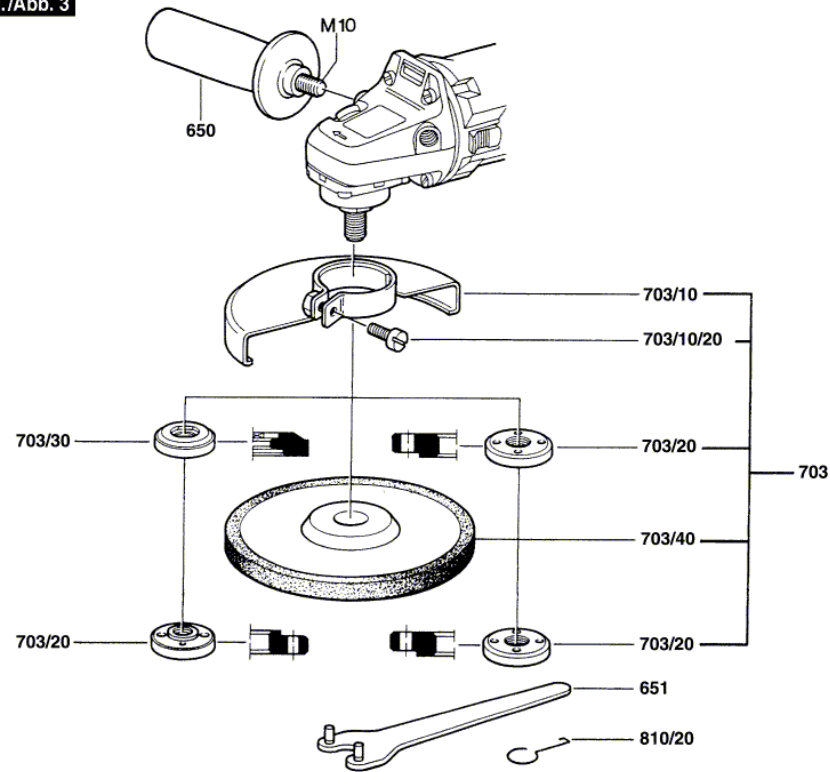


Änderungen vorbehalten
 Modifications reserved
 Modifications reserves
 Salvo modificaciones

Illustration - Type - E

0 601 607 003
Stand } 39-01
Issue } 94-09

Fig./Abb. 3



Änderungen vorbehalten
Modifications reserved
Modifications reserves
Salvo modificaciones