

**532 44 56-42**



# **Repair Parts Manual Manual De Repuestos**

**GTH24V52LS / 96043013500**

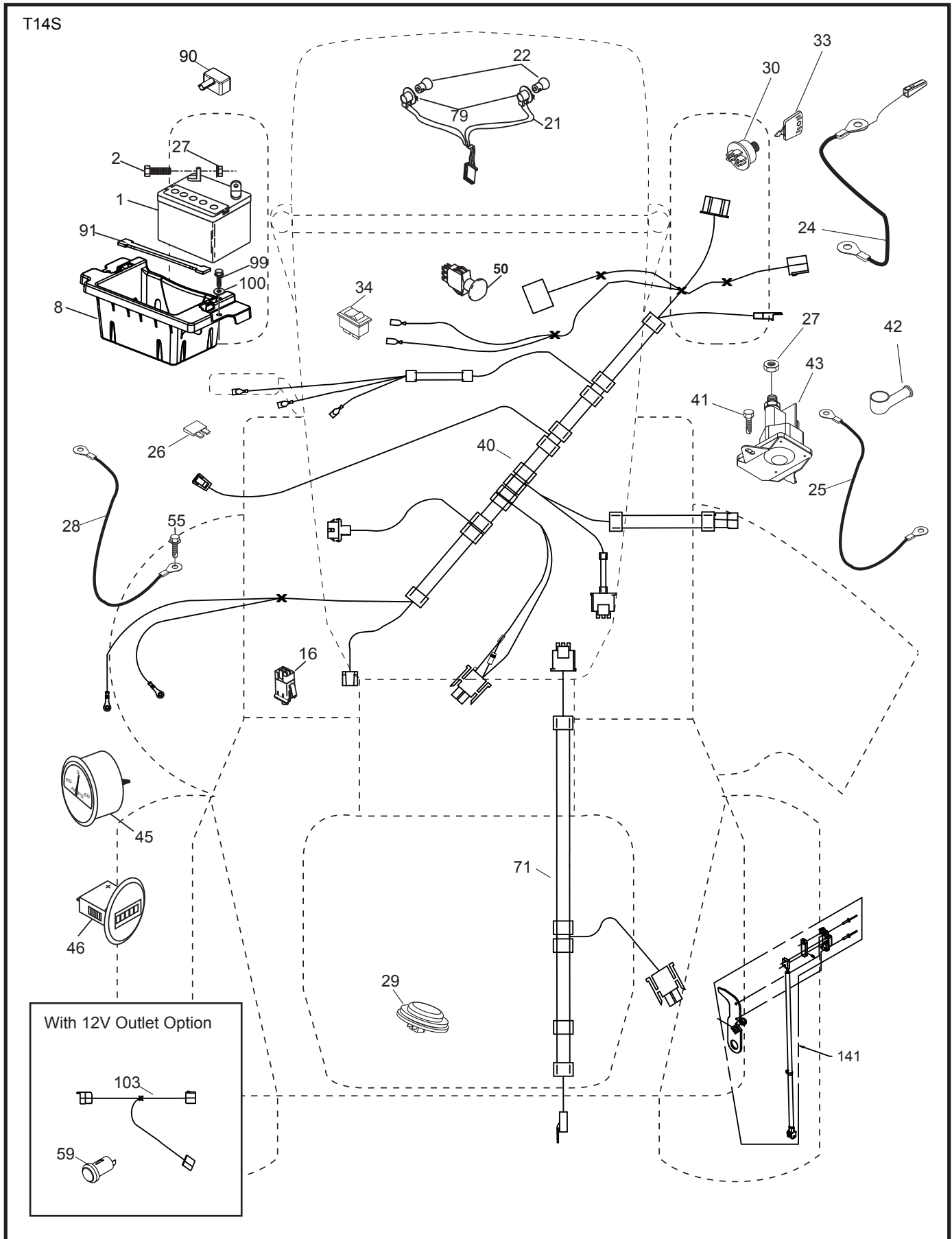
Please read the operator's manual carefully and make sure you understand the instructions before using the machine.

Por favor lea cuidadosamente y comprenda estas intrucciones antes de usar esta maquina.



**English/Spanish**

**TRACTOR - MODEL NO. GTH24V52LS (96043013500), PRODUCT NO. 960 43 01-35  
ELECTRICAL**

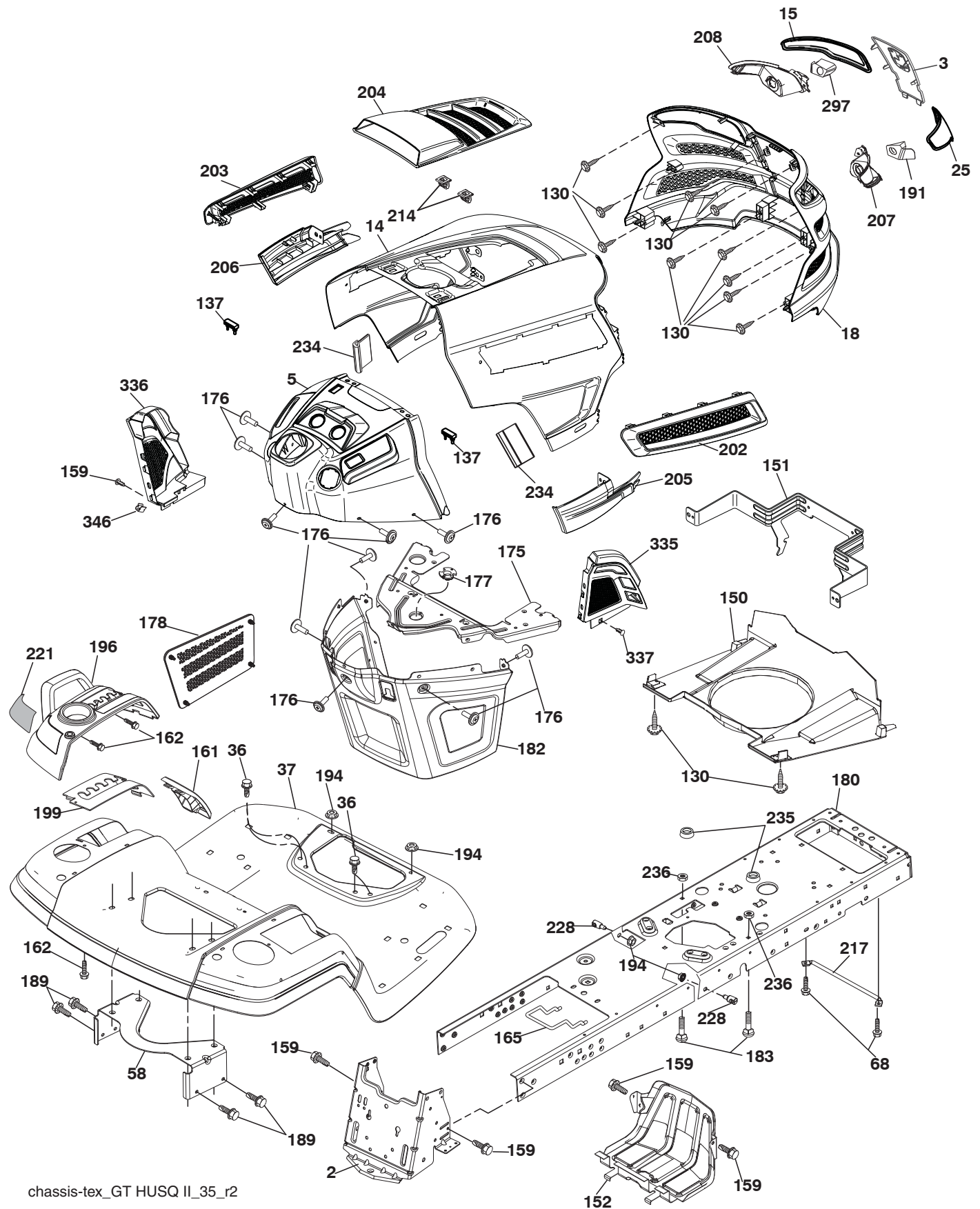


**TRACTOR - MODEL NO. GTH24V52LS (96043013500), PRODUCT NO. 960 43 01-35  
ELECTRICAL**

| <b>KEY NO.</b> | <b>PART NO.</b> | <b>DESCRIPTION</b>               |
|----------------|-----------------|----------------------------------|
| 1              | 532 16 34-65    | Battery                          |
| 2              | 874 76 04-12    | Bolt Hex Hd 1/4-20 unc x 3/4     |
| 8              | 532 41 41-25    | Battery Box                      |
| 16             | 532 17 61-38    | Switch Interlock                 |
| 21             | 532 40 02-52    | Harness Socket Light             |
| 22             | 532 00 41-52    | Bulb, Light #1156                |
| 24             | 532 40 02-53    | Cable Battery                    |
| 25             | 532 41 28-95    | Cable Starter                    |
| 26             | 532 17 51-58    | Fuse                             |
| 27             | 873 51 04-00    | Nut Keps Hex 1/4-20 unc          |
| 28             | 532 14 54-91    | Cable Ground 21" Blk 6 Ga.       |
| 29             | 532 40 15-45    | Switch Seat                      |
| 30             | 532 19 33-50    | Switch Ign                       |
| 33             | 532 41 19-33    | Key/Chain                        |
| 34             | 532 11 07-12    | Switch Light/Reset               |
| 40             | 532 40 21-67    | Harness Ign. Dash                |
| 41             | 817 72 04-08    | Screw 1/4-20 unc x 1/2           |
| 42             | 532 13 15-63    | Cover Terminal Red               |
| 43             | 532 19 25-07    | Solenoid                         |
| 45             | 532 42 52-70    | Ammeter Round                    |
| 46             | 532 42 52-71    | Gauge Hourmeter                  |
| 50             | 532 17 46-51    | Switch PTO                       |
| 55             | 817 06 05-12    | Screw Thdrol 5/16-18 x 3/4       |
| 59             | 532 40 03-03    | Outlet 12-Volt                   |
| 71             | 532 19 42-76    | Harness Ign Chassis              |
| 79             | 532 17 52-42    | Socket Asm. Bulb Twistlock       |
| 90             | 532 43 53-95    | Cover Terminal Battery           |
| 91             | 532 19 02-70    | Strap Battery                    |
| 99             | 817 67 04-12    | Screw Hexwsh Thdrol 1/4-20 x 3/4 |
| 100            | 819 09 14-16    | Washer 9/32 x 7/8 x 16 Ga.       |
| 103            | 532 42 17-47    | Harness Pigtail 12V Outlet       |
| 141            | 532 42 12-25    | Kit G700/G730 ROS                |

**NOTE:** All component dimensions given in U.S. inches  
1 inch = 25.4 mm

**TRACTOR - MODEL NO. GTH24V52LS (96043013500), PRODUCT NO. 960 43 01-35  
CHASSIS**



chassis-tex\_GT HUSQ II\_35\_r2

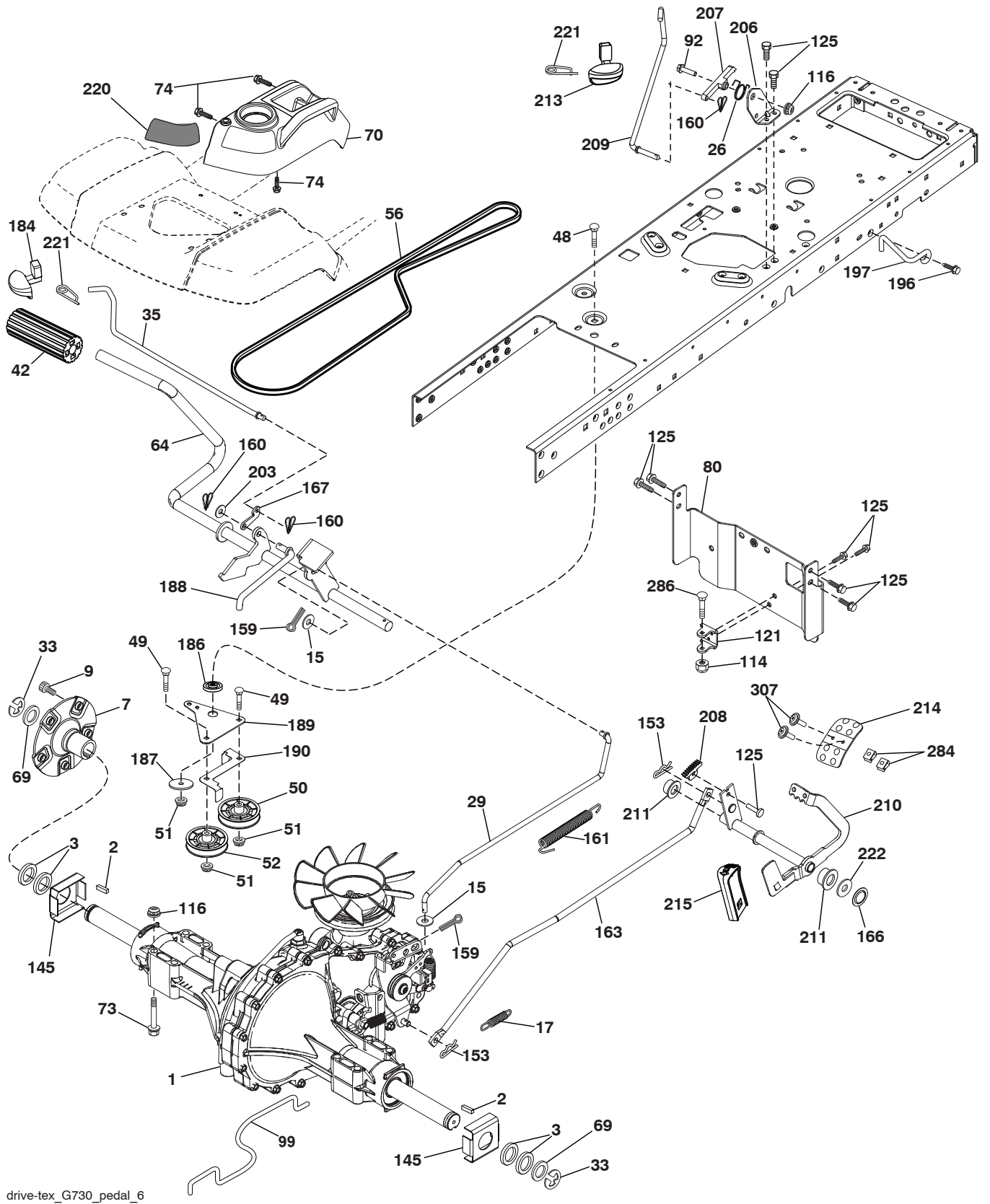
**TRACTOR - MODEL NO. GTH24V52LS (96043013500), PRODUCT NO. 960 43 01-35  
CHASSIS**

| KEY NO. | PART NO.     | DESCRIPTION                   |
|---------|--------------|-------------------------------|
| 2       | 532 19 42-61 | Drawbar                       |
| 3       | 532 43 97-52 | Applique                      |
| 5       | 532 43 74-70 | Dash                          |
| 14      | 532 44 11-77 | Hood                          |
| 15      | 532 43 97-33 | Lens LH                       |
| 18      | 532 43 77-62 | Grille Asm                    |
| 25      | 532 44 33-85 | Lens RH                       |
| 36      | 817 06 05-12 | Screw 5/16-18 x 3/4           |
| 37      | 532 44 12-08 | Fender                        |
| 58      | 532 19 43-14 | Bracket Fender                |
| 68      | 817 49 05-08 | Screw 5/16-18 x 1/2           |
| 130     | 532 41 63-58 | Screw #10 x 0.750 BOS Thread  |
| 137     | 532 40 75-90 | Bumper Dash                   |
| 150     | 532 43 97-74 | Duct Air                      |
| 151     | 532 43 66-70 | Bracket Pivot Hood            |
| 152     | 532 43 98-70 | Shield Browning/Debris        |
| 159     | 817 00 06-12 | Screw 3/8-16 x 3/4            |
| 161     | 532 43 99-29 | Console Fuel Window           |
| 162     | 532 14 24-32 | Screw Hex Wsh Hi-Lo 1/4 x 1/2 |
| 165     | 532 19 43-30 | Bracket Support Tank          |
| 175     | 532 19 63-04 | Crossmember                   |
| 176     | 532 40 07-76 | Screw 10-24 x 5/8 Wshd Qdrx   |
| 177     | 532 19 52-27 | Bushing Steering              |
| 178     | 532 19 97-82 | Cargo Asm. Net                |
| 180     | 532 19 42-60 | Chassis                       |
| 182     | 532 40 68-59 | Dash Lower                    |
| 183     | 874 52 05-20 | Bolt 5/16-18 x 1-1/4          |
| 189     | 817 00 05-12 | Screw 5/16-18 x 3/4           |
| 191     | 532 43 74-55 | Insert Reflective RH          |
| 194     | 873 90 05-00 | Nut Lock Hex Flange 5/16-18   |
| 196     | 532 43 96-74 | Console Asm. Deck Lift        |

| KEY NO. | PART NO.     | DESCRIPTION                 |
|---------|--------------|-----------------------------|
| 199     | 532 19 82-59 | Plate Deck Lift             |
| 202     | 532 43 97-28 | Vent Side Hood RH           |
| 203     | 532 43 97-27 | Vent Side Hood LH           |
| 204     | 532 43 57-14 | Vent Asm Hood Top           |
| 205     | 532 43 97-30 | Skirt Hood Side RH          |
| 206     | 532 43 97-29 | Skirt Hood Side LH          |
| 207     | 532 43 97-34 | Bezel RH                    |
| 208     | 532 43 97-35 | Bezel LH                    |
| 214     | 532 19 91-45 | Clip Retainer               |
| 217     | 532 40 91-67 | Rod Pivot                   |
| 221     | 532 19 89-09 | Reflector LH                |
| 228     | 532 19 51-61 | Stud Fastener               |
| 234     | 532 40 47-42 | Bumper Hood                 |
| 235     | 532 40 61-29 | Spacer Fender               |
| 236     | 873 93 05-00 | Nut Center Lock 5/16-18 unc |
| 297     | 532 43 74-56 | Insert Reflective LH        |
| 335     | 532 43 98-47 | Cover RH                    |
| 336     | 532 44 53-09 | Cover LH                    |
| 337     | 532 43 81-37 | Clip                        |
| 346     | 532 12 64-71 | Clip Insulator              |
| - -     | 532 42 49-18 | Kit Guard Brush             |

**NOTE:** All component dimensions given in U.S. inches  
1 inch = 25.4 mm

**TRACTOR - MODEL NO. GTH24V52LS (96043013500), PRODUCT NO. 960 43 01-35 DRIVE**



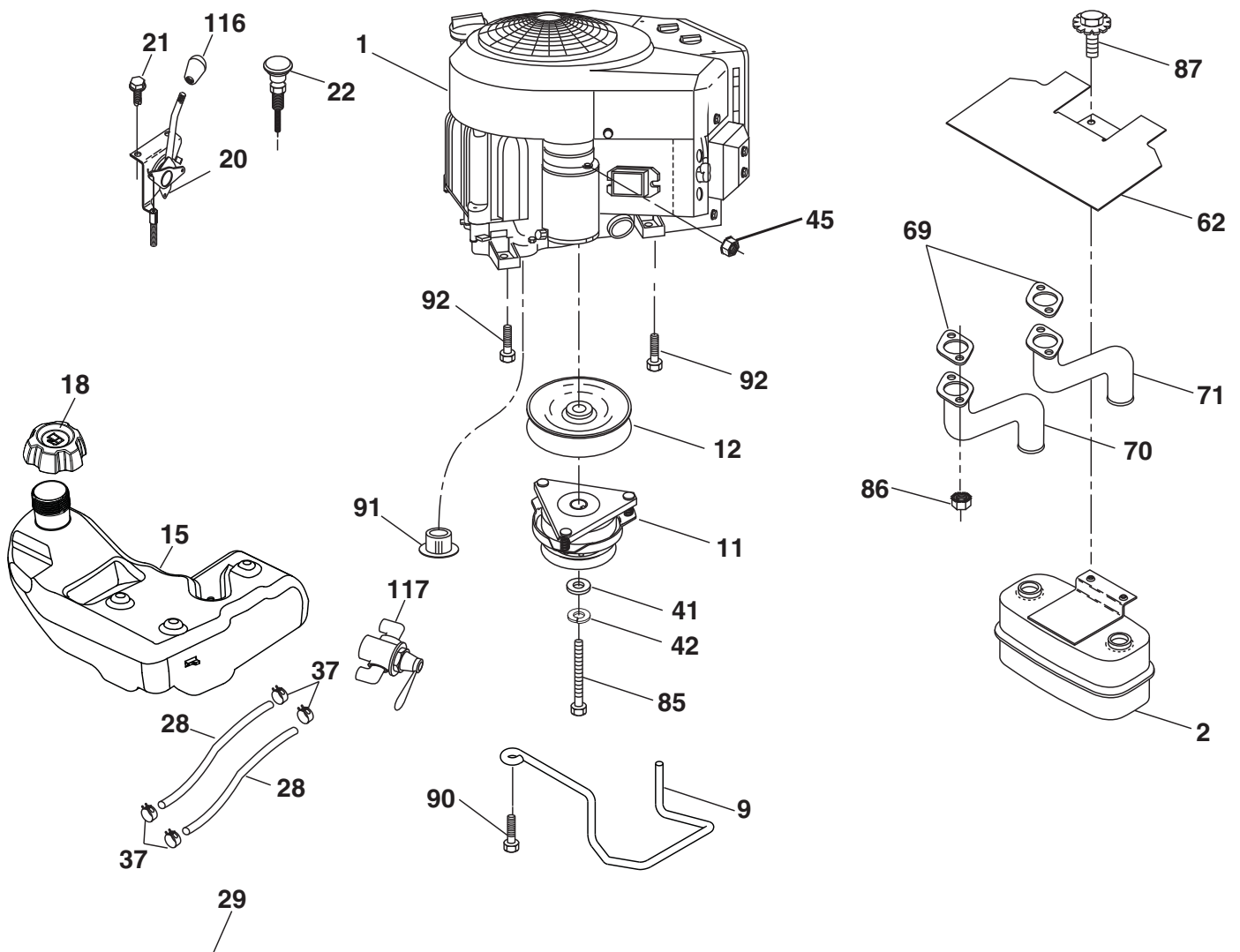
drive-tex\_G730\_pedal\_6

# TRACTOR - MODEL NO. GTH24V52LS (96043013500), PRODUCT NO. 960 43 01-35 DRIVE

| KEY NO. | PART NO.     | DESCRIPTION  | KEY NO. | PART NO.     | DESCRIPTION                   |
|---------|--------------|--|---------|--------------|-------------------------------|
| 1       | ---          | Transaxle, Hydro<br>G7-BCBB-1XDC-1FCA (420331)<br>(Order parts from transaxle manufacturer.) | 153     | 532 12 47-88 | Retainer Spring               |
| 2       | 532 00 70-70 | Key 1/4 x 2.5  | 159     | 876 02 04-12 | Pin Cotter 1/8 x 3/4          |
| 3       | 532 00 75-63 | Washer Thrust Axle Hardened  | 160     | 532 16 94-84 | Retainer Clip                 |
| 7       | 532 19 98-37 | Hub Asm. Wheel   | 161     | 532 10 57-09 | Spring, Return, Clutch        |
| 9       | 532 14 00-80 | Bolt Hub Wheel   | 163     | 532 41 81-85 | Rod Pedal Control             |
| 15      | 819 13 13-16 | Washer 13/32 x 13/16 x 16 Ga.  | 166     | 532 42 91-64 | Nut Push .625                 |
| 17      | 532 19 72-96 | Spring, Brake  | 167     | 532 40 52-57 | Latch Brake Parking           |
| 26      | 532 19 96-79 | Spring Return Cruise   | 184     | 532 44 14-55 | Handle Parking Brake          |
| 29      | 532 41 81-86 | Rod, Brake   | 186     | 532 19 43-21 | Spacer Retainer               |
| 33      | 812 00 00-53 | Ring E   | 187     | 819 13 32-10 | Washer                        |
| 35      | 532 43 54-86 | Rod, Brake, Park   | 188     | 532 19 43-23 | Link Clutch Ground Drive      |
| 42      | 532 12 48-72 | Cover, Foot Pedal  | 189     | 532 40 75-04 | Bellcrank Ground Drive        |
| 48      | 872 11 06-12 | Bolt Carr Sh 3/8-16 x 1-1/2 Gr.5   | 190     | 532 40 75-05 | Keeper Bellcrank Ground Drive |
| 49      | 872 11 06-14 | Bolt   | 196     | 817 00 06-16 | Screw 3/8-16 x 1              |
| 50      | 532 19 43-27 | Pulley Idler Flat  | 197     | 532 19 97-69 | Bracket Clutch Anti-Rotation  |
| 51      | 873 90 06-00 | Lock Nut 3/8-16  | 203     | 819 11 11-16 | Washer 11/32 x 11/16 x 16 Ga. |
| 52      | 532 19 43-26 | Idler V-Groove Offset  | 206     | 532 19 78-67 | Bracket Mount Latch Cruise    |
| 56      | 532 42 08-07 | V-Belt, Drive  | 207     | 532 19 78-68 | Latch Control Cruise          |
| 64      | 532 19 78-65 | Shaft Asm. Pedal Brake Control   | 208     | 532 19 78-69 | Gear Sector Control Cruise    |
| 69      | 532 12 38-00 | Washer 1-1/32 x 1-5/8 x 16 Ga.   | 209     | 532 19 95-92 | Rod Control Cruise            |
| 70      | 532 43 96-61 | Console Asm  | 210     | 532 19 78-60 | Rocker Asm. Pedal Control     |
| 73      | 874 49 05-48 | Bolt Hex 5/16-18 x 3 Gr. 5   | 211     | 532 12 01-83 | Bearing Nylon                 |
| 74      | 532 14 24-32 | Screw 1/4 x 1/2  | 213     | 532 40 31-19 | Knob Control Cruise           |
| 80      | 532 41 81-84 | Strap Torque   | 214     | 532 41 68-63 | Pedal Forward                 |
| 92      | 874 76 05-20 | Bolt 5/16-18 x 1/2   | 215     | 532 40 17-23 | Pedal Reverse                 |
| 99      | 532 41 81-88 | Spring Bypass  | 220     | 532 19 89-08 | Reflector RH                  |
| 114     | 873 80 05-00 | Nut Lock Hex W/Ins. 5/16-18 unc  | 221     | 532 40 31-87 | Retainer Spring Clip Handle   |
| 116     | 873 90 05-00 | Nut Lock Hex Flange 5/16-18  | 222     | 879 21 20-10 | Washer 21/32 x 1-1/4 x 10 Ga. |
| 121     | 532 17 56-11 | Bracket Strap Torque   | 284     | 532 41 76-93 | Nut U-Chnl. 1/4-20            |
| 125     | 817 00 05-12 | Screw 5/16-18 x 3/4  | 286     | 872 01 05-20 | Bolt 5/16-18 x 2.50           |
| 145     | 532 16 31-68 | Washer Axle Flange   | 307     | 874 18 04-12 | Screw Mach 1/4-20 x 3/4       |

**NOTE:** All component dimensions given in U.S. inches  
1 inch = 25.4 mm

**TRACTOR - MODEL NO. GTH24V52LS (96043013500), PRODUCT NO. 960 43 01-35  
ENGINE**



**SPARK ARRESTER KIT**

engine-tex\_Kawa-2cyl\_9



**TRACTOR - MODEL NO. GTH24V52LS (96043013500), PRODUCT NO. 960 43 01-35  
ENGINE**

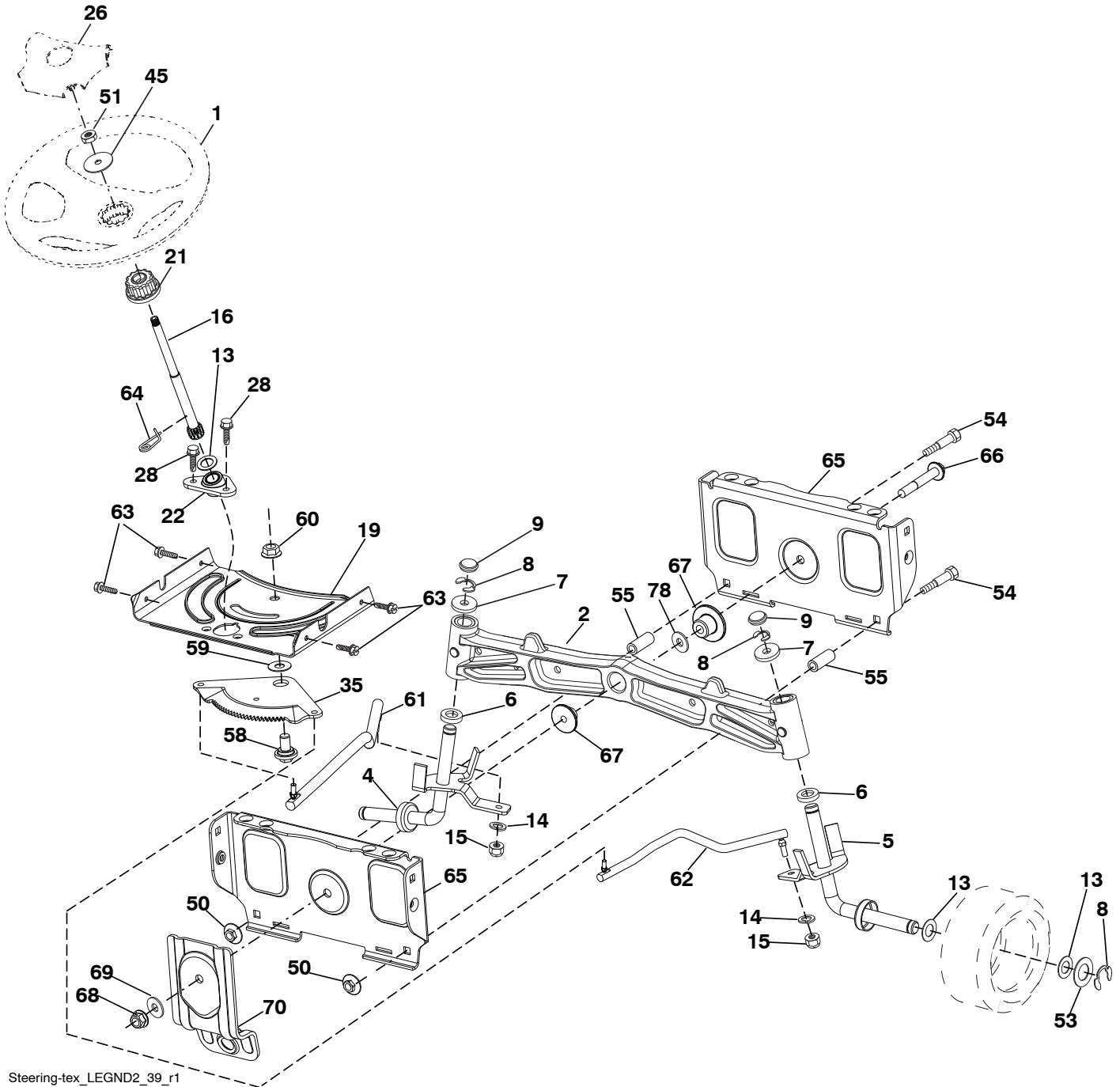
| <b>KEY NO.</b> | <b>PART NO.</b> | <b>DESCRIPTION</b>  |
|----------------|-----------------|---|
| 1              | -- -- -- --     | Engine KAWA Model No. FR730V-DS04 (445363)(Order parts from engine manufacturer.) |
| 2              | 532 14 97-23    | Muffler   |
| 9              | 532 40 86-67    | Keeper Asm. Belt Engine   |
| 11             | 532 17 93-35    | Clutch Electric   |
| 12             | 532 19 43-43    | Pulley Engine   |
| 15             | 532 42 29-48    | Tank Fuel   |
| 18             | 532 43 92-08    | Cap Asm   |
| 20             | 532 42 43-41    | Control Throttle  |
| 21             | 532 41 63-58    | Screw #10 x 0.750 BOS Thread  |
| 22             | 532 19 15-96    | Control Choke   |
| 28             | 532 40 11-35    | Fuel Line   |
| 29             | 532 13 71-80    | Spark Arrester Kit  |
| 37             | 532 12 34-87    | Clamp Hose  |
| 41             | 532 12 61-97    | Washer 1-1/2 OD x 15/32 ID x .250   |
| 42             | 810 04 07-00    | Washer Lock 7/16  |
| 45             | 873 51 04-00    | Nut Keps Hex 1/4-20 unc   |
| 62             | 532 43 40-17    | Shield Heat Muffler   |
| 69             | 532 17 81-51    | Gasket  |
| 70             | 532 42 47-65    | Tube Exhaust LH   |
| 71             | 532 42 47-66    | Tube Exhaust RH   |
| 85             | 532 17 99-53    | Bolt 7/16-20 x 3.75 Gr. 5   |
| 86             | 532 18 43-62    | Nut Hex M8-1.25   |
| 87             | 532 19 82-39    | Bolt 5/16-18 unc x 1 w/Sems   |
| 90             | 817 00 06-16    | Screw 3/8-16 x 1  |
| 91             | 532 18 74-95    | Bushing   |
| 92             | 817 12 06-16    | Screw 3/8-16 x 1  |
| 116            | 539 13 26-24    | Knob Soft Touch   |
| 117            | 532 42 08-28    | Valve Fuel Reserve  |

**NOTE:** All component dimensions given in U.S. inches  
1 inch = 25.4 mm

For engine service and replacement parts, call the toll free number for your engine manufacturer listed below:

Kawasaki 1-949-460-5688

**TRACTOR - MODEL NO. GTH24V52LS (96043013500), PRODUCT NO. 960 43 01-35**  
**STEERING ASSEMBLY**



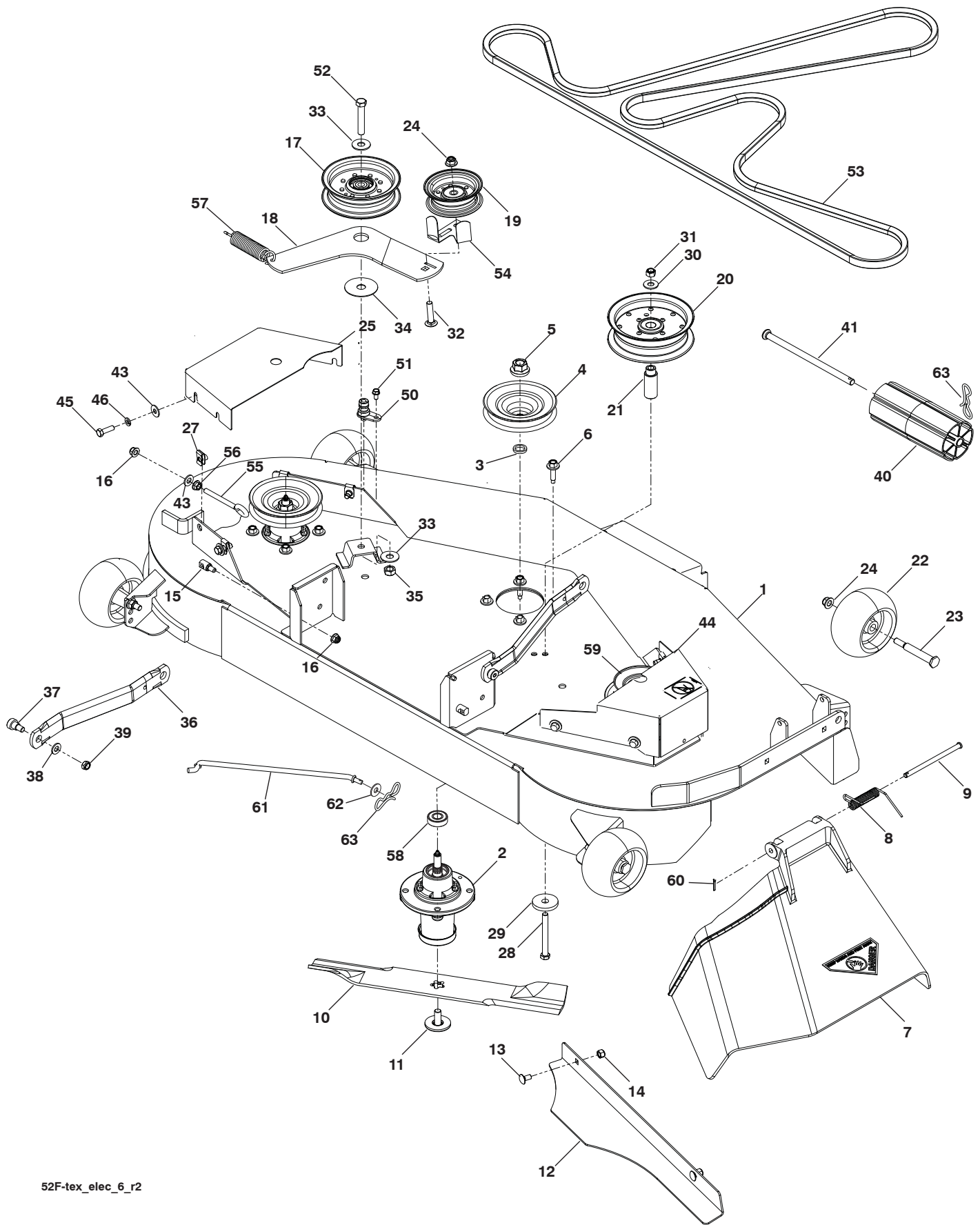
Steering-tex\_LEGND2\_39\_r1

**TRACTOR - MODEL NO. GTH24V52LS (96043013500), PRODUCT NO. 960 43 01-35  
STEERING ASSEMBLY**

| <b>KEY<br/>NO.</b> | <b>PART<br/>NO.</b> | <b>DESCRIPTION</b>              |
|--------------------|---------------------|---------------------------------|
| 1                  | 532 43 97-40        | Wheel, Steering                 |
| 2                  | 532 19 59-68        | Axle Asm., Front                |
| 4                  | 532 40 30-89        | Spindle Asm. LH                 |
| 5                  | 532 40 30-90        | Spindle Asm. RH                 |
| 6                  | 532 12 49-31        | Bearing, Race Thrust Harden     |
| 7                  | 532 12 17-48        | Washer 25/32 x 1-5/8 x 16 Ga.   |
| 8                  | 812 00 00-29        | Ring, Clip #T5304-75            |
| 9                  | 532 12 12-32        | Cap, Spindle                    |
| 13                 | 532 12 17-49        | Washer 25/32 x 1-1/4 x 16 Ga.   |
| 14                 | 810 04 06-00        | Washer, Lock Hvy Hlcl Spr 3/8   |
| 15                 | 873 54 06-00        | Nut, Crown Lock 3/8-24 unf      |
| 16                 | 532 40 82-19        | Shaft Steering                  |
| 19                 | 532 19 47-29        | Plate Steering                  |
| 21                 | 532 18 67-37        | Adapter, Wheel Steering         |
| 22                 | 532 42 05-37        | Steering Support Lower          |
| 26                 | 532 43 97-43        | Insert, Wheel Steering          |
| 28                 | 817 00 06-12        | Screw 3/8-16 x 3/4              |
| 35                 | 532 19 47-32        | Gear, Sector Plate              |
| 45                 | 819 18 38-12        | Washer 9/16 x 2-3/8 x 12 Ga.    |
| 50                 | 873 90 06-00        | Nut Lock Flange 3/8-16 unc      |
| 51                 | 873 94 08-00        | Nut Hex Jam Toplock 1/2-20 unf  |
| 53                 | 532 18 89-67        | Washer Hardened .793x1.637x.060 |
| 54                 | 874 76 06-36        | Bolt Hex 3/8-16 unc x 2-1/4     |
| 55                 | 532 41 47-36        | Bolt Hex 3/8-16 unc x 2-1/4     |
| 58                 | 532 19 47-47        | Bolt Shoulder Sector Pivot CFM  |
| 59                 | 532 19 47-48        | Washer Thrust Sector Steering   |
| 60                 | 873 97 10-00        | Nut Flange Lock 5/8-11          |
| 61                 | 532 19 47-40        | Draglink, LH                    |
| 62                 | 532 19 47-41        | Draglink, RH                    |
| 63                 | 817 00 05-12        | Screw 5/16-18 x 3/4             |
| 64                 | 532 19 98-49        | Retainer Clip Spring Steering   |
| 65                 | 532 19 47-34        | Brace Axle Front                |
| 66                 | 871 02 07-48        | Bolt Hex Fghd 7/16-14 x 3 Serr  |
| 67                 | 532 19 47-37        | Bushing PM Front Axle           |
| 68                 | 873 90 07-00        | Nut Lock Flange 7/16-14 Gr. 5   |
| 69                 | 532 19 91-62        | Washer 1.5 x .505 x .118        |
| 70                 | 532 19 61-97        | Bracket Deck Susp. Front        |
| 78                 | 532 05 70-79        | Washer Thrust                   |

**NOTE:** All component dimensions given in U.S. inches  
1 inch = 25.4 mm

# TRACTOR - MODEL NO. GTH24V52LS (96043013500), PRODUCT NO. 960 43 01-35 MOWER DECK



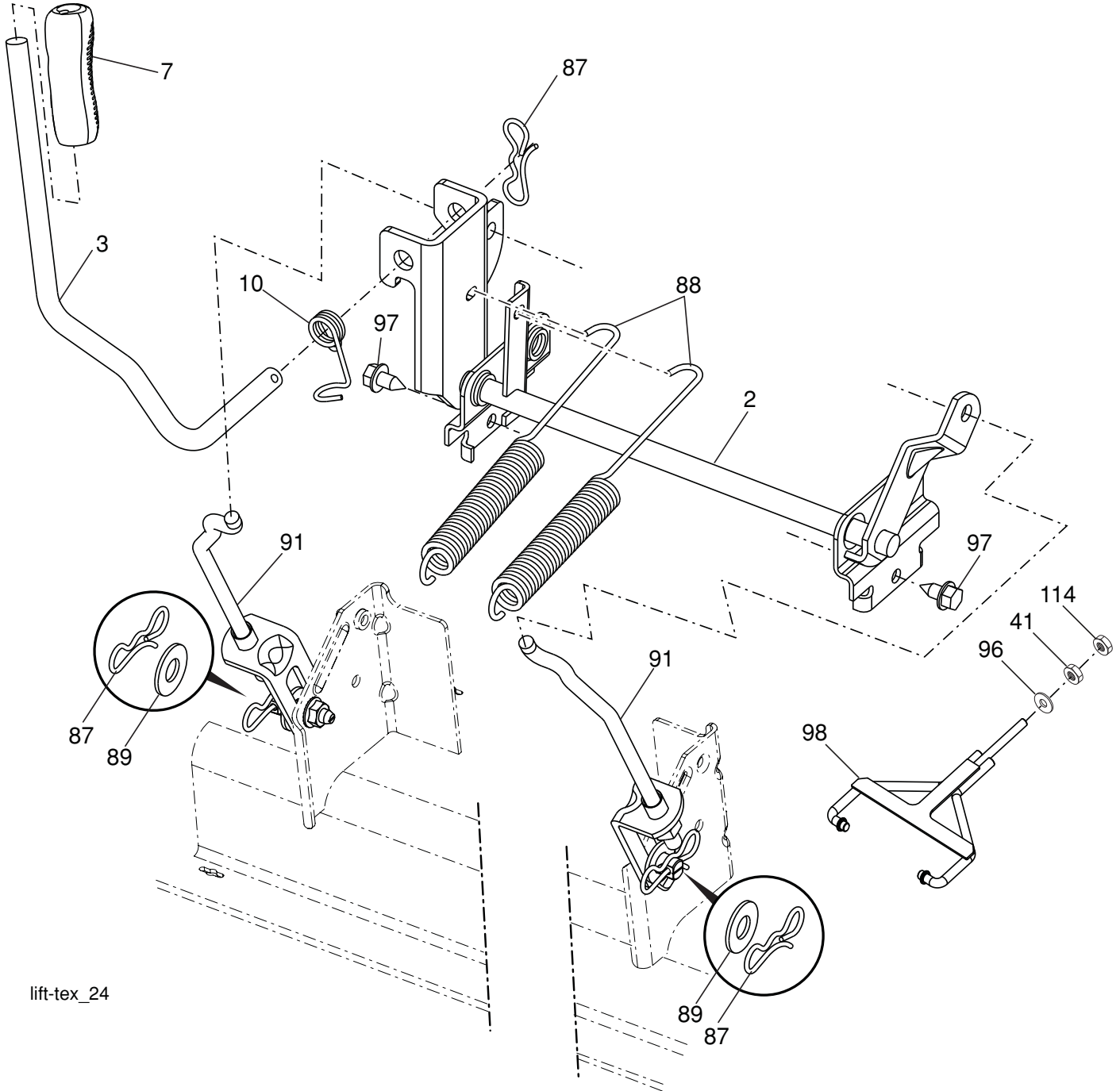
52F-tex\_elec\_6\_r2

**TRACTOR - MODEL NO. GTH24V52LS (96043013500), PRODUCT NO. 960 43 01-35  
MOWER DECK**

| KEY NO. | PART NO.     | DESCRIPTION                  | KEY NO. | PART NO.     | DESCRIPTION                   |
|---------|--------------|------------------------------|---------|--------------|-------------------------------|
| 1       | 532 44 53-60 | Deck                         | 36      | 532 19 51-85 | Arm, Susp., Rear              |
| 2       | 539 11 21-70 | Housing Assembly             | 37      | 539 11 36-21 | Sb 3/8-16 x 3/8 Skt Hd        |
| 3       | 539 18 76-90 | Washer-Spacer                | 38      | 539 99 01-22 | Washer, 3/8 Sae Flt           |
| 4       | 532 10 75-21 | Pulley, Mandrel              | 39      | 539 20 02-82 | Nut, 3/8-16 Hex Jam Nyloc     |
| 5       | 539 40 02-34 | Nut, 9/16 Top Center Lock    | 40      | 532 17 60-66 | Roller Nose                   |
| 6       | 539 10 76-30 | Screw, Washer Head           | 41      | 532 17 91-27 | Rod Roller Nose               |
| 7       | 539 11 07-33 | Discharge Chute              | 43      | 539 99 06-92 | Washer, 5/16 Std Flt          |
| 8       | 539 11 07-35 | Spring - Torsion             | 44      | 575 32 00-02 | Shield, Belt RH               |
| 9       | 539 11 07-36 | Pin, Clevis 5/16 x 5.19      | 45      | 539 99 02-09 | Hcs 5/16-18 x 1 Gr 5          |
| 10      | 574 87 08-01 | Blade, 16-1/4"               | 46      | 539 99 01-87 | Wash 5/16 Slw                 |
| 11      | 539 10 75-22 | Bolt, 7/16, Assy Blade       | 50      | 532 41 55-98 | Washout Port                  |
| 12      | 574 87 50-02 | Confinement Plate            | 51      | 539 10 84-61 | Bolt, 1/4-20 x 1/2            |
| 13      | 539 99 07-99 | Rhsnb 5/16-18 x 5/8 Gr 5     | 52      | 539 10 48-70 | Hcs 7/16-14 x 2-1/2 Gr 5      |
| 14      | 539 99 07-17 | Nut 5/16-18 Hex Nyloc        | 53      | 574 84 56-03 | Belt, Deck                    |
| 15      | 532 19 51-61 | Stud, Fasten w/ Anti- Rotate | 54      | 575 22 43-01 | Guard, Belt                   |
| 16      | 539 11 28-99 | Nut 5/16-18 Hex Flange Nyloc | 55      | 539 11 55-74 | Eyebolt 5/16 x 3-1/2          |
| 17      | 532 19 61-04 | Pulley, Idler Spec. Hub      | 56      | 539 99 05-85 | Nut 5/16-18 Hex Whizlk        |
| 18      | 574 84 18-02 | Arm, Idler, Blk              | 57      | 539 10 68-50 | Spring                        |
| 19      | 532 17 79-68 | Pulley, Idler                | 58      | 539 11 20-50 | Ball Bearing                  |
| 20      | 539 13 27-28 | Pulley, Idler                | 59      | 575 35 29-01 | Pulley                        |
| 21      | 575 22 45-01 | Idler Bushing                | 60      | 532 16 94-84 | Clip Retainer                 |
| 22      | 539 10 76-10 | Wheel, Gauge                 | 61      | 532 40 48-51 | Rod Anti-Sway                 |
| 23      | 532 19 34-06 | Bolt, Shoulder               | 62      | 819 13 13-12 | Washer 13/32 x 13/16 x 12 Ga. |
| 24      | 521 99 65-01 | Nut 3/8-16 Hex Flg Nyloc     | 63      | 532 19 42-08 | Pin Cotter 5/16 Bow Tie Lock  |
| 25      | 575 22 47-02 | Shield, Belt LH              | --      | 532 44 53-61 | Mower Deck Complete           |
| 27      | 539 10 47-63 | Retainer 5/16c U Type        |         |              |                               |
| 28      | 539 10 82-71 | Hcs 3/8-16 x 3-1/2 Gr 5      |         |              |                               |
| 29      | 539 10 65-04 | Heavy Washer                 |         |              |                               |
| 30      | 539 99 05-17 | Washer, 3/8 Flat Std         |         |              |                               |
| 31      | 539 97 69-79 | Nut 3/8-16 Hex Nyloc         |         |              |                               |
| 32      | 539 99 09-23 | Rhsnb 3/8-16 x 1-3/4 Gr 5    |         |              |                               |
| 33      | 539 10 48-64 | Washer, 7/16 Flat            |         |              |                               |
| 34      | 532 17 85-15 | Washer, Flat Hardened        |         |              |                               |
| 35      | 539 11 91-24 | Nut, 7/16-14 Hex Nyloc       |         |              |                               |

**NOTE:** All component dimensions given in U.S. inches  
1 inch = 25.4 mm

**TRACTOR - MODEL NO. GTH24V52LS (96043013500), PRODUCT NO. 960 43 01-35  
MOWER LIFT**



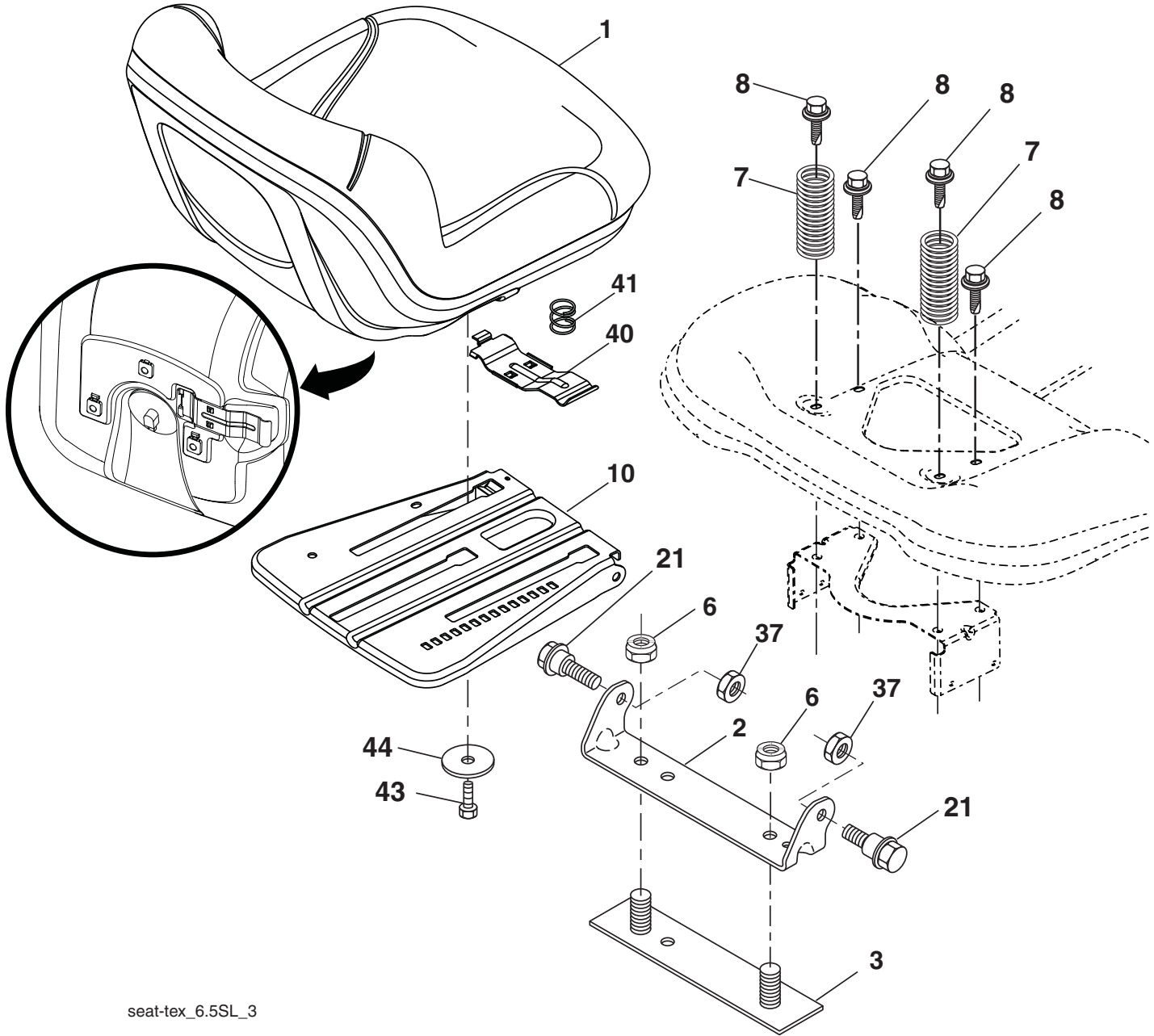
lift-tex\_24

| KEY NO. | PART NO.     | DESCRIPTION                  |
|---------|--------------|------------------------------|
| 2       | 532 42 20-27 | Shaft Asm., Lift             |
| 3       | 532 19 52-30 | Lever Asm., Lift RH          |
| 7       | 532 41 17-42 | Grip, Lever                  |
| 10      | 532 19 63-14 | Spring Torsion               |
| 41      | 532 17 59-94 | Nut Lift Link                |
| 87      | 532 19 42-09 | Pin Cotter 7/16 Bow Tie Lock |
| 88      | 532 19 53-04 | Spring Lift Assist           |
| 89      | 819 19 19-12 | Washer Clear Zinc            |

| KEY NO. | PART NO.     | DESCRIPTION                 |
|---------|--------------|-----------------------------|
| 91      | 532 40 34-07 | Link Lift Susp Mower Rear   |
| 96      | 532 19 52-63 | Bushing Spherical           |
| 97      | 817 00 06-12 | Screw 3/8-16 x .75          |
| 98      | 574 82 25-01 | Link Lift Susp. Front Mower |
| 114     | 873 36 07-00 | Nut Jam 7/16-20             |

**NOTE:** All component dimensions given in U.S. inches  
1 inch = 25.4 mm

**TRACTOR - MODEL NO. GTH24V52LS (96043013500), PRODUCT NO. 960 43 01-35  
SEAT ASSEMBLY**



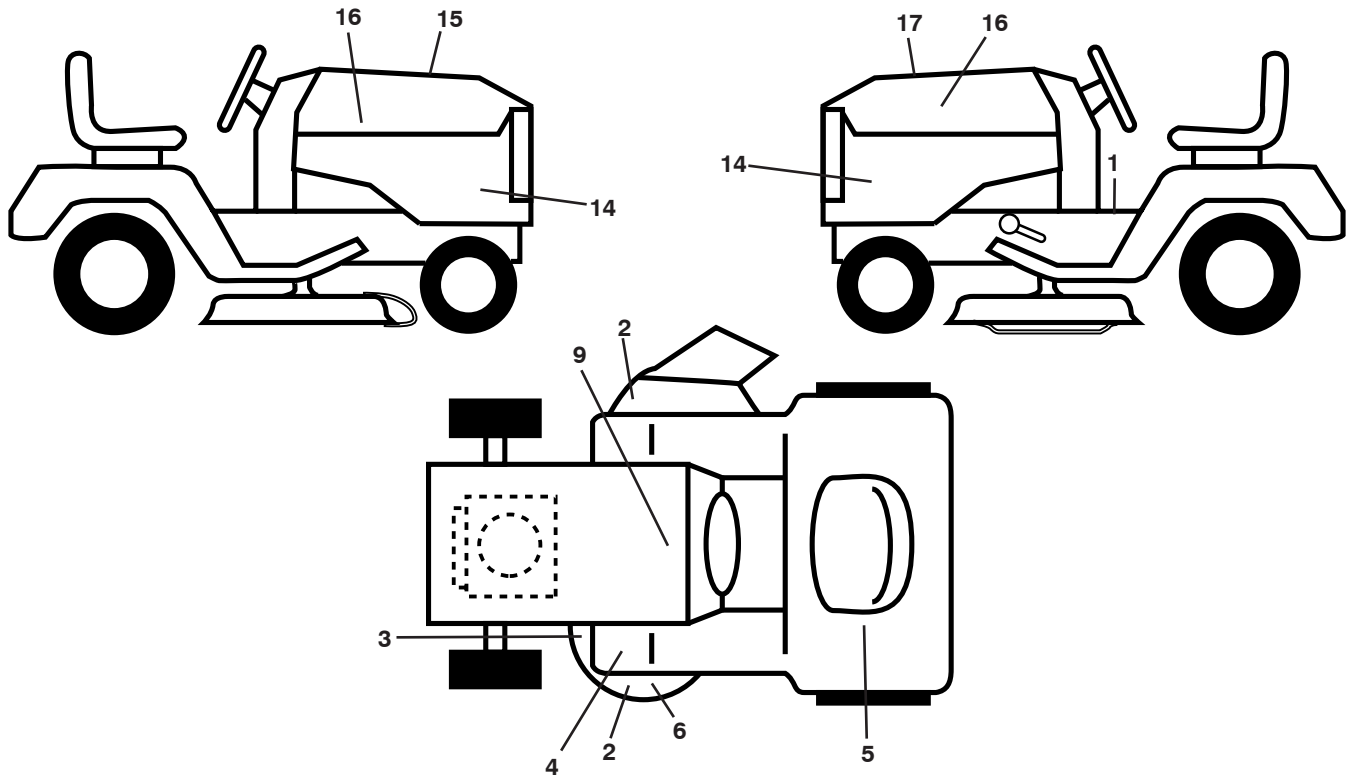
seat-tex\_6.5SL\_3

| KEY NO. | PART NO.     | DESCRIPTION                   |
|---------|--------------|-------------------------------|
| 1       | 532 44 32-63 | Seat                          |
| 2       | 532 18 01-66 | Bracket Pivot Fender          |
| 3       | 532 14 06-75 | Strap, Asm Fender             |
| 6       | 873 80 06-00 | Nut, Lock w/Ins. 3/8-16 unc   |
| 7       | 532 12 41-81 | Spring, Seat Cprsn            |
| 8       | 532 17 18-77 | Bolt 5/16-18 unc x 3/4 w/Sems |
| 10      | 532 19 69-77 | Pan, Seat                     |
| 21      | 532 17 18-52 | Bolt, Shoulder 5/16-18        |

| KEY NO. | PART NO.     | DESCRIPTION                   |
|---------|--------------|-------------------------------|
| 37      | 873 80 05-00 | Nut, Lock 5/16-18 unc         |
| 40      | 532 43 98-71 | Handle Slide Seat             |
| 41      | 532 19 82-00 | Spring Latch Seat             |
| 43      | 874 76 06-12 | Bolt Fin Hex 3/8-16 unc x 3/4 |
| 44      | 819 13 38-12 | Washer 13/32 x 2-3/8 x 12 Ga. |

**NOTE:** All component dimensions given in U.S. inches  
1 inch = 25.4 mm

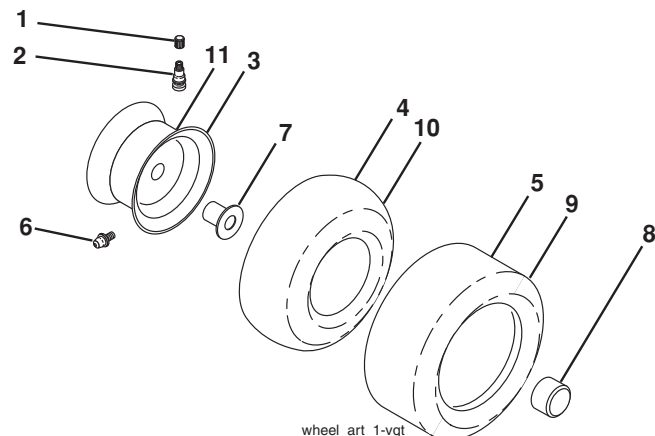
**TRACTOR - MODEL NO. GTH24V52LS (96043013500), PRODUCT NO. 960 43 01-35  
DECALS**



| KEY NO. | PART NO.     | DESCRIPTION             |
|---------|--------------|-------------------------|
| 1       | 532 41 16-57 | Decal, Operator's       |
| 2       | 539 10 57-43 | Decal, No Step          |
| 3       | 532 19 87-85 | Decal, Mower Sch.       |
| 4       | 532 41 86-00 | Decal, Pedal            |
| 5       | 532 42 62-09 | Decal, Warning Reserve  |
| 6       | 539 11 32-24 | Decal, Warning          |
| 9       | 532 14 50-05 | Decal, Battery Dnge/Poi |
| 14      | 532 44 56-44 | Decal, Panel Side       |

| KEY NO. | PART NO.     | DESCRIPTION                   |
|---------|--------------|-------------------------------|
| 15      | 532 42 38-29 | Decal, Cust. Resp.            |
| 16      | 532 42 91-96 | Decal, Hood Logo              |
| 17      | 532 44 54-99 | Decal, Replacement            |
| --      | 532 16 69-60 | Decal, Bypass                 |
| --      | 532 43 98-82 | Pad, Footrest, LH             |
| --      | 532 43 98-81 | Pad, Footrest, RH             |
| --      | 532 44 56-41 | Manual, Operator's (Eng/Span) |
| --      | 532 44 56-42 | Manual, Part's (Eng/Span)     |

**WHEELS AND TIRES**



| KEY NO. | PART NO.     | DESCRIPTION                        |
|---------|--------------|------------------------------------|
| 1       | 532 05 91-92 | Cap, Valve, Tire                   |
| 2       | 532 06 51-39 | Stem, Valve                        |
| 3       | 532 18 18-39 | Rim Assembly, Front                |
| 4       | 532 00 81-34 | Tube, Front (Service Item Only)    |
| 5       | 532 16 10-24 | Tire, Front                        |
| 6       | 532 12 49-57 | Fitting, Grease (Front Wheel Only) |
| 7       | 532 12 49-59 | Bearing, Flange (Front Wheel Only) |
| 8       | 532 17 50-39 | Cap, Axle (Front Wheel Only)       |
| 9       | 532 17 04-53 | Tire, Rear                         |
| 10      | 532 00 71-54 | Tube, Rear (Service Item Only)     |
| 11      | 532 12 50-70 | Rim Assembly, Rear                 |
| --      | 532 14 43-34 | Sealant, Tire (10 oz. Tube)        |

**NOTE:** All component dimensions given in U.S. inches  
1 inch = 25.4 mm