



**BOSCH**

# Circular saw

GKT18V-20GC | 3 601 FB4 010

---

## Table of Content

Spare parts list.....	2
Illustration - Type.....	5

## Spare parts list

Item	Part Number	Description	Illustration
1/1	1 605 806 64R	Handle	1
1/10	2 602 026 201	Selector Switch	1
1/11	2 602 123 010	Rocker	1
1/12	2 603 101 070	Locking pin	1
1/17	2 607 202 386	Switch	1
1/54	1 600 210 094	O-Ring	1
1/55	1 600 A01 UT1	Shim Plate	1
1/60	1 600 A01 9DG	Compression Spring	1
1/61	2 604 618 015	Compression Spring	1
1/64	2 604 618 014	Compression Spring	1
1/66	2 603 490 022	Screw 4x16	1
1/67	2 603 490 024	Torx Oval-Head Screw 4x25	1
1/7	2 602 026 200	Locking Slide	1
1/9	2 602 051 004	Locking Lever	1
3	1 607 233 5F7	Electronic Module	1
4	1 605 132 182	Housing Cover	1
5	1 605 132 181	Housing Base	1
6	1 600 A01 5X0	Support	1
13	1 600 A01 5F8	Data cable	1
14	1 600 A01 3D8	Connecting Cable	1
15	1 600 A01 3D5	Connecting Cable	1
16	1 600 A02 4G7	Contact Plate	1
18	1 607 233 5GD	Electronic Module	1
19	1 600 A01 6CZ	Electronics Module	1
20	1 600 A01 6ML	Cover Panel	1
21	1 600 A00 M52	Rubber Sponge	1
22	1 600 A01 35N	cover	1
23/2	1 607 022 66Y	DC motor	1
23/23	1 605 806 64W	Gear Housing	1
23/26	1 600 A01 305	Rejection Slide	1
23/30	3 600 210 136	O-Ring 42,0x1,0 MM	1
23/31	1 600 A01 31C	Shim	1
23/31	1 600 A01 9L6	Shim	1
23/31	1 600 A01 9L7	Shim	1
23/31	1 600 A01 9L8	Shim	1

## Spare parts list

Item	Part Number	Description	Illustration
23/35	1 600 A02 13M	Jack Shaft	1
23/37	1 600 A02 13N	Output Shaft	1
23/70	1 619 X05 274	Screw	1
23/71	2 610 386 516	Torx Oval-Head Screw M4x12	1
29	1 600 A01 5MM	Shim	1
39	1 603 123 067	Bearing bolt	1
40	1 600 300 11H	Bushing	1
42	1 604 651 01C	Coiled Spring	1
62	1 609 280 477	Compression Spring	1
68	2 914 491 410	Thread-forming tap. Screw M4x16	1
69	2 603 410 051	Thread-forming tap. Screw	1
74	1 603 430 03T	Screw	1
78	2 916 660 033	Spring retaining ring	1
95	1 603 435 09S	Torx Oval-Head Screw	1
654	1 605 411 01V	Dust Bag	1
657	1 600 A02 630	Suction Pipe	1
808	1 601 11A 803	Nameplate	1
23/91	2 605 719 049	Clamping-Flange	2
23/92	2 605 719 051	Clamping-Flange	2
23/94	1 600 A01 H00	Socket head cap screw	2
33	1 600 A01 300	Guard Plate	2
34	2 605 510 323	Protection cover	2
41	2 605 730 067	Suction Socket	2
43	2 601 010 079	Damper	2
44	1 600 A01 L2F	Depth gauge	2
65	1 600 A01 8U8	Torsion Spring	2
72	2 603 410 048	Thread-forming tap. Screw M4x8	2
45	1 600 A01 2ZA	Base Plate	3
46	2 601 073 020	Cover	3
47	1 600 A01 8TN	Filling Piece	3
48	2 605 730 068	Carrier	3
49	1 600 A01 9N6	Angle Lever	3
50	2 610 387 875	Hex Nut	3
51	1 600 A01 2ZD	Carrier	3
52	2 601 010 082	Setting Device	3

**Spare parts list**

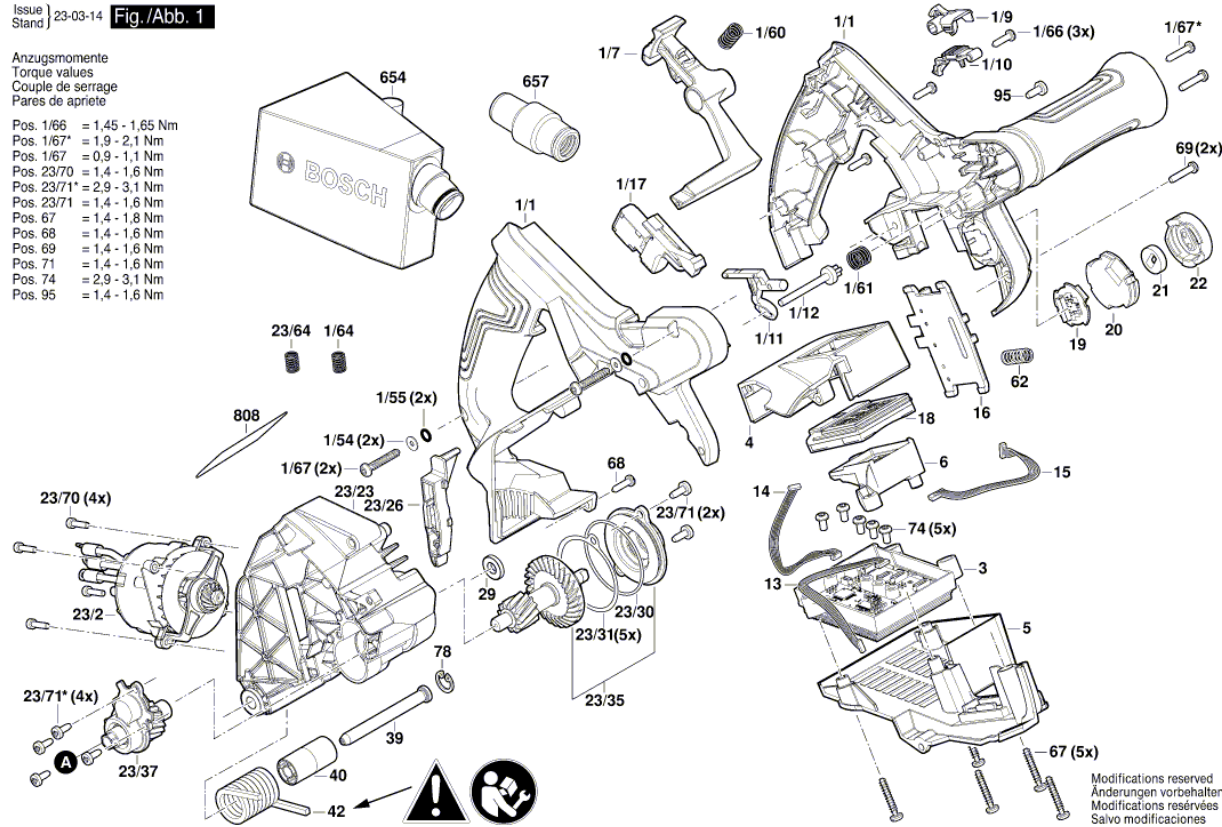
<b>Item</b>	<b>Part Number</b>	<b>Description</b>	<b>Illustration</b>
53	1 600 A01 2ZH	Setting Device	3
63	1 604 612 00R	Compression Spring	3
73	2 910 281 209	Round-Head Bolt     DIN 603-M6x40	3
79	2 916 011 892	Plain Washer     DIN 9021-B 4,3-ST	3
80	2 918 660 002	Washer	3
93	2 610 364 015	Hexagon Socket Screw Key     5 MM	3
852	2 607 226 325	Fast Charger     USA GAL 18V-160 C 120V	3
853	1 607 A35 0CH	Battery Pack     GBA18V80 8.0Ah ProCore SCM	3
853	1 607 A35 0CM	Battery Pack     USA GBA18V120	3

Illustration - Type - E

3 601 FB4 010  
 Issue | 23-03-14  
 Stand | Fig./Abb. 1

Anzugsmomente  
 Torque values  
 Couple de serrage  
 Paires de apriete

- Pos. 1/66 = 1,45 - 1,65 Nm
- Pos. 1/67\* = 1,9 - 2,1 Nm
- Pos. 1/67 = 0,9 - 1,1 Nm
- Pos. 23/70 = 1,4 - 1,6 Nm
- Pos. 23/71\* = 2,9 - 3,1 Nm
- Pos. 23/71 = 1,4 - 1,6 Nm
- Pos. 67 = 1,4 - 1,8 Nm
- Pos. 68 = 1,4 - 1,6 Nm
- Pos. 69 = 1,4 - 1,6 Nm
- Pos. 71 = 1,4 - 1,6 Nm
- Pos. 74 = 2,9 - 3,1 Nm
- Pos. 95 = 1,4 - 1,6 Nm



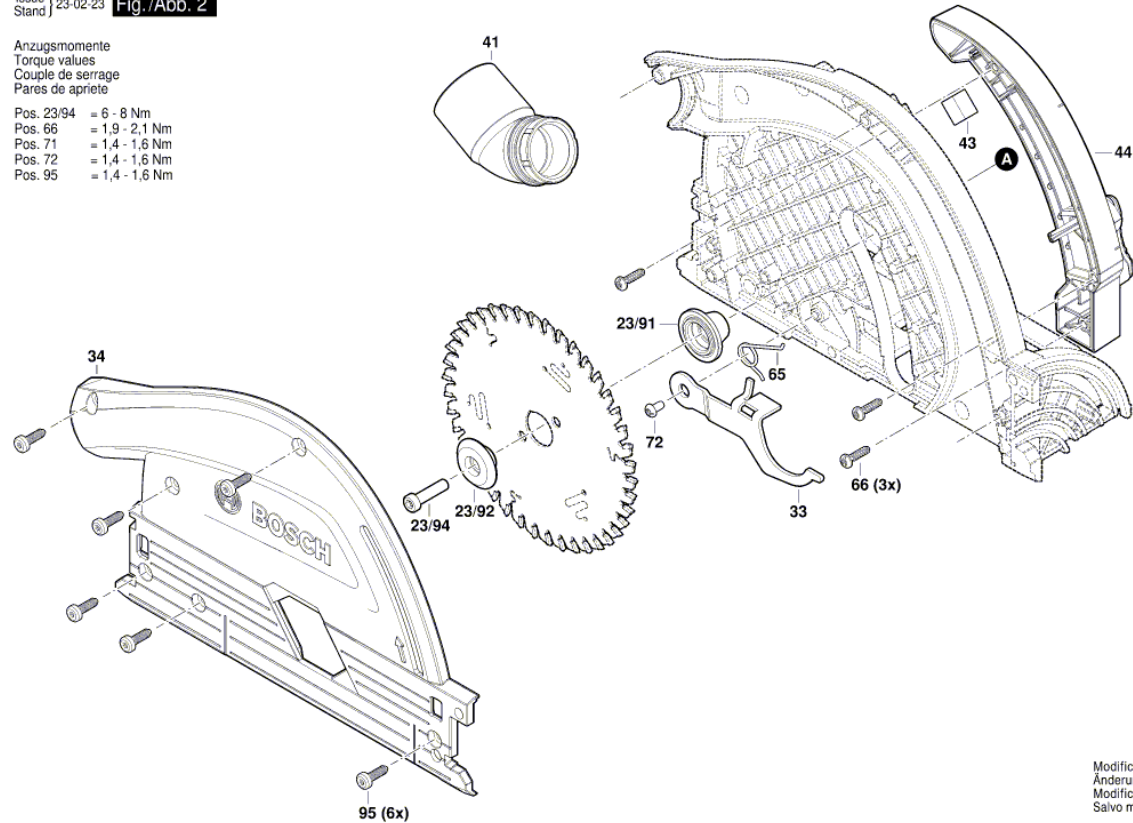
Modifications reserved  
 Änderungen vorbehalten  
 Modifications réservées  
 Salvo modificaciones

Illustration - Type - E

3 601 FB4 010  
 Issue | 23-02-23  
 Stand | Fig./Abb. 2

Anzugsmomente  
 Torque values  
 Couple de serrage  
 Pares de apriete

Pos. 23/94 = 6 - 8 Nm  
 Pos. 66 = 1,9 - 2,1 Nm  
 Pos. 71 = 1,4 - 1,6 Nm  
 Pos. 72 = 1,4 - 1,6 Nm  
 Pos. 95 = 1,4 - 1,6 Nm



Modifications reserved  
 Änderungen vorbehalten  
 Modifications réservées  
 Salvo modificaciones

Illustration - Type - E

3 601 FB4 010  
Issue | 23-02-23  
Stand |

Fig./Abb. 3

