



BOSCH

Circular saw

GKM 18V-20 | 3 601 FB8 010

Table of Content

Spare parts list.....	2
Illustration - Type.....	4

Circular saw | GKM 18V-20 | 3 601 FB8 010

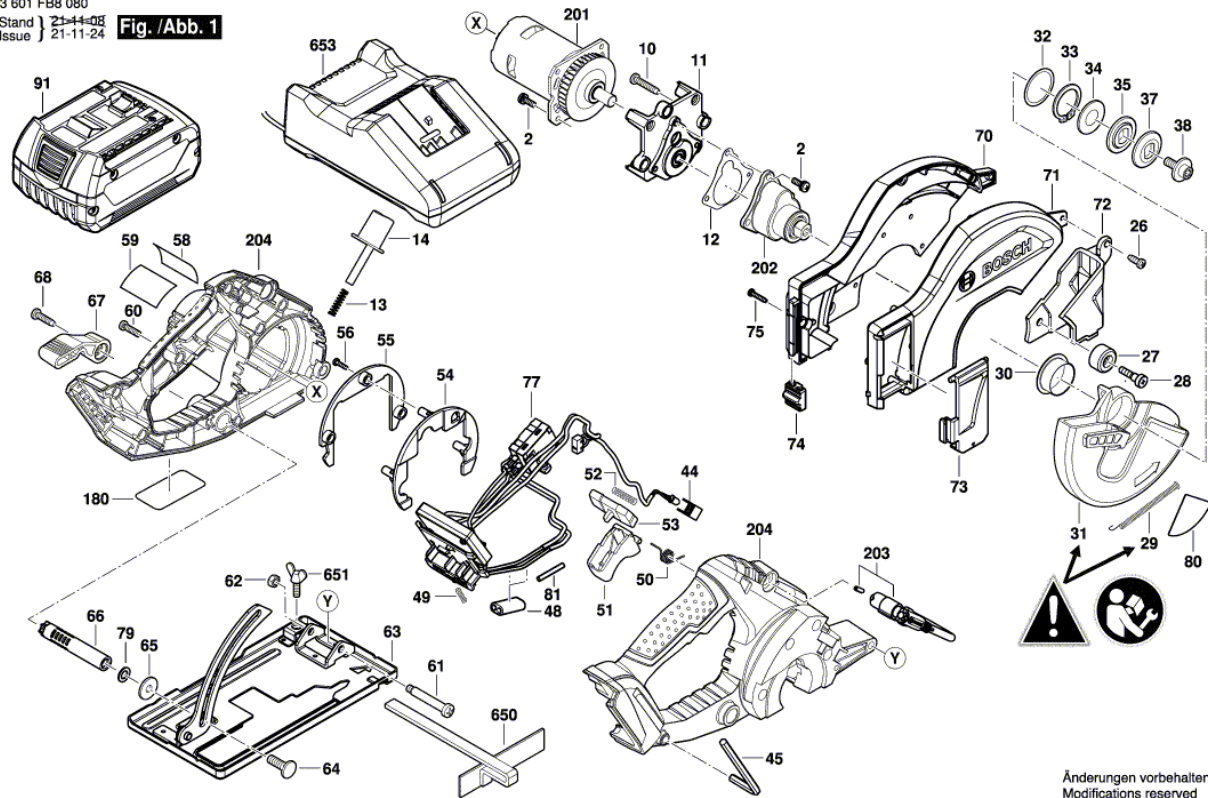
Spare parts list			
Item	Part Number	Description	Illustration
2	2 610 034 094	Screw	1
10	2 610 034 144	Screw	1
11	2 610 033 566	Bearing Housing	1
12	2 610 034 143	Gasket	1
13	2 610 034 157	Compression Spring	1
14	2 610 034 095	Knob	1
26	2 610 034 145	Screw	1
27	2 610 033 564	Bumper	1
28	2 610 034 140	Screw	1
29	2 610 031 712	Extension Spring	1
30	2 610 033 580	Bushing	1
31	2 610 033 559	Flap Guard	1
32	2 610 034 151	Plain Washer	1
33	2 610 034 153	Retaining ring	1
34	2 610 033 579	Seal	1
35	2 610 033 571	Intermediate Flange	1
37	2 610 033 572	Washer	1
38	2 610 033 581	Locking Bolt	1
44	2 610 034 142	Lens	1
45	2 610 034 161	Hexagon Socket Wrench	1
48	2 610 035 267	Ferrite	1
49	2 610 013 564	Compression Spring	1
50	2 610 034 103	Torsion Spring	1
51	2 610 033 560	Trigger	1
52	2 610 034 156	Compression Spring	1
53	2 610 033 561	Locking Lever	1
54	2 610 033 576	Baffle	1
55	2 610 033 577	Baffle	1
56	2 610 034 158	Screw	1
58	2 610 034 102	Warning Label	1
60	2 610 034 146	Screw	1
61	2 610 034 148	Locking Bolt	1
62	2 610 034 147	Hex Nut	1
63	2 610 035 268	Base Plate	1
64	2 610 034 141	Locking Bolt	1

Spare parts list

Item	Part Number	Description	Illustration
65	2 610 034 150	Washer	1
66	2 610 033 578	Fastening Rod	1
67	2 610 033 563	Adjusting Lever	1
68	2 610 034 159	Screw	1
70	1 619 PB7 069	Upper guard	1
71	1 619 PB6 964	Upper guard	1
72	1 619 PB6 952	Window	1
73	1 619 PB6 966	Cover	1
74	1 619 PB6 951	Lid Lock	1
75	1 619 PB6 974	Screw	1
77	1 619 PB4 911	Electronics Module	1
79	1 619 PB6 973	Washer	1
80	2 610 036 144	Product label	1
81	1 619 PB7 064	Shrinkable Tube	1
91	1 607 A35 0AT	Battery Pack	GBA 18V 8.0Ah ProCore SCM
201	2 610 034 087	DC motor	1
202	2 610 034 090	Gear	1
203	2 610 034 096	Assembly Hook	1
204	1 619 PB6 972	Housing Assembly	1
650	1 619 PA9 720	Parallel-Guide	1
651	1 619 PA9 719	Wing Screw	1
653	2 607 226 257	Fast Charger	USA GAL 18V-40 120V/ 4A/ 10.8-18V

Illustration - Type - E

3 601 FB8 080
 Stand } 21-11-24
 Issue } 21-11-24 **Fig./Abb. 1**



Änderungen vorbehalten
 Modifications reserved
 Modifications réservées
 Salvo modificaciones