



BOSCH

Compound Mitre Saw

GCM 254 | 3 601 M52 080

Table of Content

Spare parts list.....	2
Illustration - Type.....	6

Spare parts list

Item	Part Number	Description	Illustration	Price	Quantity	Price Group
22	1 619 PB9 048	Pad	1	-	3	
23	1 619 PB9 049	Bolt	1	-	1	
26	1 619 PB9 052	Base	1	-	1	
27	1 619 PB9 053	Label	1	-	2	
28	1 619 PB6 151	Spring	1	-	2	
29	1 619 PB9 055	Detent	1	-	1	
30	1 619 PB9 056	Screw	1	-	4	
31	1 619 PB9 057	Spring Clip	1	-	1	
32	1 619 PB6 149	Hex Nut Q235A	1	-	3	
36	1 619 PB9 062	Scale	1	-	1	
37	1 619 PB8 622	Screw	1	-	7	
38	1 619 PB9 064	Pointer	1	-	1	
39	1 619 PB9 065	Holder	1	-	1	
40	1 619 PB9 066	Plate	1	-	1	
41	1 619 PB9 067	Arm	1	-	1	
42	1 619 PB9 068	Washer	1	-	2	
43	1 619 PB9 069	Nut	1	-	1	
44	1 619 PB9 070	Rotary Handle	1	-	1	
45	1 619 PB6 164	Plain Washer Q235A	1	-	1	
46	1 619 PB9 072	Screw	1	-	1	
47	1 619 PB9 073	Bolt	1	-	1	
48	1 619 PB6 210	Nut	1	-	4	
49	1 600 A02 S76	Detent Pin	1	-	1	
50	1 619 PB6 174	O-Ring ABS	1	-	1	
51	1 619 PB9 077	Laser	1	-	1	
52	1 619 PB6 135	Pan head screw YL102	1	-	1	
53	1 619 PC0 545	Washer 8x2	1	-	2	
54	1 619 PB6 178	Hex Nut Q235A	1	-	1	
55	1 619 PB9 081	Pointer	1	-	1	
56	1 619 PB9 082	Cover Plate	1	-	1	
57	1 619 PB6 152	Bolt YL102	1	-	1	
58	1 619 PB9 084	Rotary Handle	1	-	1	
59	1 619 PB9 085	Bolt	1	-	1	
60	1 619 PB9 086	Mitre Fence	1	-	1	
61	1 619 PB9 087	Washer	1	-	1	

* Prices shown are suggested retail prices

Spare parts list

Item	Part Number	Description	Illustration	Price	Quantity	Price Group
62	1 619 PB9 088	Mitre Fence	1	-	1	
63	1 619 PB9 089	Washer	1	-	1	
64	1 619 PB9 090	Nut	1	-	1	
65	1 619 PB6 140	Socket head cap screw YL102	1	-	4	
66	1 619 PB6 141	Rotary Knob Q235A	1	-	1	
67	1 619 PB6 136	Pad	1	-	1	
68	1 619 PB9 094	Stopper	1	-	1	
145	1 619 PB9 171	Bolt	1	-	1	
146	1 619 PB9 172	Bolt	1	-	2	
147	1 619 PB6 137	Socket head cap screw PP-GF25+Q235A	1	-	1	
156	1 619 PB9 121	Washer	1	-	1	
157	1 619 PB6 138	Spring Washer 65Mn	1	-	1	
159	1 619 PC0 674	Label	1	-	1	
654	1 619 PB9 102	Mounting Clamp	1	-	1	
655	1 619 PB9 050	Supporting Block	1	-	1	
656	1 619 PC0 491	Extension Stand	1	-	1	
833	1 619 PB9 145	Table	1	-	1	
2	1 619 PB9 033	Field	2	-	1	
8	1 619 PB9 039	Nameplate	2	-	1	
13	1 619 PB9 042	Ball Bearing	2	-	1	
20	1 619 PB9 047	Warning Label	2	-	1	
84	1 619 PB6 194	Push-Button	2	-	1	
85	1 619 PB6 186	Countersunk-Head Screw	2	-	5	
86	1 619 PB9 112	Plate	2	-	1	
87	1 619 PB9 113	Torsion Spring	2	-	1	
88	1 619 PB6 162	Bushing Q235A	2	-	2	
89	1 619 PB6 163	Shaft PA6-GF30	2	-	1	
91	1 619 PB9 117	Dust Separator	2	-	1	
92	1 619 PB9 118	Plate	2	-	1	
94	1 619 PB9 120	Bolt	2	-	1	
95	1 619 PB6 195	Spring	2	-	1	
96	1 619 PB9 122	shaft lock	2	-	1	
97	1 619 PB9 123	Rubber Bushing	2	-	1	
98	1 619 PB9 124	Air-Deflector Ring	2	-	1	
99	1 619 PB9 125	Screw	2	-	2	

* Prices shown are suggested retail prices

Spare parts list

Item	Part Number	Description	Illustration	Price	Quantity	Price Group
100	1 619 PB9 126	Cover	2	-	2	
101	1 619 PB6 201	Set screw	2	-	2	
102	1 619 PB6 202	Pan head screw	2	-	4	
103	1 619 PB9 129	Housing Cover	2	-	1	
113	1 619 PB6 215	Bolt	2	-	1	
114	1 619 PB9 140	Clamping Flange	2	-	1	
116	1 619 PB9 142	Clamping Flange	2	-	1	
117	1 619 PB9 143	Bolt	2	-	3	
127	1 619 PB9 153	Screw	2	-	3	
158	1 619 PC0 568	Screw	2	-	4	
653	1 619 PB6 246	Dust Bag	2	-	1	
801	1 619 PB9 154	Housing Assembly	2	-	1	
803	1 619 PB9 155	Armature assembly	2	-	1	
810	1 619 PB9 144	Carbon-Brush Set	2	-	1	
851	1 619 PB9 156	Drive shaft set	2	-	1	
893	1 619 PB9 148	Upper guard	2	-	1	
4	1 619 PC0 675	Switch	3	-	1	
5	1 619 PB9 036	Power supply cord	3	-	1	
6	1 619 PB6 112	Grommet	3	-	1	
7	1 619 PB9 038	Cable Clip	3	-	1	
12	1 619 PB9 041	Capacitor	3	-	1	
19	1 619 PB9 035	Pan head screw	3	-	10	
70	1 619 PC0 569	Screw	3	-	2	
104	1 619 PB9 130	Linkage	3	-	1	
105	1 619 PB6 206	Pan head screw	3	-	1	
106	1 619 PB6 204	Shoulder Screw	3	-	2	
107	1 619 PB9 133	Plate	3	-	1	
109	1 619 PB6 213	Torx Flat-Head Screw	3	-	2	
110	1 619 PB6 212	Compression Spring	3	-	1	
111	1 619 PB6 214	Cover Plate	3	-	1	
112	1 619 PB9 127	Washer	3	-	1	
128	1 619 PB6 229	Electronic Module	3	-	1	
129	1 619 PB6 232	Terminal Block	3	-	1	
130	1 619 PB6 231	Linkage	3	-	1	
131	1 619 PB6 243	Linkage	3	-	1	

* Prices shown are suggested retail prices

Spare parts list

Item	Part Number	Description	Illustration	Price	Quantity	Price Group
132	1 619 PB9 158	Handle	3	-	1	
133	1 619 PB6 235	Pan head screw	3	-	2	
134	1 619 PB6 236	Pan head screw	3	-	2	
135	1 619 PB6 237	Handle	3	-	1	
136	1 619 PB6 239	Switch	3	-	1	
137	1 619 PB9 163	Screw	3	-	1	
138	1 619 PB6 244	Spring	3	-	1	
139	1 619 PB9 165	Induction Coil	3	-	1	
140	1 619 PB9 166	Switch Button	3	-	1	
141	1 619 PB6 241	Spring	3	-	1	
142	1 619 PB9 168	Handle	3	-	1	
143	1 619 PB6 228	Interlock	3	-	1	
150	1 619 PB9 176	Connecting Cable	3	-	1	
151	1 619 PB9 177	Connector Cable	3	-	1	
152	1 619 PB6 233	Pan head screw	3	-	1	
651	1 619 PB9 159	Clamping wrench	3	-	1	
652	1 619 PB9 141	measuring ruler	3	-	1	
818	1 619 PB9 151	Plate	3	-	1	

* Prices shown are suggested retail prices

Illustration - Type - E

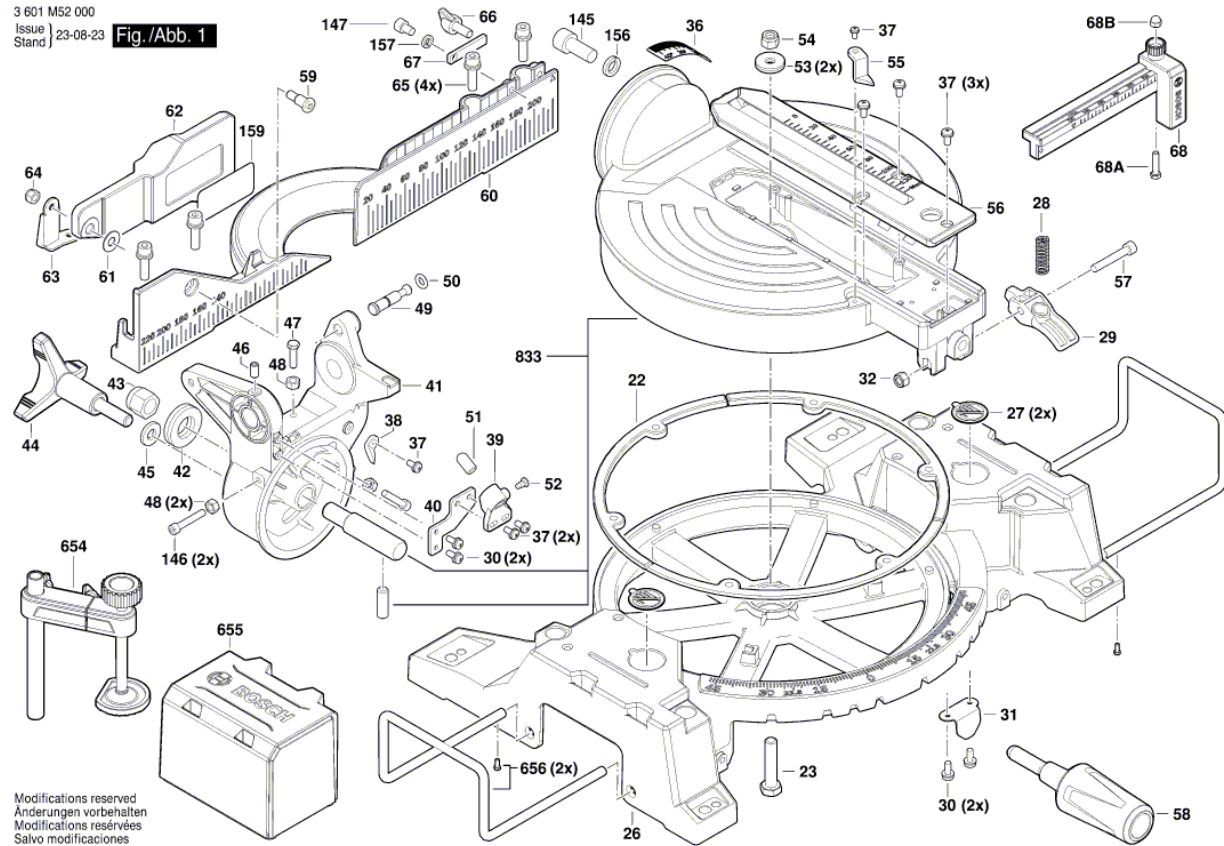
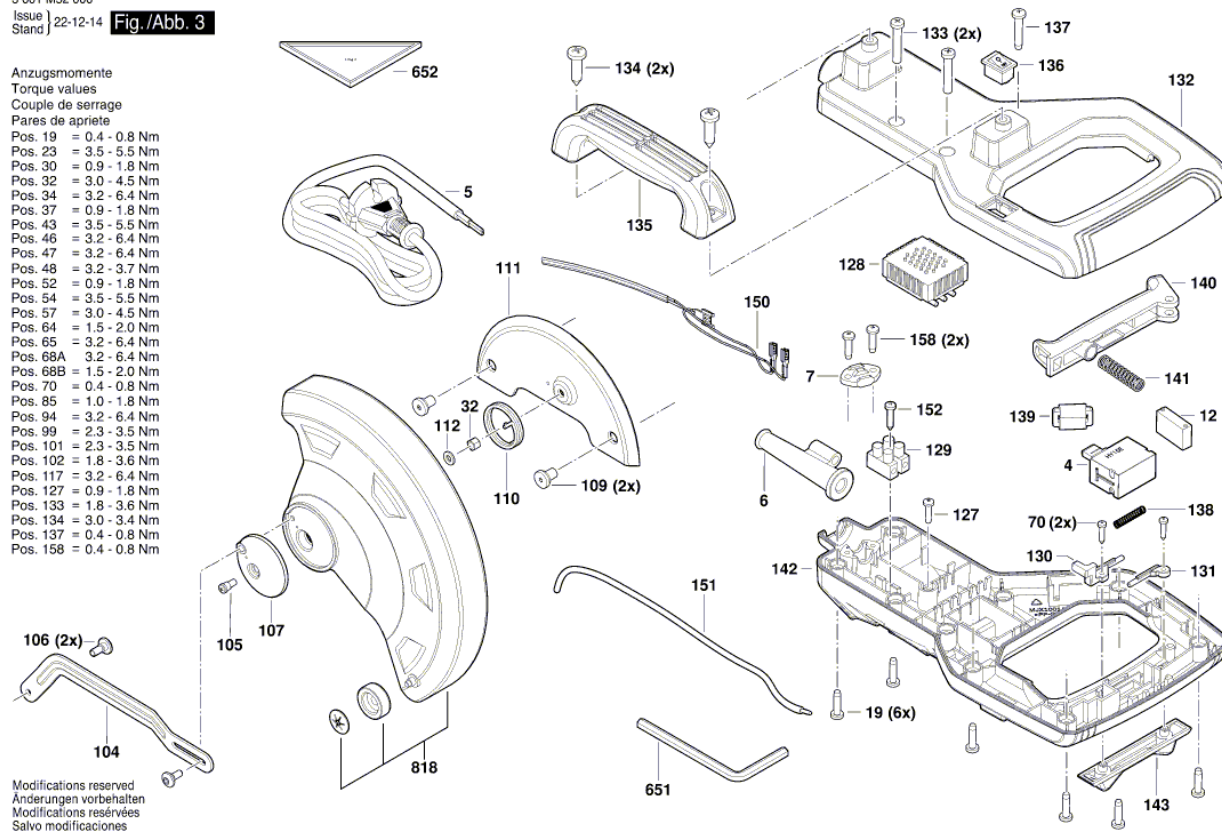


Illustration - Type - E

3 601 M52 000

Issue | 22-12-14 | Fig./Abb. 3

- Anzugsmomente
 Torque values
 Couple de serrage
 Pares de apriete
- Pos. 19 = 0.4 - 0.8 Nm
 - Pos. 23 = 3.5 - 5.5 Nm
 - Pos. 30 = 0.9 - 1.8 Nm
 - Pos. 32 = 3.0 - 4.5 Nm
 - Pos. 34 = 3.2 - 6.4 Nm
 - Pos. 37 = 0.9 - 1.8 Nm
 - Pos. 43 = 3.5 - 5.5 Nm
 - Pos. 46 = 3.2 - 6.4 Nm
 - Pos. 47 = 3.2 - 6.4 Nm
 - Pos. 48 = 3.2 - 3.7 Nm
 - Pos. 52 = 0.9 - 1.8 Nm
 - Pos. 54 = 3.5 - 5.5 Nm
 - Pos. 57 = 3.0 - 4.5 Nm
 - Pos. 64 = 1.5 - 2.0 Nm
 - Pos. 65 = 3.2 - 6.4 Nm
 - Pos. 68A = 3.2 - 6.4 Nm
 - Pos. 68B = 1.5 - 2.0 Nm
 - Pos. 70 = 0.4 - 0.8 Nm
 - Pos. 85 = 1.0 - 1.8 Nm
 - Pos. 94 = 3.2 - 6.4 Nm
 - Pos. 99 = 2.3 - 3.5 Nm
 - Pos. 101 = 2.3 - 3.5 Nm
 - Pos. 102 = 1.8 - 3.6 Nm
 - Pos. 117 = 3.2 - 6.4 Nm
 - Pos. 127 = 0.9 - 1.8 Nm
 - Pos. 133 = 1.8 - 3.6 Nm
 - Pos. 134 = 3.0 - 3.4 Nm
 - Pos. 137 = 0.4 - 0.8 Nm
 - Pos. 158 = 0.4 - 0.8 Nm



Modifications reserved
 Änderungen vorbehalten
 Modifications réservées
 Salvo modificaciones