

Slide Mitre Saw - 0 601 B21 003 - GCM 12

www.powertools-aftersaleservice.com



BOSCH

Item	Part Number	Description	Illustration	Price	Quantity	Price Group
	1 2 610 967 440	Motor Housing	1	-,-	1	34
	2 2 610 020 976	Stator	1	-,-	1	46
	3 2 610 020 934	Rotor	1	-,-	1	52
	4 1 609 902 612	On-Off Switch	1	-,-	1	34
	4/1 2 610 358 901	Screw	1	-,-	1	11
	5 1 609 203 G66	Power supply cord	1	-,-	1	34
	6 2 610 911 464	Grommet	1	-,-	1	14
	7 2 610 910 756	Cable Clip	1	-,-	1	11
	8 2 610 911 450	Washer	1	-,-	1	11
	9 1 609 902 621	Manufacturer's nameplate	1	-,-	1	15
	12 2 610 911 485	Bearing Sleeve	1	-,-	1	14
	13 1 900 905 232	groove ball bearing 6200-2Z DIN 625	1	-,-	1	29
	14 1 609 902 600	groove ball bearing	1	-,-	1	20
	15 2 610 911 486	Protractor	1	-,-	1	14
	16 2 610 911 488	Brush Holder	1	-,-	1	30
	17 1 609 203 H39	Cable	1	-,-	1	20
	18 2 610 910 780	Cable	1	-,-	1	21
	19 2 610 911 477	Air-Deflector Ring	1	-,-	1	21
	20 2 610 911 474	Gear Housing	1	-,-	1	34
	21 2 610 911 487	Cover	1	-,-	2	17
	22 2 610 911 479	Bearing Flange	1	-,-	1	27
	23 2 610 911 452	Screw	1	-,-	2	11
	25 2 610 910 785	Screw	1	-,-	2	10
	26 2 610 910 754	Spring Wire	1	-,-	1	11
	28 2 610 910 046	Spring Washer	1	-,-	1	10
	29 2 615 296 765	Screw	1	-,-	2	11
	30 2 610 910 827	Switch Button	1	-,-	1	22
	31 2 610 355 337	Screw	1	-,-	2	15
	32 2 610 911 458	Screw	1	-,-	4	12
	33 1 609 203 G68	Toothed Gear	1	-,-	1	41
	34 2 610 910 789	Ball Bearing	1	-,-	1	28
	35 2 610 910 787	Ball Bearing	1	-,-	1	27
	36 2 610 990 525	Lever	1	-,-	1	25

Item	Part Number	Description	Illustration	Price	Quantity	Price Group
37	2 610 910 849	Collar	1	-,-	1	11
38	2 610 910 821	Tab Washer	1	-,-	1	21
40	2 610 908 270	Washer	2	-,-	1	11
44	1 609 902 604	Angle Joint	2	-,-	1	39
45	2 610 967 445	Handle	1	-,-	1	27
46	2 610 910 761	Cover Pin	2	-,-	1	15
47	1 609 203 G71	Self-locking nut	2	-,-	1	11
48	2 610 990 504	Cable Clip	1	-,-	1	10
49	2 610 355 338	Screw	1	-,-	4	15
50	1 609 902 605	Base Plate	2	-,-	1	47
51	2 610 910 757	Bar	2	-,-	1	21
52	2 610 910 768	Retaining Pin	2	-,-	1	16
53	2 610 910 765	Compression Spring	2	-,-	1	10
54	2 610 910 838	Tensioning Lever	2	-,-	1	27
55	1 609 203 G72	Toothed lock washer	2	-,-	1	20
56	2 610 910 848	Pivot	1	-,-	1	15
57	2 610 910 837	Intermediate Plate	2	-,-	1	25
58	2 610 910 769	Bolt	2	-,-	1	18
59	2 610 910 842	Pivot	1	-,-	1	20
60	2 610 911 484	Locking Pin	1	-,-	1	22
61	2 610 910 770	Spring	1	-,-	1	11
62	2 610 910 781	Screw	2	-,-	6	11
63	1 609 203 G73	Screw	1	-,-	2	11
64	2 610 910 796	Bolt	1	-,-	1	14
65	2 610 910 750	End stop	1	-,-	1	10
66	2 610 911 465	Washer	1	-,-	2	12
67	2 610 910 788	O-Ring	2	-,-	1	10
68	2 610 910 783	Nut	2	-,-	1	11
69	2 615 297 323	Screw	1	-,-	1	11
71	2 610 910 790	Screw	2	-,-	1	10
72	2 610 910 791	Nut	2	-,-	1	15
73	2 610 911 451	Screw	1	-,-	1	11
74	2 610 911 460	Screw	1	-,-	2	11
75	2 610 910 786	Set screw	2	-,-	1	10
76	2 610 910 751	Sleeve	1	-,-	1	18
77	2 610 910 760	Nut	2	-,-	1	17
78	2 610 910 797	Screw	1	-,-	1	13
79	1 609 203 G74	Nut	2	-,-	1	10
80	1 609 203 G75	Screw	2	-,-	2	11
81	2 610 910 784	Screw	1	-,-	3	10
82	2 610 911 455	Spring Washer	1	-,-	2	10
83	2 610 910 779	Washer	2	-,-	1	10
84	1 609 902 582	Washer	2	-,-	1	10
86	2 610 911 466	Screw M 8x0.8-10	2	-,-	1	10
87	2 610 355 304	Plain Washer	1	-,-	2	15
88	2 610 910 762	Screw	2	-,-	1	18
89	2 610 910 766	Sleeve	2	-,-	1	19
90	2 610 355 264	Plain Washer	2	-,-	1	15
91	2 610 910 752	Spring Lock Washer	1	-,-	1	13
93	1 609 902 584	Stud bolt	2	-,-	1	11
94	1 609 902 585	Stud bolt	2	-,-	1	14
95	1 609 902 586	Stud bolt	2	-,-	1	17
96	2 610 910 758	Spring	2	-,-	1	11

Item	Part Number	Description	Illustration	Price	Quantity	Price Group
97	1 609 203 G76	Hex Nut	2	-,-	2	20
98	1 609 902 606	Safety Cover	1	-,-	1	35
99	2 610 911 461	Screw	1	-,-	4	12
100	2 610 990 503	Spring Washer	1	-,-	3	10
101	1 609 203 G77	Flange	1	-,-	1	27
102	1 609 203 G78	Flange	1	-,-	1	29
103	2 610 910 755	Torsion Spring	1	-,-	1	26
104	2 610 910 753	Sleeve	1	-,-	2	11
105	1 619 P03 783	Inset Plate	2	-,-	1	19
106	2 610 910 833	End Plate	2	-,-	1	20
107	2 610 910 835	Gusset plate	2	-,-	1	17
109	2 610 910 839	Pivot	2	-,-	1	22
110	1 609 203 G79	Handle	1	-,-	1	37
111	2 610 967 449	Saw Table	2	-,-	1	49
112	2 610 910 822	Clamping Lever	2	-,-	1	24
113	2 610 910 831	Indicator Rail	2	-,-	1	19
114	1 609 902 607	Stop Rail	2	-,-	1	40
115	2 610 916 122	Plate	2	-,-	1	19
116	1 609 902 608	Stop Rail	2	-,-	1	34
118	2 610 358 055	Socket head cap screw	2	-,-	2	18
119	2 610 309 996	Washer	2	-,-	2	10
120	2 610 910 775	Lever	2	-,-	1	25
121	2 610 910 830	Sliding Plate	2	-,-	3	22
122	2 610 911 658	Warning Plate	2	-,-	2	15
123	1 609 902 609	Mounting Bracket	2	-,-	1	25
124	2 610 911 470	Set Of Keys	2	-,-	1	16
125	2 610 355 577	Hexagon Socket Wrench	2	-,-	1	15
126	2 610 910 844	Threaded Plate	2	-,-	1	11
128	2 610 990 522	Bearing	1	-,-	1	11
129	2 610 990 518	Roller	1	-,-	1	11
130	1 619 P03 548	Rubber Bushing	2	-,-	4	14
132	2 610 907 783	Protecting Cover	1	-,-	1	46
133	2 610 911 459	Screw	1	-,-	1	10
136	2 610 910 777	Screw	2	-,-	1	10
137	1 609 902 588	Screw	2	-,-	3	11
138	1 609 203 G80	Screw	2	-,-	2	11
139	2 610 911 469	Screw	2	-,-	2	10
140	2 610 355 320	Retaining snap ring	1	-,-	1	18
141	2 610 910 794	Hex Nut	2	-,-	2	10
142	2 610 320 345	Screw	1	-,-	1	10
143	2 610 911 456	Screw	1	-,-	2	13
144	2 610 910 782	Screw	2	-,-	1	10
145	2 610 910 774	Nut	2	-,-	1	10
146	2 610 910 776	Screw	2	-,-	1	12
148	2 610 910 799	Screw	1	-,-	1	13
149	2 610 355 293	Screw	1	-,-	1	16
150	2 610 911 467	Stud bolt	1	-,-	1	16
152	1 609 203 G95	Protective Cover	1	-,-	1	23
153	2 610 990 521	Spring retaining ring	1	-,-	1	10
154	2 610 967 433	Clamping Plate	2	-,-	1	16
155	2 610 358 439	Plain Washer	N/A	-,-	1	10
156	2 610 967 438	Spring retaining ring	2	-,-	1	10
157	2 610 967 439	Nut	2	-,-	1	11

Item	Part Number	Description	Illustration	Price	Quantity	Price Group
158	2 610 992 372	Stud bolt	2	-,-	1	11
159	2 615 303 020	Seal	2	-,-	1	10
160	2 610 992 366	Ring	2	-,-	1	10
191	2 610 967 432	Clamp	2	-,-	1	19
192	1 609 902 592	Ferrite Core	1	-,-	1	16
193	1 609 902 610	Condenser	1	-,-	1	19
194	1 609 203 G83	Insert	1	-,-	1	12
195	1 609 203 G84	Cover	1	-,-	1	27
196	1 609 203 G86	Screw	1	-,-	2	11
197	1 609 902 594	Hex Nut	1	-,-	2	10
198	1 609 902 474	Screw	1	-,-	1	10
199	1 609 902 475	Roller	1	-,-	1	11
200	1 609 902 476	Locking Lever	1	-,-	1	21
201	1 609 203 G91	Bearing bolt	1	-,-	1	11
202	1 609 203 G92	Cover Plate	2	-,-	1	18
203	1 609 203 G94	Screw	2	-,-	3	10
204	1 609 203 H34	Screw	2	-,-	1	10
205	1 609 203 G93	Coiled Spring	1	-,-	1	12
206	1 609 902 377	Protective Cover	N/A	-,-	1	10
207	1 609 902 477	Washer	N/A	-,-	1	10
208	1 609 902 478	Lock Bolt	N/A	-,-	1	10
209	1 609 902 646	Nameplate	1	-,-	1	11
650	1 609 902 596	Dust Bag	1	-,-	1	33
652	2 610 910 828	Key	1	-,-	1	22
654	2 610 910 845	Suction Tube	1	-,-	1	19
670	2 610 919 256	Fitting	N/A	-,-	1	-
810	1 619 P04 451	Carbon-Brush Set	1	-,-	1	27

Illustration - Type E

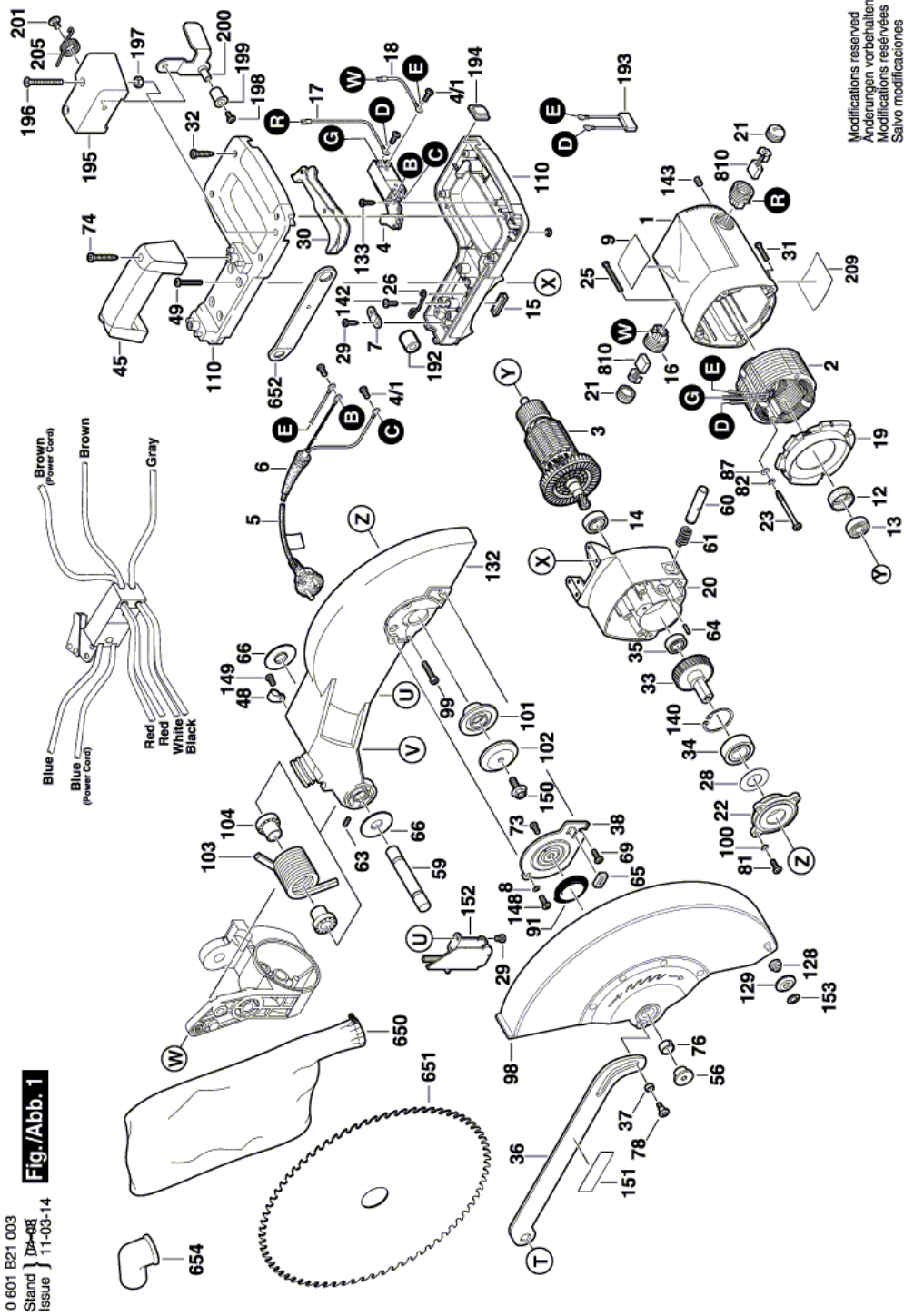


Illustration - Type E

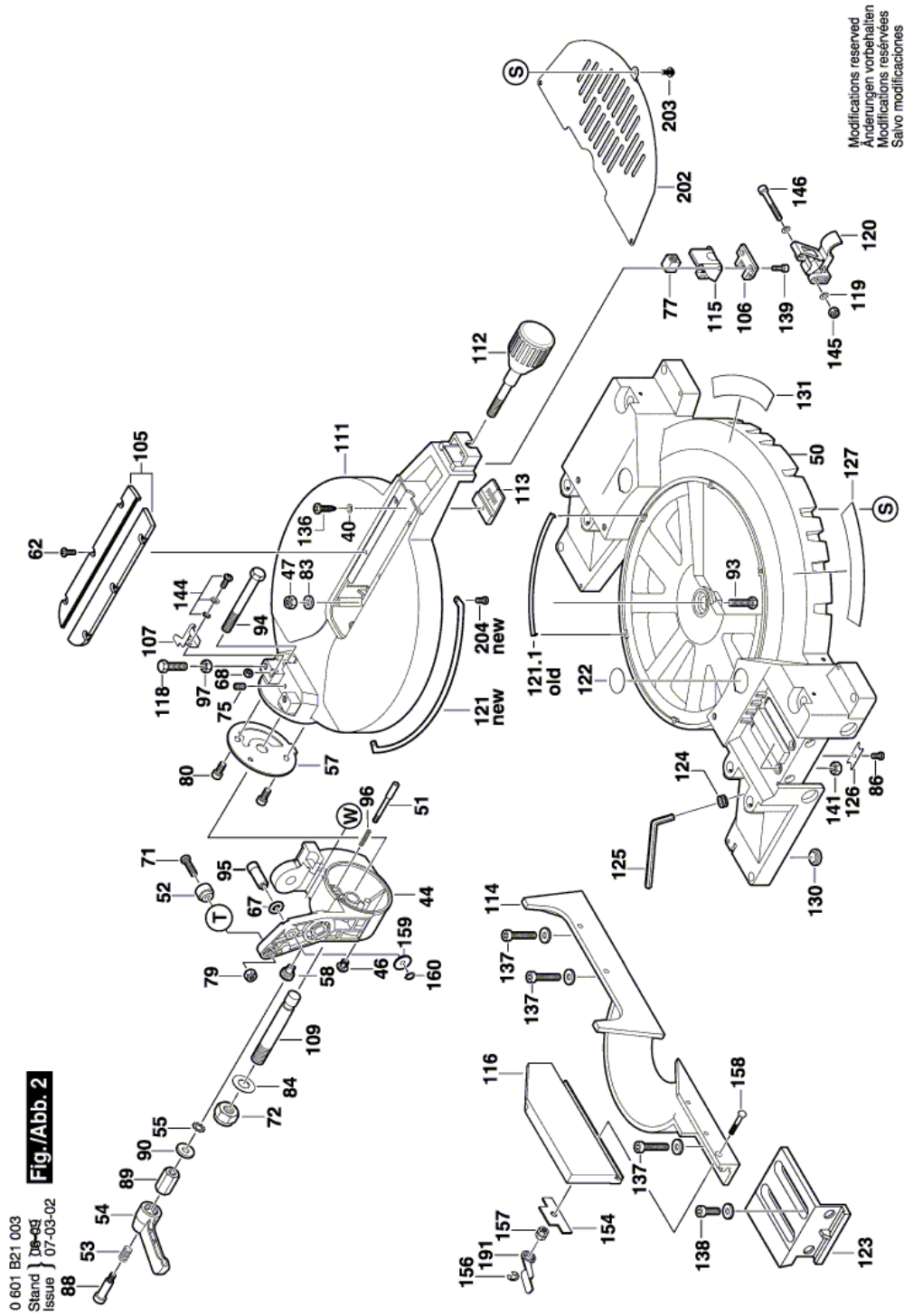
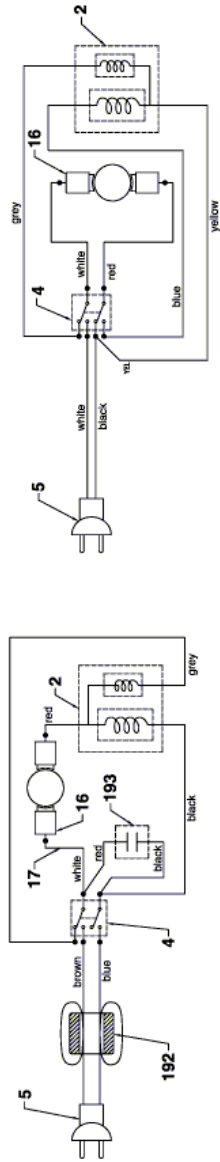
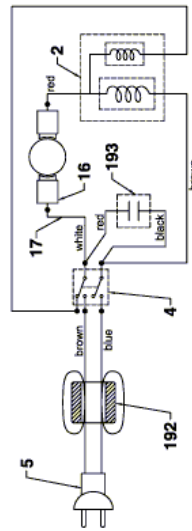


Illustration - Type E

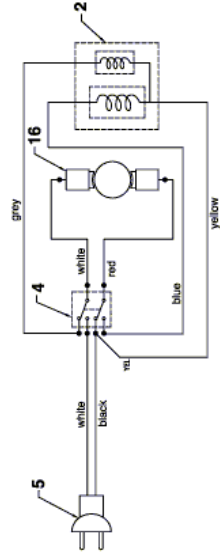
0 601 B21 003
 Stand } ~~DA-04~~
 Issue } 04-07-26
Fig./Abb. 3



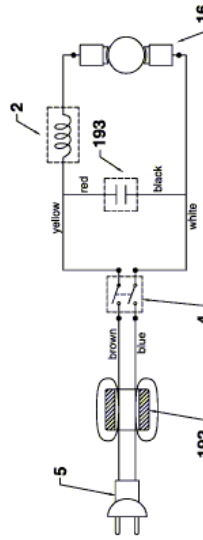
A. WIRING DIAGRAM FOR 03, 08, 32, 42 EXECUTIONS



B. WIRING DIAGRAM FOR 41 EXECUTION



C. WIRING DIAGRAM FOR 34 EXECUTION



C. WIRING DIAGRAM FOR 37 EXECUTION

Modifications reserved
 Änderungen vorbehalten
 Modifications réservées
 Salvo modificaciones

Information subject to change without further notice.