

## Un. 2-Speed Drill - 0 601 121 139 - GBM 23-2

www.powertools-aftersaleservice.com

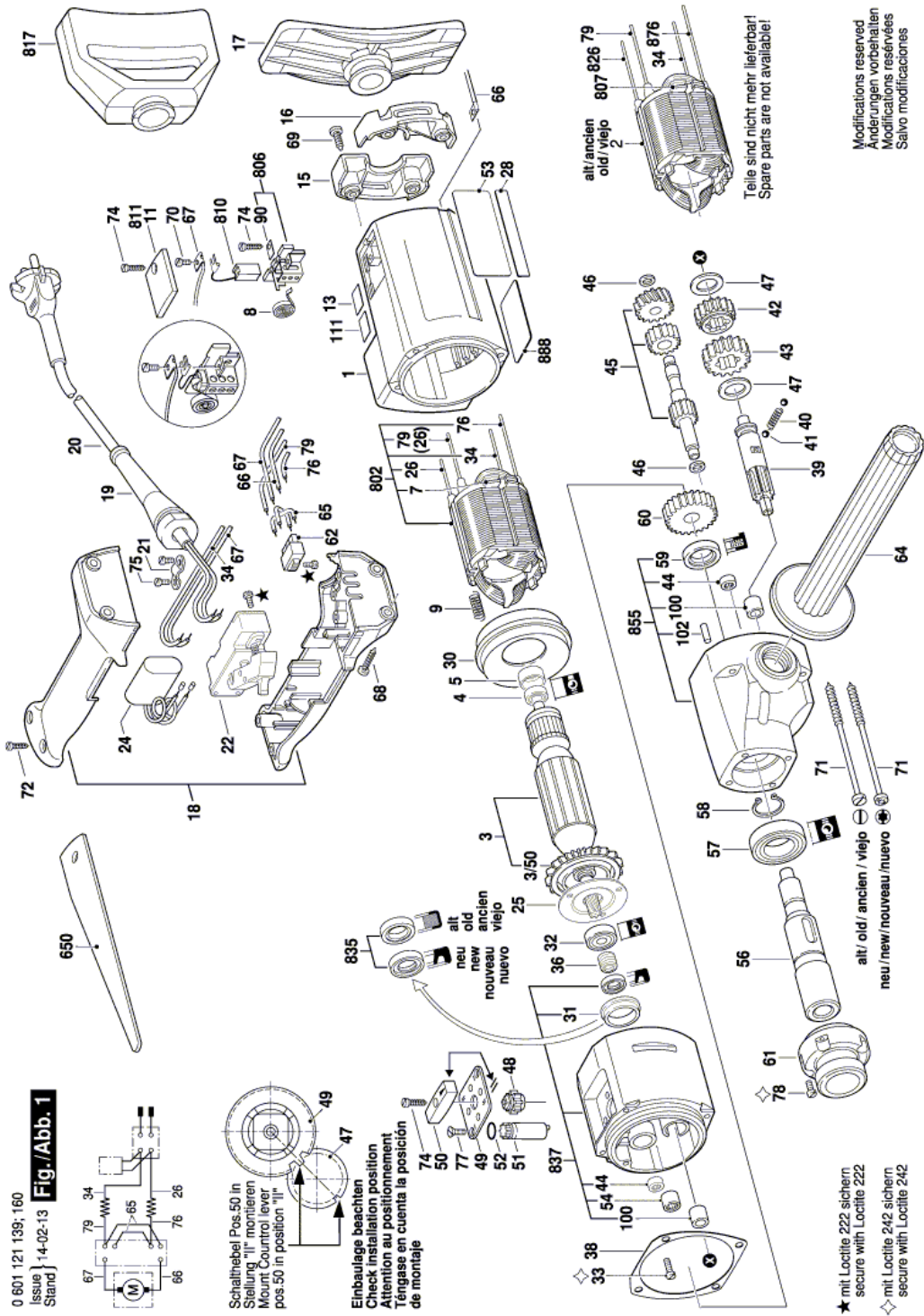


**BOSCH**

Item	Part Number	Description	Illustration	Price	Quantity	Price Group
	1 3 605 108 091	Motor Housing BLUE	1	-,-	1	34
	3 3 604 010 005	Armature 110-115V	1	-,-	1	48
	3/50 1 606 610 122	Fan	1	-,-	1	13
	4 2 600 905 032	Deep-Groove Ball Bearing 7x19x6	1	-,-	1	17
	5 1 600 502 011	Intermediate Ring	1	-,-	1	11
	7 3 601 025 003	Wire Guide	1	-,-	4	11
	8 1 604 652 006	Spiral Spring	1	-,-	2	11
	9 1 604 613 006	Compression Spring	1	-,-	2	11
	11 3 605 500 063	Sealing cap BLUE	1	-,-	2	16
	13 1 601 110 058	Reference Plate DOUBLE INSULATION	1	-,-	1	11
	15 3 605 500 058	Sealing cap BLUE	1	-,-	1	25
	16 3 605 500 059	Sealing cap BLUE	1	-,-	1	26
	17 3 601 012 003	Pressure Plate	1	-,-	1	21
	18 3 605 132 027	Handle BLUE	1	-,-	1	28
	19 3 600 703 011	Grommet Ø9,2-Ø12x120 MM	1	-,-	1	13
	20 1 604 460 092	Power supply cord USA/CDN 2,15m 2 x 2,08mm SJ 14/2	1	-,-	1	28
	21 1 601 302 014	Fastening Clamp	1	-,-	1	11
	22 1 607 200 078	Switch	1	-,-	1	36
	25 3 605 500 034	Bearing cover	1	-,-	1	19
	26 3 604 438 025	Connecting Cable L=470 MM WHITE	1	-,-	1	18
	28 3 601 110 151	Sticker	1	-,-	1	15
	30 1 600 502 019	Air-Deflector Ring	1	-,-	1	15
	31 1 600 221 003	Intermediate Ring	1	-,-	1	11
	32 3 600 905 131	Deep-Groove Ball Bearing 9x26x8	1	-,-	1	23
	33 2 910 021 118	Socket head cap screw DIN 84-AM4x8-8.8	1	-,-	3	10
	34 1 604 438 012	Connecting Cable L=330 MM WHITE	1	-,-	1	16
	36 1 600 300 090	Intermediate Ring	1	-,-	1	14
	38 1 601 015 013	Sealing Plate	1	-,-	1	11
	39 1 606 309 066	Toothed Shaft Z=9	1	-,-	1	44
	40 1 604 611 022	Compression Spring	1	-,-	1	11
	41 1 903 230 009	Ball DIN 5401-5 G28	1	-,-	2	10
	42 1 606 317 074	Cylindrical Gear Z=32	1	-,-	1	35
	43 1 606 317 082	Cylindrical Gear Z=43	1	-,-	1	36

Item	Part Number	Description	Illustration	Price	Quantity	Price Group
44	1 600 910 013	Needle bearing	1	-,-	2	18
45	1 606 309 065	Pinion Shaft Z=14/24/33	1	-,-	1	44
46	1 600 100 631	Shim 0,5 MM THICK	1	-,-	2	11
47	1 600 101 647	Shim 0,6 MM THICK	1	-,-	2	11
48	1 606 325 025	Control Shaft Z=20	1	-,-	1	14
49	1 601 038 025	Notched Plate	1	-,-	1	11
50	1 602 026 044	Control Lever	1	-,-	1	20
51	1 606 325 027	Control Shaft Z=10	1	-,-	1	22
52	1 900 210 105	O-Ring 8x2,5 MM	1	-,-	1	11
54	2 600 910 001	Needle bearing Ø14 MM	1	-,-	1	16
56	3 606 135 009	Drilling Spindle	1	-,-	1	44
57	1 900 905 126	Deep-Groove Ball Bearing 25x47x12	1	-,-	1	34
58	2 916 650 014	Spring retaining ring DIN 471 25x1,2	1	-,-	1	11
59	3 600 290 035	Seal ring 20x31x7 MM	1	-,-	1	24
60	1 606 317 084	Cylindrical Gear Z=39	1	-,-	1	34
61	1 605 703 075	Fastening Flange	1	-,-	1	37
62	3 607 200 025	Switch	1	-,-	1	32
64	1 600 763 010	Handle 400 MM BLACK	1	-,-	1	36
65	3 604 412 002	Connecting Cable L=60 MM BLUE	1	-,-	2	18
66	3 604 460 011	Connecting Cable L=330 MM WHITE	1	-,-	1	14
67	3 604 460 012	Connecting Cable L=200 MM BLUE	1	-,-	1	14
68	3 603 435 027	Tapping Screw 5x30	1	-,-	4	10
69	1 603 412 007	Tapping Screw B4,8x29 MM	1	-,-	4	11
70	2 910 021 118	Socket head cap screw DIN 84-AM4x8-8.8	1	-,-	2	10
71	3 603 435 042	Lens Head Screw	1	-,-	4	11
72	2 914 201 508	Torx Oval-Head Screw	1	-,-	3	10
74	2 910 211 019	Tapping Screw DIN 7971-ST3,9x16-F	1	-,-	5	10
75	2 910 021 118	Socket head cap screw DIN 84-AM4x8-8.8	1	-,-	2	10
76	3 604 438 027	Connecting Cable L=375 MM	1	-,-	1	19
77	2 910 501 120	Countersunk-Head Screw DIN 63-AM4x10-5.8	1	-,-	2	10
78	2 910 021 154	Socket head cap screw DIN 84-AM5x12-8.8	1	-,-	4	10
79	3 604 460 010	Connecting Cable L=200 MM GRAY	1	-,-	1	14
90	1 601 030 022	Tab Washer	1	-,-	2	11
100	3 600 328 033	Bushing	1	-,-	2	22
102	2 917 500 121	Straight Pin 5 H 8x18 DIN 7	1	-,-	1	10
650	3 601 030 002	Drift	1	-,-	1	24
802	3 604 220 153	Field 110-115V	1	-,-	1	40
806	1 607 000 189	Brush Holder	1	-,-	1	19
807	1 601 025 001	Wire Guide	1	-,-	4	11
810	3 607 014 012	Carbon-Brush Set	1	-,-	1	31
817	3 605 133 010	Handle DARK BLUE	1	-,-	1	37
826	3 604 460 009	Connecting Cable L=450 MM WHITE	1	-,-	1	17
835	3 600 290 070	Rotary shaft lip seal	1	-,-	1	20
837	3 607 030 437	Intermediate Bearing	1	-,-	1	45
855	1 605 806 382	Spindle Bearing	1	-,-	1	47
876	1 604 438 013	Connecting Cable L=345 MM GRAY	1	-,-	1	16
888	1 601 106 032	Nameplate 26x52 MM	1	-,-	1	13

Illustration - Type E



Information subject to change without further notice.