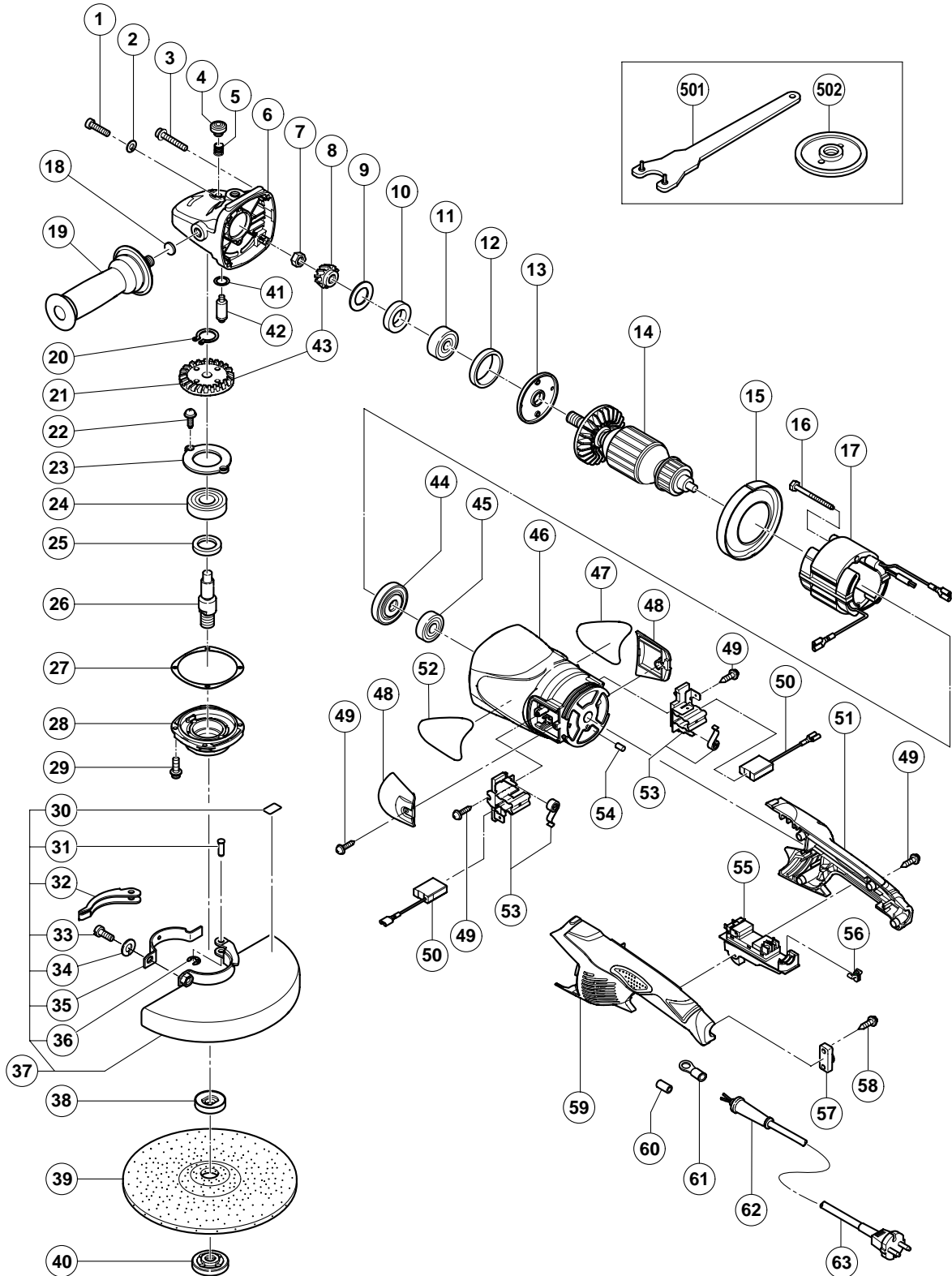


## ELECTRIC TOOL PARTS LIST

### DISC GRINDER Model G 23MR

2004 • 2 • 20

(E1)



**PARTS**

G 23MR

| ITEM NO. | CODE NO. | DESCRIPTION                            | NO. USED | REMARKS                               |
|----------|----------|--|----------|---------------------------------------|
| 1        | 984-509  | SEAL LOCK HEX. SOCKET HD. BOLT M5X14   | 2        |                                       |
| 2        | 949-454  | SPRING WASHER M5 (10 PCS.)             | 2        |                                       |
| 3        | 313-585  | HEX. SOCKET HD. BOLT (W/FLANGE) M5X30  | 4        |                                       |
| 4        | 306-888  | PUSHING BUTTON                         | 1        |                                       |
| 5        | 320-219  | SPRING                                 | 1        |                                       |
| 6        | 322-544  | GEAR COVER ASS'Y                       | 1        | INCLUD. 4, 5, 18, 41, 42              |
| 7        | 320-226  | SPECIAL NUT M10                        | 1        |                                       |
| 8        | 320-225  | PINION                                 | 1        |                                       |
| 9        | 320-221  | SEAL WASHER                            | 1        |                                       |
| 10       | 320-222  | FELT PACKING                           | 1        |                                       |
| 11       | 630-1DD  | BALL BEARING 6301DDCMPS2L              | 1        |                                       |
| 12       | 994-208  | RUBBER RING (B)                        | 1        |                                       |
| 13       | 320-220  | BEARING COVER (A)                      | 1        |                                       |
| * 14     | 360-629U | ARMATURE ASS'Y 110V-120V               | 1        | INCLUD. 10, 11, 44, 45                |
| * 14     | 360-594E | ARMATURE 220V-230V                     | 1        |                                       |
| * 14     | 360-594F | ARMATURE 240V                          | 1        |                                       |
| 15       | 320-215  | FAN GUIDE                              | 1        |                                       |
| 16       | 984-271  | HEX. HD. TAPPING SCREW D5X75           | 2        |                                       |
| * 17     | 340-546C | STATOR 110V-120V                       | 1        |                                       |
| * 17     | 340-546E | STATOR 220V-230V                       | 1        |                                       |
| * 17     | 340-546F | STATOR 240V                            | 1        |                                       |
| 18       | 937-033  | FELT WASHER                            | 1        |                                       |
| 19       | 322-411  | SIDE HANDLE                            | 1        |                                       |
| 20       | 939-542  | RETAINING RING FOR D12 SHAFT (10 PCS.) | 1        |                                       |
| 21       | 320-224  | GEAR                                   | 1        |                                       |
| 22       | 949-236  | MACHINE SCREW M5X10 (10 PCS.)          | 2        |                                       |
| 23       | 320-229  | BEARING COVER (B)                      | 1        |                                       |
| 24       | 630-2DD  | BALL BEARING 6302DDCMPS2L              | 1        |                                       |
| 25       | 990-852  | FELT PACKING (B)                       | 1        |                                       |
| * 26     | 320-234  | SPINDLE                                | 1        |                                       |
| * 26     | 321-541  | SPINDLE                                | 1        | FOR USA, CAN                          |
| 27       | 320-228  | SEAL PLATE                             | 1        |                                       |
| 28       | 320-227  | PACKING GLAND                          | 1        |                                       |
| 29       | 994-192  | HEX. SOCKET HD. BOLT (W/FLANGE) M5X16  | 4        |                                       |
| 30       | 311-492  | LABEL                                  | 1        |                                       |
| 31       | 321-546  | SET PIN                                | 1        |                                       |
| 32       | 321-545  | LEVER                                  | 1        |                                       |
| 33       | 306-887  | BOLT M8X22                             | 1        |                                       |
| 34       | 949-457  | SPRING WASHER M8 (10 PCS.)             | 1        |                                       |
| 35       | 321-544  | SET PIECE                              | 1        |                                       |
| 36       | 673-489  | RETAINING RING (E-TYPE) FOR D5 SHAFT   | 1        |                                       |
| 37       | 321-547  | WHEEL GUARD ASS'Y                      | 1        | INCLUD. 30-36                         |
| * 38     | 937-907Z | WHEEL WASHER (A)                       | 1        |                                       |
| * 38     | 937-922P | WHEEL WASHER (B) FOR D5/8" HOLE        | 1        | FOR USA, CAN                          |
| * 38     | 937-908Z | WHEEL WASHER (B)                       | 1        | FOR AUS, NZL                          |
| * 38     | 310-337  | SUPER WASHER                           | 1        | FOR BEL                               |
| * 39     | 316-825  | D. C. WHEELS 230MM A24R (25 PCS.)      | 1        | FOR INA, SYR, NZL, AUS, SAF, CAN, CHN |
| * 40     | 937-909Z | WHEEL NUT M14X2                        | 1        |                                       |
| * 40     | 937-923P | WHEEL NUT 5/8"-11UNC                   | 1        | FOR USA, CAN                          |
| 41       | 320-218  | O-RING                                 | 1        |                                       |
| 42       | 306-890  | LOCK PIN                               | 1        |                                       |

**PARTS**

G 23MR

| ITEM NO. | CODE NO. | DESCRIPTION                            | NO. USED                               | REMARKS       |   |
|----------|----------|--|--|---------------|---|
| 43       | 320-223  | GEAR AND PINION ASS'Y                  | 1                                      | INCLUD. 8, 21 |   |
| 44       | 320-216  | DUST SEAL                              | 1                                      |               |   |
| 45       | 620-0VV  | BALL BEARING 6200VVCMP2L               | 1                                      |               |   |
| 46       | 322-543  | HOUSING                                | 1                                      |               |   |
| 47       |          | NAME PLATE                             | 1                                      |               |   |
| 48       | 322-547  | BRUSH COVER                            | 2                                      |               |   |
| 49       | 305-812  | TAPPING SCREW (W/FLANGE) D4X16 (BLACK) | 8                                      |               |   |
| *        | 50       | 999-061                                | CARBON BRUSH 7X17X22.5 (1 PAIR)        | 2             |   |
| *        | 50       | 999-061                                | CARBON BRUSH 7X17X22.5 (1 PAIR)        | 1             | FOR NZL, SFA, EUROPE                              |
| *        | 50       | 999-089                                | CARBON BRUSH (AUTO STOP TYPE) (1 PAIR) | 1             | FOR NZL, SAF, EUROPE                              |
|          | 51       | 322-546                                | HANDLE (B)                             | 1             |   |
|          | 52       |  | HITACHI LABEL                          | 1             |   |
|          | 53       | 322-323                                | BRUSH HOLDER SET                       | 2             |   |
|          | 54       | 946-362                                | BEARING LOCK                           | 1             |   |
| *        | 55       | 320-239                                | SWITCH (2P PILLAR TYPE) W/SAFETY LOCK  | 1             | OFF/ON LOCK (A: BLACK, B: BLACK)                  |
| *        | 55       | 320-238                                | SWITCH (2P PILLAR TYPE) W/SAFETY LOCK  | 1             | OFF LOCK (A: GRAY, B: BLACK)                      |
| *        | 55       | 322-614                                | SWITCH (2P PILLAR TYPE) W/SAFETY LOCK  | 1             | INCLUD. 56 FOR USA, CAN                           |
| *        | 56       | 322-549                                | SWITCH COVER                           | 1             | FOR USA, CAN                                      |
|          | 57       | 960-266                                | CORD CLIP                              | 1             |   |
|          | 58       | 984-750                                | TAPPING SCREW (W/FLANGE) D4X16         | 2             |   |
|          | 59       | 322-545                                | HANDLE (A)                             | 1             |   |
| *        | 60       | 981-373                                | TUBE (D)                               | 2             | FOR CORD  |
| *        | 61       | 930-804                                | TERMINAL M4.0 (10 PCS.)                | 2             | FOR CORD  |
| *        | 62       | 958-049                                | CORD ARMOR D8.2                        | 1             |   |
| *        | 62       | 940-778                                | CORD ARMOR D10.7                       | 1             |   |
| *        | 63       | 500-245Z                               | CORD                                   | 1             | (CORD ARMOR D10.7)                                |
| *        | 63       | 321-537                                | CORD                                   | 1             | (CORD ARMOR D10.7) FOR EUROPE, FIN, NOR, SWE, DEN |
| *        | 63       | 500-234Z                               | CORD                                   | 1             | (CORD ARMOR D10.7) FOR INA                        |
| *        | 63       | 500-408Z                               | CORD                                   | 1             | (CORD ARMOR D8.2) FOR AUS, NZL                    |
| *        | 63       | 321-538                                | CORD                                   | 1             | (CORD ARMOR D10.7) FOR USA, CAN                   |
| *        | 63       | 321-539                                | CORD                                   | 1             | (CORD ARMOR D10.7) FOR GBR (110V)                 |
| *        | 63       | 500-446Z                               | CORD                                   | 1             | (CORD ARMOR D10.7) FOR GBR (230V)                 |
| *        | 63       | 500-438Z                               | CORD                                   | 1             | (CORD ARMOR D10.7) FOR CHN                        |
|          |          |  |  |               |   |
|          |          |  |  |               |   |
|          |          |  |  |               |   |
|          |          |  |  |               |   |
|          |          |  |  |               |   |
|          |          |  |  |               |   |
|          |          |  |  |               |   |
|          |          |  |  |               |   |
|          |          |  |  |               |   |
|          |          |  |  |               |   |
|          |          |  |  |               |   |
|          |          |  |  |               |   |
|          |          |  |  |               |   |
|          |          |  |  |               |   |
|          |          |  |  |               |   |
|          |          |  |  |               |   |
|          |          |  |  |               |   |

# STANDARD ACCESSORIES

| ITEM NO. | CODE NO. | DESCRIPTION   | NO. USED | REMARKS      |
|----------|----------|---------------|----------|--------------|
| 501      | 937-913Z | WRENCH        | 1        |              |
| * 502    | 937-917Z | WHEEL NUT (B) | 1        | FOR AUS, NZL |
|          |          |               |          |              |
|          |          |               |          |              |
|          |          |               |          |              |
|          |          |               |          |              |
|          |          |               |          |              |
|          |          |               |          |              |
|          |          |               |          |              |
|          |          |               |          |              |
|          |          |               |          |              |
|          |          |               |          |              |
|          |          |               |          |              |
|          |          |               |          |              |

# OPTIONAL ACCESSORIES

| ITEM NO. | CODE NO. | DESCRIPTION                          | NO. USED | REMARKS         |
|----------|----------|--------------------------------------|----------|-----------------|
| 601      | 310-337  | SUPER WASHER                         | 1        |                 |
| 602      | 322-141  | PIPE HANDLE                          | 1        |                 |
| 603      | 985-597  | BOLT M14                             | 2        | FOR PIPE HANDLE |
| * 604    | 937-984Z | WHEEL GUARD                          | 1        | FOR USA, CAN    |
| * 605    | 937-911  | SET RING (A)                         | 1        | FOR USA, CAN    |
| * 606    | 949-656  | HEX. SOCKET HD. BOLT M8X20 (10 PCS.) | 2        | FOR USA, CAN    |
| * 607    | 949-457  | SPRING WASHER M8 (10 PCS.)           | 2        | FOR USA, CAN    |
|          |          |                                      |          |                 |
|          |          |                                      |          |                 |
|          |          |                                      |          |                 |
|          |          |                                      |          |                 |
|          |          |                                      |          |                 |
|          |          |                                      |          |                 |
|          |          |                                      |          |                 |
|          |          |                                      |          |                 |
|          |          |                                      |          |                 |
|          |          |                                      |          |                 |
|          |          |                                      |          |                 |
|          |          |                                      |          |                 |
|          |          |                                      |          |                 |
|          |          |                                      |          |                 |
|          |          |                                      |          |                 |
|          |          |                                      |          |                 |
|          |          |                                      |          |                 |
|          |          |                                      |          |                 |
|          |          |                                      |          |                 |
|          |          |                                      |          |                 |
|          |          |                                      |          |                 |
|          |          |                                      |          |                 |
|          |          |                                      |          |                 |
|          |          |                                      |          |                 |
|          |          |                                      |          |                 |
|          |          |                                      |          |                 |
|          |          |                                      |          |                 |
|          |          |                                      |          |                 |
|          |          |                                      |          |                 |
|          |          |                                      |          |                 |
|          |          |                                      |          |                 |
|          |          |                                      |          |                 |
|          |          |                                      |          |                 |
|          |          |                                      |          |                 |
|          |          |                                      |          |                 |
|          |          |                                      |          |                 |
|          |          |                                      |          |                 |
|          |          |                                      |          |                 |
|          |          |                                      |          |                 |
|          |          |                                      |          |                 |
|          |          |                                      |          |                 |