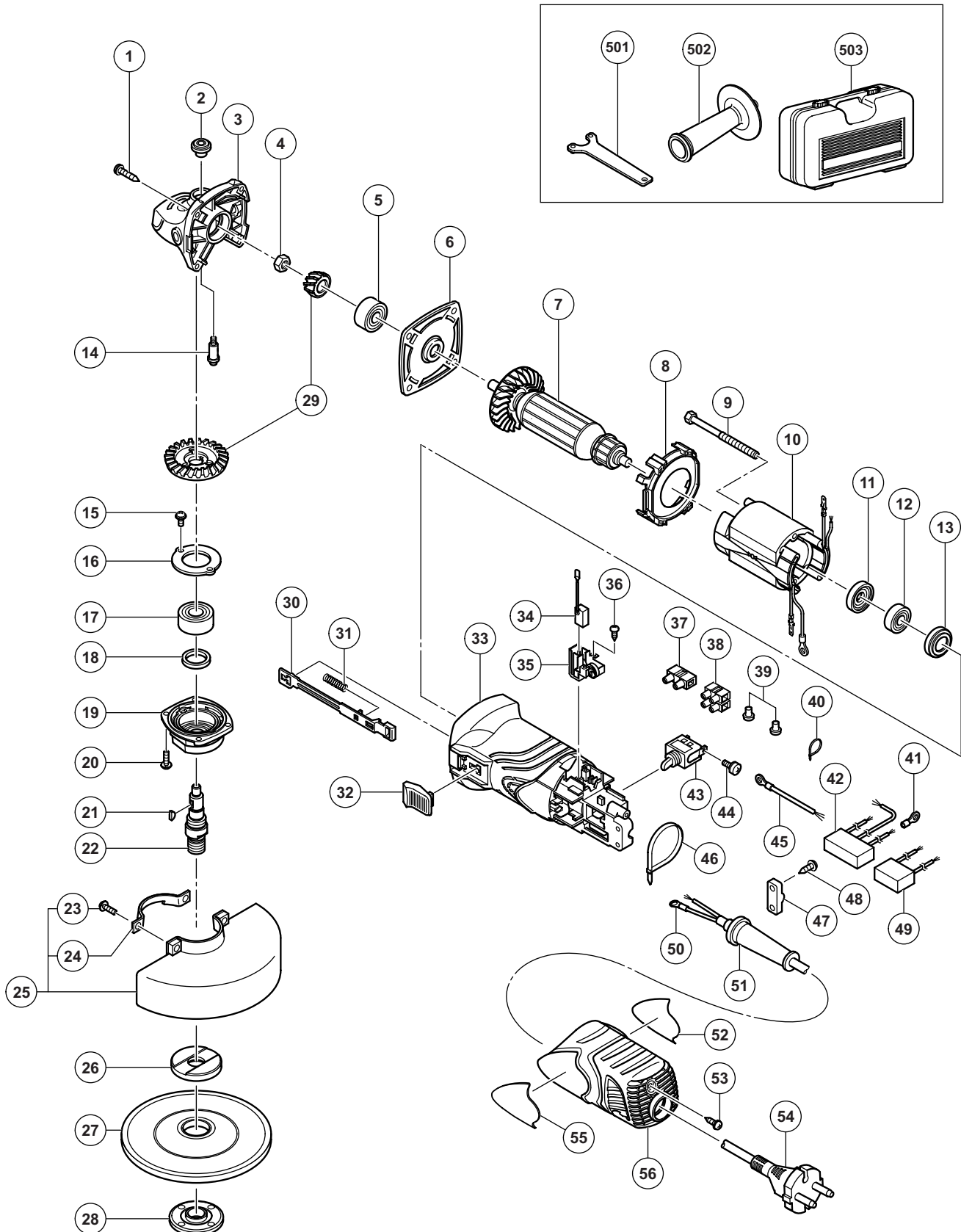


ELECTRIC TOOL PARTS LIST

■ DISC GRINDER
Model G 13SN

2010-12-22
(E1)



PARTS

G 13SN

ITEM NO.	CODE NO.	DESCRIPTION	NO. USED	REMARKS
1	307-028	TAPPING SCREW (W/FLANGE) D4 X 25 (BLACK)	4	
2	301-944	PUSHING BUTTON	1	
3	332-529	GEAR COVER ASS'Y	1	INCLUD. 2, 14
4	309-191	SPECIAL NUT M6	1	
5	628-VVC	BALL BEARING 628VVC2PS2-L	1	
6	327-887	BEARING HOLDER	1	
* 7	360-891C	ARMATURE 110V	1	
* 7	360-891U	ARMATURE ASS'Y 120V	1	INCLUD. 5, 11, 12
* 7	360-891B	ARMATURE 127V	1	
* 7	360-891E	ARMATURE 220V	1	
* 7	360-891F	ARMATURE 230V	1	
* 7	360-891G	ARMATURE 240V	1	
8	327-886	FAN GUIDE	1	
9	982-021	HEX. HD. TAPPING SCREW D4 X 70	2	
* 10	340-791A	STATOR 110V-120V	1	
* 10	340-791B	STATOR 110V	1	FOR TPE, GBR (110V)
* 10	340-791C	STATOR 127V	1	
* 10	340-791D	STATOR 220V	1	
* 10	340-791E	STATOR 220V	1	FOR CHN
* 10	340-791J	STATOR 230V-240V	1	
* 10	340-791K	STATOR 230V-240V	1	FOR SIN, MAL
* 10	340-791H	STATOR 230V-240V	1	FOR IND
11	321-722	DUST SEAL	1	
12	626-VVM	BALL BEARING 626VVC2PS2L	1	
13	309-929	RUBBER BUSHING	1	
14	301-943	LOCK PIN	1	
15	987-201	SEAL LOCK SCREW (W/SP. WASHER) M4 X 10	2	
16	316-490	BEARING COVER	1	
17	620-1VV	BALL BEARING 6201VVCMP2L	1	
18	301-946	FELT PACKING	1	
19	316-489	PACKING GLAND	1	
20	987-203	SEAL LOCK SCREW (W/SP. WASHER) M4 X 12	4	
21	302-047	WOODRUFF KEY	1	
* 22	332-536	SPINDLE	1	
* 22	332-537	SPINDLE	1	FOR USA, CAN
23	308-386	MACHINE SCREW (W/SP. WASHER) M5 X 16(BLACK)	2	
24	301-949	SET PLATE	1	
25	332-539	WHEEL GUARD ASS'Y	1	INCLUD. 23, 24
* 26	937-817Z	WHEEL WASHER	1	
* 26	319-373	WHEEL WASHER	1	FOR USA, CAN
27	316-822	D. C. WHEELS 125MM A36Q (25 PCS.)	1	
* 28	994-324	WHEEL NUT M14	1	
* 28	937-923P	WHEEL NUT 5/8"-11UNC	1	FOR USA, CAN
29	327-888	GEAR SET	1	
30	333-366	SLIDE BAR	1	
31	314-429	SPRING	1	
32	314-428	SLIDE KNOB	1	
33	333-365	HOUSING ASS'Y	1	INCLUD. 13
34	999-005	CARBON BRUSH (1 PAIR)	2	
35	327-895	BRUSH HOLDER	2	

PARTS

G 13SN

ITEM NO.	CODE NO.	DESCRIPTION	NO. USED	REMARKS	
	36	328-210	TAPPING SCREW D3 X 8	4	
*	37	938-307	PILLAR TERMINAL	1	EXCEPT FOR UAE, THA, INA, IND, CHN, HKG, BRA, PAN (220V)
*	38	958-308Z	PILLAR TERMINAL (A)	1	FOR CHN
*	39	959-140	CONNECTOR 50091 (10 PCS.)	1	FOR UAE, THA, INA, IND, AUS, GBR (110V), CHN, HKG, TPE, BRA, PAN (220V)
*	39	959-140	CONNECTOR 50091 (10 PCS.)	2	FOR NZL, GBR (230V), SAF, EUROPE, FIN, NOR, DEN, RUS, AUT, SUI
*	40	975-144	CABLE TIE	1	FOR AUS
*	41	980-063	TERMINAL	2	FOR AUS, GBR (110V), CHN, TPE
*	41	980-063	TERMINAL	1	FOR NZL, GBR (230V), SAF, EUROPE, FIN, NOR, DEN, RUS, AUT, SUI
*	41	930-804	TERMINAL M4.0 (10 PCS.)	1	FOR NZL, GBR (230V), SAF, EUROPE, FIN, NOR, DEN, RUS, AUT, SUI
*	42	317-491	NOISE SUPPRESSOR	1	FOR AUS, NZL, GBR, SAF, EUROPE, FIN, NOR, DEN, RUS, AUT, SUI, CHN, TPE
	43	314-603	SWITCH (1P SOLDER TYPE)	1	
	44	305-499	MACHINE SCREW (W/WASHER) M3.5 X 6	2	
*	45	332-545	INTERNAL WIRE	1	FOR AUS, NZL, GBR, SAF, EUROPE, FIN, NOR, DEN, RUS, AUT, SUI, CHN, TPE
*	46	988-054	CABLE TIE	1	FOR AUS
	47	937-631	CORD CLIP	1	
	48	984-750	TAPPING SCREW (W/FLANGE) D4 X 16	2	
*	49	930-039	NOISE SUPPRESSOR	1	FOR NZL, GBR (230V), SAF, EUROPE, FIN, NOR, DEN, RUS, AUT, SUI
	50	980-063	TERMINAL	1	
*	51	953-327	CORD ARMOR D8.8	1	
*	51	938-051	CORD ARMOR D10.1	1	
	52		NAME PLATE	1	
	53	307-811	TAPPING SCREW (W/FLANGE) D4 X 16 (BLACK)	1	
*	54	500-409Z	CORD	1	(CORD ARMOR D8.8)
*	54	500-436Z	CORD	1	(CORD ARMOR D8.8)
					FOR GBR (230V), SIN, MAL, HKG
*	54	500-247Z	CORD	1	(CORD ARMOR D8.8) FOR FIN, NOR, DEN
*	54	500-240Z	CORD	1	(CORD ARMOR D8.8)
*					FOR USA, CAN, PAN (120V)
*	54	500-439Z	CORD	1	(CORD ARMOR D8.8) FOR AUS, NZL
*	54	500-468Z	CORD	1	(CORD ARMOR D8.8) FOR THA, CHN
*	54	500-461Z	CORD	1	(CORD ARMOR D8.8) FOR GBR (110V)
*	54	500-201Z	CORD	1	(CORD ARMOR D10.1) FOR UAE
*	54	500-447Z	CORD	1	(CORD ARMOR D8.8) FOR SUI
*	54	323-974	CORD	1	(CORD ARMOR D10.1) FOR TPE
*	54	500-487Z	CORD	1	(CORD ARMOR D8.8) FOR BRA
	55		HITACHI LABEL	1	
	56	327-894	TAIL COVER	1	

STANDARD ACCESSORIES

G 13SN

ITEM NO.	CODE NO.	DESCRIPTION	NO. USED	REMARKS
501	938-332Z	WRENCH	1	
* 502	302-142	SIDE HANDLE	1	
* 502	318-312	SIDE HANDLE	1	FOR USA, CAN
* 503	319-375	CASE	1	FOR AUS, NZL, GBR, EUROPE, FIN, NOR, DEN, RUS

OPTIONAL ACCESSORIES

ITEM NO.	CODE NO.	DESCRIPTION	NO. USED	REMARKS
601	314-062	SANDING DISCS 125MM C-P16 (10 PCS.)	1	
602	314-063	SANDING DISCS 125MM C-P20 (10 PCS.)	1	
603	314-064	SANDING DISCS 125MM C-P24 (10 PCS.)	1	
604	314-065	SANDING DISCS 125MM C-P30 (10 PCS.)	1	
605	314-066	SANDING DISCS 125MM C-P36 (10 PCS.)	1	
606	314-067	SANDING DISCS 125MM C-P40 (10 PCS.)	1	
607	314-068	SANDING DISCS 125MM C-P50 (10 PCS.)	1	
608	314-069	SANDING DISCS 125MM C-P60 (10 PCS.)	1	
609	314-070	SANDING DISCS 125MM C-P80 (10 PCS.)	1	
610	314-071	SANDING DISCS 125MM C-P100 (10 PCS.)	1	
611	314-072	SANDING DISCS 125MM C-P120 (10 PCS.)	1	
* 612	937-826Z	WASHER NUT	1	
* 612	938-318	WASHER NUT	1	FOR USA, CAN
* 613	937-825Z	RUBBER PAD	1	
* 613	938-317	RUBBER PAD	1	FOR USA, CAN