



*RS8000E Gasoline  
Portable Generator  
Parts Manual  
Model: G0079510*

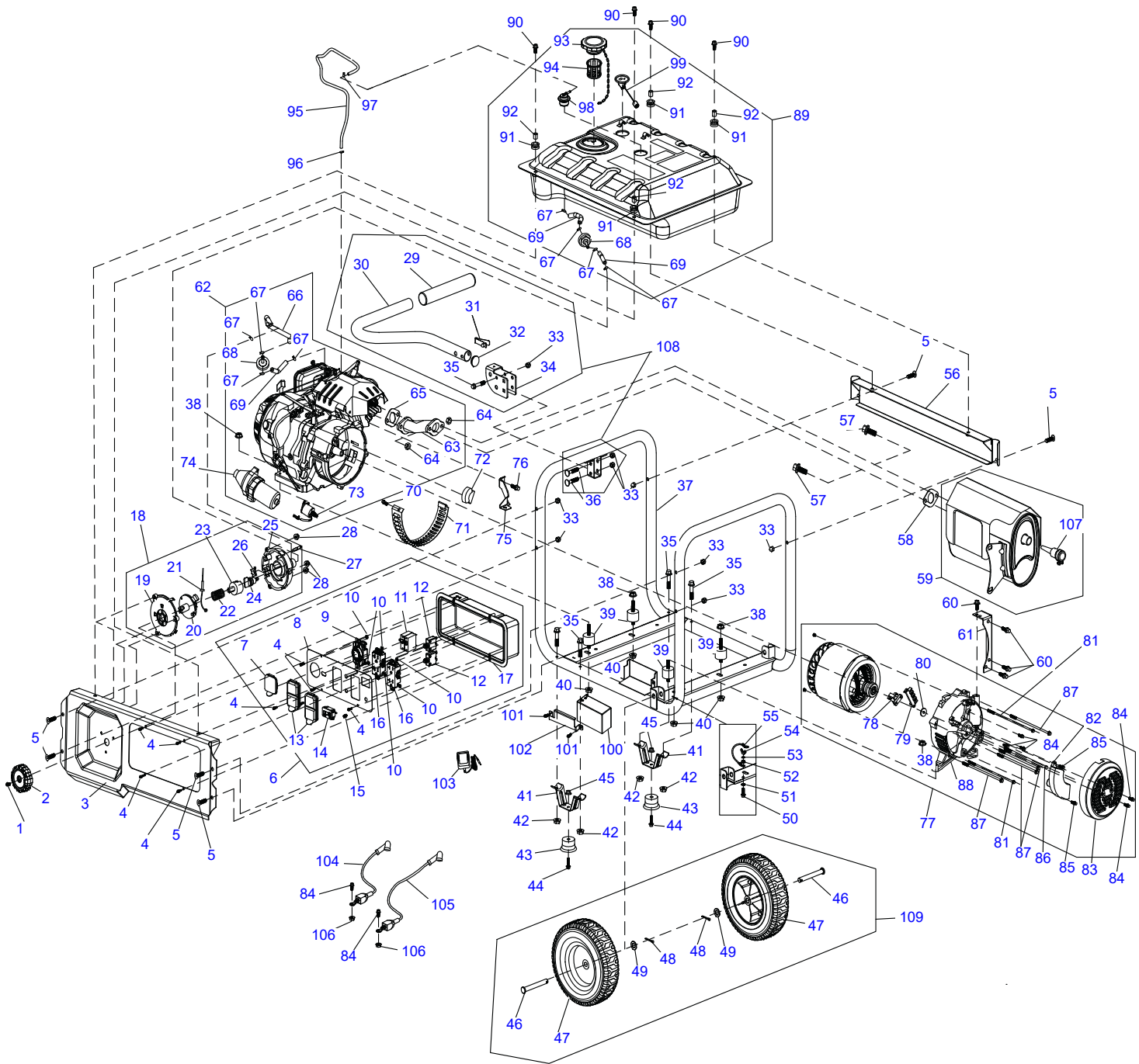
 **WARNING**

**CANCER AND REPRODUCTIVE HARM**

[www.P65Warnings.ca.gov](http://www.P65Warnings.ca.gov)

(000393a)

The information in this manual is known to be accurate as of the date of release shown on the cover. However, engineering changes can occur without notice. To obtain the proper parts, be sure to use the serial number of the unit being serviced when ordering from this manual. Always refer to any part notes and changes before ordering. All other parts not shown in the manual can be found on Generac's exploded view drawings at [www.generac.com](http://www.generac.com) or by contacting your local authorized dealer.



009358

Item	Part No.	Description	Qty.
1	0J79090111	SCREW, PLATE (M5X10MM)	1
2	0K6452	KNOB, SELECTOR	1
3	0K62210ST19	RAIL, FRAME	1
4	0H91980159	SCREW, PAN HEAD (M5X16MM)	8
5	0H1780	BOLT, CURVED HEAD (M8X40MM)	6
6	A0000142860	PANEL, CONTROL ASSEMBLY	1
7	0G9391	COVER, RECEPTACLE	1
8	0K7071	PLATE, CONTROL PANEL FACE	1
9	0G8758	RECEPTACLE	1
10	0J86620108	NUT (M4)	6
11	0G9023B	BREAKER, CIRCUIT 25A	1
12	0H0265C	BREAKER, CIRCUIT 20A	2
13	0G9392	COVER, RECEPTACLE	2
14	0G8321	METER, HOUR	1
15	0J4959	INPUT, 12VDC CHARGER ASSEMBLY	1
16	0D4968	RECEPTACLE (5-20R 120V 20A DUPLEX)	2
17	0G9756A	COVER, CONTROL PANEL BACK	1
18	0K6451	SWITCH, COMBINATION	1
19	0K6343	COVER, POWER DIAL	1
20	0K6447	SHAFT, POWER DIAL	1
21	0K6457	CABLE, POWER DIAL	1
22	0K6463	SPRING, COMPRESSION	1
23	0K6448	ADAPTER, POWER DIAL	1
24	0K7078	VALVE, FUEL SHUT OFF	1
25	0K6343	COVER, POWER DIAL	1
26	0K65100114	SWITCH, MICRO	1
27	0K65100115	SWITCH, MICRO	1
28	10000021871	NUT (M6)	3
29	0G8442C113	GRIP, HANDLE	1
30	0H97560ES03	HANDLE	1
31	0J5347	BUTTON, SNAP	1
32	0H9760	CAP, END	1
33	0H1782	NUT, LOCKING CAP (M8) (BLACK ZINC)	9
34	0H97670ST15	BRACKET, HANDLE	1
35	G073144	BOLT (M8X45MM)	5
36	0H1781	BOLT, CARRIAGE HEAD (M8X46MM)	2
37	10000046569	FRAME	1

Item	Part No.	Description	Qty.
38	0G84420107	NUT (M10)	4
39	0K09150110	MOUNT, RUBBER VIBRATION	4
40	0K22930127	NUT (M8)	4
41	0K00970ST03	FRAME, BENT FOOT	2
42	0K0098	NUT (M8)	4
43	A0000142866	FOOT, RUBBER	2
44	0K0100	BOLT (M6X28MM)	2
45	0K0105	NUT (M6)	2
46	0H0204	PIN, AXLE	2
47	0L1366	WHEEL	2
48	10000035957	PIN, COTTER	2
49	10000035961	WASHER	2
50	0J35220156	BOLT (M6X20MM)	1
51	0K0093	WASHER	1
52	10000021871	NUT (M6)	1
53	0J47870118	WASHER	1
54	0K0094	NUT, BUTTERFLY(M6)	1
55	0K20670114	WIRE, GROUND ASSEMBLY	1
56	0H9749AST19	PANEL, RAIL BACK	1
57	0E9507B	BOLT (M8X25MM)	2
58	0J4691	GASKET, MUFFLER EXHAUST	1
59	A0000142879	MUFFLER	1
60	0E9470	BOLT (M8X16MM)	4
61	0J97760112	BRACKET, MUFFLER	1
62	A0000142869	ENGINE 420FDA 420CC	1
63	0J4535A	MANIFOLD, EXHAUST	1
64	0J35220161	NUT (M8)	2
65	0G9028	GASKET, CYLINDER EXHAUST	1
66	0K65110117	HOSE, FUEL	1
67	0H9838C110	CLAMP, HOSE Ø12	8
68	0K65110118	FILTER, FUEL	2
69	0K65110119	HOSE, FUEL (Ø12.7X75)	3
70	0J00620100	BOLT (M5X10MM)	1
71	0H9761	SCROLL, ALTERNATOR	1
72	0J86620104	BAFFLE	1
73	0H98380102	CONTACTOR ASSEMBLY	1
74	0H98380101	MOTOR, STARTER	1
75	10000035982	BRACKET, AIR CLEANER	1
76	0G84420194	BOLT (M6X12MM)	3
77	10000047237	ALTERNATOR ASSEMBLY	1
78	0H0919	BRUSH, ALTERNATOR	1
79	0J83630111	TERMINAL, WIRE	1

Item	Part No.	Description	Qty.
80	0J86620102	WASHER, FLAT (M10X4MM)	1
81	0H9838C112	BOLT(M5X232MM)	2
82	0H91980178	REGULATOR, AUTOMATIC VOLTAGE	1
83	10000028206	COVER, GENERATOR END	1
84	0J4967	BOLT (M5X12MM)	8
85	0J4968	BOLT (M5X16MM)	3
86	0H92090104	BOLT, ROTOR (M10X285MM)	1
87	0H92090105	BOLT, STATOR (M6X191MM)	4
88	0H91980171	CARRIER, REAR BEARING	1
89	A0000142874	TANK, FUEL ASSEMBLY COMPLETE	1
90	0E9507C	BOLT (M8X20MM)	4
91	10000028235	GROMMET, FUEL TANK RUBBER	4
92	10000028208	INSERT, ANTI-CRUSH	4
93	0H0958A	CAP, FUEL	1
94	10000035980	FILTER, FUEL	1
95	0K65100112	HOSE, PREFORMED FUEL	1
96	0H9838C110	CLAMP, HOSE Ø12	1
97	0J35220174	CLAMP, HOSE Ø10	1
98	0J7921	VALVE, ROLL OVER	1
99	0K09150113	GAUGE, FUEL	1
100	10000007800	BATTERY	1
101	0G84420194	BOLT (M6X12MM)	3
102	0J06940ST03	BRACKET, BATTERY COVER	1
103	0G5744	CHARGER, BATTERY	1
104	0J4157B	CABLE, POSITIVE BATTERY	1
105	0J4157A	CABLE, NEGATIVE BATTERY	1

Item	Part No.	Description	Qty.
106	0H3535	NUT (M5)	2
107	0J5207C110	ARRESTOR, SPARK	1
108	A0000143588	KIT, HANDLE	1
109	A0000057425	KIT, WHEEL	1
N/S	A0000143591	COVER, INLINE FUSE	1
N/S	0K3030	HOLDER, INLINE FUSE	1

Note: For engine parts information, see engine parts manual

**A0000206850**

N/S = Not Shown

Part No. 10000046957Rev. A 08/08/2019

©2019 Generac Power Systems, Inc.

All rights reserved

Specifications are subject to change without notice.

No reproduction allowed in any form without prior written consent from Generac Power Systems, Inc.

**GENERAC®**



Generac Power Systems, Inc.

S45 W29290 Hwy. 59

Waukesha, WI 53189

1-888-GENERAC (1-888-436-3722)

[www.generac.com](http://www.generac.com)