



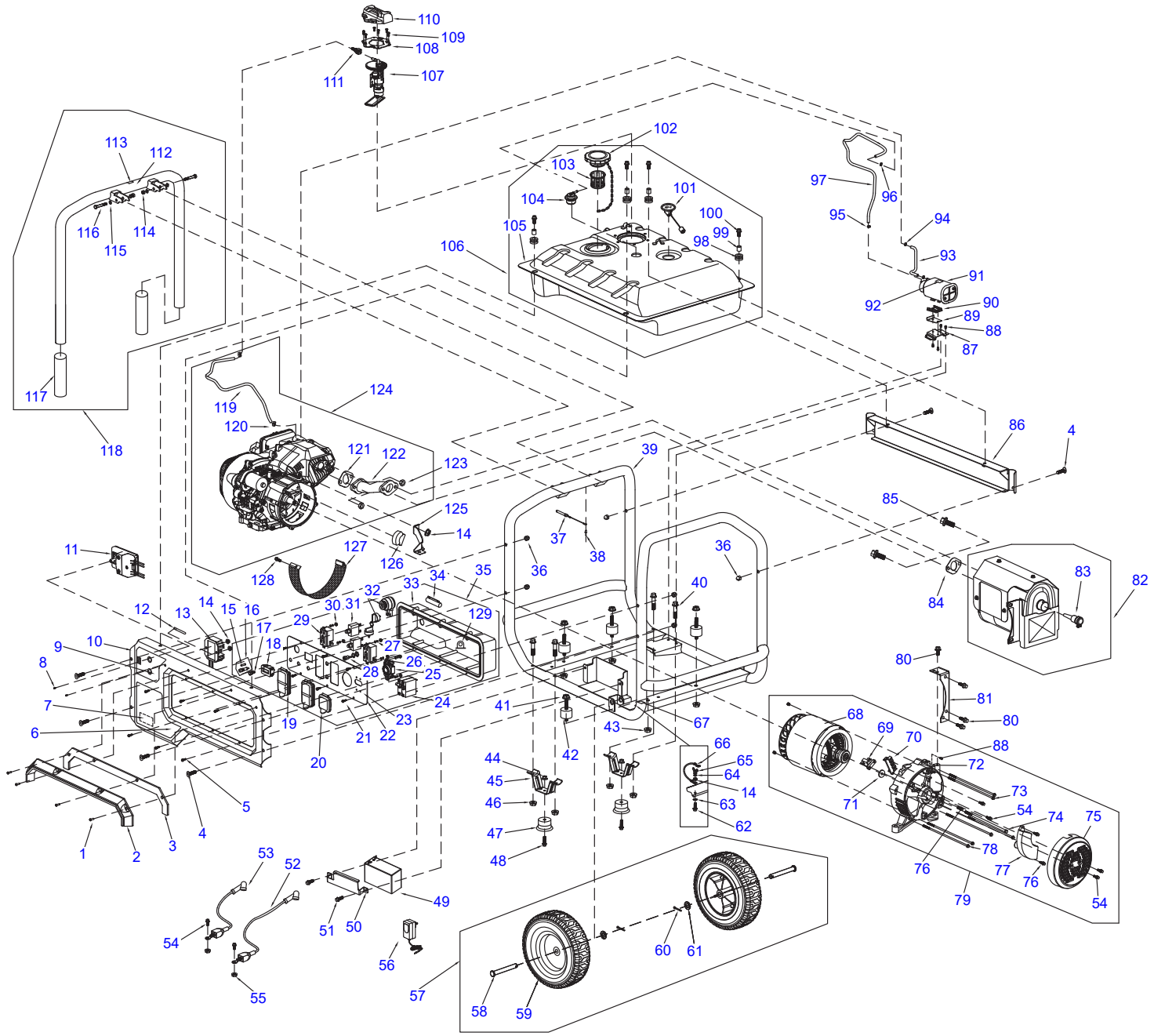
XT8500EFI Portable Generator

Parts Manual

Model No. G0072470

The information in this manual is known to be accurate as of the date of release shown on the cover. However, engineering changes can occur without notice. To obtain the proper parts, be sure to use the serial number of the unit being serviced when ordering from this manual. Always refer to any part notes and changes before ordering. All other parts not shown in the manual can be found on Generac's exploded view drawings at www.generac.com or by contacting your local authorized dealer.

www.generac.com or 1-888-GENERAC



QUICK REFERENCE GUIDE

Engine Size	Fuel	Engine Part No.
459CC	GASOLINE	A0000310667

QUICK REFERENCE PARTS

Description	Part No.	Special Notes
Air Filter Element	A0000921093	
Spark Plug	0K20670117	

ITEM	PART NO.	DESCRIPTION	QTY
1	10000028165	SCREW (M6X25MM)	4
2	10000028184	VISOR, PLASTIC	1
3	10000028166	VISOR, GASKET	1
4	0H1780	BOLT, CURVED HEAD (M8X1.25X41MM)	6
5	10000028174	SCREW, PAN HEAD (M4.8X16MM)	6
6	N/A	DECAL, MODEL	1
7	N/A	DECAL, NAMEPLATE	1
8	10000031512	SCREW, TORX (M5.5-1.59X15)	2
9	N/A	DECAL, CAUTION	1
10	A0000317783	SIDE PANEL, CONTROL	1
11	A0000293367	CO-SENSE MODULE EFI	1
12	A0000698515	CLAMP, CABLE	1
13	10000028169	RECTIFIER	1
14	10000021871	NUT (M6)	4
15	0D7178Z	FUSE-5A	1
16	10000028118	HOLDER, FUSE	1
17	10000028167	LAMP, RED	1
18	0G8321	METER, HOUR	1
19	0G9392	COVER, OUTLET 120V	2
20	0G9391	COVER, OUTLET 120/240V	1
21	0H91980159	SCREW, PAN ST4X16MM	6
22	A0000355174	FACEPLATE	1
23	N/A	DECAL, FACEPLATE	1
24	10000028202	CB 30A	1

ITEM	PART NO.	DESCRIPTION	QTY
25	0K95240111	RECEPTACLE, L14-30R	1
26	A0000698518	WASHER	6
27	G043180	WASHER, FLAT M4	6
28	0J4959	CHARGER, ASSY 12VDC INPUT	1
29	10000028117	RECEPTACLE, GFCI	2
30	0J86620108	NUT (M4)	6
31	0H0265C	CB 20A 1P	2
32	A0000181523	SWITCH, ENGINE	1
33	10000028155	COVER, BACK PANEL	1
34	A0000698520	FUSE-3A	1
35	A0000310072	ASSY, CONTROL PANEL W/CO	1
36	0H1782	CAP NUT, M8-1.25	6
37	0K3399	PIN, QUICK RELEASE	1
38	N/A	RIVET	1
39	A0000355168	CRADLE ASSEMBLY	1
40	G073144	BOLT (M8X45MM)	4
41	0J4029	NUT, HEX FL (M10-1.25)	4
42	0K09150110	MOUNT, RUBBER VIBRATION	4
43	0K22930127	NUT (M8)	4
44	0K0105	NUT (M6)	2
45	0K00970ST03	BRACKET, FOOT	2
46	0K0098	NUT (M8)	4
47	0K0099	ISOLATOR, FOOT	2
48	0K0100	BOLT (M6X28MM)	2
49	10000007800	BATTERY (9AH)	1
50	10000028286	COVER, BATTERY	1
51	0G84420194	BOLT (M6X12MM)	2

ITEM	PART NO.	DESCRIPTION	QTY
52	0J4157A	WIRE ASSY, BATT NEG, GREEN	1
53	0J4157B	WIRE ASSY, BATT POS, RED	1
54	0J4967	BOLT (M5X12MM)	8
55	0H3535	NUT (M5)	2
56	10000020426	CHARGER, AC ADAPTOR	1
57	A0000698522	KIT, WHEEL	1
58	0H0204	PIN, AXLE	2
59	0K6011	WHEEL, 9.5 DIA	2
60	10000007707	PIN, COTTER	2
61	10000035961	WASHER, FLAT	2
62	0J35220156	BOLT (M6X20MM)	1
63	0K0093	WASHER, LOCK ID-6MM OD-12MM	1
64	0J47870118	WASHER, FLAT 13x2	1
65	0K0094	NUT (M6)	1
66	0K20670114	ASSEMBLY, GROUND WIRE	1
67	N/A	DECAL, GROUND	1
68	10000028197	ALTERNATOR	1
69	0H0919	BRUSH, ALTERNATOR	1
70	0J83630111	TERMINAL	1
71	0J86620102	WASHER, FLAT (M10X4MM)	1
72	0H91980171	CARRIER, REAR BEARING	1
73	0H9838C112	BOLT (M5X232MM)	2
74	0H92090104	BOLT, ROTOR (M10X285MM)	1
75	10000028206	COVER, GENERATOR END	1
76	0J4968	BOLT (M5X16MM)	3
77	0H91980178	REGULATOR, AVR	1
78	0H92090105	BOLT, STATOR (M6X193MM)	4
79	0L0566	ALTERNATOR ASSEMBLY	1
80	0E9470	BOLT (M8X20MM)	4
81	0J97760112	BRACKET, MUFFLER	1
82	10000028260	MUFFLER	1
83	A0000181524	ARRESTOR, SPARK	1

ITEM	PART NO.	DESCRIPTION	QTY
84	10000028234	GASKET, MUFFLER EXHAUST	1
85	0E9507B	BOLT(M8X25MM)	2
86	10000028253	RAIL, BACK	1
87	0J1962	BRKT, FRAME TO CARBON CANISTER	1
88	0H58410163	BOLT (M6X12MM)	5
89	0J19610ST03	BRKT, CARBON CANISTER STOP	1
90	0J47650ST03	BRKT, CARBON CANISTER MOUNT	1
91	0H0957	CANISTER, CARBON (682CC)	1
92	N/A	DECAL, CAUTION	1
93	0K18360110	TUBE, BREATHER, CARBON CANISTER	1
94	0J35220174	CLAMP	1
95	0K97920112	CLAMP, HOSE	2
96	0J88870130	CLAMP/COLLAR	1
97	10000028207	FORMED HOSE	1
98	10000028235	MOUNT, FUEL TANK RUBBER	4
99	10000028208	ANTI-CRUSH INSERTS	4
100	0E9507C	BOLT (8X20MM)	4
101	0K09150113	GAUGE, FUEL	1
102	0H0958	CAP, FUEL	1
103	10000035980	FILTER, FUEL	1
104	10000028261	VALVE, ROLL OVER	1
105	ORDER ITEM 106	TANK, FUEL	1
106	A0000698525	ASSEMBLY, FUEL TANK W/DECALS	1
107	10000028257	PUMP, FUEL	1
108	10000028256	CLAMP	1
109	0J79090111	SCREW,PAN (M5X10MM)	6
110	10000028255	COVER, FUEL PUMP	1
111	10000028743	CONNECTOR, QUICK CHANGE	1
112	ORDER ITEM 118	TUBE, HANDLE	1
113	N/A	DECAL, CAUTION	1
114	10000028262	NUT (M8)	2
115	10000028280	WASHER, FLAT	4
116	10000028242	BOLT(M8X55MM)	2

ITEM	PART NO.	DESCRIPTION	QTY
117	10000031500	GRIP, HANDLE	2
118	A0000698529	HANDLE ASSEMBLY	1
119	10000028237	HOSE, FORMED FUEL	1
120	A0000181527	CLAMP	2
121	0G9028	GASKET, EXHAUST	1
122	10000026982	MANIFOLD, EXHAUST	1
123	0J35220161	NUT, HEX (M8)	2
124	A0000310667	ENGINE, 459CC EFI- OL ES	1
125	10000007686	BRACKET, AIR CLEANER	1
126	0J86620104	BAFFLE	1
127	10000028273	COVER, DUST	1
128	0J00620100	BOLT (M5X10MM)	1
129	A0000698532	TRANSFORMER, CURRENT	1

NOTE: To order replacement engine parts, see manual A0000318956.

NOTE: N/A = part is not available.