



iQ3500 Portable Generator

Parts Manual

Model G0071270

 **WARNING**

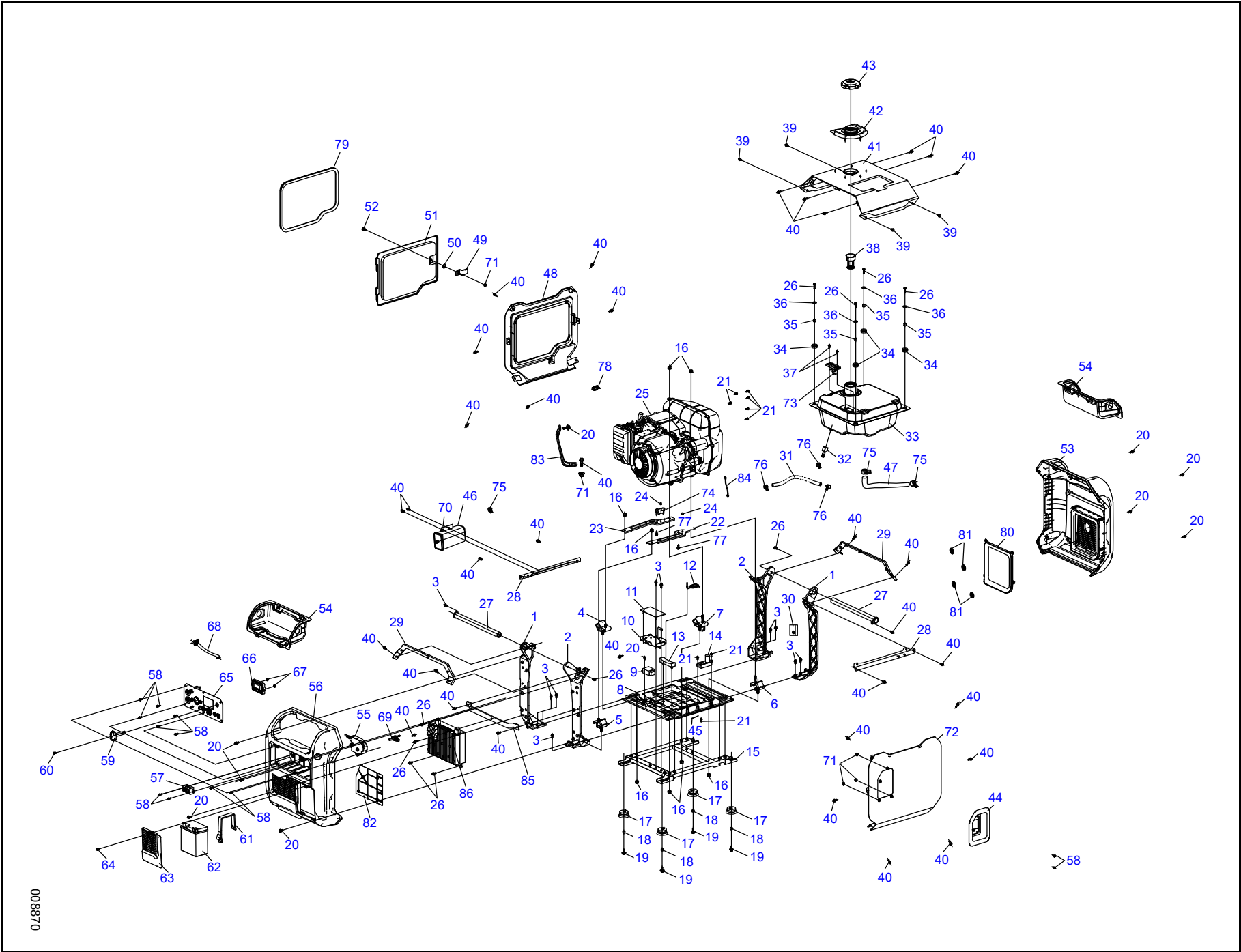
CANCER AND REPRODUCTIVE HARM

www.P65Warnings.ca.gov

(000393a)

The information in this manual is known to be accurate as of the date of release shown on the cover. However, engineering changes can occur without notice. To obtain the proper parts, be sure to use the serial number of the unit being serviced when ordering from this manual. Always refer to any part notes and changes before ordering. All other parts not shown in the manual can be found on Generac's exploded view drawings at www.generac.com or by contacting your local authorized dealer.

www.generac.com or 1-888-GENERAC



008870

ITEM	PART NO.	DESCRIPTION	QTY
1	10000038332	STANDING FRAME SUPPORT	2
2	10000038323	STANDING FRAME SUPPORT	2
3	0J35240145	FLANGE BOLT (M8X20MM)	10
4	10000038313	FRONT RIGHT VIBRATION MOUNT	1
5	10000038277	FRONT LEFT VIBRATION MOUNT	1
6	10000038296	REAR LEFT VIBRATION MOUNT	1
7	10000038297	REAR RIGHT VIBRATION MOUNT	1
8	10000038305	MOUNTING BASE	1
9	10000038333	CHARGER	1
10	10000038288	BATTERY CASE	1
11	10000038289	BATTERY PAD	1
12	10000038268	RUBBER PLUG	1
13	10000038278	RUBBER BUFFER	1
14	10000038269	IGNITION DEVICE	1
15	10000038340	FRAME BASE	1
16	0K22930127	FLANGE NUT	8
17	10000038335	FOOT SHOCK ABSORBERS	4
18	10000021860	BUSHING	4
19	10000021818	FLANGED BOLT	4
20	10000024655	FLANGED BOLT (M6X16MM)	9
21	10000021809	TAPPING SCREW(ST4.0X15MM)	9
22	10000022154	ENGINE SUPPORT PLATE (LEFT)	1
23	10000022127	ENGINE SUPPORT PLATE (RIGHT)	1
24	0J35220165	DOWEL PIN	2
25	10000033856	ENGINE ASSEMBLY	1
26	0G84420268	FLANGE BOLT	10
27	10000038350	TUBE HANDLE	2
28	10000038351	FUEL TANK MOUNTING BRACKET	2
29	10000038315	BACK RAIL STRUT	2
30	10000038361	BUFFER BLOCK	1
31	10000038326	FUEL LINE	1
32	10000022270	FUEL CONNECTOR	1
33	10000038343	FUEL TANK	1
34	0J4606	RUBBER MOUNT	4
35	0H1610A	ANTI-CRUSH INSERT	4
36	10000022202	FLAT WASHER	4

ITEM	PART NO.	DESCRIPTION	QTY
37	10000007709	CROSS HEAD SCREW (M5X16)	2
38	10000038353	FUEL STRAINER (IN TANK)	1
39	10000038344	BUMPER BLOCK	4
40	0G84420194	FLANGE BOLT (M6X12MM)	33
41	10000038328	TOP COVER ENCLOSURE	1
42	10000038354	FUEL SPILL PROTECTOR	1
43	10000038355	FUEL CAP	1
44	10000038316	ROPE PULL GUARD	1
45	10000038317	BAND (ZIP TIE)	1
46	10000038329	CARBON CANISTER	1
47	10000038380	VAPOR HOSE	1
48	10000038371	SERVICE SIDE PANEL	1
49	10000038381	DOOR LOCK	1
50	10000038382	WASHER	1
51	10000038345	SERVICE DOOR	1
52	10000038363	BUTTON HEAD SCREW	1
53	10000038383	REAR EXHAUST PANEL	1
54	10000038364	HANDLE GUARD PANEL	2
55	10000038384	COMBINATION SWITCH	1
56	10000038385	FRONT ENCLOSURE PANEL	1
57	10000021976	TERMINAL BLOCK	1
58	10000021873	SCREW (M5X12MM)	12
59	10000038390	ON/OFF/CHOKE KNOB	1
60	10000021895	SCREW (M4X18MM)	1
61	10000038318	BATTERY STRAP	1
62	10000038386	BATTERY	1
63	10000038391	BATTERY ACCESS PANEL	1
64	10000021845	SCREW	1
65	10000038365	CONTROL PANEL ASSEMBLY	1
66	10000038372	HOUR METER	1
67	0J86620108	NUT (M4)	2
68	10000038373	WIRE HARNESS	1
69	10000022123	FUEL SWITCH	1
70	10000038392	CARBON CANISTER BRACKET	1
71	10000021871	NUT (M6)	5

ITEM	PART NO.	DESCRIPTION	QTY
72	10000038367	SIDE ENCLOSURE PANEL	1
73	10000038368	FUEL LEVEL SENSOR	1
74	10000038393	SHEATH	1
75	0H9838C110	CLAMP	3
76	0J88870130	COLLAR CLAMP	3
77	0G84420201	FLANGE BOLT	2
78	10000038402	RUBBER GROMMET	1
79	10000038346	SERVICE DOOR SEAL	1
80	10000038369	EXHAUST SHIELD	1
81	10000022176	WASHER, LOCK	4
82	10000038348	AIR INLET GUIDE PLATE	1
83	10000038412	AIR CLEANER BRACKET	1
84	10000038413	GROUND WIRE	1
85	10000038844	INVERTER BRACKET	1
86	10000038856	INVERTER ASSEMBLY	1

NOTE: To order replacement engine parts, see manual 10000038555.

Part No. 10000037453 Rev. C 04/01/2020
 ©2020 Generac Power Systems, Inc.
 All rights reserved
 Specifications are subject to change without notice.
 No reproduction allowed in any form without prior written
 consent from Generac Power Systems, Inc.



Generac Power Systems, Inc.
 S45 W29290 Hwy. 59
 Waukesha, WI 53189
 1-888-GENERAC (1-888-436-3722)
www.generac.com