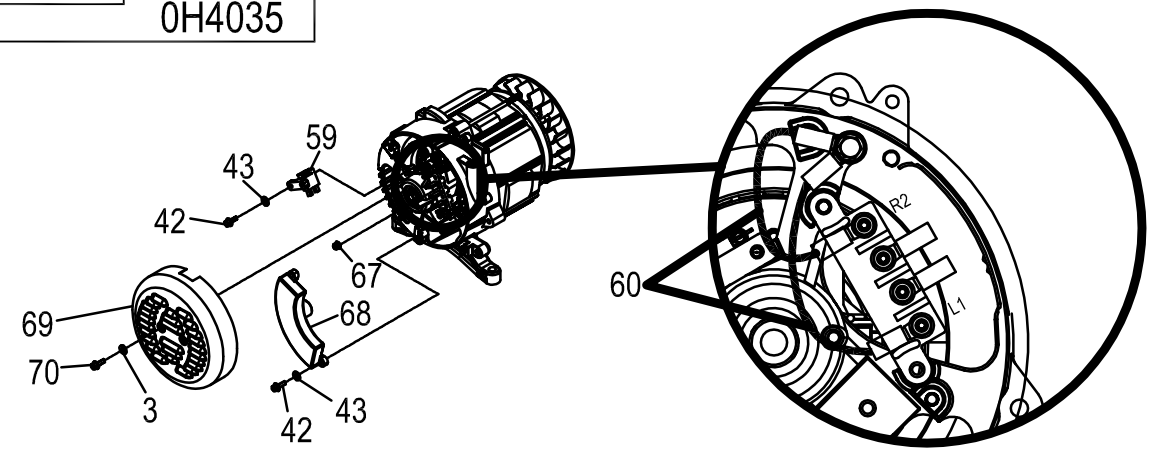
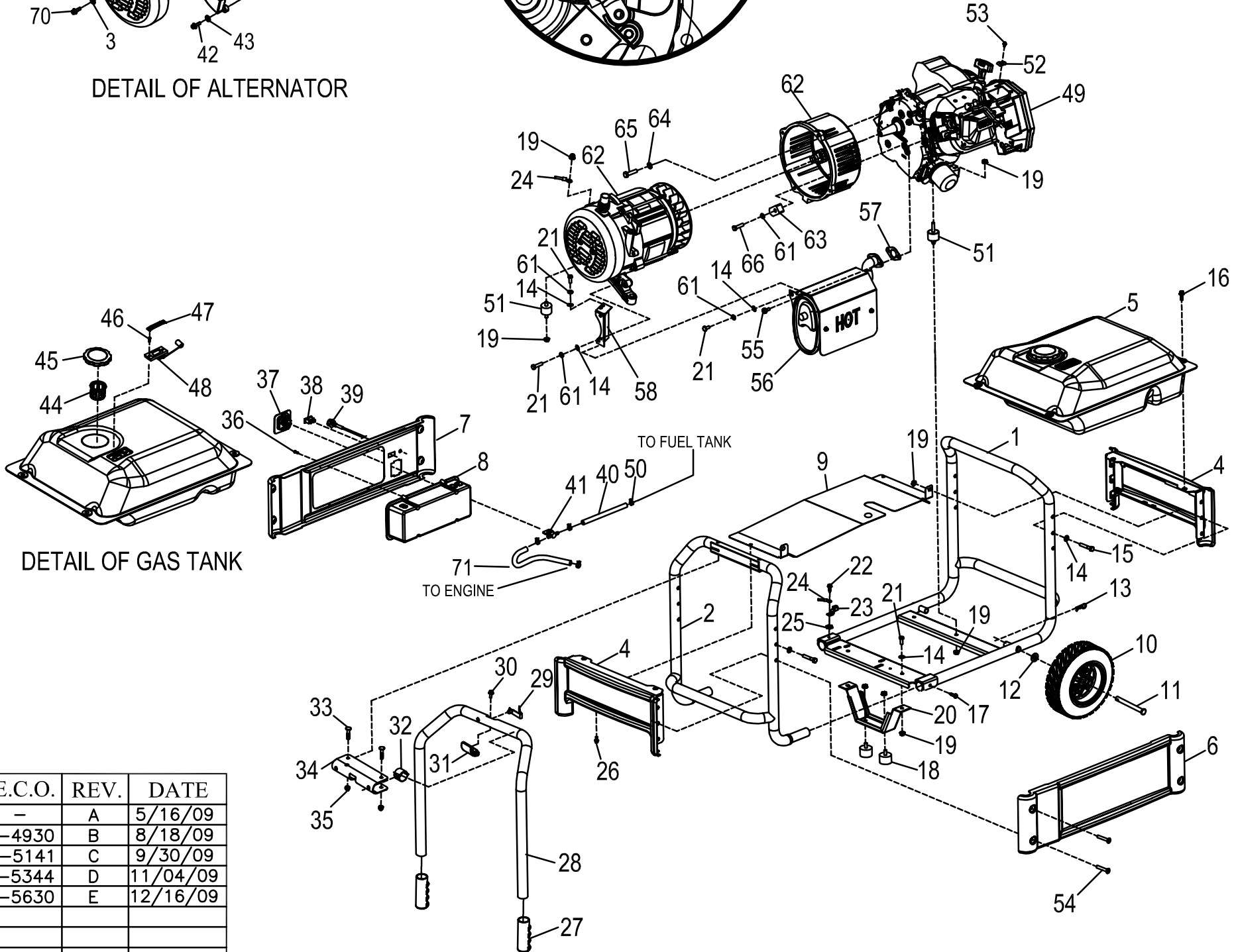


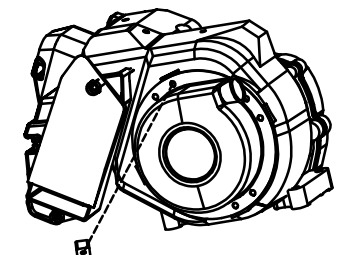
PART NO. 0H4035



DETAIL OF ALTERNATOR



DETAIL OF GAS TANK



ROUTE HOSE THROUGH CLIP
DETAIL OF FRONT OF ENGINE

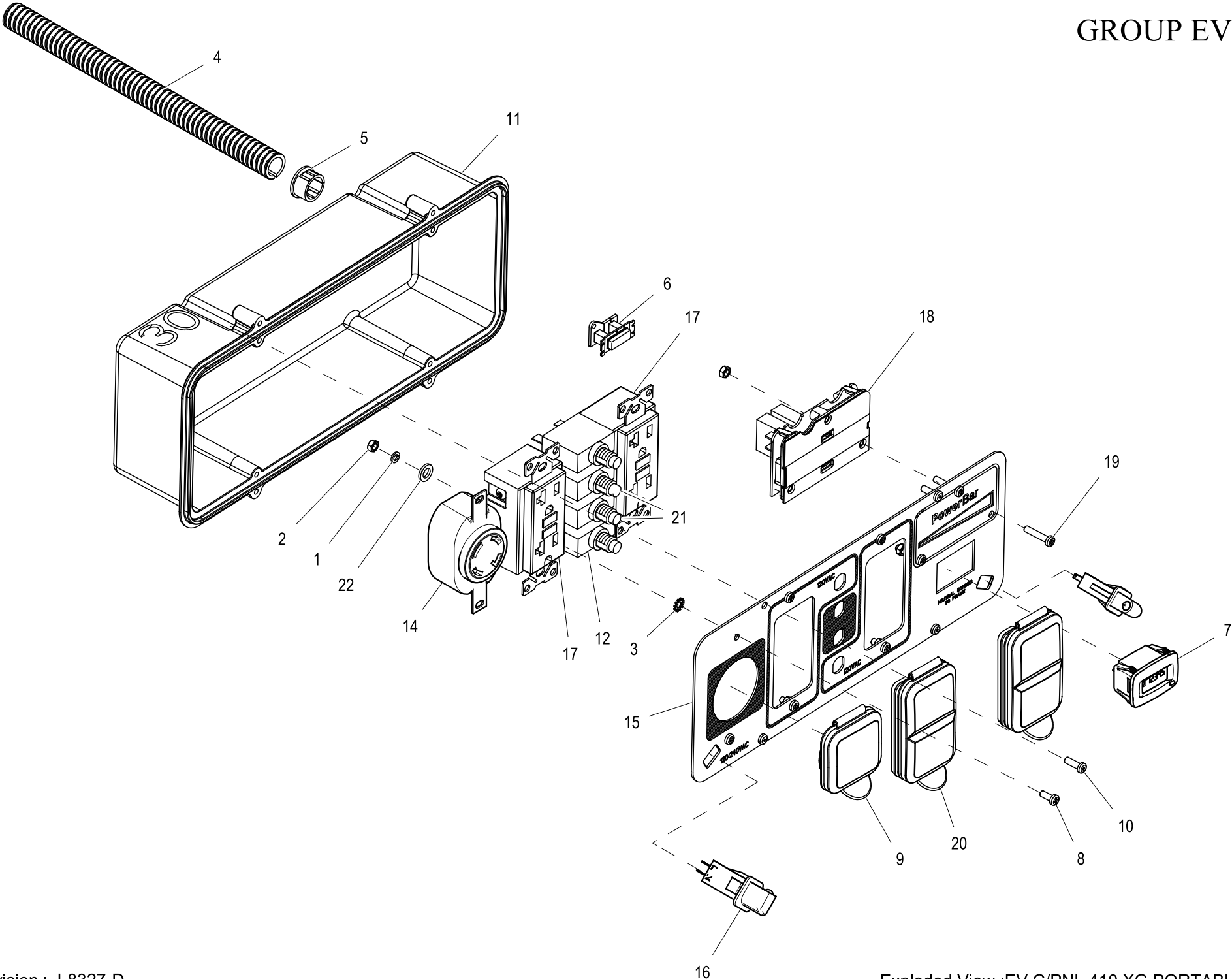
ITEM	PART #	QTY.	DESCRIPTION	ITEM	PART #	QTY.	DESCRIPTION
1	0H2385	1	FRAME BASE	62	0H863	1	7WV ALTERNATOR WJUMPERWIRES
2	0H2391	1	FRAME BACK	63	0G9832	1	BRACKET, MOUNTING, ALT 7KW
3	049226	2	LOCK WASHER, M5	64	046526	3	WASHER LOCK M10
4	0H2382A	2	END, ASSY, RAIL	65	022511	3	SCREW HHC 3/8-16 X 1-1/4
5	0H2564	1	TANK FUEL	66	030209	1	SCREW HHC 5/16-28 X 1-1/4
6	0H2384B	1	PANEL, CPNL SIDE	67	0H8535	4	NUT FLG NYLN LK M5-8
7	0H2384C	1	RAIL, PANEL	68	0H8284	1	AVR, 7KW ALTERNATOR
8	0H2802G	1	30A XG RECEPTACLE PANEL	69	0H8049	1	END COVER
9	0H6371	1	HEAT SHIELD	70	052618	2	SCREW HHC M5.0 X 12
10	0H4420	2	XG RALLYE WHEEL	71	0H5762	1	FUEL LINE, FORMED VALVE TO ENGINE
11	0H1129	2	AXLE PIN				
12	087171	2	WASHER FLAT 1/2SS				
13	0H3443	2	COTTER HARPN				
14	022145	10	WASHER FLAT 5/16M8				
15	051731	4	SCREW HHC M8-1.25 X 5.0				
16	0G5445	4	SCREW HHTT M8-1.25 X 20				
17	0H5030	2	SCREW HHSO 1/8 X 7/8 BZ				
18	0H3590	2	VIBE MOUNT				
19	067989	14	NUT HEX FL WHIZ M8-1.25				
20	0H0720	1	FOOT				
21	039553	6	SCREW HHC M8-1.25 X 2.0				
22	0G2018	1	SCREW HHSO 1/4-20 X 7/8				
23	055114	1	LUG SLDRS #2, #8 X 17.64 CU				
24	074200198	1	WIRE ASSY GND ALT TO BASE				
25	0A1858	1	WASHER LOCK SPECIAL 1/4				
26	090988	2	SCREW HHTT M8-1.0 X 12				
27	0G8485	2	HANDLE GRPS				
28	0H2616	1	TUBE HANDLE				
29	0G5442	1	SNAP BUTTON				
30	0G0926	1	SCREW HHCS M6-1 X 16				
31	0H3854	1	HANDLE STOP				
32	0H2205	2	BEARING, HANDLE				
33	0H0031	2	CHB CUSTOM 5/16 18 X 46				
34	0H2206B	1	BRACKET, HANDLE				
35	0G8486	2	CAP NUT 5/16-18 ZBC				
36	0G8382	4	SCREW PPH #8-16 X 0.86				
37	0H2142	1	FUEL, VALVE HOLDER				
38	0H3451	1	SWITCH, RUN-STOP				
39	0G8560A	1	CABLE, CHOKE				
40	0H3455D	1	FUEL HOSE, 315MM LONG				
41	0H3419	1	FUEL, VALVE				
42	048815	3	SCREW HHC M5.0 X 8				
43	051713	3	FLAT WASHER, M5				
44	0H1326	1	FUEL FILTER				
45	0H1325A	1	FUEL CAP, CHROME				
46	0H1357	2	SCREW PPH M5-0.8 X 12				
47	0H1359	1	PLATE, FUEL GAGE				
48	0H1345	1	FUEL GAGE, 153MM LONG ARM				
49	0H4032	1	XG7000/8500 410 ENGINE				
50	048031G	4	HOSE CLAMP				
51	0H2043	4	VIBE MOUNT				
52	0E4190	1	CLAMP, CABLE				
53	0F5579	1	SCREW SHOULDER M5-0.8 X 20				
54	0H3587	8	SCREW PHCS M8-1.25 X 25				
55	0G3730	2	SCREW SHC M8-1.25 X 20 SEMS				
56	0H3033	1	MUFFLER, ASSY, 410				
57	090239	1	GASKET, EXHAUST				
58	0G8542	1	BRACKET, MUFFLER				
59	0H0919	1	BRUSH HOLDER				
60	0H4768A	2	WIRE ASSY JUMPER				
61	022129	5	WASHER LOCK M6				

E.C.O.	REV.	DATE
-	A	5/16/09
H-4930	B	8/18/09
H-5141	C	9/30/09
H-5344	D	11/04/09
H-5630	E	12/16/09

DO NOT SCALE

GROUP

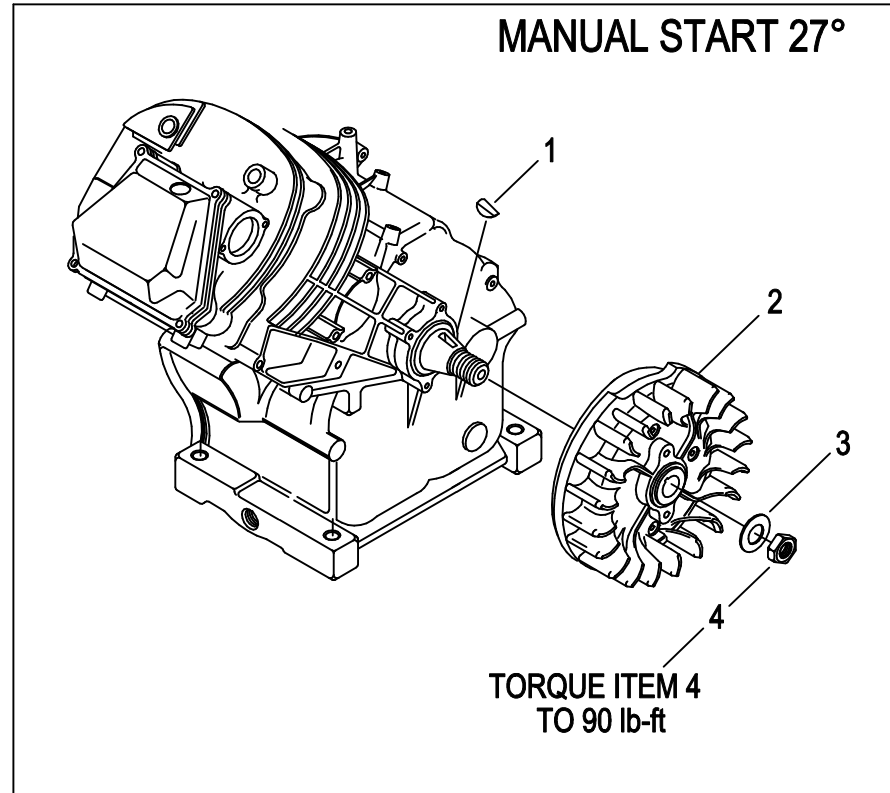
EXPLODED VIEW:		GENERATOR PARTS		GENERAC POWER SYSTEMS	
DRAWN BY:	GGP	DATE:	7/27/09	P.O. BOX 8 WAUKESHA, WIS. 53186	
CHECKED BY:	CR	DATE:	7/30/09	FIRST USE:	005797-0
APPROVED BY:	D. VALERIO	DATE:	8/3/09	PART NO.:	0H4035
RELEASED FOR PRODUCTION BY:	B. BRANDENBURG	DATE:	8/3/09	REV.:	E



EXPLODED VIEW: EV C/PNL 410 XG PORTABLE 6.5KW**DRAWING #: 0H4099****GROUP EV**

ITEM	PART#	QTY.	DESCRIPTION
1	022264	6	WASHER LOCK #8-M4
2	051715	9	NUT HEX M4-0.7 G8 YEL CHR
3	026579	1	WASHER LOCKF EXT #8 STEEL
4	077043B	1	CONDUIT FLEX .50"ID
5	0A5489	1	SNAP BUSHING.75 OPEN
6	0D4804B	1	XFMR IDLE CURRENT
7	0H8214	1	HOUR METER W/ALERTS AC/DC
8	0G9060	2	SCREW PPHM M4-0.7 X 10 BZC
9	0G9391	1	COVER,30A 120/240V
10	0G8382	4	SCREW PPPH #8-16 X .66" BZC
11	0G9756	1	RECTANGLE PANEL STORM-GEN
12	0H0265C	2	CB 20A 1P 120V CUL/CSA JOEMEX
13	SEE TABLE 1	-	WIRE HARNESS (NOT SHOWN)
14	0H2929	1	OUTLET 30A 120/250V SPCGR
15	0H3343F	1	PANEL COVER, XG PORTABLE
16	0H6784	2	LED CONTROL PANEL SNAP-FIT XG
17	0D4966	2	OUTLET 20A 120V GFCI GF20BK
18	SEE TABLE 1	-	TRULOAD POWERBAR ASSY
19	0H3968	3	SCREW PPHM M4-0.7 X 20 BLK ZC
20	0G9392	2	COVER, 20A 120V GFCI/DUPLEX
21	0H0265E	2	CB 30A 1P 120V CUL/CSA JOEMEX
22	043180	6	WASHER FLAT M4

FLYWHEEL OPTION ENGINE PRODUCTION LEVEL 10E



EXPLODED VIEW: FLYWHEEL OPTION, 410cc MANUAL START
DRAWING #: 0C4000A

GROUP

APPLICABLE TO:

ITEM	PART #	QTY.	DESCRIPTION
1	082774	1	KEY, WOODRUFF 4 x 19D
2	0C3347C	1	FLYWHEEL, LARGE FRAME 27 DEGREE
3	067198N	1	WASHER, BELV-20 X 2.2
4	067890	1	NUT, HEX - FLYWHEEL