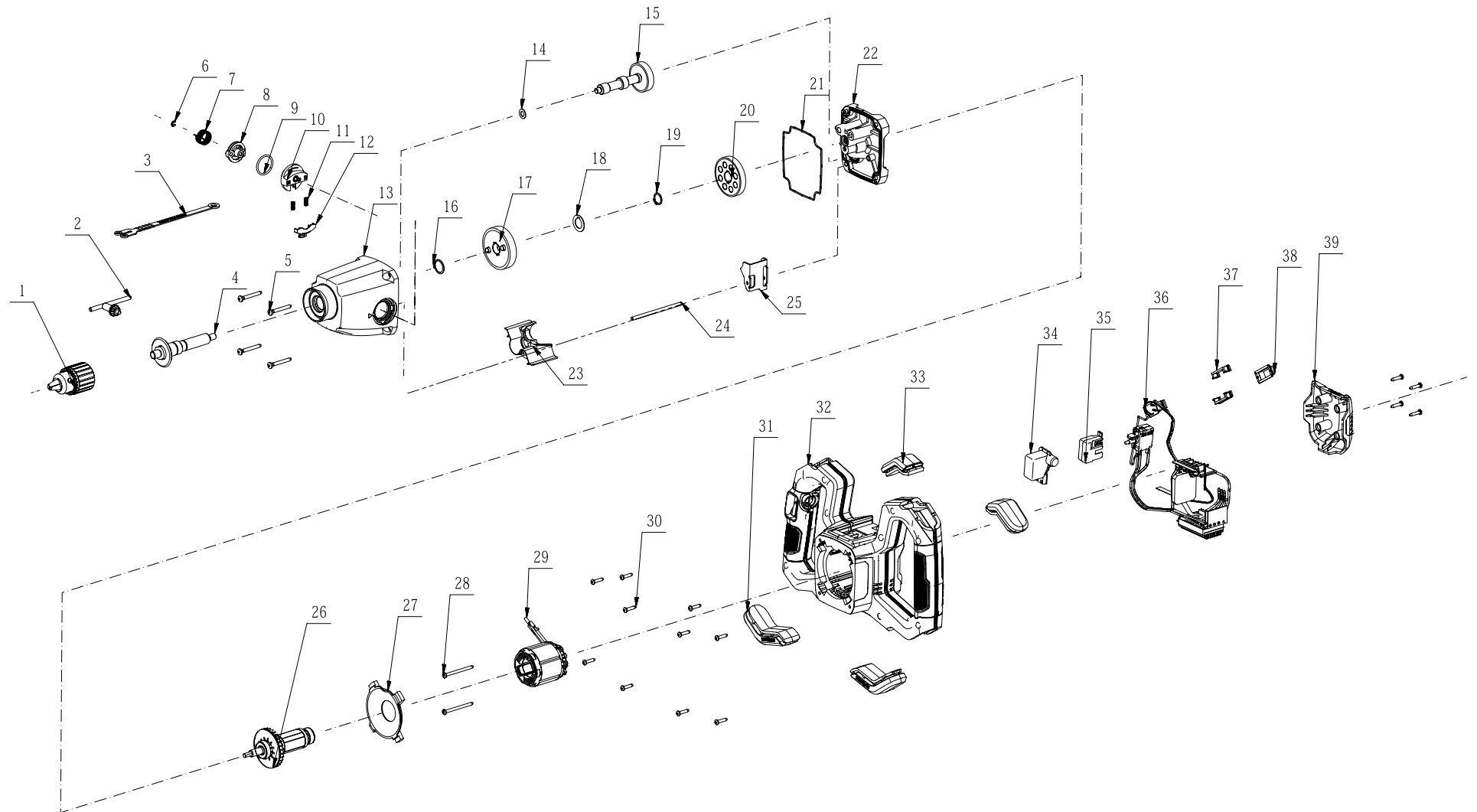


FLEX



No.	Product Model#	Part Number	Description	Qty
1	FX6151-Z	3860177001	Chuck	1
2	FX6151-Z	3860029006	Key	1
3	FX6151-Z	3132480001	Key Holder	1
4	FX6151-Z	2828419001	Output Shaft Assembly	1
5	FX6151-Z	5620378003	Hexagon Socket Screw	4
6	FX6151-Z	5660003002	E Ring	1
7	FX6151-Z	3660590001	Torsion Spring	1
8	FX6151-Z	3131386001	Knob Eccentric Pin	1
9	FX6151-Z	3121044002	O Ring	1
10	FX6151-Z	3131434001	Knob	1
11	FX6151-Z	3660344001	Spring	2
12	FX6151-Z	3131435001	Active Button	1
13	FX6151-Z	2824418001	Gear Case ASSY	1
14	FX6151-Z	3700150001	Washer D	1
15	FX6151-Z	2828367001	Gear Shaft Assembly	1
16	FX6151-Z	5660138001	Circlips For Shaft	1
17	FX6151-Z	2828418001	Gear Assembly	1
18	FX6151-Z	5650523001	Washer	1
19	FX6151-Z	5660145001	Circlips For Shaft	1
20	FX6151-Z	3520820001	Clutch Gear	1
21	FX6151-Z	5690326001	Seal Ring	1
22	FX6151-Z	2827780001	Middle Cover Assembly	1
23	FX6151-Z	3127815001	Seal Cover	1
24	FX6151-Z	3551658001	Plunger	1
25	FX6151-Z	3707564001	Push Plate	1
26	FX6151-Z	2825842001	Rotor Assembly	1
27	FX6151-Z	3129281001	Fan Baffle	1
28	FX6151-Z	5620455001	Tapping Screw	2
29	FX6151-Z	2740452002	Stator	1
30	FX6151-Z	5620157006	Hexagon Socket Screw	14
31	FX6151-Z	3129344001	Corner Guard	2
32	FX6151-Z	2828422001	Housing Set	1
33	FX6151-Z	3129343001	Corner Guard	2
34	FX6151-Z	2825849001	Locking Assembly	1
35	FX6151-Z	3130944001	Switch Trigger	1
36	FX6151-Z	2830838002	Main Electric Assembly	1
37	FX6151-Z	3127999001	Switch Support	2
38	FX6151-Z	5690315001	Switch Guard	1
39	FX6151-Z	3129278002	Rear Cover	1