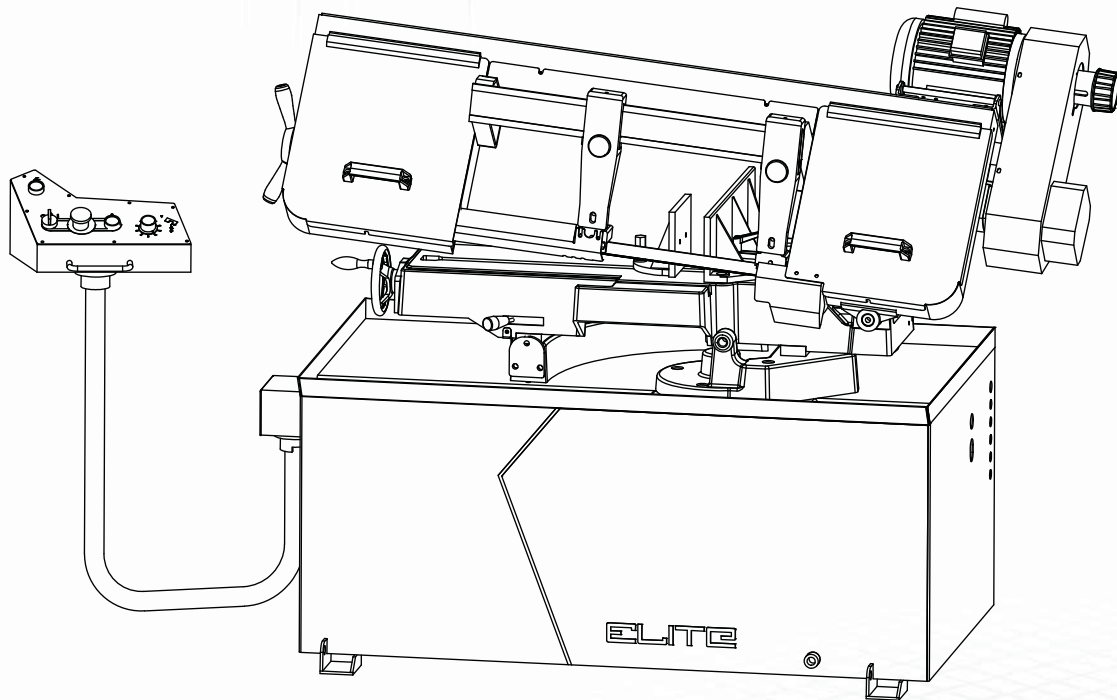


ELITE

HIGH PERFORMANCE MACHINERY

Operating Instructions and Parts Manual
8-in x 13-in Horizontal Cut-Off Bandsaw
Models: EHB-8VS and EHB-8VSM



JET®

427 New Sanford Road
LaVergne, Tennessee 37086

www.jettools.com

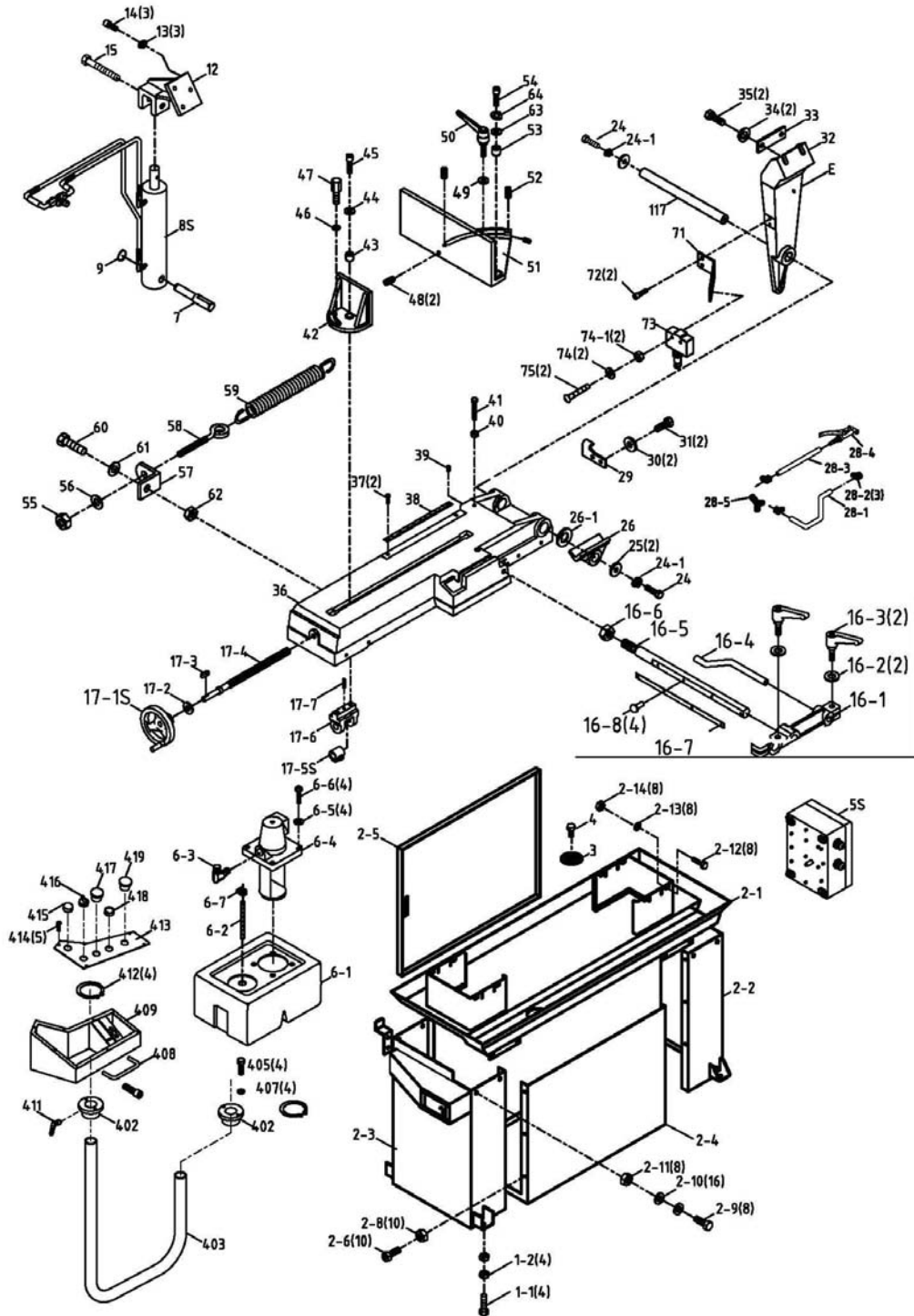
Ph.: 855-336-4032

Part No. M-891015

REV B1 05/2015

Copyright © 2015 JET

SAW STAND & BED - PARTS BREAKDOWN





SAW STAND & BED PARTS LIST

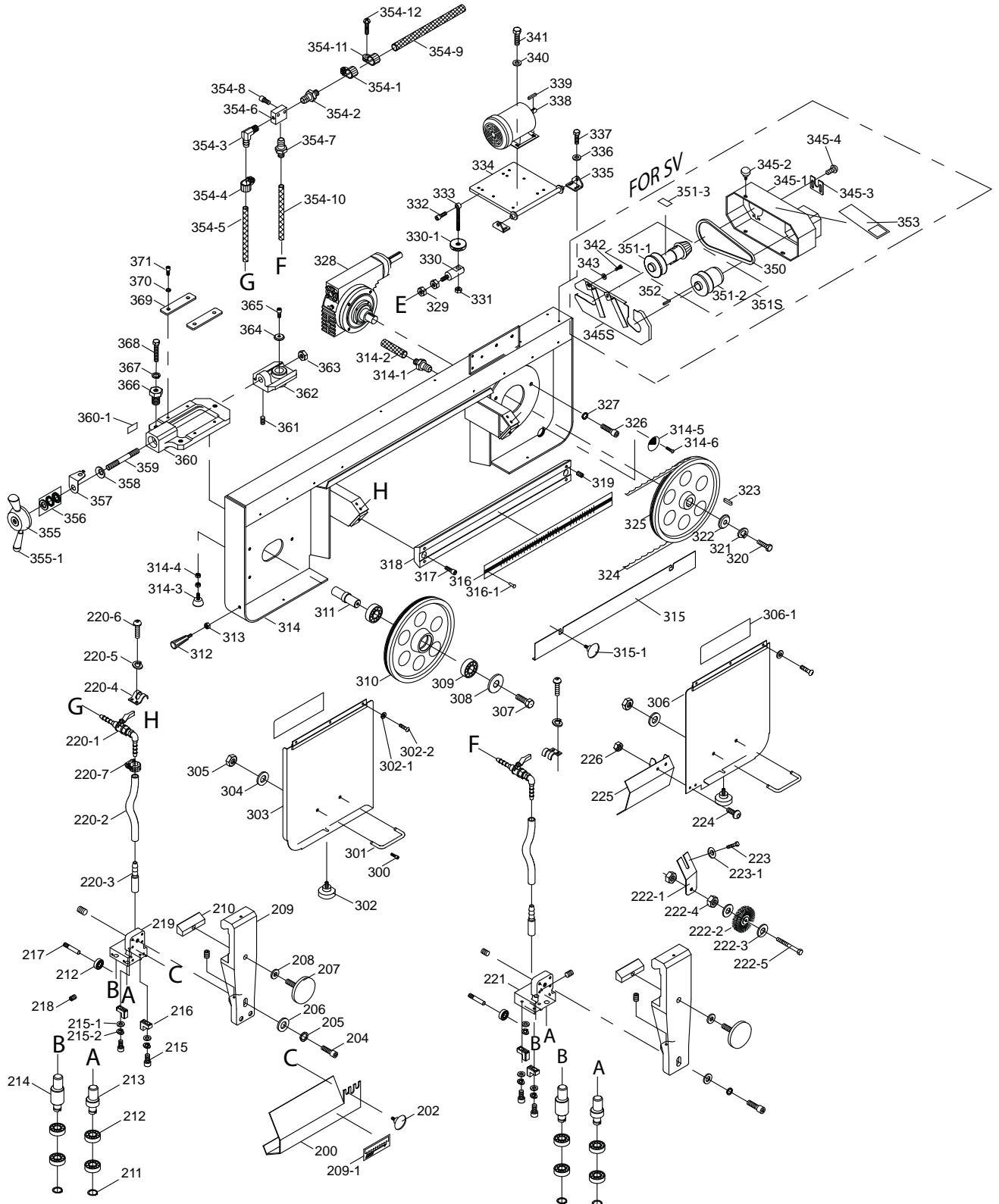
Index No.	Part No.	Description	Size	Qty.
1-1	TS-1499141	Hex Cap Screw	M12x80	4
1-2	TS-1540081	Hex Nut	M12	4
	EHB8VS-2A	Stand Assembly (Index 2-1 thru 2-5)		1
2-1	EHB8VS-2-1	Coolant Pan		1
2-2	EHB8VS-2-2	Right Leg		1
2-3	EHB8VS-2-3	Left Leg		1
2-4	EHB8VS-2-4	Front Panel/Shelf		1
2-5	EHB8VS-2-5	Back Door/Shelf		1
2-6	TS-0050031	Cross Head Hex Cap Screw	1/4"-20x3/4	10
2-8	TS-0561011	Hex Nut	1/4"-20	10
2-9	TS-0060051	Hex Cap Screw	3/8"-16x1	8
2-10	TS-0680041	Flat Washer	3/8"	16
2-11	TS-0561031	Hex Nut	3/8"-16	8
2-12	TS-1490071	Hex Cap Screw	M8x40	8
2-13	TS-0680031	Flat Washer	5/16"	8
2-14	TS-1540061	Hex Nut	M8	8
3	EHB8VS-3	Filter		1
4	TS-2246102	Button Head Socket Screw	M6x10	1
5S	EHB8VS-5S	Electrical Box Assembly (Reference Only)		1
6-1	EHB8VS-6-1	Coolant Tank		1
6-2	EHB8VS-6-2	Hose	13x19-350mm	1
6-3	EHB8VS-6-3	Elbow	PT1/2x1/4	1
6-4	EHB8VS-6-4	Coolant Pump	1/8HP,115/230V,1Ph	1
6-5	TS-0680021	Flat Washer	1/4"	4
6-6	TS-081F052	Pan Head Machine Screw	1/4"-20x3/4	4
6-7	EHB8VS-6-7	Hose Clamp		1
7	EHB8VS-7	Pivot Shaft		1
8S	EHB8VS-8S	Cylinder Assembly		1
9	EHB8VS-9	Ext. Retaining Ring	S18	1
12	EHBS8VS-12	Cylinder Upper Bracket		1
13	TS-0720081	Lock Washer	5/16"	3
14	TS-1504061	Socket Head Cap Screw	M8x30	3
15	TS-1505081	Socket Head Cap Screw	M10x50	1
16S	EHB8VS-16S	Stock Stop Assembly (Index 16-1 thru 16-8) not shown		1
16-1	EHB8VS-16-1	Bracket		1
16-2	TS-1550061	Flat Washer	M8	2
16-3	EHB8VS-16-3	Lock Handle		2
16-4	EHB8VS-16-4	Distance Set Rod		1
16-5	EHB8VS-16-5	Shaft		1
16-6	TS-154010	Hex Nut	M16 x P2.0	1
16-7	EHB8VS-16-7	Scale		1
16-8	TS-1540071	Rivet		4
17-1S	EHB8VS-17-1S	Hand wheel Assembly		1
17-2	TS-0680051	Flat Washer	7/16"	1
17-3	EHB8VS-17-3	Key	5x5x15L	1
17-4	EHB8VS-17-4	Acme Lead screw		1
17-5S	EHB8VS-17-5S	Acme Nut Assembly		1

Index No.	Part No.	Description	Size	Qty.
17-6	EHB8VS-17-6	Bracket		1
17-7	EHB8VS-17-7	Pin		1
24	TS-1505031	Socket Head Cap Screw	M10x25	2
24-1	TS-2361101	Lock Washer	M10	2
25	EHB8VS-25	Pivot Shaft Washer		2
26	EHB8VS-26	Support Bracket		1
26-1	EHB8VS-26-1	Gap Ring		2
28-1	EHB8VS-28-1	Tube	ID1/2"x2.8tx126cm	1
28-2	EHB8VS-28-2	Hose Clamp	Ø19mm	3
28-3	EHB8VS-28-3	Tube	ID1/2"x2.8tx320cm	1
28-4	EHB8VS-28-4	Spray Gun		1
28-5	EHB8VS-28-5	3 Way Connector	PT1/2"	1
29	EHB8VS-29	Position Set Bracket		1
30	TS-0680031	Flat Washer	5/16"	2
31	TS-1490031	Hex Cap Screw	M8x20	2
32	EHB8VS-32	Rear Pivot Bracket		1
33	EHB8VS-33	Plate		1
34	TS-2361101	Lock Washer	M10	2
35	TS-149105	Hex Cap Screw	M10x35	2
36	EHB8VS-36	Bed		1
37	TS-2245102	Button Head Socket Screw	M5x10	2
38	EHB8VS-38	Angle Scale		1
39	TS-1524021	Socket Set Screw	M8x10	1
40	TS-1540061	Hex Nut	M8	1
41	TS-1490081	Hex Cap Screw	M8x45	1
42	EHB8VS-42	Front Moveable Vise Jaw		1
43	EHB8VS-43	Bushing		1
44	TS-1550071	Flat Washer	M10	1
45	TS-1505051	Socket Head Cap Screw	M10x35	1
46	EHB8VS-46	Washer	ø10.5xø27xt3mm	1
47	EHB8VS-47	Bolt		1
48	EHB8VS-48	Socket Set Screw	M8x30	2
49	EHB8VS-46	Washer	ø10.5xø27xt3mm	1
50	EHB8VS-50	Locking Handle	M10x37	1
51	EHB8VS-51	Rear Fixed Vise Jaw		1
52	TS-1523031	Socket Set Screw	M6x10	1
53	EHB8VS-53	Bushing		1
54	TS-1506041	Socket Head Cap Screw	M12x35	1
55	TS-0561031	Hex Nut	3/8"-16	1
56	TS-0680041	Flat Washer	3/8"	1
57	EHB8VS-57	Spring Bracket		1
58	EHB8VS-58	Spring Eye Bolt		1
59	EHB8VS-59	Spring		1
60	TS-0081031	Hex Cap Screw	5/16"-18x3/4"	1
61	TS-0680031	Flat Washer	5/16"	1
62	TS-1505051	Socket Head Cap Screw	M10x35	1
63	TS-2360121	Flat Washer	M12	1
64	TS-2361011	Spring Washer	M12	1



Index No.	Part No.	Description	Size	Qty.
71	EHB8VS-71	Limit Switch Holder		1
72	TS-1534042	Pan Head Machine Screw	M6x12	2
73	EHB8VS-73	Limit Switch		1
74	TS-1550021	Flat Washer	M4	2
74-1	TS-1540021	Hex Nut	M4	2
75	TS-2284302	Pan Head Machine Screw	M4x30	2
117	EHB8VS-117	Pivot Shaft		1
402	EHB8VS-402	Swivel Bushing		2
403	EHBS8VS-403	Control Column		1
405	TS-1490011	Hex Cap Screw	M8 x 12	4
407	TS-1550061	Flat Washer	M8	4
408	EMB8VS-301	Handle		1
409	EHB8VS-409	Control Box		1
411	EHB8VS-411	Lock Handle	M8 x 20	1
412	EHB8VS-412	C-Ring	S-36	4
413	EHB8VS-413	Control Panel		1
414	TS-2244102	Socket Head Button Screw	M4 x 10	5
415	EHB8VS-415	Electric Lamp		1
416	EHB8VS-416	Start Switch		1
417	EHB8VS-417	Emergency Stop Switch		1
418	EHB8VS-418	Coolant Pump Switch		1
419	EHB8VS-419	Hydraulic Feed Control Knob		1

SAW HEAD - PARTS BREAKDOWN





SAW HEAD PARTS LIST

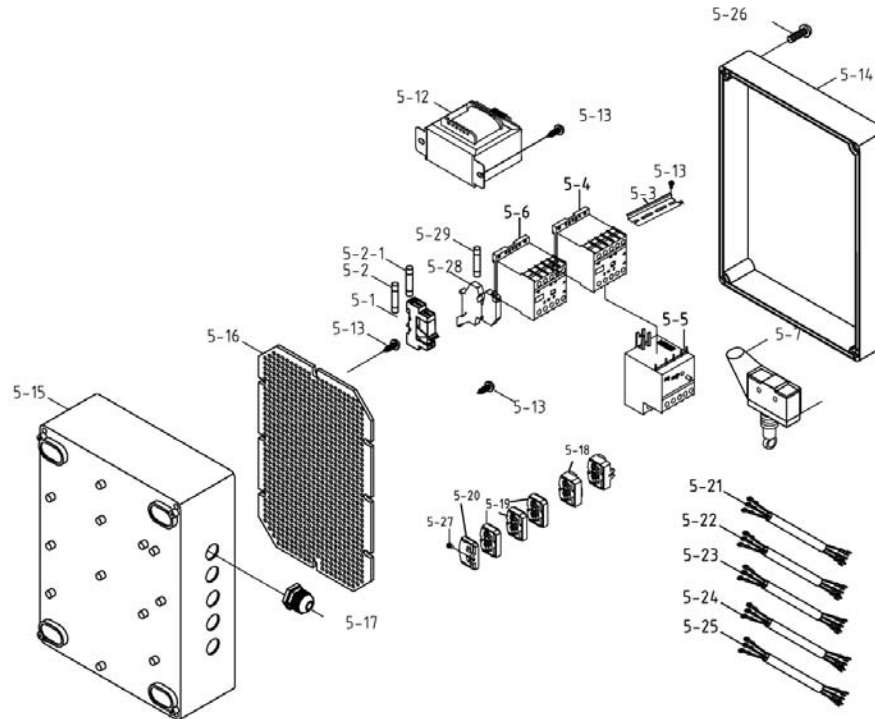
Index No.	Part No.	Description	Size	Qty.
200	EHB8VS-200	Blade Guard		1
202	EHB8VS-202	Knob	M6-1.0Px10L	2
204	TS-1504051	Socket Head Cap Screw	M8x25	2
205	TS-1551061	Lock Washer	M8	2
206	TS-1550061	Flat Washer	M8	2
207	EHB8VS-207	Knob		2
208	TS-1550071	Flat Washer	M10	2
209	EHB8VS-209	Blade Guide Support Arm		2
209-1	EHB8VS-209-1	Blade Direction Label		2
210	EHB8VS-210	Gib		2
211	EHB8VS-211	Ext. Retaining Ring	ø8	4
212	BB-608ZZ	Bearing	608ZZ	10
213	EHB8VS-213	Eccentric Guide		2
214	EHB8VS-214	Eccentric Guide		2
215	TS-1503051	Socket Head Cap Screw	M6x20	4
215-1	TS-1550041	Flat Washer	M6	4
215-2	TS-2361061	Lock Washer	M6	4
216	EHB8VS-216	Carbide Guide		4
217	EHB8VS-217	Bearing Shaft		2
218	TS-1523011	Socket Set Screw	M6x6	4
219	EHB8VS-219	Guide Bracket (Left)		1
220-1	EHB8VS-220-1	Valve		2
220-2	EHB8VS-220-2	Hose	ø6	2
220-3	EHB8VS-220-3	Straight Connector		2
220-4	EHB8VS-220-4	Hold Down Clamp		2
220-5	TS-2361061	Lock Washer	M6	2
220-6	TS-2246122	Button Head Socket Screw	M6x12	2
220-7	EHB8VS-220-7	Horse Clamp		2
221	EHB8VS-221	Right Guide Bracket		1
	EHB8VS-222S	Brush Assembly (Index 222-1 thru 222-5)		1
222-1	EHB8VS-222-1	Brush Holder		1
222-2	EHB8VS-222-2	Blade Brush		1
222-3	TS-1550041	Flat Washer	M6	2
222-4	TS-1540041	Hex Nut	M6	2
222-5	TS-1482071	Hex Cap Screw	M6x35	1
223	TS-2246102	Socket Head Button Screw	M6x10	1
223-1	TS-2361061	Lock Washer	M6	1
224	TS-2246122	Socket Head Button Screw	M6x12	2
225	EHB8VS-225	Blade Brush Guard		1
226	TS-1540041	Hex Nut	M6	2
300	TS-1503051	Socket Head Cap Screw	M6-1.0Px20L	6
301	EHB8VS-301	Handle		2
302	EHB8VS-302	Knob		2
302-1	TS-1550031	Flat Washer	M5	6
302-2	TS-2245102	Button Head Socket Screw	M5x10	6
303	EHB8VS-303	Left Blade Wheel Cover		1
304	TS-2361061	Lock Washer	M6	4

Index No.	Part No.	Description	Size	Qty.
305	TS-2311061	Hex Nut	M6-1.0P	4
306	EHB8VS-306	Right Blade Wheel Cover		1
306-1	EHB8VS-306-1	Padding Strip		2
307	TS-1490031	Hex Cap Screw	M8x20	1
308	EHB8VS-308	Washer	ø16xø30xt3mm	1
309	BB-6205VV	Bearing	6205-2RS	2
310	EHB8VS-310	Idler Wheel		1
311	EHB8VS-311	Shaft		1
312	EHB8VS-312	Handle		1
313	TS-0561031	Hex Nut	3/8"-16	2
314	EHB8VS-314	Body Frame		1
314-1	EHB8VS-314-1	Connector	PT1/2"	1
314-2	EHB8VS-314-2	Hose	18x24-190mm	1
314-3	EHB8VS-314-3	Stop Bolt		1
314-4	TS-1540061	Hex Nut	M8	2
314-5	EHB8VS-314-5	Screen		1
314-6	EHB8VS-314-6	Round Head Screw	M5-0.8Px10L	1
315	EHB8VS-315	Cover		1
315-1	EHB8VS-315-1	Knob		2
316	EHB8VS-316	Scale		1
316-1	EHB8VS-316-1	Rivet	ø2x5L	2
317	TS-1506011	Socket Head Cap Screw	M12x20	2
318	EHB8VS-318	Slide Bar		1
319	TS-1524051	Socket Set Screw	M8x20	4
320	TS-1492021	Hex Cap Screw	M12x30	1
321	TS-2361121	Lock Washer	M12	1
322	EHB8VS-322	Drive Shaft Washer		1
323	EHB8VS-323	Key	7x7x30L	1
324	891091	Blade (Standard)	1x.035x114.5" - 5/8T	1
325	EHB8VS-325	Drive Wheel	Key Slot 7mm	1
326	TS-1505021	Socket Head Cap Screw	M10x20	3
327	TS-1551071	Lock Washer	M10	3
328	EHB8VS-328	Gear Box Assembly	1:30	1
329	TS-1541041	Nylon Nut	M10	2
330	EHB8VS-330	Shaft		1
330-1	EHB8VS-330-1	Knurled Disc		1
331	TS-1540081	Hex Nut	M12	1
332	TS-1505101	Socket Head Cap Screw	M10x60	1
333	EHB8VS-333	Motor Adjusting Screw		1
334	EHB8VS-334	Motor Mount Plate		1
335	EHB8VS-335	Motor Mount Plate Bracket		2
336	TS-1550041	Flat Washer	M6	4
337	TS-1482041	Hex Cap Screw	M6x20	4
338	EHB8VS-338	Motor	1.5HP,115/230V,1Ph	1
339	EHB8VS-339	Key	8x7x35L	1
340	TS-1550061	Flat Washer	M8	4
341	TS-1490021	Hex Cap Screw	M8x16	4
342	TS-1482011	Hex Cap Screw	M6x10	2
343	TS-1550041	Flat Washer	M6	2



Index No.	Part No.	Description	Size	Qty.
345	EHB8VS-345	Pulley Guard		1
345-1	EHB8VS-345-1	Pulley Cover		1
345-2	EHB8VS-345-2	Knob		2
345-3	EHB8VS-345-3	Bracket		1
345-4	EHB8VS-345-4	Cross Head Screw	M5x8	2
350	EHB8VS-350	Belt	V-330	1
351S	EHB8VS-351S	Variable Speed Pulley Set		1
351-1	EHB8VS-351-1	Motor Pulley		1
351-2	EHB8VS-351-2	Gear Box Pulley		1
351-3	EHB8VS-351-3	Speed Chart		1
352	EHB8VS-352	Key	7x7x37L	1
353	EHB8VS-353	Speed Chart Label		1
354-1	EHB8VS-354-1	Hose Clamp	ø12	2
354-2	EHB8VS-354-2	Straight Connector	PT1/4"x1/4"	1
354-3	EHB8VS-354-3	Elbow	PT1/4"x1/4"	1
354-4	EHB8VS-354-4	Hose Clamp	ø19	1
354-5	EHB8VS-354-5	Hose	ID1/4"x2.2tx80cm	1
354-6	EHB8VS-354-6	3 Way Coolant Block		1
354-7	EHB8VS-354-7	Straight Connector	PT1/4"x1/4"	1
354-8	TS-1503071	Socket Head Cap Screw	M6x30	2
354-9	EHB8VS-354-9	Hose	ID1/4"x2.2tx143cm	1
354-10	EHB8VS-354-10	Hose	ID1/4"x2.2tx32cm	1
354-11	EHB8VS-354-11	Hose Clamp		2
354-12	EHB8VS-354-12	Cross Head Screw		2
355	EHB8VS-355	Hub		1
355-1	EHB8VS-355-1	Blade Tension Handle		2
356	BB-51203	Thrust Bearing	51203	1
357	EHB8VS-357	Tension Indicator		1
358	EHB8VS-358	Lock Washer Tension	ID16.3x31.5x1.8t	10
359	EHB8VS-359	Tension Shaft		1
360	EHB8VS-360	Tension Slide Base		1
360-1	EHB8VS-360-1	Tension Scale		1
361	TS-1523051	Socket Set Screw	M6x16	1
362	EHB8VS-362	Tension Slide Block		1
363	TS-154010	Hex Nut	M16	1
364	EHB8VS-364	Washer		1
365	TS-1490031	Hex Cap Screw	M8x20	1
366	EHB8VS-366	Screw		3
367	TS-2361101	Lock Washer	M10	3
368	TS-1491101	Hex Cap Screw	M10x60	3
369	EHB8VS-369	Plate		2
370	TS-2361081	Lock Washer	M8	4
371	TS-1490011	Hex Cap Screw	M8x12	4
372	TS-2246122	Button Head Socket Screw	M6x12	2
373	TS-0680021	Flat Washer	1/4"	2
374	EHB8VS-374	Control Box		1
375	TS-2286121	Flat Head Machine Screw	M6x12	2
376	EHB8VS-376	Control Box Front Panel	5 Hole	1
377	TS-1533032	Pan Head Machine Screw	M5x8	4

ELECTRIC ASSEMBLY



Index No.	Part No.	Description	Size	Qty.
5-1	EHB8VS-5-1	Fuse Base		2
5-2	EHB8VS-5-2	Fuse	220V 1A	1
5-2-1	EHB8VS-5-2-1	Fuse	110V 2A	1
5-3	EHB8VS-5-3	Aluminum Rail		1
5-4	EHB8VS-5-4	Magnetic Contactor	CU-18	1
5-5	EHB8VS-5-5	Overload Relay	RHU-10K1	1
5-6	EHB8VS-5-6	Pump Contactor		1
5-7	EHB8VS-5-7	Limit Switch	TM1309	1
5-12	EHB8VS-5-12	Transformer	110/220/24V	1
5-13	EHB8VS-5-13	Pan Head Machine Screw	3/16 x 3/8	15
5-14	EHB8VS-5-14	Electrical Control Box Cover		1
5-15	EHB8VS-5-15	Electrical Control Box Base		1
	EHB8VS-ECB	Electrical Control Box compound(included 5-14,5-15)	1	
5-16	EHB8VS-5-16	Net Plate		1
5-17	EHB8VS-5-17	Cable Glands	PG11	5
5-18	EHB8VS-5-18	Terminal Block	264-336	2
5-19	EHB8VS-5-19	Terminal Block	264-326	3
5-20	EHB8VS-5-20	Terminal Block	266-306	1
5-21	EHB8VS-5-21	Motor Cable		1
5-22	EHB8VS-5-22	Limit Switch Cable		1
5-23	EHB8VS-5-23	Power Cable		1
5-24	EHB8VS-5-24	Control Wire		1
5-25	EHB8VS-5-25	Pump Cable		1
5-26	EHB8VS-5-26	Pan Head Machine Screw	M4 x 15	4
5-27	EHB8VS-5-27	Pan Head Machine Screw	M3 x 15	2
5-28	EHB8VS-5-28	Fuse Base		1
5-29	EHB8VS-5-29	Fuse	2A	1