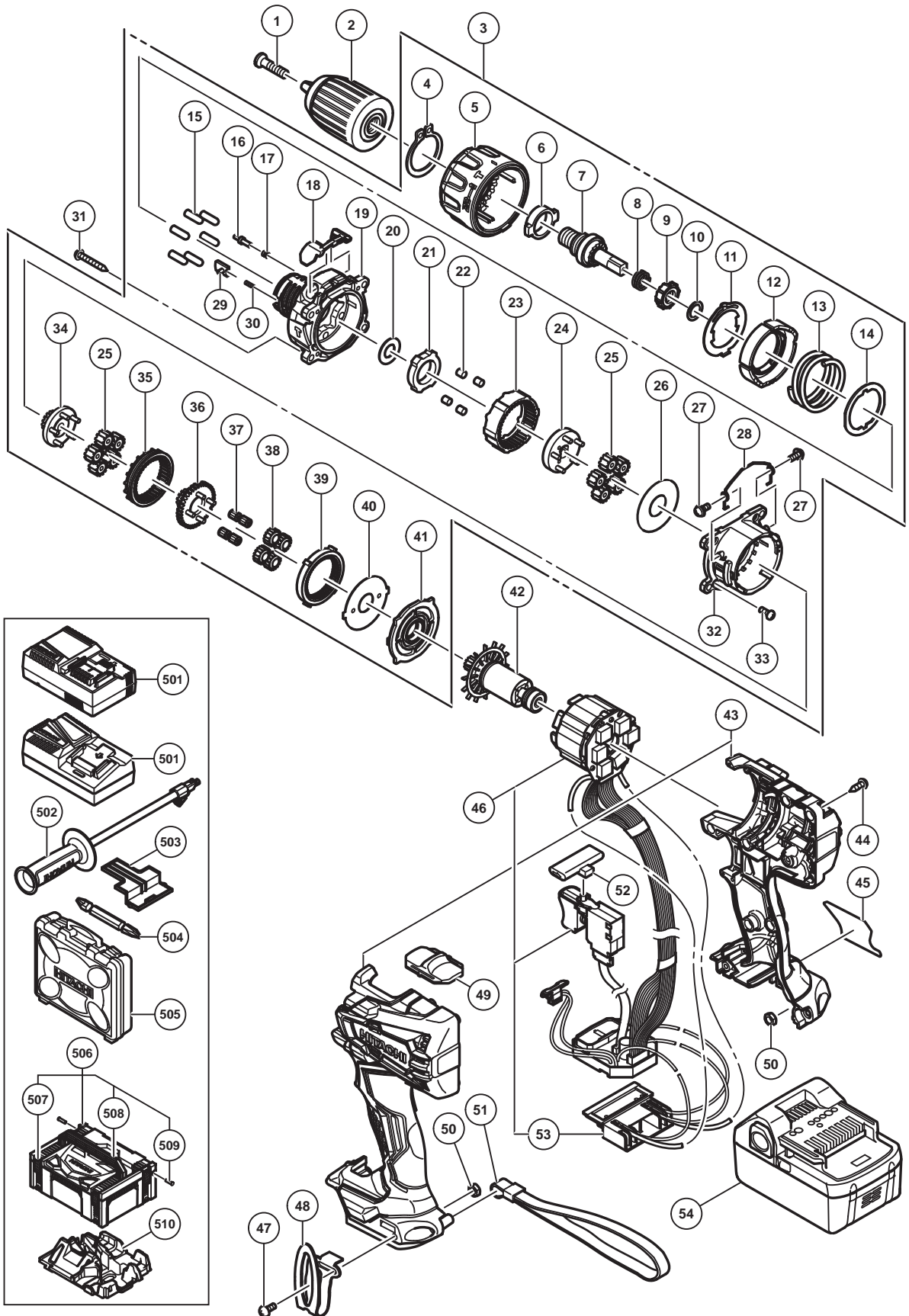


ELECTRIC TOOL PARTS LIST

■ **CORDLESS IMPACT DRIVER DRILL 2015-10-30**
Model DV 18DBL2 (E1)



PARTS

DV 18DBL2

| ITEM NO. | CODE NO. | DESCRIPTION | NO. USED | REMARKS |
|----------|----------|--|----------|-------------------|
| 1 | 995344 | FLAT HD. SCREW (A) (LEFT HAND) M6 X 25 | 1 | |
| * 2 | 339721 | DRILL CHUCK 13VLRX-N | 1 | |
| * 2 | 339722 | DRILL CHUCK 13VLRX-N (USA) | 1 | |
| 3 | 339737 | GEAR BOX ASS'Y | 1 | INCLUD.4-30,32-41 |
| 4 | 339736 | RETAINING RING FOR D30 SHAFT | 1 | |
| 5 | 339739 | CLUTCH DIAL | 1 | |
| 6 | 339741 | METAL | 1 | |
| 7 | 339742 | SPINDLE | 1 | |
| 8 | 327136 | SPRING (C) | 1 | |
| 9 | 339772 | RATCHET (B) | 1 | |
| 10 | 327147 | WASHER (A) | 1 | |
| 11 | 339744 | CLICK SPRING | 1 | |
| 12 | 339745 | NUT | 1 | |
| 13 | 339746 | SPRING | 1 | |
| 14 | 339747 | THRUST PLATE | 1 | |
| 15 | 333539 | PIN SET (6 PCS.) | 6 | |
| 16 | 339748 | STOPPER | 2 | |
| 17 | 331886 | STOPPER SPRING | 2 | |
| 18 | 339749 | RUBBER CAP | 1 | |
| 19 | 339750 | FRONT CASE | 1 | |
| 20 | 337411 | WASHER (B) | 1 | |
| 21 | 339752 | LOCK RING | 1 | |
| 22 | 319744 | ROLLER | 2 | |
| 23 | 339753 | RING GEAR | 1 | |
| 24 | 339754 | CARRIER | 1 | |
| 25 | 339774 | PLANET GEAR (B) SET (5 PCS.) | 10 | |
| 26 | 331892 | WASHER (A) | 1 | |
| 27 | 331895 | SCREW SET D2 (2 PCS.) | 2 | |
| 28 | 339755 | SHIFT ARM | 1 | |
| 29 | 339773 | SLIP BLOCK | 2 | |
| 30 | 327133 | STOPPER SPRING | 2 | |
| 31 | 305490 | TAPPING SCREW (W/FLANGE) D4 X 30 (BLACK) | 4 | |
| 32 | 339756 | REAR CASE | 1 | |
| 33 | 320087 | SCREW SET M3 X 12 (4 PCS.) | 4 | |
| 34 | 339757 | PINION (C) | 1 | |
| 35 | 339758 | SLIDE RING GEAR | 1 | |
| 36 | 339759 | PINION (B) | 1 | |
| 37 | 331926 | NEEDLE BEARING SET (4 PCS.) | 4 | |
| 38 | 334441 | PLANET GEAR (A) SET (4 PCS.) | 4 | |
| 39 | 339760 | FIRST RING GEAR | 1 | |
| 40 | 339761 | WASHER (B) | 1 | |
| 41 | 339762 | MOTOR SPACER | 1 | |
| 42 | 339763 | ROTOR PINION SET | 1 | |
| 43 | 339765 | HOUSING (A). (B) SET | 1 | |
| 44 | 313687 | TAPPING SCREW (W/FLANGE) D3 X 16 (BLACK) | 10 | |
| 45 | | NAME PLATE | 1 | |
| 46 | 339766 | WIRING ASS'Y | 1 | INCLUD.53 |
| 47 | 327001 | TRUSS HD. SCREW M4 (BLACK) | 1 | |
| 48 | 332824 | HOOK | 1 | |
| 49 | 334267 | SHIFT KNOB | 1 | |

PARTS

DV 18DBL2

| ITEM NO. | CODE NO. | DESCRIPTION | NO. USED | REMARKS |
|----------|----------|-----------------------------------|----------|--------------------|
| 50 | 327002 | LOCK NUT M4 (BLACK) | 2 | |
| * 51 | 306952 | STRAP (BLACK) | 1 | EXCEPT FOR USA,CAN |
| 52 | 339768 | PUSHING BUTTON | 1 | |
| 53 | 339769 | BATTERY TERMINAL | 1 | |
| * 54 | 338891 | BATTERY BSL 1860 (EUROPE,AUS,NZL) | 2 | INCLUD.503 |
| * 54 | 335790 | BATTERY BSL 1850 (EUROPE,AUS,NZL) | 2 | INCLUD.503 |
| * 54 | 335791 | BATTERY BSL 1850 (USA,CAN) | 2 | INCLUD.503 |
| * 54 | 336265 | BATTERY BSL 1850 (CHN) | 2 | INCLUD.503 |
| * 54 | 330068 | BATTERY BSL 1830 (EUROPE,AUS,NZL) | 2 | INCLUD.503 |
| * 54 | 334729 | BATTERY BSL 1830 (TPE) | 2 | INCLUD.503 |
| * 54 | 339190 | BATTERY BSL 1825 (BRA) | 2 | INCLUD.503 |
| | | | | |
| | | | | |
| | | | | |
| | | | | |

STANDARD ACCESSORIES

| ITEM NO. | CODE NO. | DESCRIPTION | NO. USED | REMARKS |
|----------|----------|---------------------------|----------|----------------|
| * 501 | | CHARGER (MODEL UC 18YFSL) | 1 | |
| * 501 | | CHARGER (MODEL UC 18YSL3) | 1 | |
| 502 | 339770 | SIDE HANDLE | 1 | |
| * 503 | 329897 | BATTERY COVER | 1 | |
| 504 | 983006 | + DRIVER BIT NO.2 65L | 1 | |
| * 505 | 339778 | CASE | 1 | |
| * 506 | 336471 | CASE ASS'Y (STACKABLE) | 1 | INCLUD.507-509 |
| * 507 | 336472 | LATCH | 4 | |
| * 508 | 336473 | HANDLE | 1 | |
| * 509 | 336474 | HINGE | 2 | |
| * 510 | 339776 | INNER TRAY | 1 | |
| | | | | |
| | | | | |
| | | | | |
| | | | | |

OPTIONAL ACCESSORIES

| ITEM NO. | CODE NO. | DESCRIPTION | NO. USED | REMARKS |
|----------|----------|----------------------------|----------|-------------|
| 601 | 955657 | - DRIVER BIT (A) 3MM X 70L | 1 | |
| 602 | 955659 | - DRIVER BIT (A) 4MM X 70L | 1 | |
| 603 | 955674 | - DRIVER BIT (A) 6MM X 70L | 1 | |
| 604 | 983004 | + DRIVER BIT NO.1 65L | 1 | |
| 605 | 983011 | + DRIVER BIT NO.3 65L | 1 | |
| * 606 | 303709 | DEPTH GAUGE | 1 | |
| * 606 | 310331 | DEPTH GAUGE | 1 | FOR USA,CAN |
| 607 | 306927 | SILICONE RUBBER | 1 | |
| | | | | |
| | | | | |