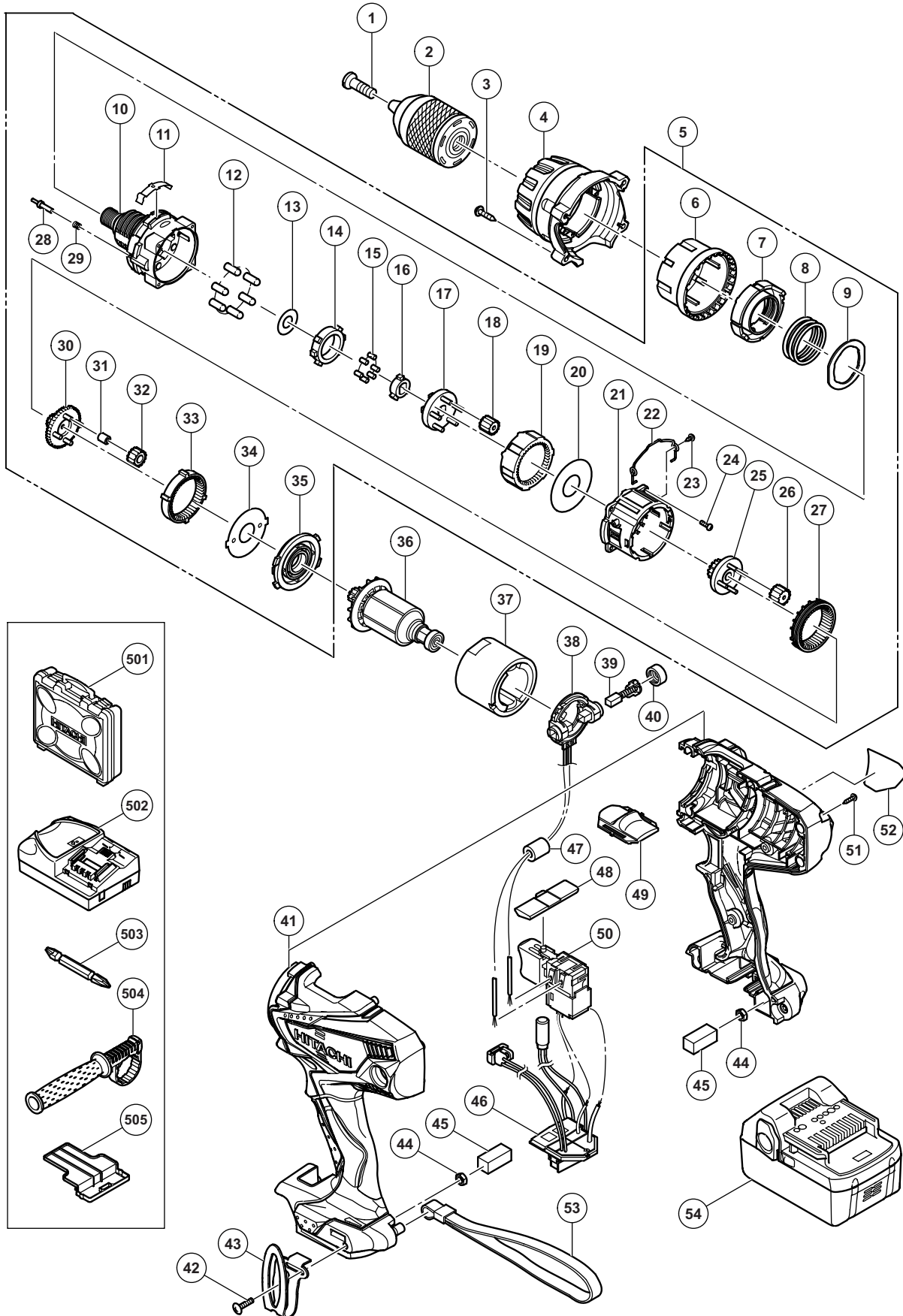


ELECTRIC TOOL PARTS LIST

CORDLESS DRIVER DRILL Model DS 18DSDL

2012·1·12
(E1)



PARTS

DS 18DSDL

ITEM NO.	CODE NO.	DESCRIPTION	NO. USED	REMARKS
1	330-588	SPECIAL SCREW (LEFT HAND) M6 X 27	1	
2	323-898	DRILL CHUCK 13VLRN-N (W/O CHUCK WRENCH)	1	
3	334-473	TAPPING SCREW (W/SP. WASHER) D3 X 20 (BLACK)	4	
4	334-429	COVER (A)	1	
5	334-430	GEAR BOX ASS'Y	1	INCLUD. 6-35
6	334-431	DIAL HOLDER (A)	1	
7	331-881	NUT	1	
8	334-432	SPRING	1	
9	334-433	THRUST WASHER	1	
10	334-434	FRONT CASE	1	
11	333-516	CLICK SPRING	1	
12	333-539	PIN SET (6 PCS.)	6	
13	331-909	WASHER (A)	1	
14	331-903	LOCK RING (A)	1	
15	331-888	NEEDLE ROLLER SET (6 PCS.)	6	
16	331-904	LOCK CAM	1	
17	333-517	CARRIER	1	
18	333-518	PLANET GEAR (C) SET (5 PCS.)	5	
19	333-519	RING GEAR	1	
20	331-892	WASHER (A)	1	
21	331-893	REAR CASE	1	
22	331-894	SHIFT ARM	1	
23	330-579	SCREW SET D2 X 3.5 (2 PCS.)	2	
24	320-087	SCREW SET M3 X 12 (4 PCS.)	4	
25	331-897	PINION (C)	1	
26	333-520	PLANET GEAR (B) SET (4 PCS.)	4	
27	333-521	SLIDE RING GEAR	1	
28	333-522	STOPPER (A)	2	
29	333-523	STOPPER SPRING	2	
30	333-524	PINION (B)	1	
31	331-926	NEEDLE BEARING SET (4 PCS.)	4	
32	334-441	PLANET GEAR (A) SET (4 PCS.)	4	
33	334-435	FIRST RING GEAR	1	
34	322-988	WASHER (B)	1	
35	331-902	MOTOR SPACER	1	
36	360-930	ARMATURE AND PINION SET 18 V	1	
37	334-442	MAGNET	1	
38	334-436	BRUSH BLOCK	1	
39	999-054	CARBON BRUSH 5 X 6 X 11.5 (1 PAIR)	2	
40	319-918	BRUSH CAP	2	
41	334-440	HOUSING (A).(B) SET	1	
42	327-001	TRUSS HD. SCREW M4 (BLACK)	1	
43	332-824	HOOK	1	
44	327-002	LOCK NUT M4 (BLACK)	2	
45	328-644	PACKING	2	
46	334-438	CONTROLLER TERMINAL SET	1	
* 47	334-443	FERRITE CORE	1	FOR EUROPE, GBR, AUT, NOR, SWE, DEN, FIN, RUS
48	331-907	PUSHING BUTTON	1	
49	334-267	SHIFT KNOB	1	
50	333-640	DC-SPEED CONTROL SWITCH	1	

