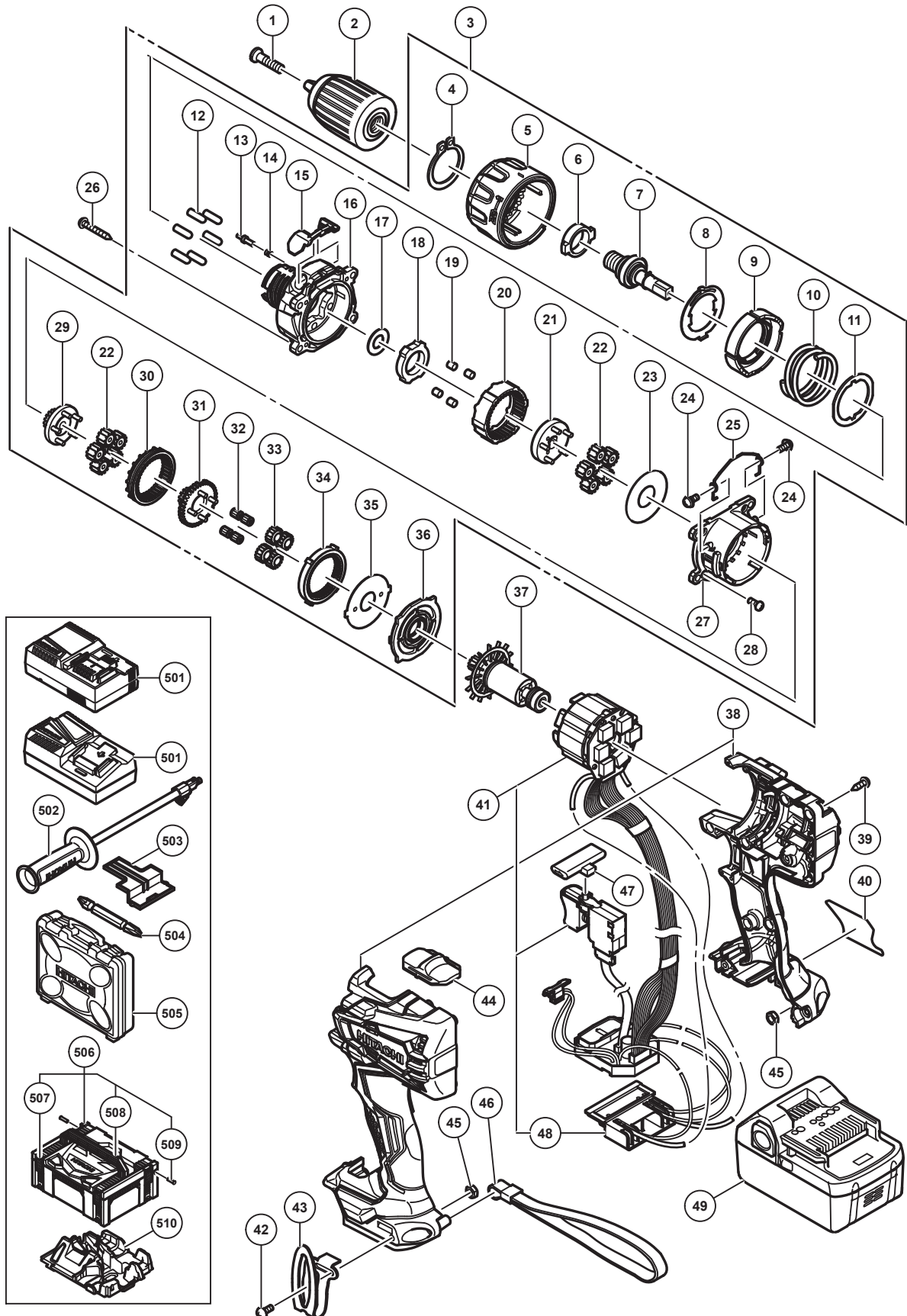


## ELECTRIC TOOL PARTS LIST

■ CORDLESS DRIVER DRILL  
Model DS 18DBL2

2015-10-30  
(E1)



**PARTS**

DS 18DBL2

| ITEM NO. | CODE NO. | DESCRIPTION                              | NO. USED | REMARKS            |
|----------|----------|------------------------------------------|----------|--------------------|
| 1        | 995344   | FLAT HD. SCREW (A) (LEFT HAND) M6 X 25   | 1        |                    |
| * 2      | 339721   | DRILL CHUCK 13VLRX-N                     | 1        |                    |
| * 2      | 339722   | DRILL CHUCK 13VLRX-N (USA)               | 1        |                    |
| 3        | 339738   | GEAR BOX ASS'Y                           | 1        | INCLUD.4-25,27-36  |
| 4        | 339736   | RETAINING RING FOR D30 SHAFT             | 1        |                    |
| 5        | 339740   | CLUTCH DIAL                              | 1        |                    |
| 6        | 339741   | METAL                                    | 1        |                    |
| 7        | 339743   | SPINDLE                                  | 1        |                    |
| 8        | 339744   | CLICK SPRING                             | 1        |                    |
| 9        | 339745   | NUT                                      | 1        |                    |
| 10       | 339746   | SPRING                                   | 1        |                    |
| 11       | 339747   | THRUST PLATE                             | 1        |                    |
| 12       | 333539   | PIN SET (6 PCS.)                         | 6        |                    |
| 13       | 339748   | STOPPER                                  | 2        |                    |
| 14       | 331886   | STOPPER SPRING                           | 2        |                    |
| 15       | 339749   | RUBBER CAP                               | 1        |                    |
| 16       | 339751   | FRONT CASE                               | 1        |                    |
| 17       | 337411   | WASHER (B)                               | 1        |                    |
| 18       | 339752   | LOCK RING                                | 1        |                    |
| 19       | 319744   | ROLLER                                   | 2        |                    |
| 20       | 339753   | RING GEAR                                | 1        |                    |
| 21       | 339754   | CARRIER                                  | 1        |                    |
| 22       | 339774   | PLANET GEAR (B) SET (5 PCS.)             | 10       |                    |
| 23       | 331892   | WASHER (A)                               | 1        |                    |
| 24       | 331895   | SCREW SET D2 (2 PCS.)                    | 2        |                    |
| 25       | 339755   | SHIFT ARM                                | 1        |                    |
| 26       | 305490   | TAPPING SCREW (W/FLANGE) D4 X 30 (BLACK) | 4        |                    |
| 27       | 339756   | REAR CASE                                | 1        |                    |
| 28       | 320087   | SCREW SET M3 X 12 (4 PCS.)               | 4        |                    |
| 29       | 339757   | PINION (C)                               | 1        |                    |
| 30       | 339758   | SLIDE RING GEAR                          | 1        |                    |
| 31       | 339759   | PINION (B)                               | 1        |                    |
| 32       | 331926   | NEEDLE BEARING SET (4 PCS.)              | 4        |                    |
| 33       | 334441   | PLANET GEAR (A) SET (4 PCS.)             | 4        |                    |
| 34       | 339760   | FIRST RING GEAR                          | 1        |                    |
| 35       | 339761   | WASHER (B)                               | 1        |                    |
| 36       | 339762   | MOTOR SPACER                             | 1        |                    |
| 37       | 339763   | ROTOR PINION SET                         | 1        |                    |
| 38       | 370831   | HOUSING (A). (B) SET                     | 1        |                    |
| 39       | 313687   | TAPPING SCREW (W/FLANGE) D3 X 16 (BLACK) | 10       |                    |
| 40       |          | NAME PLATE                               | 1        |                    |
| 41       | 339766   | WIRING ASS'Y                             | 1        | INCLUD.48          |
| 42       | 327001   | TRUSS HD. SCREW M4 (BLACK)               | 1        |                    |
| 43       | 332824   | HOOK                                     | 1        |                    |
| 44       | 334267   | SHIFT KNOB                               | 1        |                    |
| 45       | 327002   | LOCK NUT M4 (BLACK)                      | 2        |                    |
| * 46     | 306952   | STRAP (BLACK)                            | 1        | EXCEPT FOR USA,CAN |
| 47       | 339768   | PUSHING BUTTON                           | 1        |                    |
| 48       | 339769   | BATTERY TERMINAL                         | 1        |                    |
| * 49     | 338891   | BATTERY BSL 1860 (EUROPE,AUS,NZL)        | 2        | INCLUD.503         |

**PARTS**

DS 18DBL2

| ITEM NO. | CODE NO. | DESCRIPTION | NO. USED                          | REMARKS      |
|----------|----------|-------------|-----------------------------------|--------------|
| *        | 49       | 335790      | BATTERY BSL 1850 (EUROPE,AUS,NZL) | 2 INCLUD.503 |
| *        | 49       | 336265      | BATTERY BSL 1850 (CHN)            | 2 INCLUD.503 |
| *        | 49       | 330068      | BATTERY BSL 1830 (EUROPE,AUS,NZL) | 2 INCLUD.503 |
| *        | 49       | 336690      | BATTERY BSL 1830 (THA)            | 2 INCLUD.503 |
| *        | 49       | 339190      | BATTERY BSL 1825 (BRA)            | 2 INCLUD.503 |
|          |          |             |                                   |              |
|          |          |             |                                   |              |
|          |          |             |                                   |              |
|          |          |             |                                   |              |
|          |          |             |                                   |              |
|          |          |             |                                   |              |
|          |          |             |                                   |              |
|          |          |             |                                   |              |
|          |          |             |                                   |              |
|          |          |             |                                   |              |

**STANDARD ACCESSORIES**

| ITEM NO. | CODE NO. | DESCRIPTION | NO. USED                  | REMARKS          |
|----------|----------|-------------|---------------------------|------------------|
|          | 501      |             | CHARGER (MODEL UC 18YFSL) | 1                |
|          | 501      |             | CHARGER (MODEL UC 18YSL3) | 1                |
|          | 502      | 339770      | SIDE HANDLE               | 1                |
|          | 503      | 329897      | BATTERY COVER             | 1                |
|          | 504      | 983006      | + DRIVER BIT NO.2 65L     | 1                |
| *        | 505      | 339778      | CASE                      | 1                |
| *        | 506      | 336471      | CASE ASS'Y (STACKABLE)    | 1 INCLUD.507-509 |
| *        | 507      | 336472      | LATCH                     | 4                |
| *        | 508      | 336473      | HANDLE                    | 1                |
| *        | 509      | 336474      | HINGE                     | 2                |
| *        | 510      | 339776      | INNER TRAY                | 1                |
|          |          |             |                           |                  |
|          |          |             |                           |                  |
|          |          |             |                           |                  |
|          |          |             |                           |                  |

**OPTIONAL ACCESSORIES**

| ITEM NO. | CODE NO. | DESCRIPTION | NO. USED                   | REMARKS       |
|----------|----------|-------------|----------------------------|---------------|
|          | 601      | 955657      | - DRIVER BIT (A) 3MM X 70L | 1             |
|          | 602      | 955659      | - DRIVER BIT (A) 4MM X 70L | 1             |
|          | 603      | 955674      | - DRIVER BIT (A) 6MM X 70L | 1             |
|          | 604      | 983004      | + DRIVER BIT NO.1 65L      | 1             |
|          | 605      | 983011      | + DRIVER BIT NO.3 65L      | 1             |
| *        | 606      | 303709      | DEPTH GAUGE                | 1             |
| *        | 606      | 310331      | DEPTH GAUGE                | 1 FOR USA,CAN |
|          | 607      | 306927      | SILICONE RUBBER            | 1             |
|          |          |             |                            |               |
|          |          |             |                            |               |