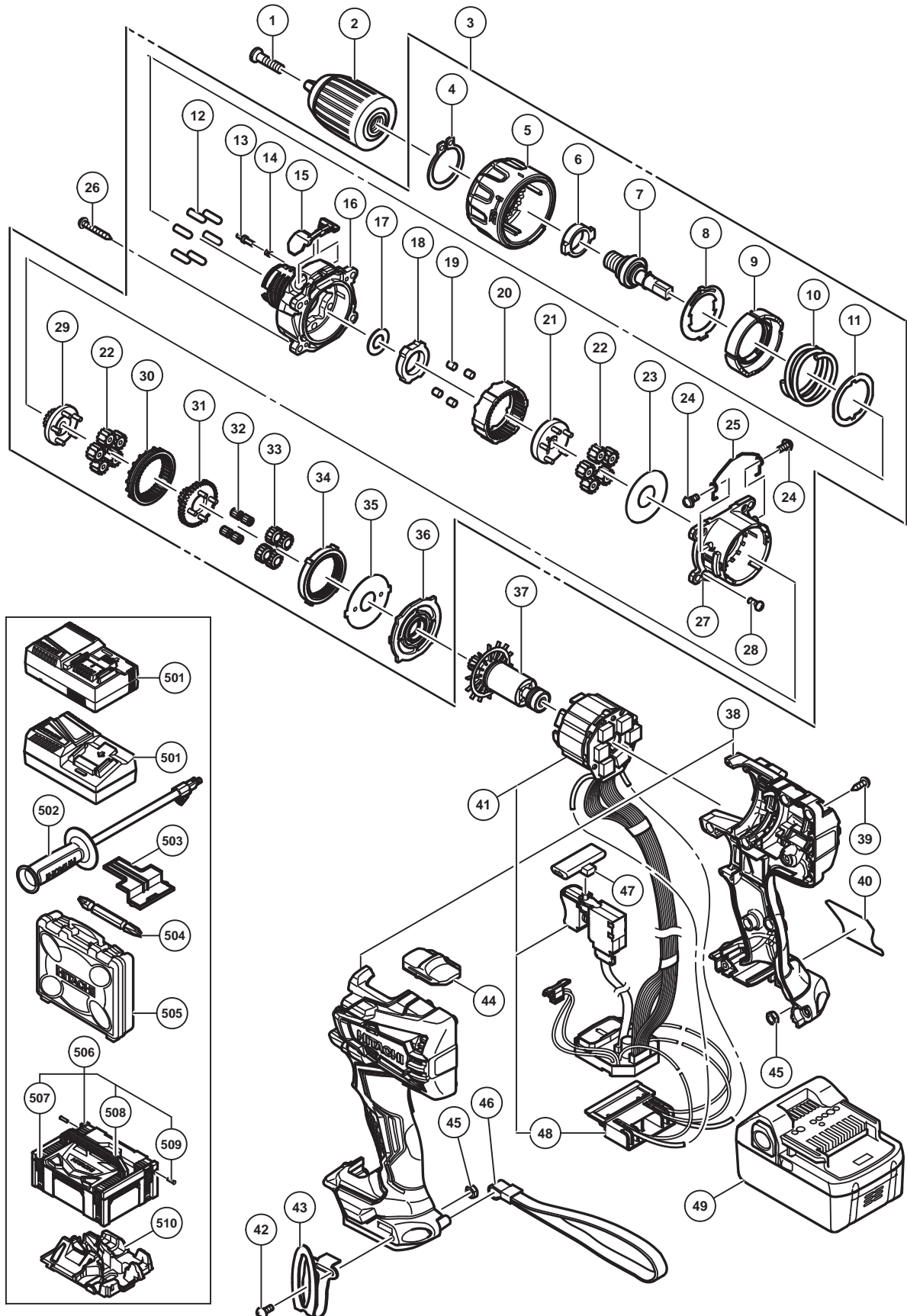


ELECTRIC TOOL PARTS LIST

■ CORDLESS DRIVER DRILL
Model DS 18DBL2

2015-10-30
(E1)



PARTS

DS 18DBL2

ITEM NO.	CODE NO.	DESCRIPTION	NO. USED	REMARKS
1	995344	FLAT HD. SCREW (A) (LEFT HAND) M6 X 25	1	
* 2	339721	DRILL CHUCK 13VLRX-N	1	
* 2	339722	DRILL CHUCK 13VLRX-N (USA)	1	
3	339738	GEAR BOX ASS'Y	1	INCLUD.4-25,27-36
4	339736	RETAINING RING FOR D30 SHAFT	1	
5	339740	CLUTCH DIAL	1	
6	339741	METAL	1	
7	339743	SPINDLE	1	
8	339744	CLICK SPRING	1	
9	339745	NUT	1	
10	339746	SPRING	1	
11	339747	THRUST PLATE	1	
12	333539	PIN SET (6 PCS.)	6	
13	339748	STOPPER	2	
14	331886	STOPPER SPRING	2	
15	339749	RUBBER CAP	1	
16	339751	FRONT CASE	1	
17	337411	WASHER (B)	1	
18	339752	LOCK RING	1	
19	319744	ROLLER	2	
20	339753	RING GEAR	1	
21	339754	CARRIER	1	
22	339774	PLANET GEAR (B) SET (5 PCS.)	10	
23	331892	WASHER (A)	1	
24	331895	SCREW SET D2 (2 PCS.)	2	
25	339755	SHIFT ARM	1	
26	305490	TAPPING SCREW (W/FLANGE) D4 X 30 (BLACK)	4	
27	339756	REAR CASE	1	
28	320087	SCREW SET M3 X 12 (4 PCS.)	4	
29	339757	PINION (C)	1	
30	339758	SLIDE RING GEAR	1	
31	339759	PINION (B)	1	
32	331926	NEEDLE BEARING SET (4 PCS.)	4	
33	334441	PLANET GEAR (A) SET (4 PCS.)	4	
34	339760	FIRST RING GEAR	1	
35	339761	WASHER (B)	1	
36	339762	MOTOR SPACER	1	
37	339763	ROTOR PINION SET	1	
38	339765	HOUSING (A). (B) SET	1	
39	313687	TAPPING SCREW (W/FLANGE) D3 X 16 (BLACK)	10	
40		NAME PLATE	1	
41	339766	WIRING ASS'Y	1	INCLUD.48
42	327001	TRUSS HD. SCREW M4 (BLACK)	1	
43	332824	HOOK	1	
44	334267	SHIFT KNOB	1	
45	327002	LOCK NUT M4 (BLACK)	2	
* 46	306952	STRAP (BLACK)	1	EXCEPT FOR USA,CAN
47	339768	PUSHING BUTTON	1	
48	339769	BATTERY TERMINAL	1	
* 49	338891	BATTERY BSL 1860 (EUROPE,AUS,NZL)	2	INCLUD.503

PARTS

DS 18DBL2

ITEM NO.	CODE NO.	DESCRIPTION	NO. USED	REMARKS
*	49	335790	BATTERY BSL 1850 (EUROPE,AUS,NZL)	2 INCLUD.503
*	49	336265	BATTERY BSL 1850 (CHN)	2 INCLUD.503
*	49	330068	BATTERY BSL 1830 (EUROPE,AUS,NZL)	2 INCLUD.503
*	49	336690	BATTERY BSL 1830 (THA)	2 INCLUD.503
*	49	339190	BATTERY BSL 1825 (BRA)	2 INCLUD.503

STANDARD ACCESSORIES

ITEM NO.	CODE NO.	DESCRIPTION	NO. USED	REMARKS
	501		CHARGER (MODEL UC 18YFSL)	1
	501		CHARGER (MODEL UC 18YSL3)	1
	502	339770	SIDE HANDLE	1
	503	329897	BATTERY COVER	1
	504	983006	+ DRIVER BIT NO.2 65L	1
*	505	339778	CASE	1
*	506	336471	CASE ASS'Y (STACKABLE)	1 INCLUD.507-509
*	507	336472	LATCH	4
*	508	336473	HANDLE	1
*	509	336474	HINGE	2
*	510	339776	INNER TRAY	1

OPTIONAL ACCESSORIES

ITEM NO.	CODE NO.	DESCRIPTION	NO. USED	REMARKS
	601	955657	- DRIVER BIT (A) 3MM X 70L	1
	602	955659	- DRIVER BIT (A) 4MM X 70L	1
	603	955674	- DRIVER BIT (A) 6MM X 70L	1
	604	983004	+ DRIVER BIT NO.1 65L	1
	605	983011	+ DRIVER BIT NO.3 65L	1
*	606	303709	DEPTH GAUGE	1
*	606	310331	DEPTH GAUGE	1 FOR USA,CAN
	607	306927	SILICONE RUBBER	1