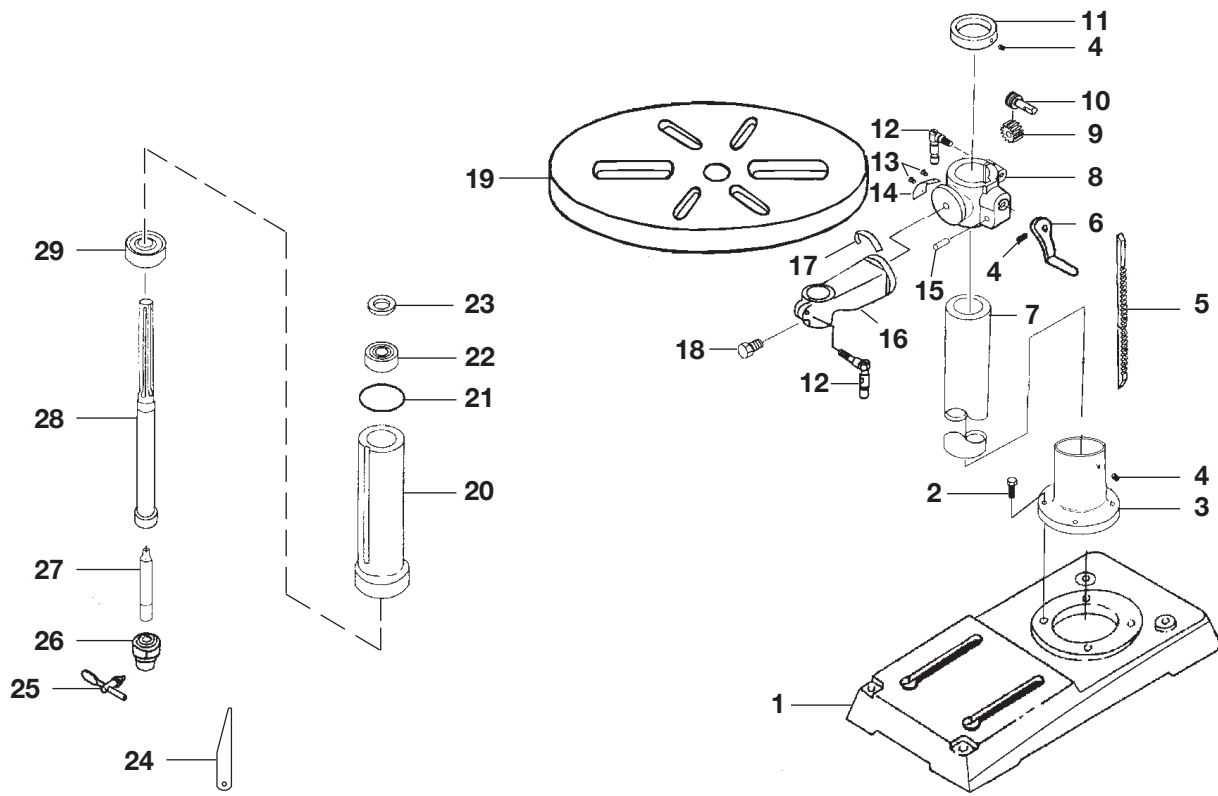


FIGURE A



RYOBI 12 in. (305 mm) DRILL PRESS – MODEL NUMBER DP120

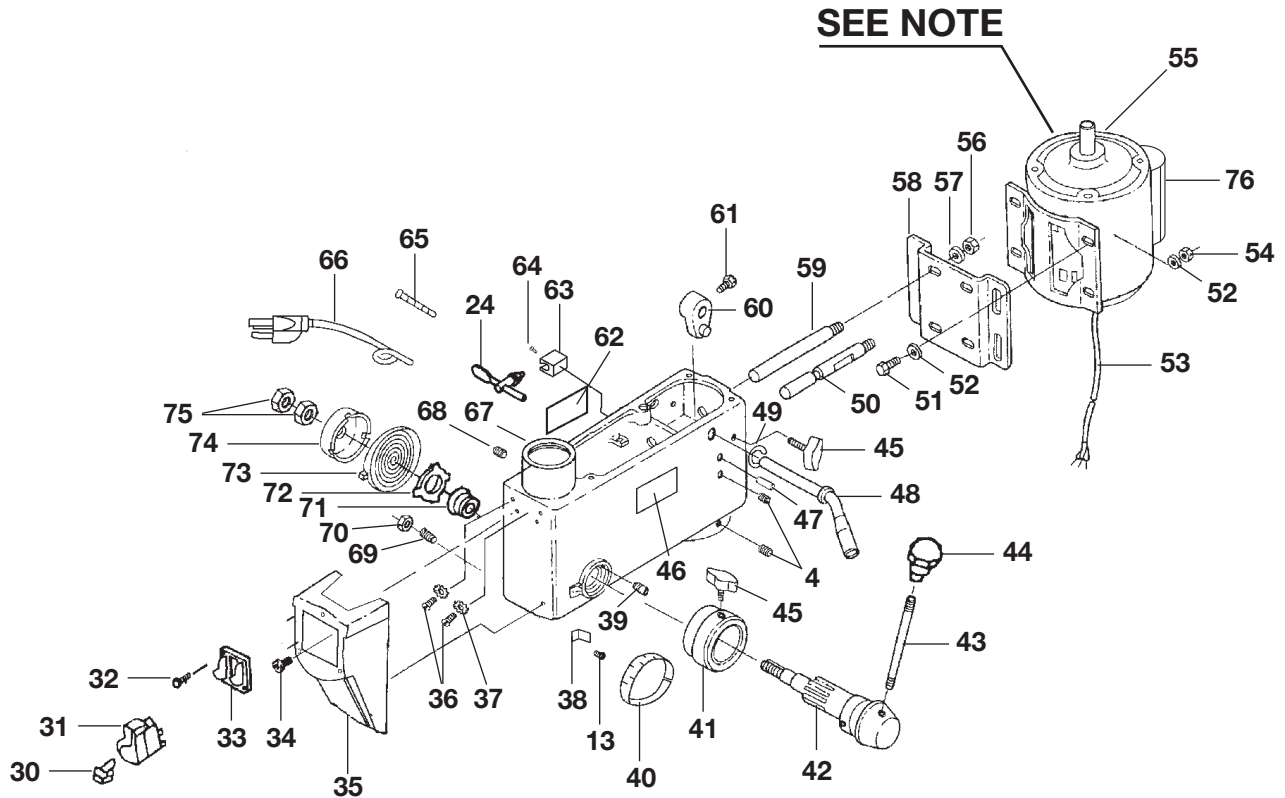
The model number will be found on a plate attached to the motor housing. Always mention the model number in all correspondence regarding your **Drill Press** or when ordering repair parts.

PARTS LIST FOR FIGURE A

Key No.	Part Number	Description	Qty.
1	13401001	BASE	1
2	TDP12B03008	* SCREW, HEX HEAD (M10 X 25 mm).....	4
3	13401002A	BASE COLLAR	1
4	TDP12B03011	* SCREW, HEX HEAD (M8 X 8 mm).....	5
5	13201010A	GEAR RACK	1
6	089140200701	TABLE CRANK HANDLE ASSEMBLY	1
7	13401003A	TUBE COLUMN/PEDESTAL.....	1
8	13401004B	TABLE SUPPORT W/SCALE	1
9	13201006	GEAR.....	1
10	13201008	ELEVATION WORM	1
11	13401011A	COLUMN COLLAR	1
12	16101013B	TABLE CLAMP	2
13	TDP12B03002	* SCREW (M4 X 6 mm)	3
14	13406002A	INDICATOR FOR TABLE.....	1
15	13201007	SHAFT GEAR	1
16	13401005	TABLE ARM.....	1
17	13406001	SCALE FOR BRACKET	1
18	TDP12B03009	* SCREW, HEX HEAD (M12 X 25 mm).....	1
19	13401014B	TABLE.....	1
20	13303002	SPINDLE HOUSING	1
21	13303006	GASKET	1
22	TDP12B02001	BEARING BALL	2
23	TDP12B18001	LOCKING RING.....	1
24	16103008	CHUCK TOOL	1
25	13103006M-1	CHUCK KEY.....	1
26	13103006M	CHUCK.....	1
27	13403007	ARBOR	1
28	13303001	SPINDLE.....	1
29	TDP12B02002	BEARING.....	1

* Standard Hardware Item – May Be Purchased Locally

FIGURE B



NOTE: The assembly shown represents an important part of the double insulated system. To avoid the possibility of alteration or damage to the system, service should be performed by your nearest Ryobi Authorized Service Center. For the service center nearest you call 1-800-525-2579.

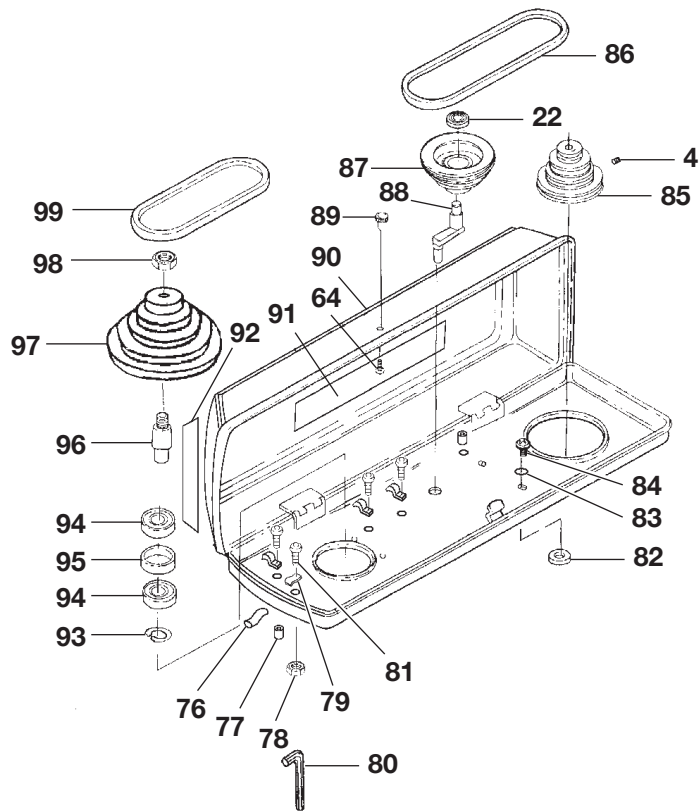
RYOBI 12 in. (305 mm) DRILL PRESS – MODEL NUMBER DP120

The model number will be found on a plate attached to the motor housing. Always mention the model number in all correspondence regarding your **Drill Press** or when ordering repair parts.

PARTS LIST FOR FIGURE B

Key No.	Part Number	Description	Qty.
30	16102010G-1	SWITCH KEY	1
31	16102010G	SWITCH.....	1
32	TDP07005	* TAPPING SCREW (ST 4.2 X 9.5 mm)	2
33	13202009F	SWITCH PLATE	1
34	TDP07001	* SCREW (M5 X 14 mm)	2
35	13202008B-1	SWITCH HOUSING	1
36	TDP07001	* SCREW, PAN HEAD (M5 X 6 mm)	2
37	TDP08001	LOCK WASHER.....	2
38	13406003	STROKE INDICATOR.....	1
39	16104010	STOP PIN	1
40	13406004	DEPTH STOP SCALE RING	1
41	13304003	DEPTH STOP RING.....	1
42	13304000	HUB.....	1
43	13204005A	FEED HANDLE	3
44	13304011C	KNOB	3
45	13402005	TENSION KNOB	3
46	13206007J	WARNING LABEL.....	1
47	TDP09001	ROLL PIN.....	2
48	13402004	BELT TENSION HANDLE.....	1
49	TDP12B10001	SHAFT RETAINER	1
50	13402002	MOTOR SUPPORT	1
51	TDP01001	* SCREW (M8 X 20 mm)	4
52	TDP11002	WASHER	8
53	13302016Y	MOTOR CORD	1
54	TDP06001	HEX NUT	4
55	YCG77S4-01	MOTOR.....	1
56	TDP06002	HEX NUT	2
57	TDP11001	LOCK WASHER.....	2
58	13402007	MOTOR SUPPORT.....	1
59	13402003	MOTOR SUPPORT.....	1
60	16102006	ADJUSTING LEVER.....	1
61	TDP12B03007	* SCREW (M8 X 16 mm)	1
62	13406008A	DATA LABEL	1
63	16103011A	KEY HOLDER	1
64	TDP07002	* SCREW (M5 X 12 mm)	2
65	TDP12B20001	CORD TIE	1
66	13302015B-3	POWER CORD	1
67	13402001D	HEAD	1
68	TDP03002	* SCREW (M8 X 8 mm)	1
69	13202021	SPECIAL SET SCREW	1
70	TDP06001	HEX NUT	1
71	13204006	SPRING SEAT.....	1
72	16104007A	SPRING RETAINER	1
73	16104009	TORSION SPRING	1
74	16104008	SPRING CAP	1
75	TDP12B06005	HEX NUT	2
76	089140300082	CAPACITOR (DP120 MOTOR).....	1

FIGURE C



RYOBI 12 in. (305 mm) DRILL PRESS – MODEL NUMBER DP120

The model number will be found on a plate attached to the motor housing. Always mention the model number in all correspondence regarding your **Drill Press** or when ordering repair parts.

PARTS LIST FOR FIGURE C

Key No.	Part Number	Description	Qty.
76	13402027	CLAMP COVER.....	3
77	20105012	RUBBER BUSHING.....	2
78	TDP12B06001	NUT	3
79	13202014A	CORD CLAMP.....	4
80	TDP04001	HEX WRENCH.....	1
81	TDP07004	* SCREW (M5 X 10 mm)	4
82	13105009	FOAM WASHER.....	4
83	TDP12B11004	WASHER	4
84	TDP12B03006	* SCREW (M6 X 8 mm)	4
85	13405005A	MOTOR PULLEY	1
86	13405007B	BELT	1
87	13405008A	IDLER PULLEY.....	1
88	13205009	IDLER PIVOT	1
89	13205008	KNOB	1
90	13405000	PULLEY/BELT HOUSING.....	1
91	13406009C	SPEED CHART.....	1
92	13406006F	LOGO PLATE.....	1
93	TDP10002	SHAFT RETAINER	1
94	TDP02001	BEARING.....	2
95	13302023A	SPACER	1
96	13302022	PULLEY INSERT	1
97	13405006A	SPINDLE PULLEY	1
98	13302025	NUT	1
99	13405007	BELT	1
	983000040	OPERATOR'S MANUAL	
	983000040R	REPAIR SHEET (REV:02)	
	06-28-06		