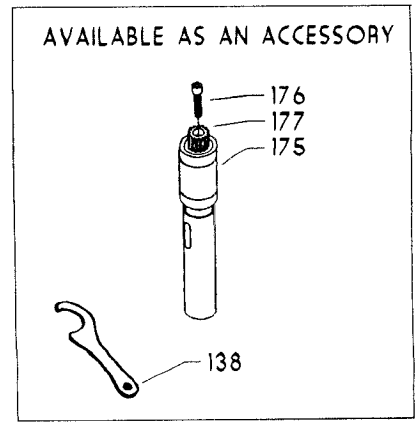
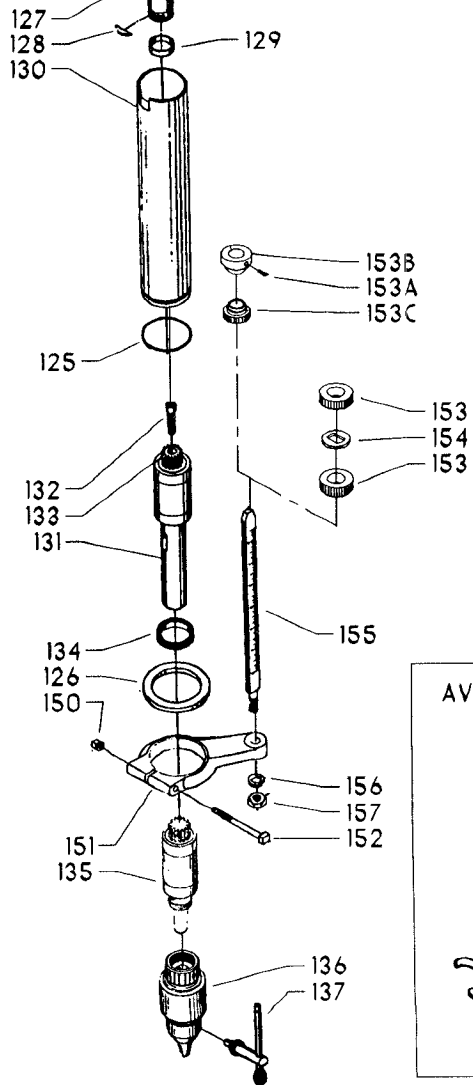
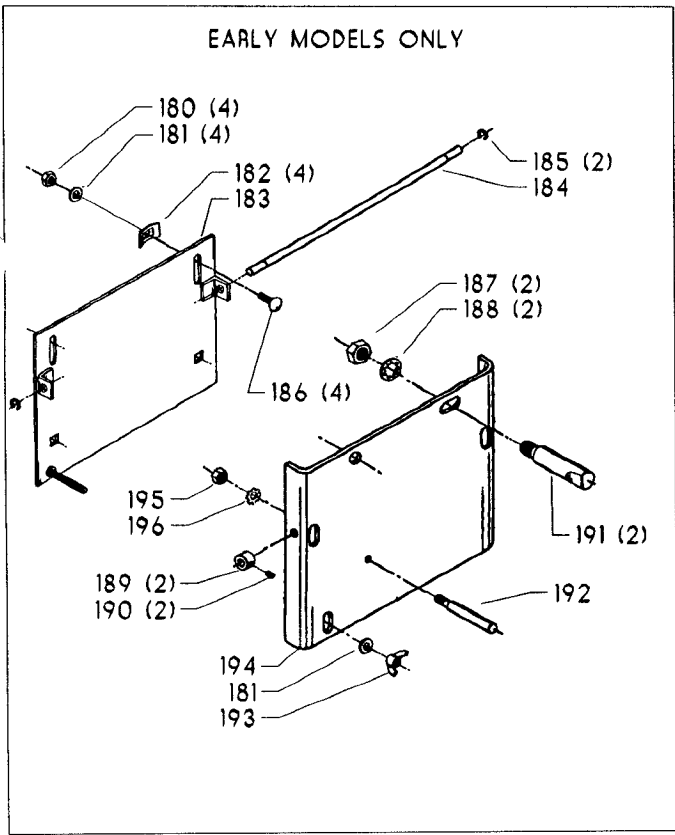
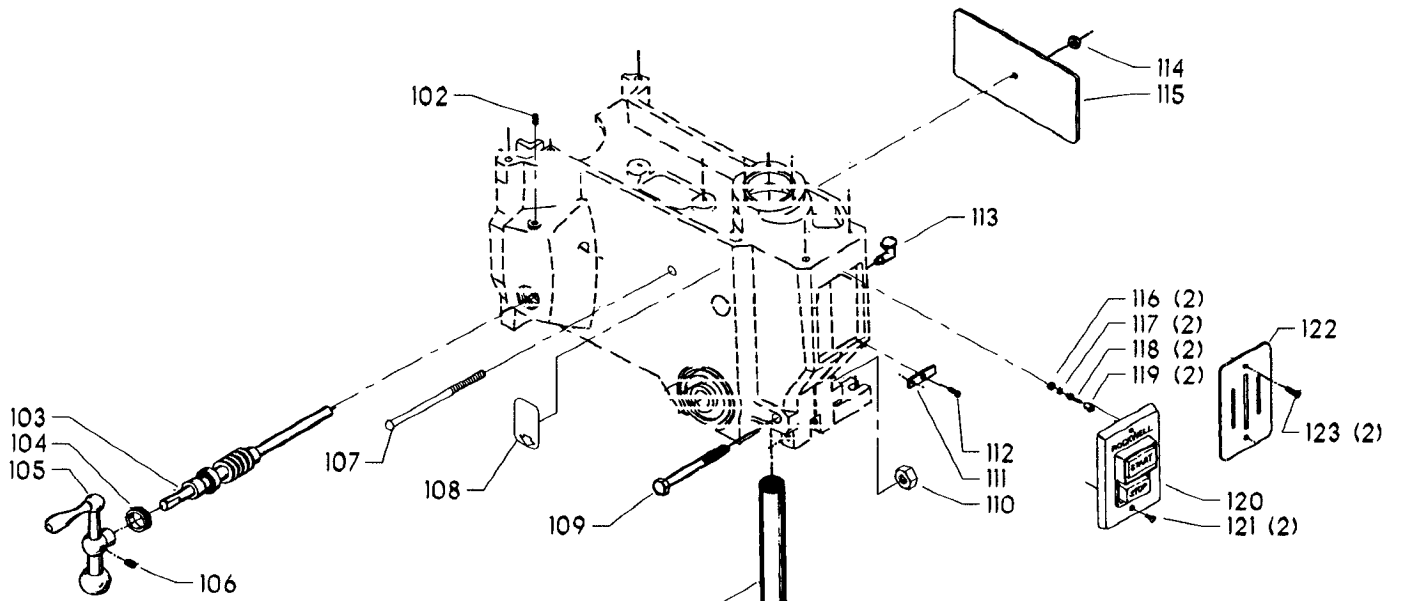


# REPLACEMENT PARTS

REF NO	PART NUMBER	DESCRIPTION	REF NO	PART NUMBER	DESCRIPTION
1	402-07-054-5002	UPPER GUARD	40	402-07-357-5022	HEAD ASSY, INCL:
1A	402-00-752-0001	WARNING LABEL	41	402-07-020-5005	CAP
2	901-02-120-7510	1/4-20 X 3/4" TRUSS HD SCREW	42	901-01-060-0615	7/16-14 X 1 3/4" HEX HD SCREW
3	901-02-120-7504	1/4-20 X 5/8" TRUSS HD SCREW	43	901-01-060-3114	7/16-14 X 2 1/2" HEX HD SCREW
4	901-06-450-2250	#04 X 3/16" ROUND HD SCREW	44	901-04-020-0308	5/16-18 X 3/4" SQ HD SET SCREW
5	402-05-137-0001	NAMEPLATE	45	901-04-190-0207	5/16-18 X 1/2" HEX SOC SET SCREW
6	928-09-010-7398	SNAP SPRING	46	901-04-020-0303	5/16-18 X 1 1/4" SQ HD SET SCREW
7	902-01-210-1079	LOCK NUT	47	904-07-010-5575	5/8" FIBER WASHER
8	902-01-120-1034	1/4-20 HEX NUT	48	402-05-106-5010	COMPOUND GEAR SHAFT
9	904-01-010-1614	FLAT WASHER	49	402-07-051-5002	COMPOUND GEAR
10	402-07-059-5002	HINGE	50	402-07-430-5001	SLO-SPEED PULLEY, INCL:
11	901-01-060-0626	1/4-20 X 3/4" HEX HD SCREW	51	901-04-190-0201	5/16-18 X 5/16" HEX SOC SET SCREW
12	902-01-010-1300	5/16-18 HEX NUT	52	901-20-241-6107	#10-32 X 3/8" HEX HD WASHER SCREW
13	904-01-010-1620	FLAT WASHER	53	402-07-072-5006	COVER PLATE
14	401-04-314-5010	REAR BRACKET	*	402-07-406-5002	SPINDLE SHAFT, CONST OF:
15	402-07-054-5001	LOWER GUARD	54	904-15-010-7025	EXT RET RING
16	901-02-010-0506	5/16-18 X 5/8" ROUND HD SCREW	55	920-04-021-5116	BALL BEARING
17	401-04-014-5007	FRONT BRACKET	56	926-01-051-6349	PULLEY
18	901-01-060-0605	5/16-18 X 1/2" HEX HD SCREW	57	920-04-020-5360	BALL BEARING
20	1200041	SLO-SPEED V-BELT	58	402-07-106-5005	SPINDLE
21	49-051	HI-SPEED V-BELT	59	927-01-010-2600	WOODRUFF KEY
22	41-815	SLO-SPEED MOTOR PULLEY, INCL:	60	928-06-010-7352	SPRING WASHER
23	901-04-190-0201	5/16-18 X 5/16" HEX SOC SET SCREW	61	927-03-010-2661	KEY
24	41-825	HI-SPEED MOTOR PULLEY, INCL:	62	952-01-121-3274	SPRING PIN
25	901-04-190-0201	5/16-18 X 5/16" HEX SOC SET SCREW	*	402-07-406-5018	PINION ASSY, CONST OF:
*	1200040	MOTOR PLATE ASSY, CONST OF:	63	402-07-106-5026	PINION
26	904-15-013-1024	RET RING	64	402-04-107-5002	HUB
27	402-07-106-5006	SHAFT	65	905-01-010-6745	3/16" X 1 7/8" SPRING PIN
28	1200037	PLATE ASSY	66	1202603	STUD W/BALL, INCL:
29	901-11-020-0834	5/16-18 X 3/4" CARRIAGE HD SCREW	67	1201642	KNOB - SLIP ON <i>(Current Models Only)</i>
30	902-03-000-2951	5/16-18 PUSH NUT	67A	931-01-011-3519	HANDLE BALL - SCREW ON <i>(Early Models Only)</i>
31	902-01-020-5435	5/16-18 JAM NUT	68	902-01-200-9706	1/4-20 HEX NUT
32	1200035	PLATE ASSY	69	901-03-013-1026	1/4-20 X 1 3/4" HEX SOC HD SCREW
33	902-04-010-1403	5/16-18 WING NUT	70	961-01-010-7473	PLUG
34	901-01-060-0649	5/16-18 X 1" HEX HD SCREW <i>(Used to mount motor starter)</i>	71	905-01-010-6715	3/16" X 5/8" SPRING PIN
35	902-03-000-2951	5/16-18 PUSH NUT <i>(Used to mount motor starter)</i>	72	401-02-079-5001	PINION RETAINER
37	904-01-010-1620	FLAT WASHER	73	901-03-040-8015	1/4-20 X 1/2" BUTTON HD SCREW
38	902-01-010-1300	5/16-18 HEX NUT	*	402-07-388-5002	STOP ASSY, CONST OF:
			74	928-08-012-1766	RETURN SPRING
			75	401-04-031-5001	SPRING HOUSING
			76	904-01-010-1622	FLAT WASHER
			77	902-01-020-1226	5/8-18 JAM NUT

\* NOT SHOWN ASSEMBLED



# REPLACEMENT PARTS

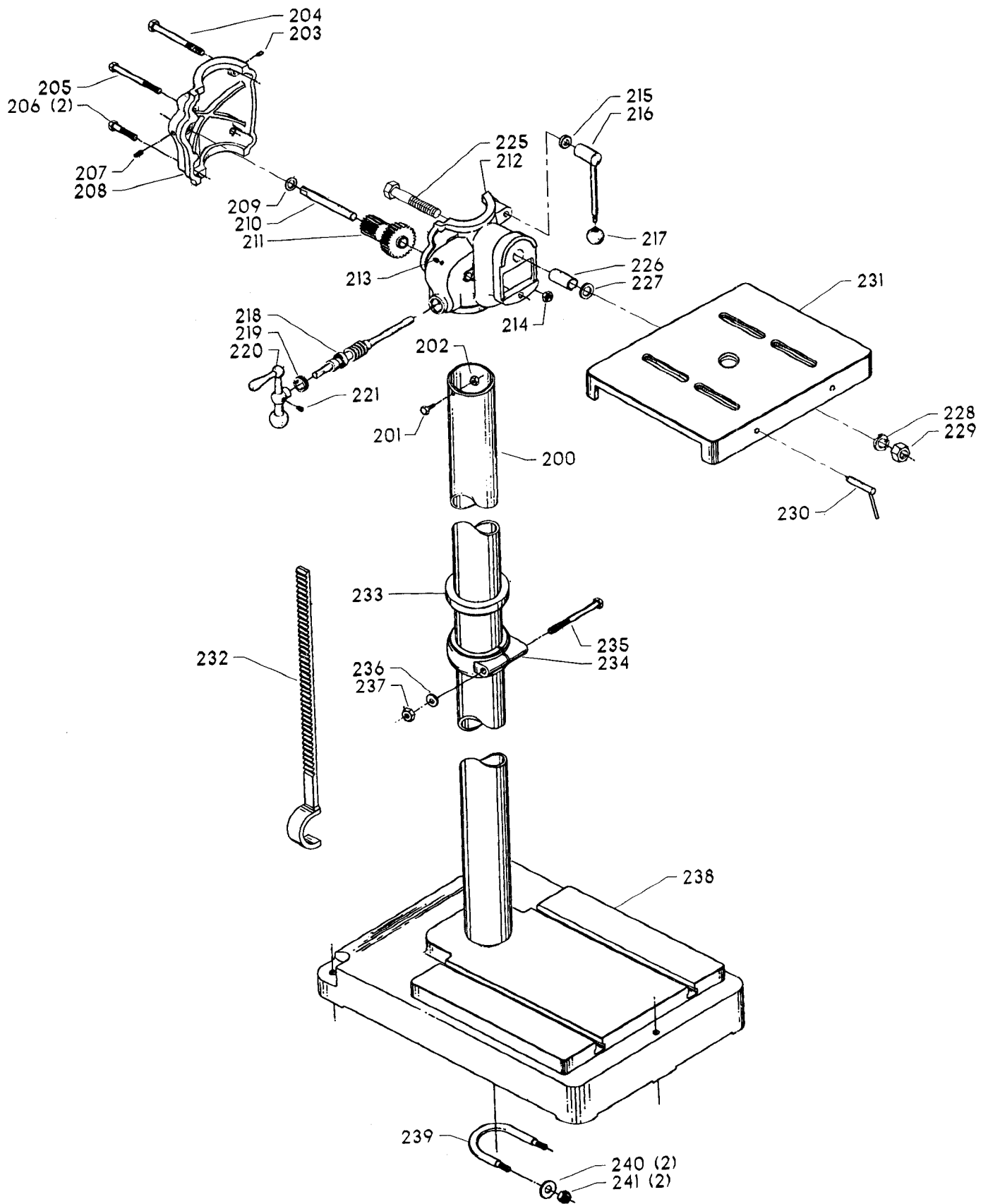
REF NO	PART NUMBER	DESCRIPTION
200	17-763	3-1/2 X 62" COLUMN - BENCH MODEL
200	17-764	3-1/2 X 38-1/2" COLUMN - FLOOR MODEL
201	901-01-060-0612	1/4-20 X 5/8" HEX HD SCREW <i>(Early Models Only)</i>
202	902-01-120-1034	1/4-20 HEX NUT <i>(Early Models Only)</i>
*	402-07-314-5001	TABLE BRACKET, CONST OF:
203	901-04-190-0201	5/16-18 X 5/16" HEX SOC SET SCREW
204	901-01-060-0643	1/2-13 X 4" HEX HD SCREW
205	901-01-060-0637	7/16-14 X 3 3/4" HEX HD SCREW
206	901-01-060-0615	7/16-14 X 1 3/4" HEX HD SCREW
207	901-04-190-0207	5/16-18 X 1/2" HEX SOC SET SCREW
208	402-07-020-5003	CAP
209	904-07-010-5575	5/8" FIBER WASHER
210	402-05-106-5010	SHAFT
211	402-07-051-5002	COMPOUND GEAR
212	402-07-014-5006	BRACKET
213	901-04-150-0205	5/16-18 X 1/4" HEX SOC SET SCREW
214	902-01-020-5438	7/16-14 JAM NUT
215	904-10-031-3893	WASHER
216	402-05-327-5002	CLAMP HANDLE, INCL:
217	1201642	KNOB - SLIP ON <i>(Current Models Only)</i>
217	931-01-011-3519	HANDLE BALL - SCREW ON <i>(Early Models Only)</i>
218	402-05-406-5008	WORM ASSY
219	902-07-030-7179	BEARING CLOSURE NUT
220	930-05-991-4787	BALL CRANK, INCL:
221	901-04-150-0206	5/16-18 X 5/16" HEX SOC SET SCREW
225	901-01-060-0630	3/4-10 X 3 1/2" HEX HD SCREW
226	402-05-105-5002	SLEEVE
227	904-01-031-4954	FLAT WASHER
228	904-02-020-1707	LOCK WASHER
229	902-01-010-1245	3/4-10 HEX NUT
230	402-05-371-5002	INDEX PIN
231	17-829	TILT TABLE
232	402-07-351-5001	GEAR RACK
233	920-52-991-3936	THRUST BEARING
234	402-05-389-5001	COLLAR ASSY, INCL:
235	901-01-060-0631	7/16-14 X 4" HEX HD SCREW
236	904-10-031-2097	WASHER
237	902-01-040-1004	7/16-14 JAM NUT
238	402-07-005-5002	BASE
239	402-07-027-5001	U-BOLT
240	904-01-010-1618	9/16" FLAT WASHER
241	902-01-010-1282	1/2-13 HEX NUT

\* NOT SHOWN ASSEMBLED

## STANDARD SAFETY EQUIPMENT

In order to promote tool safety, Delta International Machinery Corp. strictly enforces the policy of repairing or replacing any damaged or missing standard safety equipment on machines presented to Delta Authorized Service Center for service/repairs. Any product which is presented to a Delta Authorized Service Center for repairs which contains missing or damaged standard safety equipment will have that equipment repaired or replaced and the customer will be charged for any such service/repairs. Customers can avoid such charges only if the missing safety component is supplied to the service center at the time of repair.

*This parts list is provided to aid in obtaining service parts. Copies of the instruction and maintenance literature can be obtained through the Delta Technical Publications Department or through your local service outlet.*



# REPLACEMENT PARTS

REF NO	PART NUMBER	DESCRIPTION	REF NO	PART NUMBER	DESCRIPTION
102	901-04-150-0205	5/16-18 X 1/4" HEX SOC SET SCREW	138	15-838	SPANNER WRENCH
103	402-05-406-5008	WORM SHAFT	*	402-07-388-5002	STOP ASSY, INCL:
104	902-07-030-7179	BEARING CLOSURE NUT	150	902-01-120-1034	1/4-20 HEX NUT
105	930-05-991-4787	BALL CRANK, INCL:	151	402-07-014-5002	BRACKET
106	901-04-150-0206	5/16-18 X 5/16" HEX SOC SET SCREW	152	901-11-011-1453	1/4-20 X 2 1/2" SQUARE HD SCREW
107	901-02-010-0912	1/4-20 X 4 1/2" ROUND HD SCREW	153	402-12-068-5001	KNURLED NUT ( <i>Current Models Only</i> )
108	960-03-010-2413	LUBE PLATE	153A	901-04-260-1534	#06-32 X 1/4" THUMB SCREW ( <i>Early Models Only</i> )
109	901-01-060-0633	7/16-14 X 3 1/4" HEX HD SCREW	153B	402-04-012-5001	HOLDING NUT ( <i>Early Models Only</i> )
110	902-01-010-5437	7/16-14 HEX NUT	153C	402-04-088-5005	MICRO NUT - ENGLISH ( <i>Early Models Only</i> )
111	438-01-021-0081	PLATE ( <i>Early Models Only</i> )	153C	402-04-088-5006	MICRO NUT - METRIC ( <i>Early Models Only</i> )
112	901-06-120-3019	#06-32 X 1/2" ROUND HD SCREW ( <i>Early Models Only</i> )	154	904-01-103-1317	FLAT WASHER ( <i>Current Models Only</i> )
113	907-01-050-5239	OILER	155	402-04-108-5007	STOP ROD
114	902-01-120-1034	1/4-20 HEX NUT	156	904-02-020-1704	3/8" LOCK WASHER ( <i>Early Models Only</i> )
115	402-07-072-5001	COVER PLATE	157	902-01-020-5433	3/8-16 JAM NUT
116	902-01-120-9232	#06-32 HEX NUT			
117	904-03-030-1788	EXT TOOTH WASHER			
118	402-07-111-5002	STUD			
119	402-07-104-5007	SPACER	175	17-880	<b>AVAILABLE AS AN ACCESSORY</b> LOWER SPINDLE - #3 MORSE TAPER, INCL:
120	1340100	SWITCH COVER ASSY	176	901-03-010-0750	5/16-18 X 1" HEX SOC HD SCREW
121	901-02-010-0567	#06-32 X 1/4" ROUND HD SCREW	177	402-07-051-5005	PINNION GEAR
122	402-04-031-0001	SWITCH OPENING COVER			
123	901-06-120-3019	#06-32 X 1/2" ROUND HD SCREW			
125	904-15-021-4138	GARTER RING			
126	904-07-061-2942	CUSHION RING	180	902-01-010-1300	5/16-18 HEX NUT
*	402-07-377-5001	QUILL ASSY - #2 MORSE TAPER, CONST OF:	181	904-01-010-1620	FLAT WASHER
127	402-05-105-5004	DRIVE SLEEVE	182	902-03-000-2951	5/16-18 PUSH NUT
128	927-01-201-3720	SEGMENT KEY	183	1200037	PLATE ASSY
129	904-15-021-4139	GARTER SPRING	184	402-07-106-5006	SHAFT
130	402-07-077-5001	QUILL	185	904-15-011-7105	EXT RET RING
131	17-881	LOWER SPINDLE - #2 MORSE TAPER, INCL:	186	901-11-020-0834	5/16-18 X 3/4" CARRIAGE HD SCREW
132	901-03-010-0750	5/16-18 X 1" HEX SOC HD SCREW	187	902-01-020-1226	5/8-18 JAM NUT
133	402-07-051-5005	PINNION GEAR	188	904-03-020-1674	LOCK WASHER
134	902-07-020-7176	BEARING CLOSURE NUT	189	426-03-388-0001	COLLAR ASSY, INCL:
*	402-07-377-5002	QUILL ASSY, WITH 1/2" CHUCK, INCL:	190	901-04-150-0208	1/4-20 X 1/4" HEX SOC SET SCREW
127	402-05-105-5004	DRIVE SLEEVE	191	402-07-071-5003	PIN
128	927-01-201-3720	SEGMENT KEY	192	402-07-071-5001	PIN
129	904-15-021-4139	GARTER SPRING	193	902-04-010-1403	5/16-18 WING NUT
130	402-07-077-5001	QUILL	194	1200035	PLATE ASSY
134	902-07-020-7176	BEARING CLOSURE NUT	195	902-01-010-1207	3/8-24 NUT
135	17-882	LOWER SPINDLE - #33 MALE TAPER	196	904-03-020-1789	3/8" INT TOOTH WASHER
136	15-830	1/2" CHUCK, INCL:	*		NOT SHOWN ASSEMBLED
137	65-104	KEY			