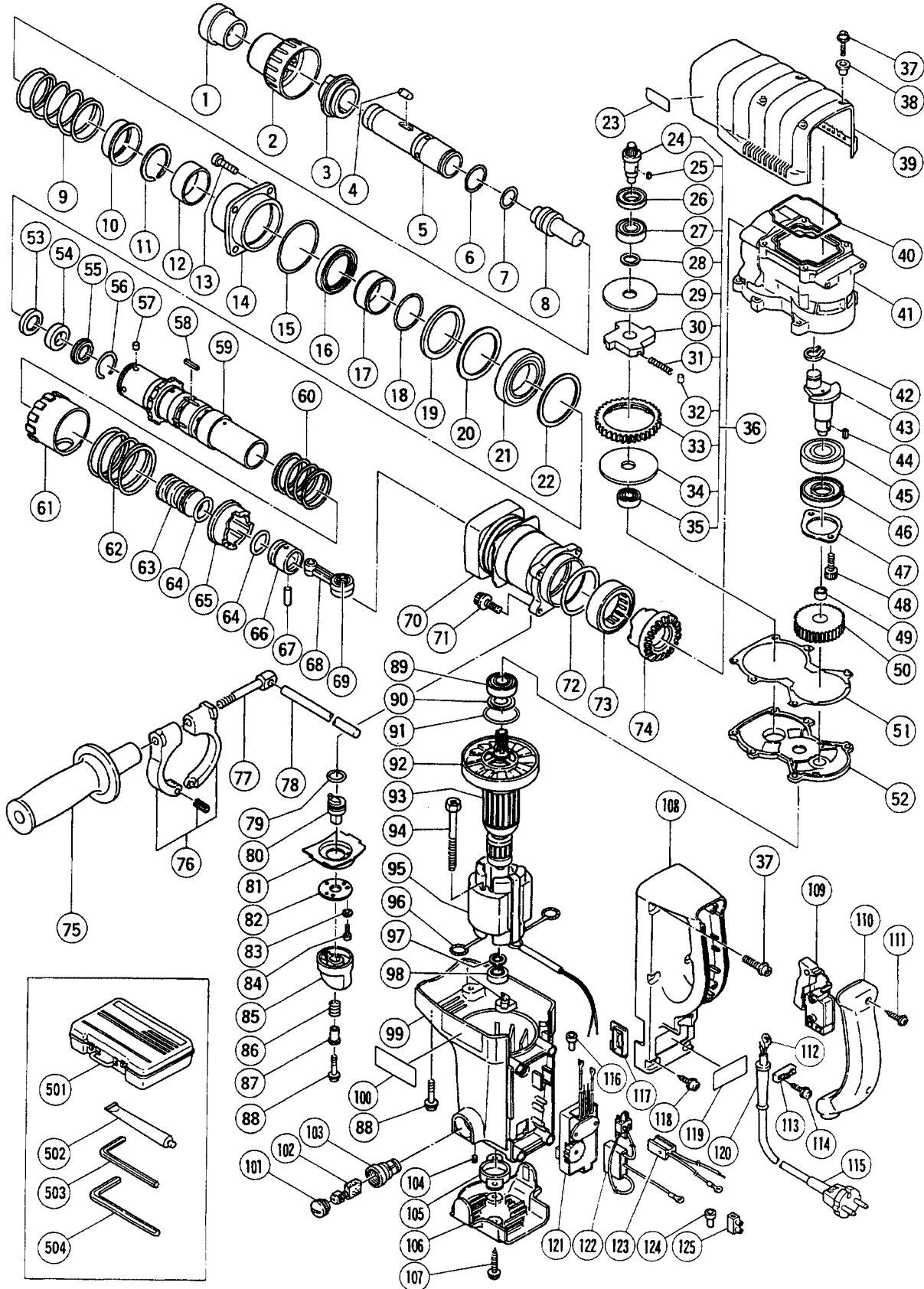


ELECTRIC TOOL PARTS LIST

■ HAMMER DRILL
Model DH 40MB

1997 · 2 · 20
(E1)



PARTS

DH 40MB

ITEM NO.	CODE NO.	DESCRIPTION	NO. USED	REMARKS
1	313-415	FRONT CAP	1	
2	313-965	GRIP	1	
3	313-413	NEEDLE HOLDER	1	
4	313-421	NEEDLE ROLLER D8X20	2	
5	313-398	RETAINER SLEEVE	1	
6	313-397	O - RING (B)	1	
7	313-396	O - RING (C)	2	
8	313-395	SECOND HAMMER	1	
9	313-419	RETAINER SPRING	1	
10	313-422	SPRING HOLDER	1	
11	313-420	RETAINING RING D38	1	
12	313-418	SLEEVE (A)	1	
13	993-040	NYLOCK HIGH TENSION BOLT M7X25	4	
14	313-405	FRONT COVER	1	
15	956-996	O - RING (1AS - 60)	1	
16	313-404	OIL SEAL	1	
17	313-416	SLEEVE (B)	1	
18	313-417	O - RING (A)	1	
19	981-859	URETHANE RING	1	
20	313-406	WASHER	1	
21	313-423	BALL BEARING 6908DDUCM PS2 - L	1	
22	313-409	WASHER (A)	1	
23		SDS MAX LABEL	1	
24	313-052	BEVEL PINION	1	
25	944-109	FEATHER KEY 3X3X8	1	
26	313-050	OIL SEAL (A)	1	
27	600-2DD	BALL BEARING 6002DDUCMPS2S	1	
28	313-058	WASHER	1	
29	313-053	WASHER (A)	1	
30	313-055	GEAR HOLDER	1	
31	313-056	SPRING (C)	4	
32	313-057	NEEDLE PIN D6X6	4	
33	313-054	SECOND GEAR	1	
34	313-059	SPACER	1	
35	629-VVM	BALL BEARING 629VVMC2EPS2L	1	
36	313-051	SLIP CLUTCH ASS'Y	1	INCLUD.24,25,27 - 35
37	313-082	NYLOCK BOLT (W/FLANGE) M5X16	6	
38	991-711	DISTANCE PIECE (B)	4	
39	313-083	CRANK CASE COVER ASS'Y	1	INCLUD.38
40	313-084	RUBBER SEAL	1	
41	313-045	CRANK CASE	1	
42	939-542	RETAINING RING FOR D12 SHAFT (10 PCS.)	1	
43	313-046	CRANK SHAFT	1	
44	940-533	FEATHER KEY 3X3X10	1	
45	620-4VV	BALL BEARING 6204VVMCPS2S	1	
46	313-049	OIL SEAL (B)	1	
47	313-048	BEARING COVER	1	
48	878-181	NYLOCK HEX. SOCKET HD. BOLT M5X16	2	
49	939-299	NEEDLE BEARING (M661)	1	
50	313-047	FIRST GEAR	1	
51	313-139	SEAL PACKING	1	

*: ALTERNATIVE PARTS

PARTS

DH 40MB

ITEM NO.	CODE NO.	DESCRIPTION	NO. USED	REMARKS	
52	313-088	GEAR COVER	1		
53	313-402	DAMPER WASHER	1		
54	313-401	DAMPER	1		
55	313-400	DAMPER HOLDER	1		
56	313-399	STOPPER RING	1		
57	313-057	NEEDLE PIN D6X6	4		
58	971-750	FEATHER KEY 3X3X20	2		
59	313-394	CYLINDER	1		
60	313-121	CLUTCH SPRING	1		
61	313-407	LOCK SLEEVE	1		
62	313-408	LOCK SPRING	1		
63	313-062	STRIKER	1		
64	986-104	O - RING	2		
65	981-956	CLUTCH	1		
66	981-885	PISTON	1		
67	980-708	PISTON PIN	1		
68	980-707	CONNECTING ROD ASS'Y	1	INCLUD.69	
69	980-756	NEEDLE BEARING (NSK AJ50 1203)	1		
70	313-403	CYLINDER CASE	1		
71	993-041	NYLOCK BOLT (W/FLANGE) M6X25	4		
72	956-996	O - RING (1AS - 60)	1		
73	993-069	NEEDLE BEARING (B) (NTN HMK4520)	1		
74	313-115	BEVEL GEAR	1		
75	313-078	SIDE HANDLE	1		
76	313-079	HANDLE HOLDER	1		
77	313-080	HANDLE BOLT	1		
78	971-786	STOPPER ROD	1		
79	873-095	O - RING (P - 16)	1		
80	313-118	LEVER SHAFT	1		
81	313-412	UNDER COVER	1		
82	313-411	SHAFT COVER	1		
83	949-423	WASHER M4 (10 PCS.)	2		
84	880-630	NYLOCK HEX. SOCKET HD. BOLT M4X12	2		
85	313-410	LEVER	1		
86	307-605	SPRING	1		
87	313-424	SLEEVE	1		
88	313-077	NYLOCK BOLT (W/FLANGE) M5X25	7		
89	620-2VV	BALL BEARING 6202VVCMP2S	1		
90	980-700	DUST WASHER (B)	1		
91	313-089	O - RING	1		
92	971-097	FAN	1		
*	93	360-426U	ARMATURE ASS'Y (A) 110V - 115V	1	INCLUD.89,90,92,97,98
*	93	360-426D	ARMATURE ASS'Y (A) 127V	1	INCLUD.92
*	93	360-426E	ARMATURE ASS'Y (A) 220V - 230V	1	INCLUD.92
*	93	360-426F	ARMATURE ASS'Y (A) 240V	1	INCLUD.92
	94	953-174	HEX. HD. TAPPING SCREW D5X55	2	
*	95	340-381C	STATOR ASS'Y 110V - 115V	1	INCLUD.96
*	95	340-381D	STATOR ASS'Y 127V	1	INCLUD.96
*	95	340-381E	STATOR ASS'Y 220V - 230V	1	INCLUD.96
*	95	340-381F	STATOR ASS'Y 240V	1	INCLUD.96

*: ALTERNATIVE PARTS

PARTS

DH 40MB

ITEM NO.	CODE NO.	DESCRIPTION	NO. USED	REMARKS
* 95	340-381G	STATOR ASS'Y 220V - 230V	1	INCLUD.96 FOR NZL,GBR,SAF,ITA,FRG,FRA, BEL,HOL,DEN,FIN,SWE,AUT,NOR,ESP,SUI
* 95	340-381K	STATOR ASS'Y 115V	1	INCLUD.96 FOR USA,CAN
* 95	340-381H	STATOR ASS'Y 240V	1	INCLUD.96 FOR AUS
96	930-703	BRUSH TERMINAL	2	
97	313-086	DUST WASHER (A)	1	
98	629-VVM	BALL BEARING 629VVMC2EPS2L	1	
99	314-260	HOUSING ASS'Y	1	INCLUD.103,104
100		HITACHI LABEL	1	
101	945-161	BRUSH CAP	2	
102	981-612Z	CARBON BRUSH (AUTO STOP TYPE) (1 PAIR)	2	
103	958-900	BRUSH HOLDER	2	
104	938-477	HEX. SOCKET SET SCREW M5X8	2	
105	313-091	BEARING HOLDER	1	
106	313-090	TAIL COVER	1	
107	302-089	TAPPING SCREW (W/FLANGE) D5X20 (BLACK)	2	
108	313-949	HANDLE	1	
109	313-093	SWITCH (C) (2P SCREW TYPE W/O LOCK)	1	
110	313-096	HANDLE COVER	1	
111	307-028	TAPPING SCREW (W/FLANGE) D4X25 (BLACK)	2	
* 112	992-810	TERMINAL	1	
* 112	980-063	TERMINAL	1	FOR SIN,KUW,GBR (110V),SAF,NGU,NZL,AUS
* 112	930-804	TERMINAL M4.0 (10 PCS.)	1	FOR USA,CAN
* 113	960-266	CORD CLIP	1	
* 113	981-987Z	CORD CLIP	1	FOR SUI
114	984-750	TAPPING SCREW (W/FLANGE) D4X16	2	
* 115	500-239Z	CORD	1	(CORD ARMOR D10.7)
* 115	500-235Z	CORD	1	(CORD ARMOR D8.2) FOR SUR,INA
* 115	500-394Z	CORD	1	(CORD ARMOR D10.7) FOR SYR
* 115	500-422Z	CORD	1	(CORD ARMOR D8.2) FOR SIN,KUW
* 115	500-454Z	CORD	1	(CORD ARMOR D10.7) FOR GBR (110V)
* 115	500-446Z	CORD	1	(CORD ARMOR D10.7) FOR GBR (230V)
* 115	500-390Z	CORD	1	(CORD ARMOR D10.7) FOR ITA,FRG,FRA,BEL, HOL,DEN,FIN,SWE,AUS,NOR,ESP,CHN,KOR
* 115	500-232Z	CORD	1	(CORD ARMOR D8.2) FOR SAF
* 115	500-227Z	CORD	1	(CORD ARMOR D8.2) FOR NGU,NZL
* 115	500-439Z	CORD	1	(CORD ARMOR D10.7) FOR AUS
* 115	311-953	CORD	1	(CORD ARMOR D10.7) FOR USA,CAN
* 115	500-391Z	CORD	1	(CORD ARMOR D10.7) FOR SUI
116	959-141	CONNECTOR 50092 (10 PCS.)	2	
117	313-948	DIAL FRAME	1	
118	305-558	TAPPING SCREW (W/FLANGE) D5X25 (BLACK)	4	
119		NAME PLATE	1	
* 120	958-049	CORD ARMOR D8.2	1	
* 120	940-778	CORD ARMOR D10.7	1	
* 121	313-947	CONTROLLER CIRCUIT 100V - 127V	1	
* 121	313-950	CONTROLLER CIRCUIT 220V - 240V	1	
* 121	313-951	CONTROLLER CIRCUIT 115V	1	FOR USA,CAN
* 122	313-092	PLUG (A)	1	
* 122	313-142	PLUG (A)	1	FOR NZL,AUS,GBR,SAF,ITA,FRG,FRA,BEL,HOL, DEN,FIN,SWE,AUT,NOR,ESP,KOR

*: ALTERNATIVE PARTS

PARTS

DH 40MB

ITEM NO.	CODE NO.	DESCRIPTION	NO. USED	REMARKS
* 122	313-144	PLUG (A)	1	FOR SUI
* 123	313-094	PLUG (B)	1	
* 123	313-143	PLUG (B)	1	FOR NZL,GBR,SAF,ITA,FRG,FRA,BEL,HOL,DEN, FIN,SWE,AUT,NOR,ESP,SUI,CHN,KOR
* 123	313-966	PLUG (B)	1	FOR USA,CAN
124	959-141	CONNECTOR 50092 (10 PCS.)	1	
* 125	938-307	PILLAR TERMINAL	1	FOR NZL,GBR,SAF,ITA,FRG,FRA,BEL,HOL,DEN, FIN,SWE,AUT,NOR,ESP,SUI,USA,CAN,CHN,KOR

STANDARD ACCESSORIES

ITEM NO.	CODE NO.	DESCRIPTION	NO. USED	REMARKS
501	313-097	CASE (PLASTIC)	1	
502	981-840	GREASE (A) FOR HAMMER.HAMMER DRILL (30G)	1	
503	944-458	HEX. BAR WRENCH 4MM	1	
504	944-459	HEX. BAR WRENCH 5MM	1	

OPTIONAL ACCESSORIES

ITEM NO.	CODE NO.	DESCRIPTION	NO. USED	REMARKS
601	313-448	DRILL BIT (SDS MAX) D18X340	1	
602	313-449	DRILL BIT (SDS MAX) D19X340	1	
603	313-450	DRILL BIT (SDS MAX) D22X320	1	
604	313-451	DRILL BIT (SDS MAX) D25X320	1	
605	313-452	DRILL BIT (SDS MAX) D28X370	1	
606	313-453	DRILL BIT (SDS MAX) D32X370	1	
607	313-454	DRILL BIT (SDS MAX) D38X370	1	
608	313-455	DRILL BIT (SDS MAX) D40X370	1	
609	313-456	DRILL BIT (SDS MAX) D18X540	1	
610	313-457	DRILL BIT (SDS MAX) D19X540	1	
611	313-458	DRILL BIT (SDS MAX) D22X520	1	
612	313-459	DRILL BIT (SDS MAX) D25X520	1	
613	313-460	DRILL BIT (SDS MAX) D28X570	1	
614	313-461	DRILL BIT (SDS MAX) D32X570	1	
615	313-462	DRILL BIT (SDS MAX) D38X570	1	
616	313-463	DRILL BIT (SDS MAX) D40X570	1	
617	944-460	TAPER SHANK DRILL BIT D11X100	1	
618	944-461	TAPER SHANK DRILL BIT D12.3X110	1	
619	993-038	TAPER SHANK DRILL BIT D12.7X110	1	
620	944-462	TAPER SHANK DRILL BIT D14.3X110	1	
621	944-500	TAPER SHANK DRILL BIT D14.5X110	1	
622	944-463	TAPER SHANK DRILL BIT D17.5X120	1	
623	313-464	TAPER SHANK ADAPTER ASS'Y (SDS MAX) NO.1	1	
624	944-477	COTTER	1	
625	313-465	ADAPTER (SDS MAX) FOR SDS PLUS SHANK BIT	1	
626	955-994	CORE BIT 25MM	1	
627	955-995	CORE BIT 29MM	1	
628	955-996	CORE BIT 32MM	1	INCLUD.642
629	955-998	CORE BIT 35MM	1	INCLUD.643
630	956-000	CORE BIT 38MM	1	INCLUD.644

* : ALTERNATIVE PARTS

OPTIONAL ACCESSORIES

DH 40MB

ITEM NO.	CODE NO.	DESCRIPTION	NO. USED	REMARKS
631	955-154	CORE BIT 45MM	1	INCLUD.645
632	959-706	CORE BIT 50MM	1	INCLUD.646
633	955-155	CORE BIT 54MM	1	INCLUD.647
634	959-707	CORE BIT 60MM	1	INCLUD.648
635	956-002	CORE BIT 64MM	1	INCLUD.649
636	959-708	CORE BIT 70MM	1	INCLUD.650
637	959-709	CORE BIT 75MM	1	INCLUD.651
638	955-157	CORE BIT 79MM	1	INCLUD.652
639	956-004	CORE BIT 94MM	1	INCLUD.653
640	959-710	CORE BIT 100MM	1	INCLUD.654
641	955-159	CORE BIT 105MM	1	INCLUD.655
642	955-997	GUIDE PLATE (FOR CORE BIT 32MM)	1	
643	955-999	GUIDE PLATE (FOR CORE BIT 35MM)	1	
644	956-001	GUIDE PLATE (FOR CORE BIT 38MM)	1	
645	955-166	GUIDE PLATE (FOR CORE BIT 45MM)	1	
646	950-475	GUIDE PLATE (FOR CORE BIT 50MM)	1	
647	955-167	GUIDE PLATE (FOR CORE BIT 54MM)	1	
648	950-476	GUIDE PLATE (FOR CORE BIT 60MM)	1	
649	956-003	GUIDE PLATE (FOR CORE BIT 64MM)	1	
650	950-477	GUIDE PLATE (FOR CORE BIT 70MM)	1	
651	950-478	GUIDE PLATE (FOR CORE BIT 75MM)	1	
652	955-168	GUIDE PLATE (FOR CORE BIT 79MM)	1	
653	956-005	GUIDE PLATE (FOR CORE BIT 94MM)	1	
654	950-479	GUIDE PLATE (FOR CORE BIT 100MM)	1	
655	955-169	GUIDE PLATE (FOR CORE BIT 105MM)	1	
656	959-691	CORE BIT SET 32MM	1	
657	959-692	CORE BIT SET 35MM	1	
658	959-693	CORE BIT SET 38MM	1	
659	959-694	CORE BIT SET 45MM	1	
660	959-695	CORE BIT SET 50MM	1	
661	959-696	CORE BIT SET 54MM	1	
662	959-697	CORE BIT SET 60MM	1	
663	959-698	CORE BIT SET 64MM	1	
664	959-699	CORE BIT SET 70MM	1	
665	959-700	CORE BIT SET 75MM	1	
666	959-701	CORE BIT SET 79MM	1	
667	959-702	CORE BIT SET 94MM	1	
668	959-703	CORE BIT SET 100MM	1	
669	959-704	CORE BIT SET 105MM	1	
670	956-009	CENTER PIN (B) 147L FOR CORE BIT D32 - 35	1	
671	955-165	CENTER PIN (A) 133L FOR CORE BIT D38 - 150	1	
672	313-466	CORE BIT SHANK (B) SDS MAX	1	
673	313-467	CORE BIT SHANK (A) SDS MAX	1	
674	950-272	DRILL CHUCK 13VLA	1	INCLUD.675
675	930-515	CHUCK WRENCH 10G	1	
676	313-468	CHUCK ADAPTER (SDS MAX)	1	
677	313-469	CHEMICAL ANCHOR ADAPTER (SDS MAX) 12.7MM	1	
678	313-470	CHEMICAL ANCHOR ADAPTER (SDS MAX)19MM	1	
679	313-471	BULL POINT (SDS MAX) 280L	1	
680	313-472	BULL POINT (SDS MAX) 400L	1	
681	313-473	COLD CHISEL (SDS MAX) 280MM	1	

★: ALTERNATIVE PARTS

