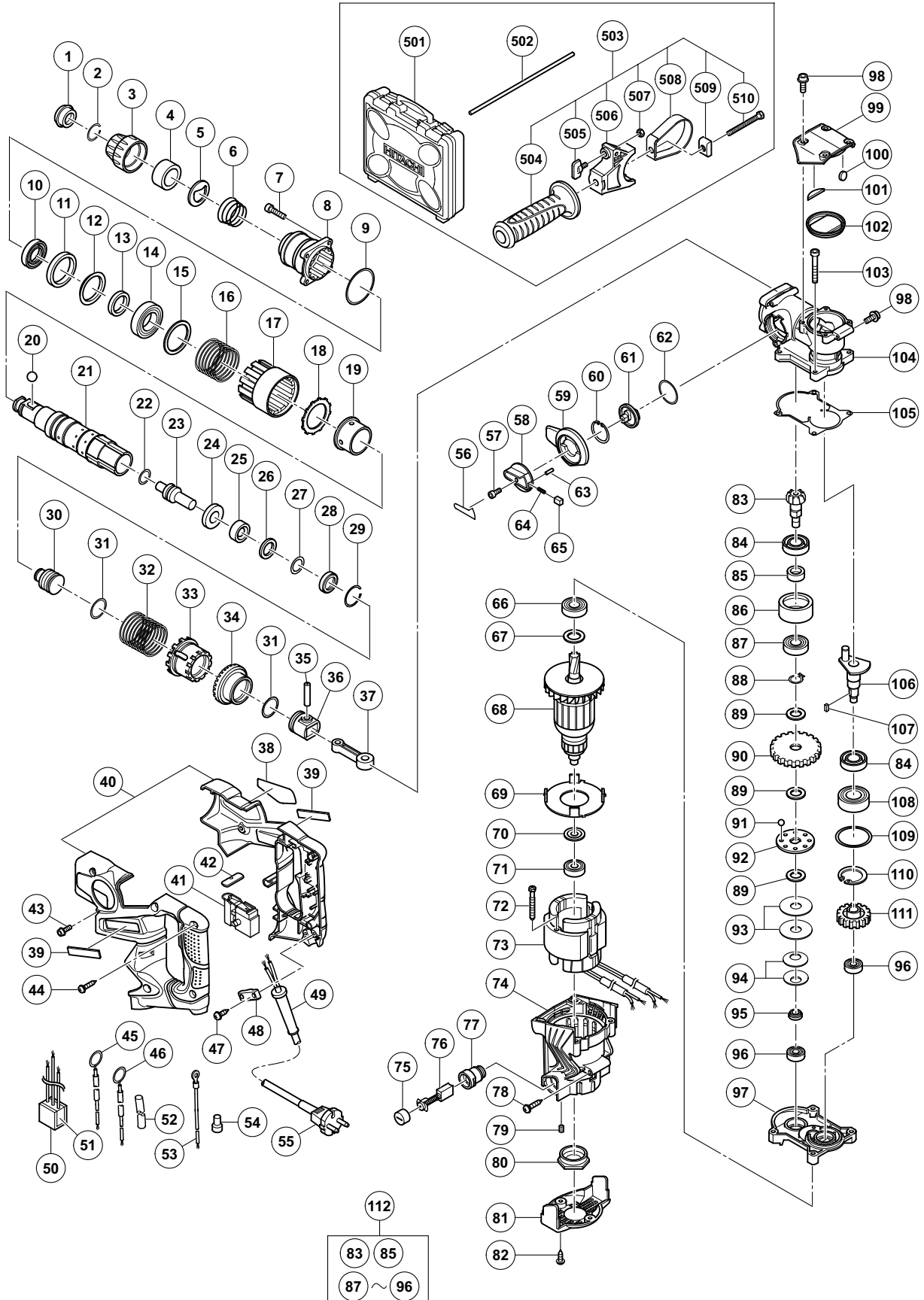


ELECTRIC TOOL PARTS LIST

ROTARY HAMMER Model DH 28PC

2009·9·7
(E1)



PARTS

DH 28PC

ITEM NO.	CODE NO.	DESCRIPTION	NO. USED	REMARKS	
1	306-345	FRONT CAP	1		
2	306-340	STOPPER RING	1		
3	324-527	GRIP	1		
4	330-192	BALL HOLDER	1		
5	324-526	HOLDER PLATE	1		
6	330-191	HOLDER SPRING	1		
7	992-803	SEAL LOCK HEX. SOCKET HD. BOLT M6 X 20	4		
8	330-174	CYLINDER CASE	1		
9	990-067	O-RING (1AS-50)	1		
10	328-867	OIL SEAL	1		
11	330-175	DAMPER (A)	1		
12	330-184	DAMPER WASHER (B)	1		
13	304-020	FELT PACKING (A)	1		
14	690-5DD	BALL BEARING 6905DDUCMNS7S	1		
15	330-176	WASHER (A)	1		
16	330-177	LOCK SPRING	1		
17	330-178	LOCK SLEEVE	1		
18	330-179	WASHER (B)	1		
19	330-187	SLIDE SLEEVE	1		
20	959-156	STEEL BALL D7.0 (10 PCS.)	1		
21	330-180	CYLINDER	1		
22	323-058	O-RING (C)	1		
23	330-181	SECOND HAMMER	1		
24	330-182	DAMPER WASHER	1		
25	330-183	DAMPER (B)	1		
26	331-672	DAMPER HOLDER (A)	1		
27	330-186	O-RING (A)	1		
28	331-673	DAMPER HOLDER (B)	1		
29	323-062	STOPPER RING	1		
30	330-185	STRIKER	1		
31	319-577	O-RING (I.D 19.2)	2		
32	330-188	CLUTCH SPRING	1		
33	330-189	CLUTCH	1		
34	330-190	BEVEL GEAR	1		
35	330-173	PISTON PIN	1		
36	330-172	PISTON	1		
37	319-585	CONNECTING ROD	1		
38		NAME PLATE	1		
39	886-342	HITACHI PLATE	2		
40	330-256	HANDLE (A). (B) SET	1		
*	41	331-677	SWITCH	1	
*	41	330-214	SWITCH (1P PILLAR TYPE)	1	FOR USA, CAN
	42	322-853	PUSHING BUTTON	1	
	43	316-228	HEX. SOCKET HD. BOLT (W/FLANGE) M4 X 10	4	
	44	307-028	TAPPING SCREW (W/FLANGE) D4 X 25 (BLACK)	3	
*	45	330-254	INTERNAL WIRE 18AWG X 300L (BLUE)	1	
*	45	330-217	INTERNAL WIRE 16AWG X 300L (BLUE)	1	FOR USA, CAN, GBR (110V)
*	46	330-255	INTERNAL WIRE 18AWG X 300L (BROWN)	1	
*	46	330-218	INTERNAL WIRE 16AWG X 300L (BROWN)	1	FOR USA, CAN, GBR (110V)
	47	984-750	TAPPING SCREW (W/FLANGE) D4 X 16	2	

PARTS

DH 28PC

ITEM NO.	CODE NO.	DESCRIPTION	NO. USED	REMARKS
48	960-266	CORD CLIP	1	
49	953-327	CORD ARMOR D8.8	1	
* 50	317-492	SUPPORT (B)	1	FOR EUROPE
* 51	325-566	NOISE SUPPRESSOR	1	FOR EUROPE
52	321-322	VINYL TUBE	1	
* 53	981-500	INTERNAL WIRE	1	FOR EUROPE
* 54	959-140	CONNECTOR 50091 (10 PCS.)	1	FOR EUROPE
* 55	500-390Z	CORD	1	(CORD ARMOR D8.8)
* 55	500-465Z	CORD	1	(CORD ARMOR D8.8) FOR GBR (110V)
* 55	500-446Z	CORD	1	(CORD ARMOR D8.8) FOR GBR (230V)
* 55	500-249Z	CORD	1	(CORD ARMOR D8.8) FOR USA, CAN
* 55	500-424Z	CORD	1	(CORD ARMOR D8.8) FOR KUW, SIN
* 55	500-457Z	CORD	1	(CORD ARMOR D8.8) FOR CHN
* 55	500-235Z	CORD	1	(CORD ARMOR D8.8) FOR IND
56	321-867	LEVER LABEL	1	
57	983-162	SEAL LOCK HEX. SOCKET HD. BOLT M4 X 12	1	
58	321-309	CHANGE LEVER	1	
59	330-207	LEVER HOLDER	1	
60	939-556	RETAINING RING FOR D35 HOLE (10 PCS.)	1	
61	330-206	LEVER SHAFT	1	
62	330-205	O-RING	1	
63	321-312	PIN D2 X 10	1	
64	321-310	LEVER SPRING	1	
65	321-311	PUSHING BUTTON	1	
66	600-1DD	BALL BEARING 6001DDCMPS2L	1	
67	971-736	WASHER (B)	1	
* 68	360-857C	ARMATURE 110V-115V	1	
* 68	360-857U	ARMATURE ASS'Y 120V	1	INCLUD. 66, 67, 70, 71
* 68	360-857E	ARMATURE 220V-230V	1	
* 68	360-857F	ARMATURE 240V	1	
69	330-202	FAN GUIDE	1	
70	982-631	WASHER (A)	1	
71	608-VVM	BALL BEARING 608VVC2PS2L	1	
72	980-864	HEX. HD. TAPPING SCREW D5 X 40	2	
* 73	340-739C	STATOR 110V-115V	1	
* 73	340-739G	STATOR 120V	1	
* 73	340-739E	STATOR 220V-230V	1	
* 73	340-739H	STATOR 220V-230V	1	FOR SIN
* 73	340-739J	STATOR 240V	1	
74	330-201	HOUSING ASS'Y	1	INCLUD. 77, 79
75	935-829	BRUSH CAP	2	
76	999-043	CARBON BRUSH (1 PAIR)	2	
77	957-051	BRUSH HOLDER	2	
78	302-089	TAPPING SCREW (W/FLANGE) D5 X 20 (BLACK)	2	
79	938-477	HEX. SOCKET SET SCREW M5 X 8	2	
80	310-111	BEARING BUSHING (B)	1	
81	330-203	TAIL COVER	1	
82	307-811	TAPPING SCREW (W/FLANGE) D4 X 16 (BLACK)	2	
83	330-196	BEVEL PINION	1	
84	981-851	OIL SEAL (B)	2	

PARTS

DH 28PC

ITEM NO.	CODE NO.	DESCRIPTION	NO. USED	REMARKS
85	330-197	COLLAR	1	
86	330-194	SLEEVE	1	
87	600-1DD	BALL BEARING 6001DDCMPS2L	1	
88	939-542	RETAINING RING FOR D12 SHAFT (10 PCS.)	1	
89	992-503	WASHER	3	
90	330-198	SECOND GEAR	1	
91	959-155	STEEL BALL D3.97 (10 PCS.)	8	
92	992-916	CLUTCH PLATE	1	
93	992-926	SPRING PLATE	2	
94	980-877	BELLEVILLE SPRING	2	
95	330-199	BUSHING	1	
96	608-VVM	BALL BEARING 608VVC2PS2L	2	
97	330-200	GEAR COVER	1	
98	994-192	HEX. SOCKET HD. BOLT (W/FLANGE) M5 X 16	6	
99	330-204	CRANK COVER	1	
100	324-544	FELT PACKING (B)	1	
101	331-674	FELT PACKING	1	
102	331-675	RUBBER SEAL	1	
103	324-060	SEAL LOCK HEX. SOCKET HD. BOLT M5 X 40	4	
104	330-169	CRANK CASE	1	
105	331-676	SEAL PACKING	1	
106	330-170	CRANK SHAFT	1	
107	944-109	FEATHER KEY 3 X 3 X 8	1	
108	600-2DD	BALL BEARING 6002DDCMPS2L	1	
109	872-767	O-RING (S-32)	1	
110	948-001	RETAINING RING FOR D32 HOLE	1	
111	330-171	FIRST GEAR	1	
112	330-195	SLIP CLUTCH ASS'Y	1	INCLUD. 83, 85, 87-96

OPTIONAL ACCESSORIES

DH 28PC

ITEM NO.	CODE NO.	DESCRIPTION	NO. USED	REMARKS
601	303-046	BULL POINT (SDS+) 250MM (ROUND SHANK TYPE)	1	
602	303-044	CHEMICAL ANCHOR ADAPTER (SDS+) 12.7MM X 90L	1	
603	303-045	CHEMICAL ANCHOR ADAPTER (SDS+) 19.0MM X 100L	1	
604	303-334	CHUCK HANDLE	1	
605	302-976	ANCHOR SETTING ADAPTER A (SDS+) W1/4 X 260L	1	
606	930-515	CHUCK WRENCH 10G	1	
607	302-975	ANCHOR SETTING ADAPTER A (SDS+) W5/16 X 260L	1	
608	303-621	ANCHOR SETTING ADAPTER A (SDS+) W3/8 X 160L	1	
609	302-974	ANCHOR SETTING ADAPTER A (SDS+) W3/8 X 260L	1	
610	302-979	ANCHOR SETTING ADAPTER B (SDS+) W1/4 X 260L	1	
611	302-978	ANCHOR SETTING ADAPTER B(SDS+) W5/16 X 260L	1	
612	303-622	ANCHOR SETTING ADAPTER B (SDS+) W3/8 X 160L	1	
613	302-977	ANCHOR SETTING ADAPTER B (SDS+) W3/8 X 260L	1	
614	303-617	TAPER SHANK ADAPTER (SDS PLUS) NO.1	1	
615	303-618	TAPER SHANK ADAPTER (SDS PLUS) NO.2	1	
616	303-619	A-TAPER SHANK ADAPTER (SDS PLUS)	1	
617	303-620	B-TAPER SHANK ADAPTER (SDS PLUS)	1	
618	981-122	SPECIAL SCREW M6 X 22	1	
619	303-627	CORE BIT SHANK (SDS PLUS) 45-90MM 300L	1	
620	303-625	CORE BIT SHANK (SDS PLUS) 25-38MM 105L	1	
621	303-626	CORE BIT SHANK (SDS PLUS) 25-38MM 300L	1	
622	303-624	CHUCK ADAPTER (D) (SDS PLUS)	1	
623	321-825	DRILL CHUCK AND ADAPTER SET	1	INCLUD. 624, 625
624	303-623	CHUCK ADAPTER (G) (SDS PLUS)	1	
625	321-814	DRILL CHUCK 13VLRB-D	1	INCLUD. 626
626	995-344	FLAT HD. SCREW (A) (LEFT HAND) M6 X 25	1	
627	321-813	DRILL CHUCK 13VLD-D	1	
628	980-927	GREASE FOR HAMMER. HAMMER DRILL (500G)	1	
629	981-840	GREASE (A) FOR HAMMER. HAMMER DRILL (30G)	1	
630	308-471	GREASE FOR HAMMER. HAMMER DRILL (70G)	1	
631	971-511Z	+ DRIVER BIT (A) NO.2 25L	1	
632	971-512Z	+ DRIVER BIT (A) NO.3 25L	1	
633	944-477	COTTER	1	
634	982-684	CENTER PIN (A) 109L FOR CORE BIT D32-38	1	
635	982-685	CENTER PIN (B) 104L FOR CORE BIT D45-90	1	
636	315-921	ADAPTER (A) FOR HAMMER DRILL	1	
637	982-672	CORE BIT (A) 25MM	1	
638	982-673	CORE BIT (A) 29MM	1	
639	982-674	CORE BIT (A) 32MM	1	INCLUD. 640
640	982-686	GUIDE PLATE (FOR CORE BIT 32MM)	1	
641	982-675	CORE BIT (A) 35MM	1	INCLUD. 642
642	982-687	GUIDE PLATE (FOR CORE BIT 35MM)	1	
643	982-676	CORE BIT (A) 38MM	1	INCLUD. 644
644	982-688	GUIDE PLATE (FOR CORE BIT 38MM)	1	
645	982-677	CORE BIT (B) 45MM	1	INCLUD. 646
646	982-689	GUIDE PLATE (FOR CORE BIT 45MM)	1	
647	982-678	CORE BIT (B) 50MM	1	INCLUD. 648
648	982-690	GUIDE PLATE (FOR CORE BIT 50MM)	1	
649	982-679	CORE BIT (B) 65MM	1	INCLUD. 650
650	982-691	GUIDE PLATE (FOR CORE BIT 65MM)	1	

OPTIONAL ACCESSORIES

DH 28PC

ITEM NO.	CODE NO.	DESCRIPTION	NO. USED	REMARKS
651	982-680	CORE BIT (B) 80MM	1	INCLUD. 652
652	982-692	GUIDE PLATE (FOR CORE BIT 80MM)	1	
653	971-794	ANCHOR SETTING ADAPTER A W1/4" (MANUAL)	1	
654	971-795	ANCHOR SETTING ADAPTER A W5/16" (MANUAL)	1	
655	971-796	ANCHOR SETTING ADAPTER A W3/8" (MANUAL)	1	
656	971-797	ANCHOR SETTING ADAPTER A W1/2" (MANUAL)	1	
657	971-798	ANCHOR SETTING ADAPTER A W5/8" (MANUAL)	1	
658	971-799	ANCHOR SETTING ADAPTER B W1/4" (MANUAL)	1	
659	971-800	ANCHOR SETTING ADAPTER B W5/16" (MANUAL)	1	
660	971-801	ANCHOR SETTING ADAPTER B W3/8" (MANUAL)	1	
661	971-802	ANCHOR SETTING ADAPTER B W1/2" (MANUAL)	1	
662	971-803	ANCHOR SETTING ADAPTER B W5/8" (MANUAL)	1	
663	944-460	TAPER SHANK DRILL BIT D11 X 100	1	
664	944-461	TAPER SHANK DRILL BIT D12.3 X 110	1	
665	993-038	TAPER SHANK DRILL BIT D12.7 X 110	1	
666	944-462	TAPER SHANK DRILL BIT D14.3 X 110	1	
667	944-500	TAPER SHANK DRILL BIT D14.5 X 110	1	
668	944-463	TAPER SHANK DRILL BIT D17.5 X 120	1	
669	944-464	TAPER SHANK DRILL BIT D21.5 X 140	1	
670	320-859	SYRINGE (BLOW-OUT BULB TYPE)	1	
671	303-571	DRILL BIT (SDS PLUS) D4.0 X 110	1	
672	303-575	DRILL BIT (SDS PLUS) D5.0 X 110	1	
673	303-578	DRILL BIT (SDS PLUS) D5.0 X 160	1	
674	303-576	DRILL BIT (SDS PLUS) D5.5 X 110	1	
675	303-581	DRILL BIT (SDS PLUS) D6.5 X 160	1	
676	303-582	DRILL BIT (SDS PLUS) D7.0 X 160	1	
677	303-584	DRILL BIT (SDS PLUS) D8.0 X 160	1	
678	303-585	DRILL BIT (SDS PLUS) D8.5 X 160	1	
679	303-586	DRILL BIT (SDS PLUS) D9.0 X 160	1	
680	303-591	DRILL BIT (SDS PLUS) D12.0 X 160	1	
681	303-606	DRILL BIT (SDS PLUS) D12.0 X 260	1	
682	303-593	DRILL BIT (SDS PLUS) D12.7 X 160	1	
683	303-595	DRILL BIT (SDS PLUS) D14.0 X 160	1	
684	303-598	DRILL BIT (SDS PLUS) D15.0 X 160	1	
685	303-599	DRILL BIT (SDS PLUS) D16.0 X 160	1	
686	303-611	DRILL BIT (SDS PLUS) D16.0 X 260	1	
687	303-601	DRILL BIT (SDS PLUS) D17.0 X 160	1	
688	303-613	DRILL BIT (SDS PLUS) D19.0 X 260	1	
689	303-614	DRILL BIT (SDS PLUS) D20.0 X 250	1	
690	303-615	DRILL BIT (SDS PLUS) D22.0 X 250	1	
691	303-616	DRILL BIT (SDS PLUS) D25.0 X 450	1	
692	971-787	DUST CUP	1	
693	318-085	SYRINGE (BELLOWS TYPE)	1	
694	306-885	DUST COLLECTOR (B) ASS'Y	1	INCLUD. 695, 703
695	986-802	DUST COLLECTOR ASS'Y	1	INCLUD. 696-702
696	986-803	DUST COVER	1	
697	986-804	SEAL COVER	1	
698	948-310	RETAINING RING FOR D30 SHAFT	1	
699	958-063	WASHER	1	
700	959-150	STEEL BALL D6.35 (10 PCS.)	19	

OPTIONAL ACCESSORIES

DH 28PC

ITEM NO.	CODE NO.	DESCRIPTION	NO. USED	REMARKS	
701	986-805	OUTER RACE	1		
702	986-806	SOCKET	1		
703	306-910	SOCKET ADAPTER (B)	1		