

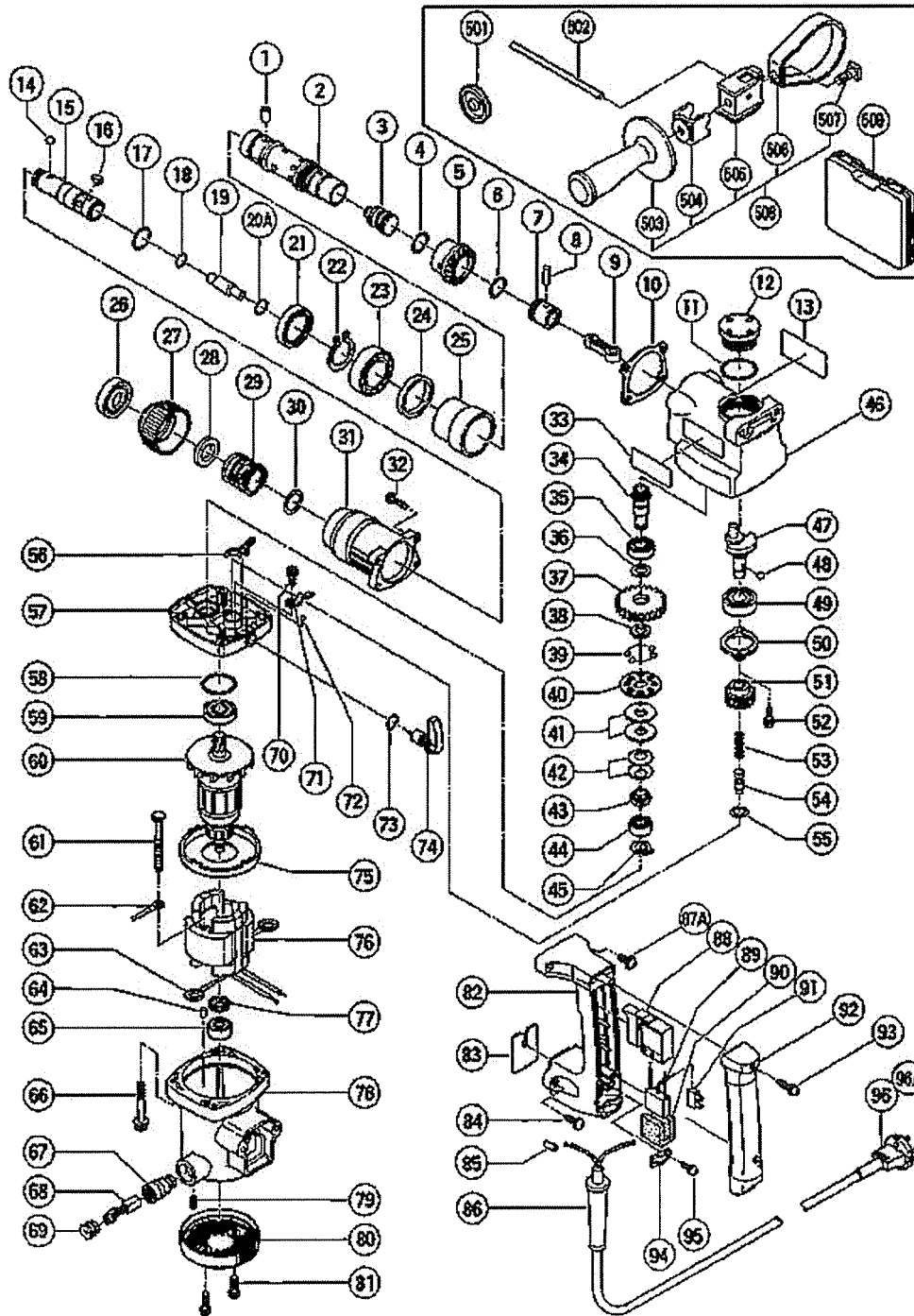
Hitachi Power Tools

LIST NO. E454

ELECTRIC TOOL PARTS LIST

■ HAMMER DRILL
Model DH 25PB

2003・6・1
(E1-3)



DH25PB P3

ItemNo	CodeNo	Description	NoUsed	Remarks
1	318-200	NEEDLE PIN	3	
2	318-022	CYLINDER	1	
3	318-024	STRIKER	1	
4	971-760	O-RING	1	
5	992-933	THIRD GEAR	1	
6	971-760	O-RING	1	
7	992-930	PISTON	1	
8	992-931	PISTON PIN	1	
9	318-020	CONNECTING ROD	1	
10	980-896	SEAL PACKING (B)	1	
11	980-948	O-RING	1	
12	980-880	OIL CAP	1	
13		NAME PLATE	1	
14	959-156	STEEL BALL D7.0 (10 PCS.)	1	
15	318-023	RETAINER SLEEVE	1	
16	318-026	NEEDLE	3	
17	980-890	O-RING (D)	1	
18	318-199	O-RING	1	
19	318-025	SECOND HAMMER	1	
20A	301-680	O-RING (I.D. 10.5)	1	
21	318-027	OIL SEAL	1	
22	948-310	RETAINING RING FOR D30 SHAFT	1	
23	690-6BB	BALL BEARING 6906CM	1	
24	992-906	URETHANE RING	1	
25	980-891	PIPE	1	
26	318-028	FRONT CAP	1	
27	318-029	GRIP	1	
28	318-030	BALL HOLDER	1	
29	306-342	HOLDER SPRING	1	
30	984-118	WASHER (B)	1	
31	318-021	CYLINDER CASE	1	
32	992-253	HEX. SOCKET HD. BOLT (W/FLANGE) M5X25	4	
33		HITACHI LABEL	1	
34	992-914	THIRD PINION	1	
35	600-1DD	BALL BEARING 6001DDCMPS2L	1	
36	992-503	WASHER	1	

37	992-928	SECOND GEAR	1	
38	971-087	STOPPER WASHER	1	
39	959-155	STEEL BALL D3.97 (10 PCS.)	8	
40	992-916	CLUTCH PLATE	1	
41	992-926	SPRING PLATE	2	
42	980-877	BELLEVILLE SPRING	2	
43	992-504	BUSHING	1	
44	608-VVM	BALL BEARING 608VVC2PS2L	1	
45	940-079	RETAINING RING FOR D8 SHAFT	1	
46	980-920	CRANK CASE	1	
47	318-034	CRANK SHAFT	1	
48	959-149	STEEL BALL D4.76 (10 PCS.)	2	
49	620-2DD	BALL BEARING 6202DDCMPS2L	1	
50	980-871	BEARING COVER	1	
51	992-902	FIRST GEAR	1	
52	987-203	SEAL LOCK SCREW (W/SP. WASHER) M4X12	2	
53	992-937	CLUTCH SPRING	1	
54	992-938	CLUTCH SHAFT	1	
55	992-506	THRUST WASHER	1	
56	986-276	STOPPER SPRING	1	
57	992-925	GEAR COVER	1	
58	872-470	O-RING (S-26)	1	
59	600-0DD	BALL BEARING 6000DDCMPS2L	1	
60	360-505C	ARMATURE 110V	1	FOR GBR(110V)
61	992-509	HEX. HD. TAPPING SCREW D5X45	2	
62	318-035	INTERNAL WIRE	1	EXCEPT THA
63	930-630	BRUSH TERMINAL	2	
64	946-362	BEARING LOCK	1	
65	626-VVM	BALL BEARING 626VVC2PS2L	1	
66	980-951	HEX. SOCKET HD. BOLT (W/FLANGE) M5X45	4	
67	990-721	BRUSH HOLDER	2	
68	999-021	CARBON BRUSH (1 PAIR)	1	
68	999-070	CARBON BRUSH (AUTO STOP TYPE) (1 PAIR)	1	
69	937-847	BRUSH CAP	2	
70	991-207	SEAL LOCK SCREW (W/SP. WASHER) M4X8	1	
71	992-936	BALL SPRING	1	

72	959-148	STEEL BALL D3.175 (10 PCS.)	1	
73	992-912	O-RING (S-8)	1	
74	302-140	CHANGE LEVER ASS'Y	1	INCLUD.73
75	992-911	FAN GUIDE	1	
77	992-500	WASHER (A)	1	
78	986-812	HOUSING ASS'Y	1	"INCLUD.67,79"
79	938-477	HEX. SOCKET SET SCREW M5X8	2	
80	318-031	TAIL COVER	1	
81	309-470	TAPPING SCREW (W/FLANGE) D4X12 (BLACK)	2	
82	318-018	HANDLE	1	
83	980-900	PLATE	1	
84	305-558	TAPPING SCREW (W/FLANGE) D5X25 (BLACK)	2	
85	981-373	TUBE (D)	2	FOR CORD
86	953-327	CORD ARMOR D8.8	1	
87A	880-881	MACHINE SCREW (W/WASHERS) M5X30 (BLACK)	2	
88	318-032	SWITCH (A)	1	FOR GBR(110V)
92	318-019	HANDLE COVER	1	
93	301-653	TAPPING SCREW (W/FLANGE) D4X20 (BLACK)	2	
94	937-631	CORD CLIP	1	
95	984-750	TAPPING SCREW (W/FLANGE) D4X16	2	
501	971-787	DUST CUP	1	
502	980-906	STOPPER ROD	1	
503	980-901	SIDE HANDLE	1	
504	980-905	ROD HOLDER	1	
505	980-902	SIDE HANDLE HOLDER	1	
506	980-904	BAND	1	
507	980-903	SQUARE BOLT M8	1	
508	980-939	SIDE HANDLE ASS'Y	1	INCLUD.503-507
509	318-307	CASE	1	
601	303-571	DRILL BIT (SDS PLUS) D4.0X110	1	
602	303-572	DRILL BIT (SDS PLUS) D4.3X110	1	
603	303-573	DRILL BIT (SDS PLUS) D4.5X110	1	
604	303-574	DRILL BIT (SDS PLUS) D4.8X110	1	
605	303-575	DRILL BIT (SDS PLUS) D5.0X110	1	
606	303-578	DRILL BIT (SDS PLUS) D5.0X160	1	
607	303-576	DRILL BIT (SDS PLUS) D5.5X110	1	

608	303-577	DRILL BIT (SDS PLUS) D6.0X110	1	
609	303-579	DRILL BIT (SDS PLUS) D6.0X160	1	
610	303-580	DRILL BIT (SDS PLUS) D6.4X160	1	
611	303-581	DRILL BIT (SDS PLUS) D6.5X160	1	
612	303-582	DRILL BIT (SDS PLUS) D7.0X160	1	
613	303-583	DRILL BIT (SDS PLUS) D7.5X160	1	
614	303-584	DRILL BIT (SDS PLUS) D8.0X160	1	
615	303-585	DRILL BIT (SDS PLUS) D8.5X160	1	
616	303-586	DRILL BIT (SDS PLUS) D9.0X160	1	
617	303-587	DRILL BIT (SDS PLUS) D9.5X160	1	
618	303-588	DRILL BIT (SDS PLUS) D10.0X160	1	
619	303-604	DRILL BIT (SDS PLUS) D10.0X260	1	
620	303-589	DRILL BIT (SDS PLUS) D10.5X160	1	
621	303-605	DRILL BIT (SDS PLUS) D10.5X260	1	
622	303-590	DRILL BIT (SDS PLUS) D11.0X160	1	
623	303-591	DRILL BIT (SDS PLUS) D12.0X166	1	
624	303-606	DRILL BIT (SDS PLUS) D12.0X260	1	
625	303-592	DRILL BIT (SDS PLUS) D12.5X166	1	
626	303-607	DRILL BIT (SDS PLUS) D12.5X260	1	
627	303-593	DRILL BIT (SDS PLUS) D12.7X166	1	
628	303-608	DRILL BIT (SDS PLUS) D12.7X260	1	
629	303-594	DRILL BIT (SDS PLUS) D13.0X166	1	
630	303-595	DRILL BIT (SDS PLUS) D14.0X166	1	
631	303-596	DRILL BIT (SDS PLUS) D14.3X166	1	
632	303-609	DRILL BIT (SDS PLUS) D14.3X260	1	
633	303-597	DRILL BIT (SDS PLUS) D14.5X166	1	
634	303-610	DRILL BIT (SDS PLUS) D14.5X260	1	
635	303-598	DRILL BIT (SDS PLUS) D15.0X166	1	
636	303-599	DRILL BIT (SDS PLUS) D16.0X166	1	
637	303-611	DRILL BIT (SDS PLUS) D16.0X260	1	
638	303-600	DRILL BIT (SDS PLUS) D16.5X166	1	
639	303-601	DRILL BIT (SDS PLUS) D17.0X166	1	
640	308-485	DRILL BIT (SDS PLUS) D17.0X260	1	
641	303-602	DRILL BIT (SDS PLUS) D17.5X166	1	
642	303-612	DRILL BIT (SDS PLUS) D17.5X260	1	
643	303-603	DRILL BIT (SDS PLUS) D18.0X166	1	
644	303-613	DRILL BIT (SDS PLUS) D19.0X260	1	

645	303-614	DRILL BIT (SDS PLUS) D20.0X250	1	
646	303-615	DRILL BIT (SDS PLUS) D22.0X250	1	
647	308-486	DRILL BIT (SDS PLUS) D24.0X250	1	
648	303-616	DRILL BIT (SDS PLUS) D25.0X450	1	
649	303-619	A-TAPER SHANK ADAPTER (SDS PLUS)	1	
650	303-620	B-TAPER SHANK ADAPTER (SDS PLUS)	1	
651	303-624	CHUCK ADAPTER (D) (SDS PLUS)	1	
652	944-460	TAPER SHANK DRILL BIT D11X100	1	
653	944-461	TAPER SHANK DRILL BIT D12.3X110	1	
654	993-038	TAPER SHANK DRILL BIT D12.7X110	1	
655	944-462	TAPER SHANK DRILL BIT D14.3X110	1	
656	944-500	TAPER SHANK DRILL BIT D14.5X110	1	
657	944-463	TAPER SHANK DRILL BIT D17.5X120	1	
658	944-464	TAPER SHANK DRILL BIT D21.5X140	1	
659	303-617	TAPER SHANK ADAPTER (SDS PLUS) NO.1	1	
660	303-618	TAPER SHANK ADAPTER (SDS PLUS) NO.2	1	
661	944-477	COTTER	1	
662	303-332	HAMMER DRILL CHUCK SET 13MM	1	"INCLUD.663,664"
663	303-334	CHUCK HANDLE	1	
664	303-335	RUBBER CAP	1	
665	302-976	ANCHOR SETTING ADAPTER A (SDS+) W1/4X260L	1	
666	302-975	ANCHOR SETTING ADAPTER A(SDS+) W5/16X260L	1	
667	303-621	ANCHOR SETTING ADAPTER A (SDS+) W3/8X160L	1	
668	302-974	ANCHOR SETTING ADAPTER A (SDS+) W3/8X260L	1	
669	302-979	ANCHOR SETTING ADAPTER B (SDS+) W1/4X260L	1	
670	302-978	ANCHOR SETTING ADAPTER B(SDS+) W5/16X260L	1	
671	303-622	ANCHOR SETTING ADAPTER B (SDS+) W3/8X160L	1	
672	302-977	ANCHOR SETTING ADAPTER B (SDS+) W3/8X260L	1	
673	971-794	"ANCHOR SETTING ADAPTER A W1/4"" (MANUAL	1	
674	971-795	"ANCHOR SETTING ADAPTER A W5/16"" (MANUA	1	

675	971-796	"ANCHOR SETTING ADAPTER A W3/8"" (MANUAL	1	
676	971-797	"ANCHOR SETTING ADAPTER A W1/2"" (MANUAL	1	
677	971-798	"ANCHOR SETTING ADAPTER A W5/8"" (MANUAL	1	
678	971-799	"ANCHOR SETTING ADAPTER B W1/4"" (MANUAL	1	
679	971-800	"ANCHOR SETTING ADAPTER B W5/16"" (MANUA	1	
680	971-801	"ANCHOR SETTING ADAPTER B W3/8"" (MANUAL	1	
681	971-802	"ANCHOR SETTING ADAPTER B W1/2"" (MANUAL	1	
682	971-803	"ANCHOR SETTING ADAPTER B W5/8"" (MANUAL	1	
683	303-044	CHEMICAL ANCHOR ADAPTER (SDS+) 12.7MMX90L	1	
684	303-045	CHEMICAL ANCHOR ADAPTER(SDS+) 19.0MMX100L	1	
685	321-813	DRILL CHUCK 13VLD-D	1	INCLUD.686
686	930-515	CHUCK WRENCH 10G	1	
687	303-623	CHUCK ADAPTER (G) (SDS PLUS)	1	
688	982-672	CORE BIT (A) 25MM	1	
689	982-673	CORE BIT (A) 29MM	1	
690	982-674	CORE BIT (A) 32MM	1	INCLUD.698
691	982-675	CORE BIT (A) 35MM	1	INCLUD.699
692	982-676	CORE BIT (A) 38MM	1	INCLUD.700
693	982-677	CORE BIT (B) 45MM	1	INCLUD.701
694	982-678	CORE BIT (B) 50MM	1	INCLUD.702
695	982-679	CORE BIT (B) 65MM	1	IMCLUD.703
696	982-680	CORE BIT (B) 80MM	1	INCLUD.704
697	982-681	CORE BIT (B) 90MM	1	INCLUD.705
698	982-686	GUIDE PLATE (FOR CORE BIT 32MM)	1	
699	982-687	GUIDE PLATE (FOR CORE BIT 35MM)	1	
700	982-688	GUIDE PLATE (FOR CORE BIT 38MM)	1	
701	982-689	GUIDE PLATE (FOR CORE BIT 45MM)	1	
702	982-690	GUIDE PLATE (FOR CORE BIT 50MM)	1	
703	982-691	GUIDE PLATE (FOR CORE BIT 65MM)	1	
704	982-692	GUIDE PLATE (FOR CORE BIT 80MM)	1	

705	982-693	GUIDE PLATE (FOR CORE BIT 90MM)	1	
706	982-684	CENTER PIN (A) 109L FOR CORE BIT D32-38	1	
707	982-685	CENTER PIN (B) 104L FOR CORE BIT D45-90	1	
708	303-625	CORE BIT SHANK (SDS PLUS) 25-38MM 105L	1	
709	303-626	CORE BIT SHANK (SDS PLUS) 25-38MM 300L	1	
710	303-627	CORE BIT SHANK (SDS PLUS) 45-90MM 300L	1	
711	303-046	BULL POINT (SDS+) 250MM(ROUND SHANK TYPE	1	
712	306-885	DUST COLLECTOR (B) ASS'Y	1	INCLUD.713
713	306-910	SOCKET ADAPTER (B)	1	
714	981-840	GREASE (A) FOR HAMMER.HAMMER DRILL (30G)	1	
715	308-471	GREASE FOR HAMMER.HAMMER DRILL (70G)	1	
716	980-927	GREASE FOR HAMMER.HAMMER DRILL (500G)	1	