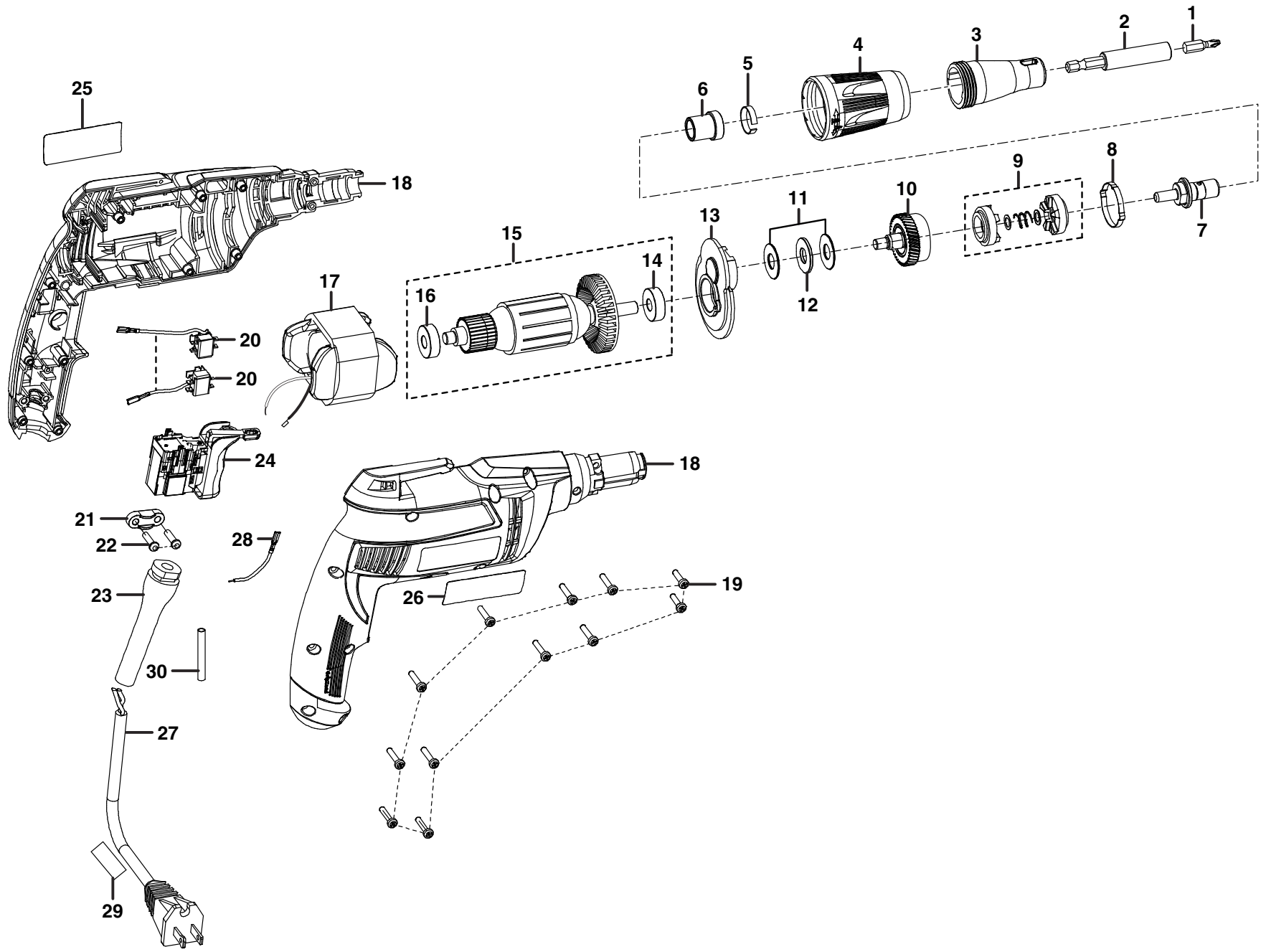


RYOBI SCREWDRIVER - MODEL NUMBER DG100



RYOBI SCREWDRIVER – MODEL NUMBER DG100

The model number will be found on a plate attached to the motor housing. Always mention the model number in all correspondence regarding your **SCREWDRIVER** or when ordering repair parts.

PARTS LIST

KEY NO.	PART NUMBER	DESCRIPTION	QTY	KEY NO.	PART NUMBER	DESCRIPTION	QTY
1	678051002	Bit.....	1	17	741251001	Field Assembly.....	1
2	671220001	Magnet Bit Holder.....	1	18	302902001	Housing Assembly.....	1
3	302880001	Adjusting Sleeve Assembly.....	1	19	6620614	Screw (M3.5 x 14 mm).....	12
4	302882001	Lock Sleeve.....	1	20	200896001	Brush Assembly.....	1
5	632784001	Front Spring Plate.....	1	21	5950101	Cord Clamp.....	1
6	303154001	Bushing Assembly.....	1	22	6627201	Screw (M4 x 14 mm).....	2
7	302879001	Slide Shaft Assembly.....	1	23	590274007	Bend Relief.....	1
8	671218003	Spring Plate.....	1	24	760339001	Switch.....	1
9	302903001	Clutch Assembly.....	1	25	940114156	Logo Label.....	1
10	302878001	Output Shaft Assembly.....	1	26	940976333	Data Label.....	1
11	690065002	Axial Bearing Washer.....	2	27	730377013	Power Cord.....	1
12	690066002	Axial Bearing.....	1	28	290102005	Lead with Terminal.....	1
13	302877001	Inner Casing Assembly.....	1	29	940114214	Cord Tag Label.....	1
14	671498001	Ball Bearing (6082RS).....	1	30	700026004	Sleeve (5 mm, Dia.).....	1
15	200893001	Armature Assembly (Includes Key No. 14 and 16).....	1		987000438	Operator's Manual (961067051)	
16	680141018	Ball Bearing (608Z).....	1		10-09-08 (Rev:00)		

WARNING: Improper repair of a double insulated tool can result in damage to the double insulation system possibly causing electrical shock or electrocution. Any repairs requiring disassembly of your tool requires safety testing and should only be performed by a Ryobi Authorized Service Center. For the service center nearest you call 1-800-860-4050.