

## Cordless Drill Driver - 3 601 H65 310 - DDH181

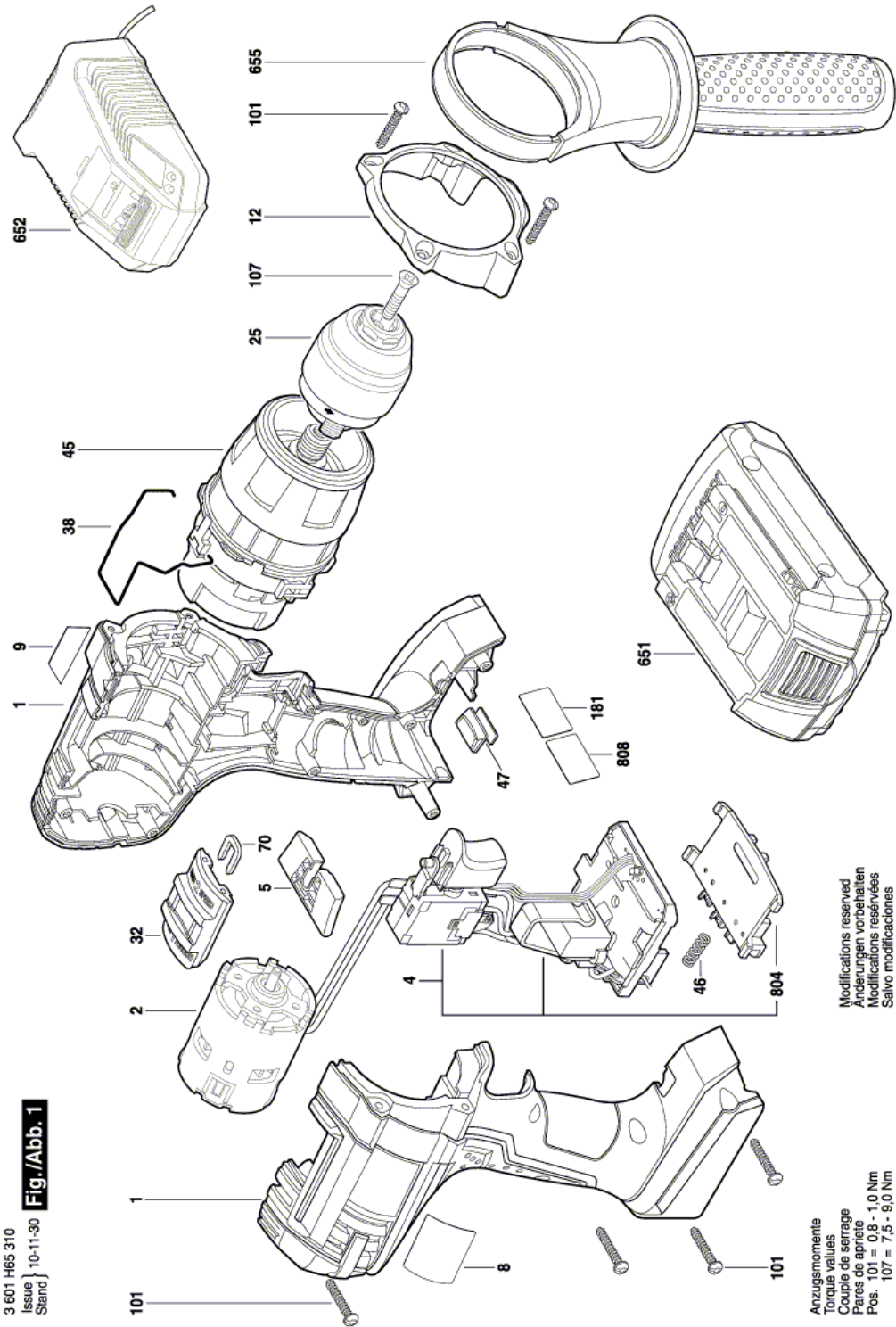
www.powertools-aftersaleservice.com



**BOSCH**

Item	Part Number	Description	Illustration	Price	Quantity	Price Group
1	2 609 100 874	Housing Section	1	-,-	1	33
2	1 607 022 609	DC motor 18V	1	-,-	1	41
4	1 607 233 442	Electronics Module	1	-,-	1	44
5	2 609 100 877	Adjusting lever	1	-,-	1	10
8	2 609 133 085	Warning Plate	1	-,-	1	13
9	2 609 132 940	Nameplate Lithium-ION 18V	1	-,-	1	13
12	2 609 111 024	Front Cap	1	-,-	1	19
25	2 609 111 104	Keyless Chuck	1	-,-	1	40
32	2 609 100 878	Adjusting lever	1	-,-	1	11
38	2 609 111 021	Switch Spring	1	-,-	1	10
45	2 609 199 317	Gear Box	1	-,-	1	47
46	1 609 280 477	Compression Spring	1	-,-	1	11
47	2 609 100 879	Lens	1	-,-	1	12
70	2 609 110 537	Clip	1	-,-	1	11
101	2 609 110 353	Torx Oval-Head Screw	1	-,-	11	10
107	2 603 421 229	Countersunk-Head Screw M6x23	1	-,-	1	11
181	2 609 133 086	Reference Plate	1	-,-	1	13
651	2 607 336 237	Slide-In Accu Package BBS MR L-PACK 18V, 3,0Ah, LI	1	-,-	1	54
652	2 607 225 327	Charger USA 120/10,8-18V, 30 MIN	1	-,-	1	49
655	2 602 025 158	Auxiliary Handle	1	-,-	1	27
804	1 609 280 478	Contact retainer	1	-,-	1	26
808	2 609 132 939	Nameplate	1	-,-	1	13

Illustration - Type E



Information subject to change without further notice.