

## Cordless Drill Driver - 3 601 JA4 310 - DDB180

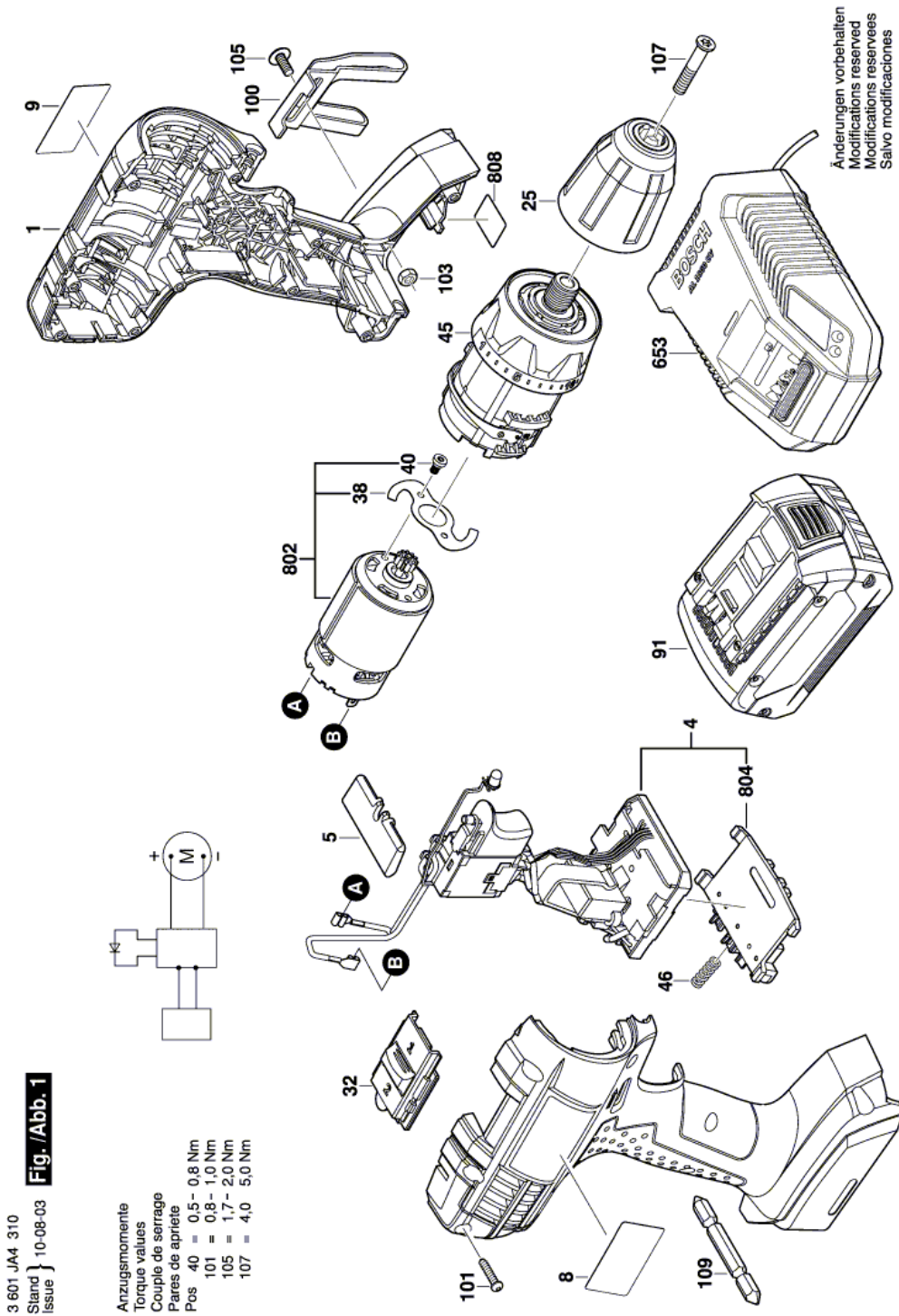
[www.powertools-aftersaleservice.com](http://www.powertools-aftersaleservice.com)



**BOSCH**

Item	Part Number	Description	Illustration	Price	Quantity	Price Group
1	2 609 100 810	Housing BLUE	1	-,-	1	33
4	1 607 233 299	Electronics Module	1	-,-	1	44
5	2 609 100 863	Lever	1	-,-	1	10
8	2 609 132 776	Warning Label	1	-,-	1	13
9	2 609 132 683	Manufacturer's nameplate COMPACT 18V	1	-,-	1	13
25	2 609 110 799	Keyless Chuck 10 MM	1	-,-	1	34
32	2 609 199 251	Slide Switch	1	-,-	1	17
38	2 609 110 801	Tab Washer	1	-,-	1	12
40	2 609 110 802	Screw	1	-,-	2	10
45	2 609 199 255	Gear Box	1	-,-	1	47
46	1 609 280 477	Compression Spring	1	-,-	1	11
91	2 607 336 189	Slide-In Accu Package 18V, 1,3Ah, LI, MS	1	-,-	1	48
100	2 609 110 956	Clip	1	-,-	1	20
101	2 609 110 201	Torx Flat-Head Screw 3x16	1	-,-	10	10
103	2 609 110 835	Nut	1	-,-	2	10
105	2 609 110 834	Screw	1	-,-	1	10
107	2 609 110 635	Pan head screw M 6x30	1	-,-	1	11
109	2 609 110 342	Screwdriver Blade	1	-,-	1	13
653	2 607 225 429	Fast Charger USA 120/10,8-18V, 1h	1	-,-	1	41
802	2 609 199 273	DC motor 18V	1	-,-	1	42
804	1 609 280 478	Contact retainer	1	-,-	1	26
808	2 609 132 790	Nameplate	1	-,-	1	13

Illustration - Type E



Information subject to change without further notice.