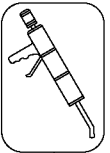
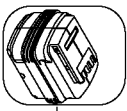


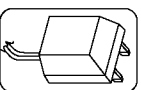
856



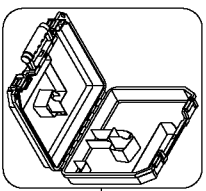
800



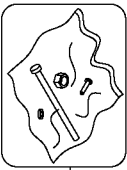
866



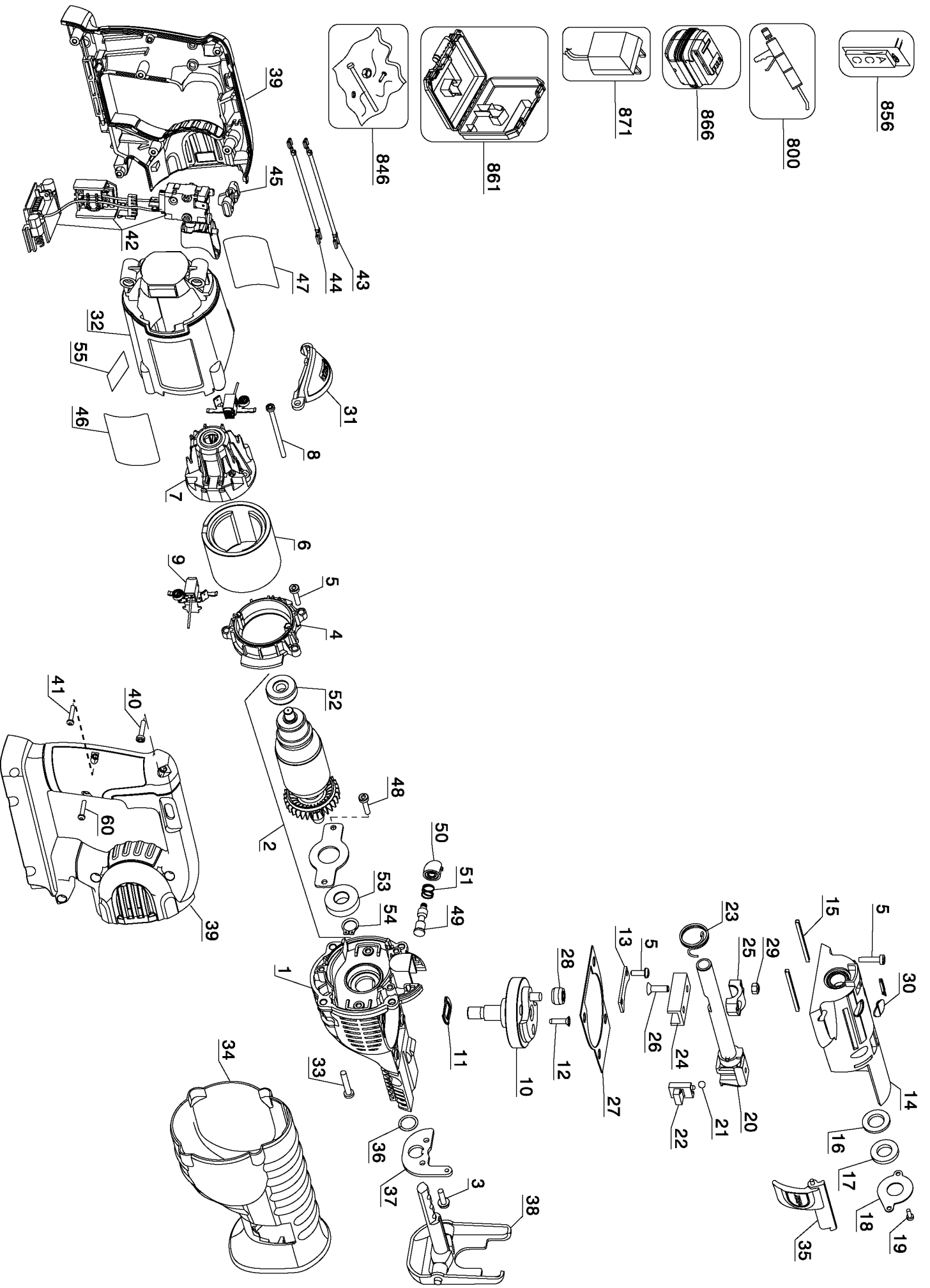
871



861



846



## Parts List for DC315K Type 1

Item Number	Part Number	Description	Qty Required
1	613138-00SV	GEAR CASE ASSY.	1
2	629923-28	ARMATURE&BRGS.	1
3	142940-00	SCREW	2
4	613137-00	FAN BAFFLE	1
5	613619-00	SCREW,THD.FORM	9
6	611202-00SV	MAGNET RING	1
7	610107-00	BEARING SUPPORT	1
8	330019-25	SCREW,THD.FORM	2
9	610126-00	BRUSH BOX	2
10	615940-00SV	GEAR & SPINDLE	1
11	619618-00	WAVY WASHER	1
12	622484-00	FLAT HD SCREW	3
13	621173-00	SUPPORT PLATE	1
14	N027851	GEARCASE COVER	1
15	621979-00	WEAR STRIP	2
16	618733-00	SHAFT SEAL	1
17	618477-00	FELT SEAL	1
18	N020720	SEAL PLATE	1
19	330045-43	SCREW,TAPTITE	1
20	N026647	SHAFT SERVICE KIT	1
21	000903-00	BALL	1
22	622647-00	SLIDER	1
23	622659-00	TORSION SPRING	1
24	N026647	SHAFT SERVICE KIT	1
25	617000-00	SADDLE	1
26	622486-00	FLAT HD SCREW	2
27	N063272	GASKET	1

## Parts List for DC315K Type 1

Item Number	Part Number	Description	Qty Required
28	N021857	BEARING	1
29	622485-00	LOCKNUT	2
30	621927-00	COVER	2
31	630958-00	INSERT	1
32	629919-00	MOTOR HOUSING	1
33	330019-45	SCREW	4
34	N084697	BOOT	1
35	631014-28	LEVER ASSY.	1
36	50049-00	O RING	1
37	617008-00	BRACKET	1
38	623511-01	SHOE ASSEMBLY	1
39	000000-00	No Longer Available	1
40	330019-03	SCREW	6
41	682211-00	SCREW,TORX	1
42	645229-01SV	SWITCH ASSY	1
43	634813-00	LEADWIRE ASSY.	1
44	634651-00	LEADWIRE ASSY.	1
45	630830-00	LOCK-OFF BUTTON	1
46	632248-00	IDENT. LABEL	1
47	646005-00	NAMEPLATE	1
48	330045-45	SCREW	2
49	615983-00	LOCK PIN	1
50	617733-00	CAP	1
51	618427-00	SPRING	1
52	391032-00	BEARING & BOOT	1
53	330003-64	BALL BEARING	1
54	696060-00	SNAP RING	1

## Parts List for DC315K Type 1

Item Number	Part Number	Description	Qty Required
55	646547-00	WARNING LABEL	1
60	330019-03	SCREW	1
800	286436-00	GREASE	1
856	628977-00	BLADE PACK	1
861	648633-00	KITBOX	1
866	DC9280	BATTERY PACK	1
871	DC9000	CHARGER	1