

**#1 - RESERVOIR ASSY**,Qty Req in Model: 1  
**Part #:** 5140206-80 **Description:** RESERVOIR ASSY

**#2 - BALL VALVE**,Qty Req in Model: 1  
**Part #:** AB-9047091 **Description:** BALL VALVE

**#3 - PLUG**,Qty Req in Model: 1  
**Part #:** 5140227-81 **Description:** PLUG

**#5 - SAFETY VALVE**,Qty Req in Model: 1  
**Part #:** 5140227-82 **Description:** SAFETY VALVE

**#6 - CHECK VALVE**,Qty Req in Model: 1  
**Part #:** 5140206-61 **Description:** CHECK VALVE

**#7 - TUBING**,Qty Req in Model: 4  
**Part #:** AB-9417740 **Description:** TUBING

**#8 - SCREW**,Qty Req in Model: 4  
**Part #:** 5140227-84 **Description:** SCREW

**#9 - WASHER 8X24X2**,Qty Req in Model: 4  
**Part #:** AB-9412016 **Description:** WASHER 8X24X2

**#10 - RUBBER FOOT**,Qty Req in Model: 4  
**Part #:** AB-9038197 **Description:** RUBBER FOOT

**#11 - LOCK NUT**,Qty Req in Model: 4  
**Part #:** 5140206-71 **Description:** LOCK NUT

**#12 - BASE PLATE**,Qty Req in Model: 1  
**Part #:** 5140227-85 **Description:** BASE PLATE

**#13 - SCREW**,Qty Req in Model: 4  
**Part #:** 5140227-86 **Description:** SCREW

**#14 - COMPRESSION RING**,Qty Req in Model: 1  
**Part #:** 5140227-87 **Description:** COMPRESSION RING

**#15 - FLANGE NUT**,Qty Req in Model: 2  
**Part #:** 5140227-88 **Description:** FLANGE NUT

**#16 - NIPPLE CLOSE 1/4-18**,Qty Req in Model: 1  
**Part #:** AB-9050628 **Description:** NIPPLE CLOSE 1/4-18

**#17 - REDUCER**,Qty Req in Model: 1  
**Part #:** 5140028-10 **Description:** REDUCER

**#18 - GAUGE**,Qty Req in Model: 2  
**Part #:** 5140206-62 **Description:** GAUGE

**#19 - PUMP**,Qty Req in Model: 1  
**Part #:** 5140227-89 **Description:** PUMP

**#21 - POWER CORD**,Qty Req in Model: 1  
**Part #:** 5140206-66 **Description:** POWER CORD

**#22 - DELIVERY PIPE**,Qty Req in Model: 1

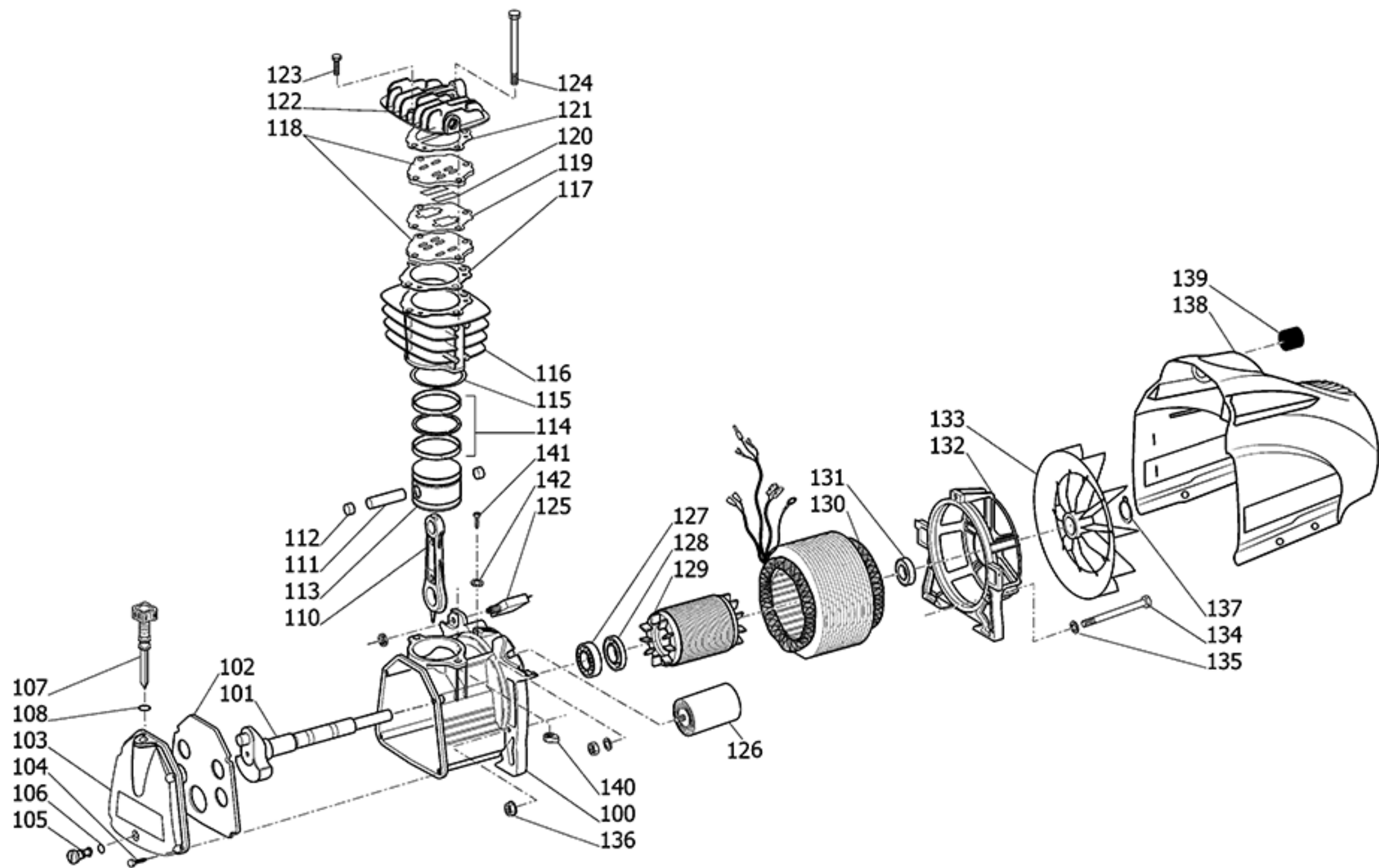
**Part #:** 5140227-90 **Description:** DELIVERY PIPE

**#23 - JOINT**,Qty Req in Model: 1

**Part #:** 5140227-91 **Description:** JOINT

**#24 - LOCKNUT**,Qty Req in Model: 1

**Part #:** 5140227-92 **Description:** LOCKNUT



**#100 - CRANKCASE**,Qty Req in Model: 1

**Part #:** 5140227-93 **Description:** CRANKCASE

**#101 - CRANKSHAFT**,Qty Req in Model: 1

**Part #:** 5140227-94 **Description:** CRANKSHAFT

**#102 - COVER**,Qty Req in Model: 1

**Part #:** 5140227-95 **Description:** COVER

**#103 - FRONT COVER**,Qty Req in Model: 1

**Part #:** 5140228-20 **Description:** FRONT COVER

**#104 - TAPPING SCREW**,Qty Req in Model: 4

**Part #:** 5140227-97 **Description:** TAPPING SCREW

**#105 - SCREW**,Qty Req in Model: 1

**Part #:** 5140227-98 **Description:** SCREW

**#106 - O-RING**,Qty Req in Model: 1

**Part #:** 5140206-48 **Description:** O-RING

**#107 - DIPSTICK**,Qty Req in Model: 1

**Part #:** AB-4105028 **Description:** DIPSTICK

**#108 - O-RING**,Qty Req in Model: 1

**Part #:** 5140206-45 **Description:** O-RING

**#110 - CONNECTING ROD**,Qty Req in Model: 1

**Part #:** 5140228-02 **Description:** CONNECTING  
ROD

**#111 - PISTON PIN**,Qty Req in Model: 1

**Part #:** 5140228-03 **Description:** PISTON PIN

**#112 - CIRCLIP**,Qty Req in Model: 2

**Part #:** 5140228-04 **Description:** CIRCLIP

**#113 - PISTON**,Qty Req in Model: 1

**Part #:** 5140228-05 **Description:** PISTON

**#114 - PISTON RING KIT**,Qty Req in Model: 1

**Part #:** 5130084-01 **Description:** PISTON RING KIT

**#115 - O-RING**,Qty Req in Model: 1

**Part #:** 5140228-06 **Description:** O-RING

**#116 - CYLINDER**,Qty Req in Model: 1

**Part #:** 5140228-07 **Description:** CYLINDER

**#117 - GASKET**,Qty Req in Model: 1

**Part #:** 5140228-08 **Description:** GASKET

**#118 - VALVE SEAT**,Qty Req in Model: 2

**Part #:** 5140228-09 **Description:** VALVE SEAT

**#119 - GASKET**,Qty Req in Model: 1

**Part #:** 5140228-10 **Description:** GASKET

**#120 - VALVE BLADE**,Qty Req in Model: 2

**Part #:** 5140206-33 **Description:** VALVE BLADE

**#121 - HEAD GASKET**,Qty Req in Model: 1

**Part #:** 5140228-11 **Description:** HEAD GASKET

**#122 - CYLINDER HEAD**,Qty Req in Model: 1

**Part #:** 5140228-12 **Description:** CYLINDER HEAD

**#123 - SCREW**,Qty Req in Model: 2

**Part #:** 5140228-13 **Description:** SCREW

**#124 - SCREW**,Qty Req in Model: 2

**Part #:** 5140228-14 **Description:** SCREW

**#125 - THERMAL BREAKER**,Qty Req in Model: 1

**Part #:** 5140206-54 **Description:** THERMAL  
BREAKER

**#126 - CAPACITOR**,Qty Req in Model: 1

**Part #:** 5140206-43 **Description:** CAPACITOR

**#127 - BEARING**,Qty Req in Model: 1

**Part #:** 5140228-16 **Description:** BEARING

**#128 - OIL SEAL**,Qty Req in Model: 1

**Part #:** 5140228-17 **Description:** OIL SEAL

**#129 - ROTOR**,Qty Req in Model: 1

**Part #:** 5140228-18 **Description:** ROTOR

**#130 - STATOR**,Qty Req in Model: 1

**Part #:** 5140228-19 **Description:** STATOR

**#131 - BEARING**,Qty Req in Model: 1

**Part #:** 5140206-49 **Description:** BEARING

**#132 - REAR COVER**,Qty Req in Model: 1

**Part #:** 5140227-96 **Description:** REAR COVER

**#133 - FAN**,Qty Req in Model: 1

**Part #:** AB-4105029 **Description:** FAN

**#134 - SCREW**,Qty Req in Model: 3

**Part #:** 5140228-21 **Description:** SCREW

**#135 - SPRING WASHER**,Qty Req in Model: 3

**Part #:** 5140228-22 **Description:** SPRING WASHER

**#136 - FLANGE NUT**,Qty Req in Model: 3

**Part #:** 5140228-23 **Description:** FLANGE NUT

**#137 - CIRCLIP**,Qty Req in Model: 1

**Part #:** 5140228-24 **Description:** CIRCLIP

**#138 - SHROUD**,Qty Req in Model: 1

**Part #:** 5140228-25 **Description:** SHROUD

**#139 - AIR FILTER**,Qty Req in Model: 1

**Part #:** 5140228-26 **Description:** AIR FILTER

**#140 - NUT**,Qty Req in Model: 2

**Part #:** 5140228-27 **Description:** NUT

**#141 - TAPPING SCREW**,Qty Req in Model: 1

**Part #:** 5140228-28 **Description:** TAPPING SCREW

**#142 - SPRING WASHER**, Qty Req in Model: 1

**Part #:** 5140228-29 **Description:** SPRING WASHER