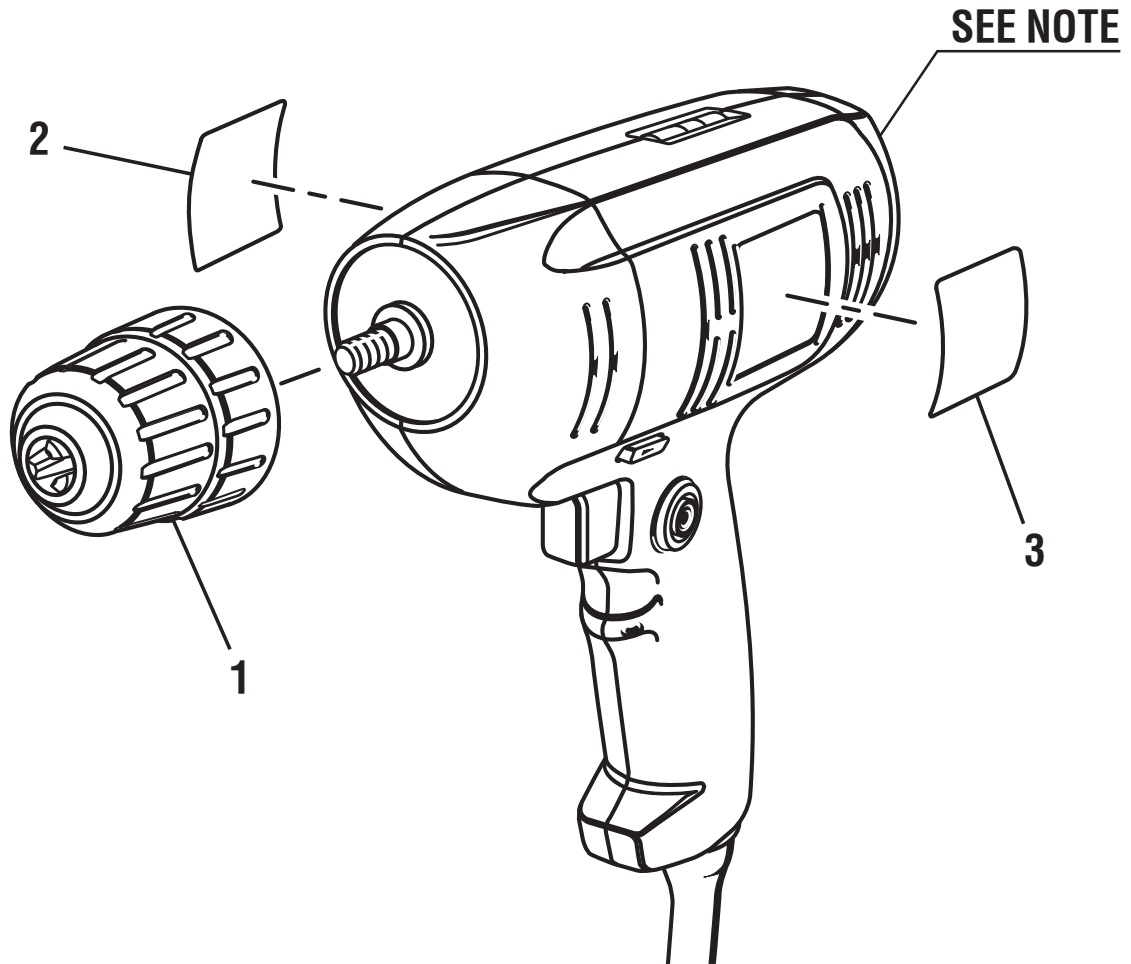


RYOBI 3/8 in. DRILL – MODEL NO. D40

The model number will be found on a label attached to the motor housing. Always mention the model number in all correspondence regarding your **3/8 in. DRILL** or when ordering repair parts.

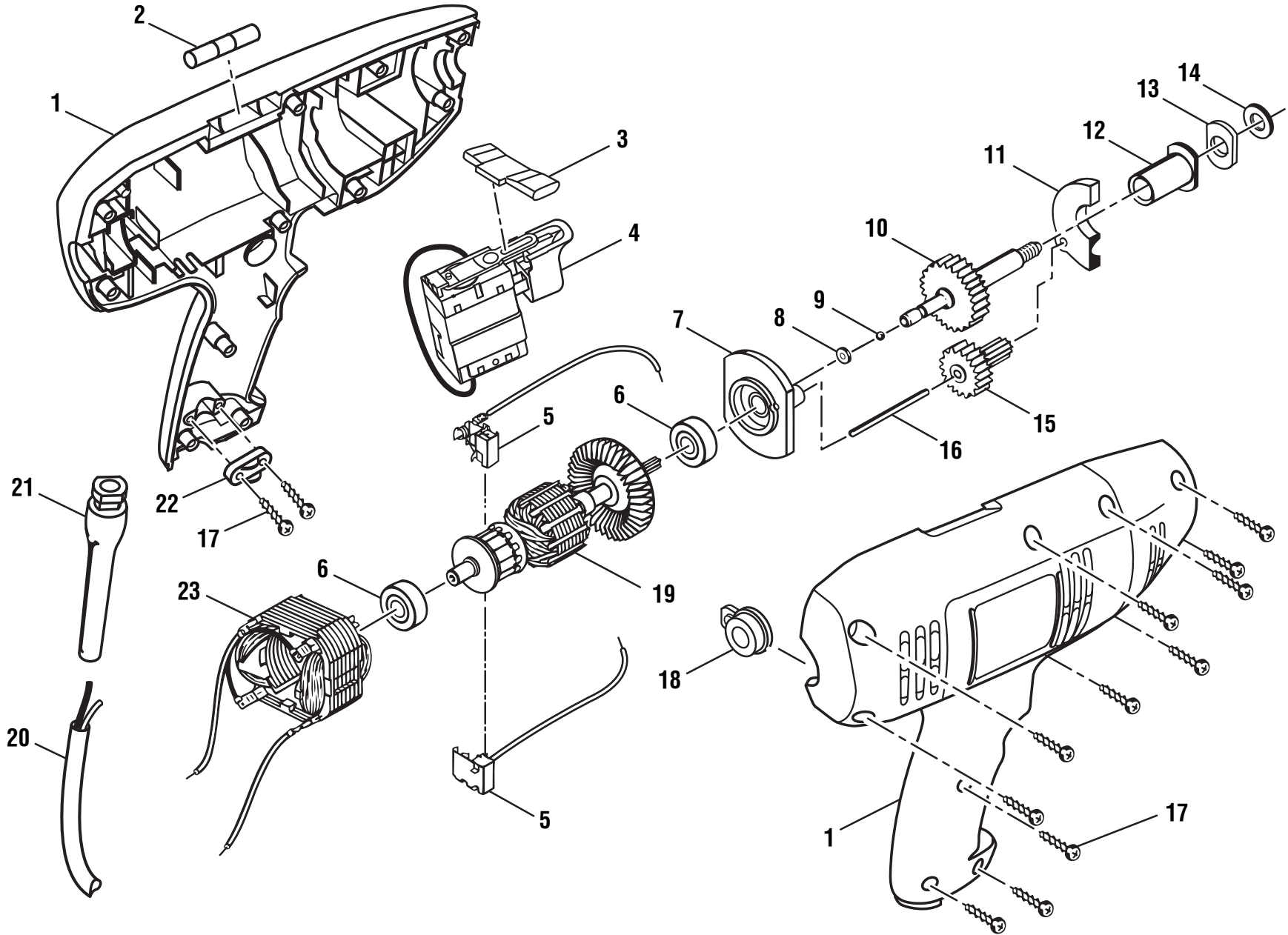


PARTS LIST

Key No.	Part Number	Description	Qty.
1	6903201	Chuck.....	1
2	9418678	Data Label.....	1
3	9418536	Logo Label	1

NOTE: The assembly shown represents an important part of the double insulated system. To avoid the possibility of alteration or damage to the system, service should be performed by your nearest Ryobi Authorized Service Center. For the service center nearest you call 1-800-525-2579.

RYOBI 3/8 in. DRILL - MODEL NO. D40



RYOBI 3/8 in. DRILL – MODEL NO. D40

The model number will be found on a label attached to the motor housing. Always mention the model number of your **3/8 in. DRILL** when requesting service or ordering repair parts.

PARTS LIST

KEY NO.	PART NUMBER	DESCRIPTION	QTY.
1	984419001	Housing Assembly.....	1
2	3000905	Level Assembly	1
3	5917601	Foward/Reverse Selector.....	1
4	7622601	Switch.....	1
5	2906906	Brush Assembly	2
6	6710903	Ball Bearing.....	2
7	6967101	Rear Bearing Block	1
8	6861601	Thrust Washer	1
9	6861701	Ball.....	1
10	984421001	Gear w/Spindle.....	1
11	690672002	Front Bearing Block.....	1
12	692233001	Sleeve Bearing	1
13	9030306	Felt Seal.....	1
14	6844703	Washer	1
15	984422001	Cluster Gear Assembly.....	1
16	6953701	Pin	1
17	660206042	Screw (M3.5 x 16 mm)	13
18	304152003	Rear Level Assembly.....	1
19	984590001	Armature w/Bearings (Includes Key No. 6)	1
20	7333002	Power Cord	1
21	5927402	Bend Relief.....	1
22	5917401	Cord Clamp.....	1
23	984589001	Field.....	1
	Not Shown:		
	300636070	Carrying Case.....	1
	983000032	Operator's Manual	
	9-30-11		
	(Rev:02)		

WARNING: Improper repair of a double insulated tool can result in damage to the double insulation system possibly causing electrical shock or electrocution. Any repairs requiring disassembly of your tool requires safety testing and should only be performed by a Ryobi Authorized Service Center. For the service center nearest you call 1-800-525-2579.