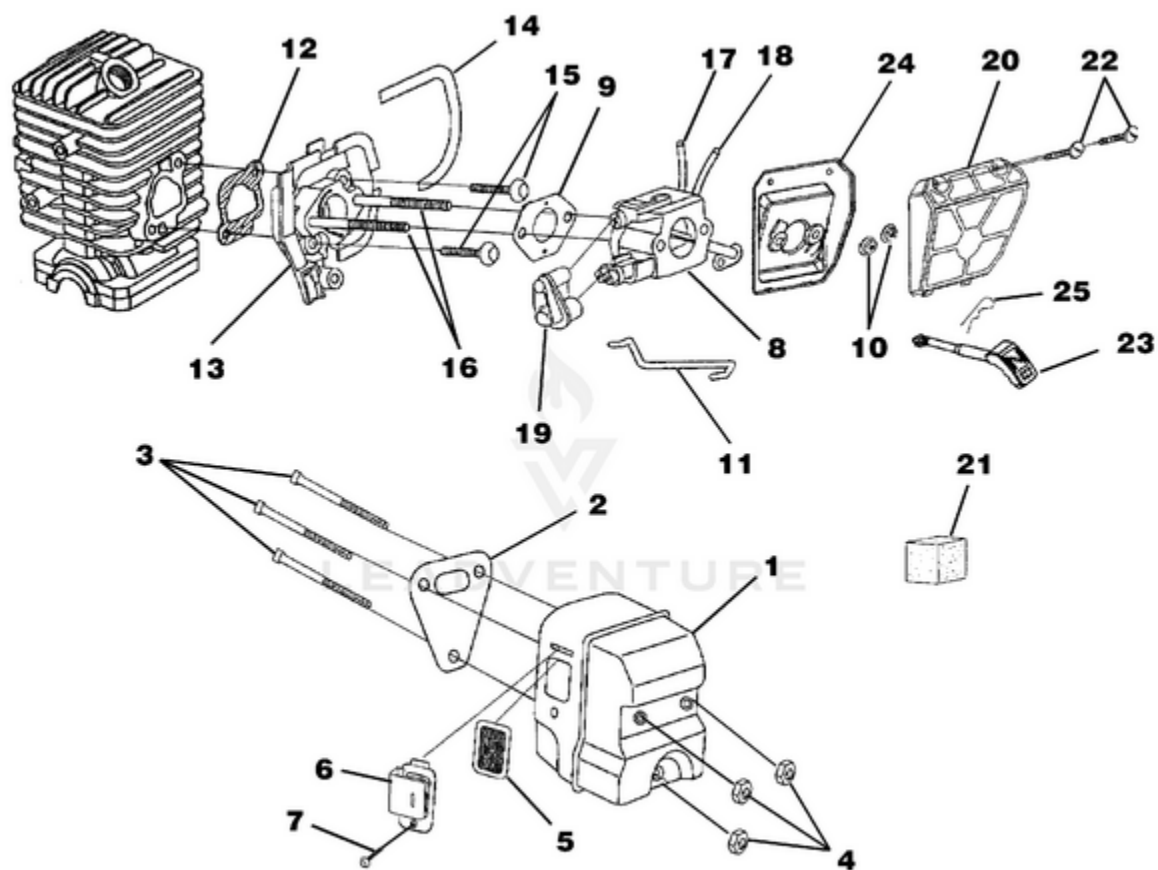


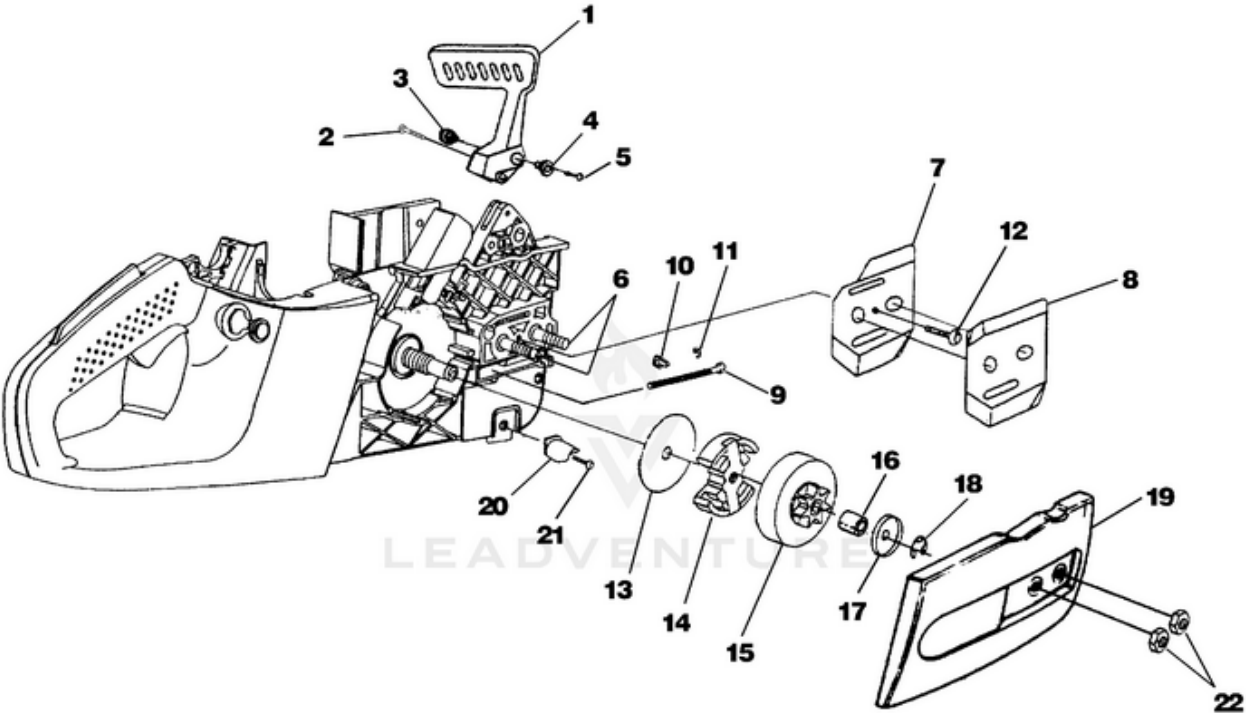
d3300c Chain Saw UT-10784 10784-UT d3300c Chain Saw UT-10784 d3300c Chain Saw - Carburetor -  
Muffler - Air Filter



Rendered by LeadVenture, Inc.

Ref #	Part #	Description	Qty
1	UP06752	Muffler Kit	1
2	UP04183	Muffler Gasket	1
3	UP04049	Screw-Square Hd.	3
4	UP04059	Nut-Locking Hex (10-32)	3
5	UP04203	Screen, Spark	1
6	UP04204	Deflector, Muffler	1
7	UP04244	Screw (8-32 x .312)	1
8	A09159	Carburetor Assembly	1
9	UP04094	Carburetor Gasket	1
10	UP04217	Flange Nut (10-24)	2
11	UP04230	Throttle Wire	1
12	UP04184	Gasket, Heat Dam	1
13	UP04173	Heat Dam	1
14	UP04191	Seal, Heat Dam	1
15	UP04084	Screw, Truss Hd. Taptite (10-24 x 7/8")	2
16	UP04189	Screw, Carburetor	2
17	UP04211	Fuel Line (Tank to Carburetor 8 1/2")	1
18	UP04209	Fuel Line (Carburetor to Purge Bulb 4")	1
19	UP04171	Carburetor Grommet	1
	UP06753	Air Filter Kit	1
20	UP04533	Air Filter Cover	1
21	UP04208	Pre Filter (In engine housing)	1
22	UP04235	Screw-Slotted Pan Hd. (8-16 x 5/8")	2
23	UP04213	Rod, Choke	1
24	UP04178	Air Filter Plate	1
25	UP04227	Spring Clip (Choke Rod)	1

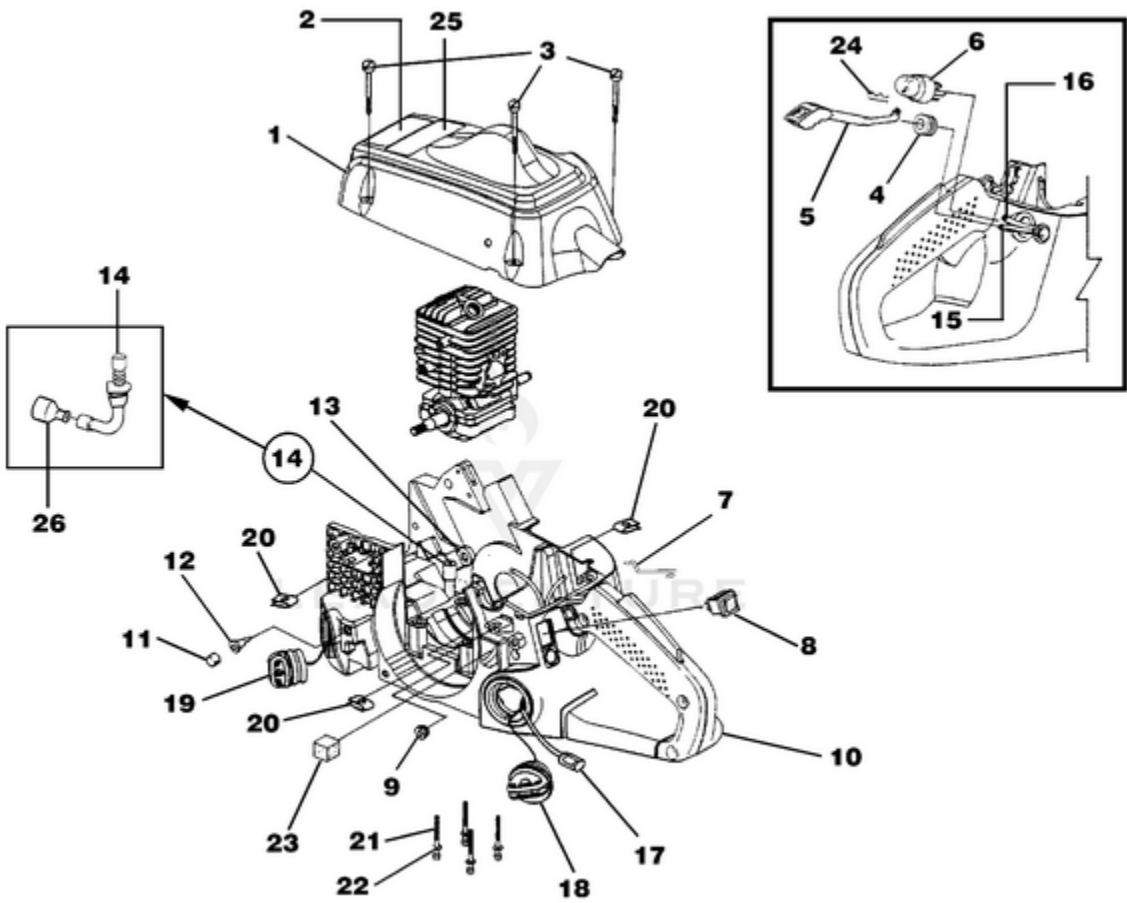
d3300c Chain Saw UT-10784 10784-UT d3300c Chain Saw UT-10784 d3300c Chain Saw - Clutch - Hand Guard - Drive Case Cover



Rendered by LeadVenture, Inc.

Ref #	Part #	Description	Qty
1	UP06568	Hand Guard Kit	1
2	UP03898	Screw-Thd. form. (#8-14 x .625)	1
3	UP04202	Pivot, L.H.	1
4	UP04201	Pivot, R.H.	1
5	UP04240	Screw, Hex Socket Hd. (8-32 x 5/8")	1
6	UP04180	Guide Bar Bolt	2
	UP06966	Guide Bar Adjusting Kit	1
7	UP04206	Plate, Guide Bar	1
8	UP04085	Plate, Guide Bar	1
9	UP04187	Screw, Guide Bar Adjusting	1
10	UP04186	Pin, Guide Bar Adjusting	1
11	UP04056	Ring, Retaining	1
12	UP04082	Screw, Thread Form., Plastite (6-19 x 1/2")	1
13	UP04182	Thrust Washer	1
14	UP06727	Clutch & Hardware	1
15	UP06967	Sprocket, Drum (3/8 Pitch)	1
16	UP04175	Bearing, Needle	1
17	UP04179	Washer, Cupped	1
18	UP04228	Ring, Retaining	1
19	UP06975	Drive Case Cover	1
20	UP04088	Stop, Chain	1
21	UP03900	Screw, Thread Form., Plastite (10-14 x 3/4")	1
22	UP04058	Nut, Hex	2

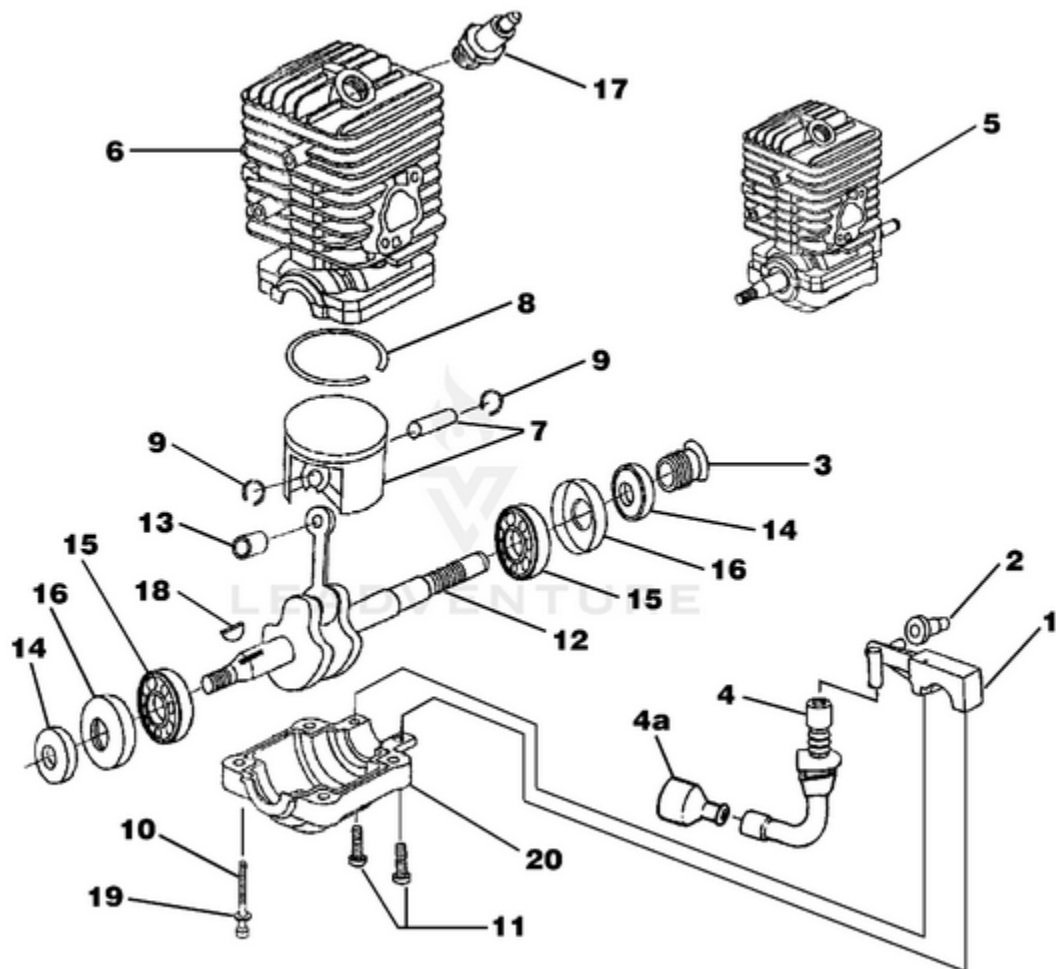
d3300c Chain Saw UT-10784 10784-UT d3300c Chain Saw UT-10784 d3300c Chain Saw - Engine Housing  
- Fuel Tank - Oil Tank



Rendered by LeadVenture, Inc.

<b>Ref #</b>	<b>Part #</b>	<b>Description</b>	<b>Qty</b>
1	A09162	Cylinder Cover Kit	1
2	UP04212	Safety Decal	1
3	UP04219	Screw-Slotted Pan Hd.	3
4	UP04052	Grommet	1
5	UP04213	Rod, Choke	1
6	UP04033	Bulb, Air Purge	1
7	UP04230	Throttle Wire	1
8	UP04197	Switch, Rocker	1
9	UP04215	Grommet-Split	1
10	UP06751	Engine Housing	1
11	UP04205	Element, Filter (Bronze)	2
12	UP04045	Duck Bill Valve	2
13	UP04185	Oil Outlet Grommet	1
14	UP04048	Oil Intake Tube	1
15	UP04210	Rubber Tubing (5 1/2")	1
16	UP04211	Rubber Tubing (8 1/2")	1
17	UP03871	Fuel Filter	1
18	DA07590	Fuel Cap w/ Retainer	1
19	DA07591	Oil Cap w/ Retainer	1
	UP04054	Oil Filter	1
	UP04180	Guide Bar Bolt	2
20	UP04221	Speed Nut ("U-Type")	3
21	UP04083	Screw, Cap-Socket Hd. (10-24 x 2")	4
22	UP04087	Washer	4
23	UP04208	Pre Filter	1
24	UP04227	Spring Clip (Choke Rod)	1
25	UP04225	Kickback-Decal	1
26	UP04054	Oil Filter	1

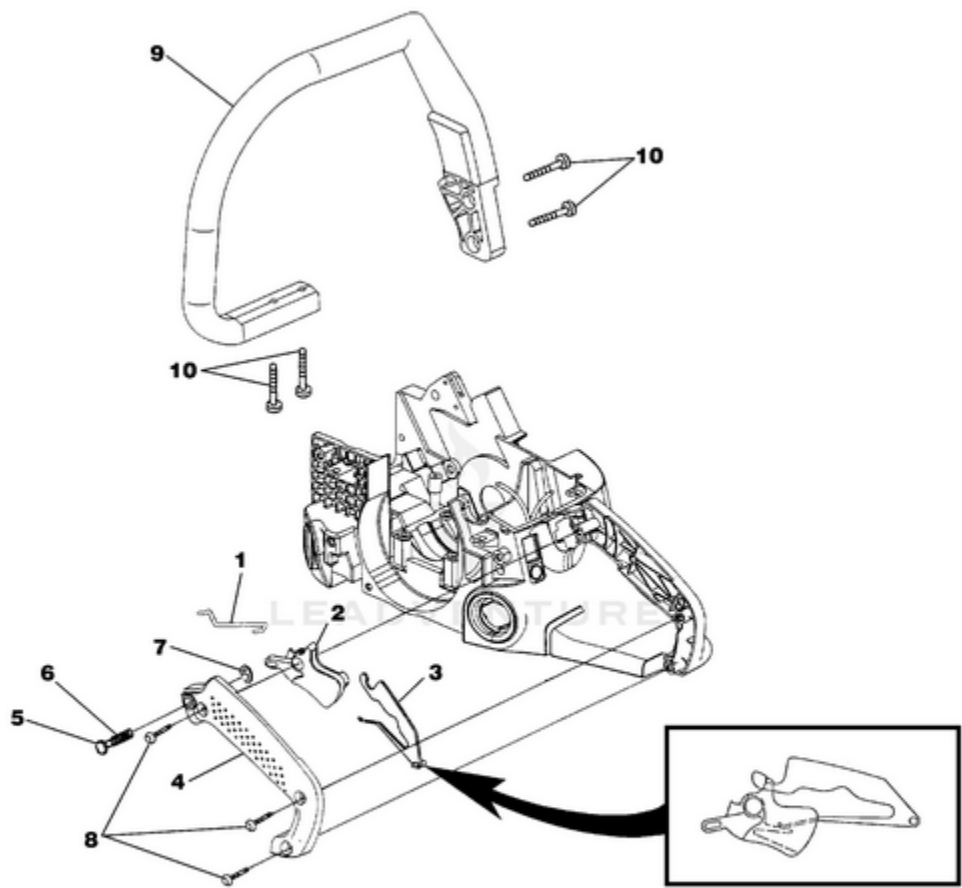
d3300c Chain Saw UT-10784 10784-UT d3300c Chain Saw UT-10784 d3300c Chain Saw - Engine Internal -  
Oil Pump



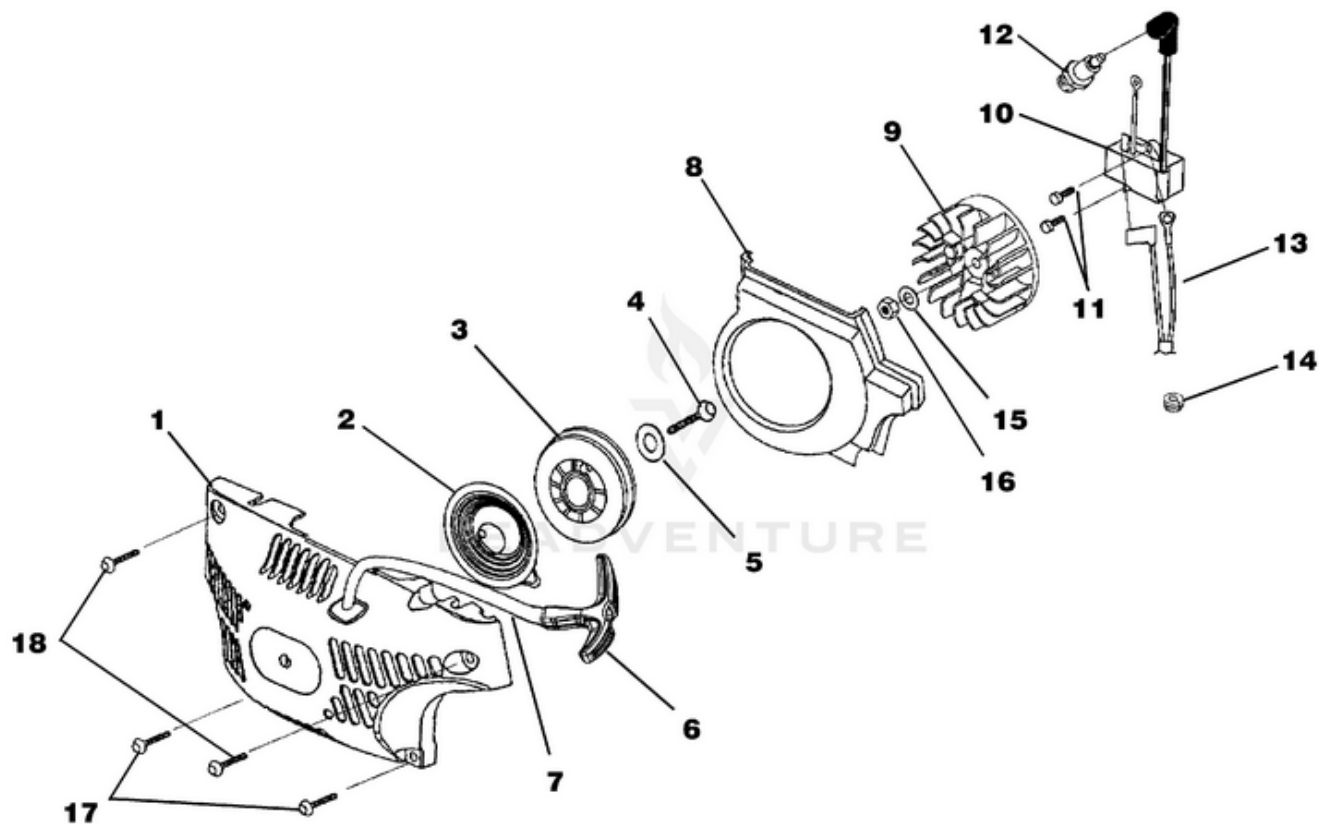
Rendered by LeadVenture, Inc.

<b>Ref #</b>	<b>Part #</b>	<b>Description</b>	<b>Qty</b>
1	UP06602	Oil Pump Kit	1
2	UP04185	Grommet, Oil Outlet	1
3	UP04188	Left Hand Worm	1
4	UP04048	Tube, Oil Intake	1
4A	UP04054	Oil Filter	1
5	UP03696	Short Block, Complete (33cc)	1
	UP03853	Short Block, Complete (38cc)	1
6	A08666	Cylinder Kit (33cc)	1
	A08667	Cylinder Kit (38cc)	1
	UP04183	Gasket, Muffler	1
	UP04184	Gasket, Heat Dam	1
	UP04094	Gasket, Carburetor	1
7	UP06971	Piston & Pin (33cc)	1
8	UP04177	Piston Ring	1
9	UP04051	Ring, Retaining	2
7	UP06972	Piston & Pin (38cc)	1
8	UP04190	Piston Ring	1
9	UP04051	Ring, Retaining	2
10	UP04083	Screw, Cap-Socket Hd. (10-24 x 2")	4
11	UP03898	Screw, Pan Hd., Plastite (8-16 x 5/8")	2
12	UP03587	Crankshaft & Rod Assembly	1
13	UP04174	Bearing, Needle	1
14	UP04047	Shaft Seal	2
15	UP04176	Bearing & Rubber Case	2
16	UP04046	Rubber Case	1
17	UP04093	Spark Plug	1
18	UP03874	Woodruff Key	1
19	UP04087	Washer	4
20	UP04172	Lower Crankcase	1





<b>Ref #</b>	<b>Part #</b>	<b>Description</b>	<b>Qty</b>
1	UP04230	Throttle Wire	1
2	UP04229	Trigger, Throttle	1
3	UP04196	Throttle Lock Out	1
4	UP06736	Handle Cover Kit	1
5	UP04243	Throttle Lock Pin	1
6	UP04226	Spring, Compression	1
7	UP04050	Ring, Retainer	1
8	UP03900	Screw, Thread Form., Plastite (10-14 x 3/4")	3
9	UP06974	Front Handle Kit	1
10	UP03895	Screw, Plastite (10-14 x 5/8")	4



Rendered by LeadVenture, Inc.

<b>Ref #</b>	<b>Part #</b>	<b>Description</b>	<b>Qty</b>
1	UP06749	Starter Kit	1
2	UP04092	Spring & Container	1
3	UP05460	Pulley, Starter	1
4	UP04237	Screw, Thread Form, Plastite (10-14 x 5/8")	1
5	UP04089	Washer, Retaining	1
6	UP04216	Grip, Starter	1
7	UP03911	Rope, Starter 46"	1
8	UP04192	Baffle, Fan Housing	1
9	UP04242	Rotor & Starter Pawl	1
10	A08676A	Ignition Kit	1
	UP05851	Ignition Kit	1
11	UP04086	Screw, Thread Form (8-32 x 5/8")	2
12	UP04093	Spark Plug	1
13	UP04222	Ignition Switch Harness	1
14	UP04215	Grommet, Wire Harness (Split)	1
15	UP04241	Washer, Flat	1
16	UP04081	Nut, Jam	1
17	UP04236	Screw, Truss Hd., Plastite (10-14 x 7/8")	2
18	UP04237	Screw, Truss Hd., Plastite (10-14 x 5/8")	2

No  
Diagram  
Available



LEADVENTURE

Parts List  
Only

<b>Ref #</b>	<b>Part #</b>	<b>Description</b>	<b>Qty</b>
	PT12371MD	Guide Bar 12" (Power Tip) (3/8")	
	H1N7245AH	Chain 12" (3/8")	
	PT14371MD	Guide Bar 14" (Power Tip) (3/8")	
	H1N7252AH	Chain 14" (3/8")	
	PT16371MD	Guide Bar 16" (Power Tip) (3/8")	
	H1N7256AH	Chain 16" (3/8")	
	PT18371MD	Guide Bar 18" (Power Tip) (3/8")	
	H1N7262AH	Chain 18" (3/8")	
	PS24823	Sealant Silicon	
	UP06561	Rubber tubing (10')	
	09207	Wrench - Combination	
	18416	Digital Tachometer	
	18453	Grease, Multi-purpose	
	94194	Compression Tester	
	UP07160	Bit, Torx T27	
	UP04562	Carry Case	
	UP06732	Bumper Spike Kit	