

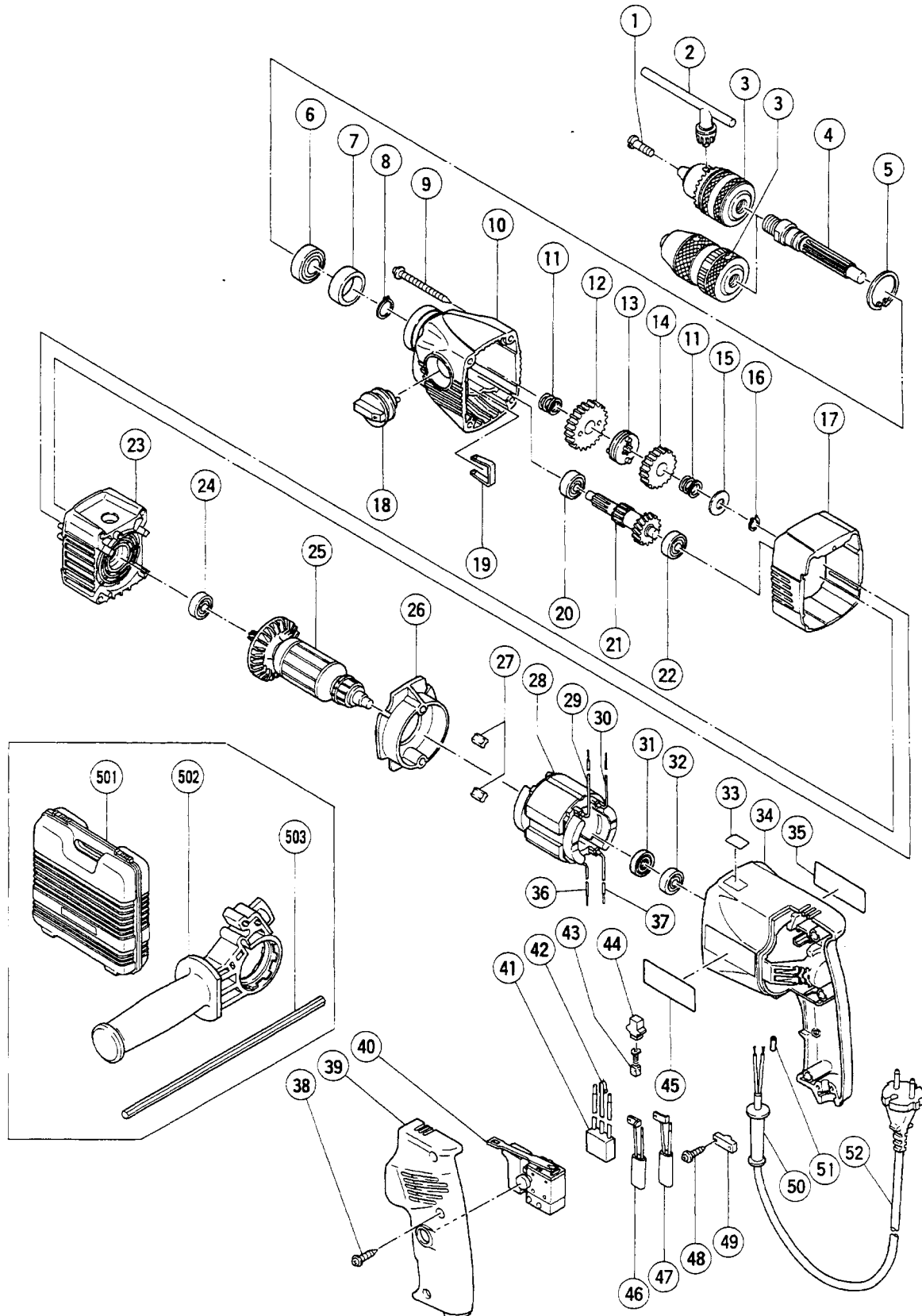
ELECTRIC TOOL PARTS LIST

■ DRILL

1998·6·30

Model D 13VB2

(E1)



PARTS

D 13VB2

ITEM NO.	CODE NO.	DESCRIPTION	NO. USED	REMARKS		
1	995-344	FLAT HD. SCREW (A) (LEFT HAND) M6X25	1			
2	930-515	CHUCK WRENCH 10G	1			
*	3	950-275	DRILL CHUCK 13VLR	1	INCLUD.2	
*	3	316-280	DRILL CHUCK 13VLN (W/O CHUCK WRENCH)	1		
	4	316-308	SPINDLE	1		
	5	948-001	RETAINING RING FOR D32 HOLE	1		
	6	600-2DD	BALL BEARING 6002DDUCMPS2S	1		
	7	316-307	DISTANCE RING	1		
	8	939-544	RETAINING RING FOR D15 SHAFT (10 PCS.)	1		
	9	305-701	TAPPING SCREW (W/FLANGE) D5X60	4		
	10	316-272	GEAR COVER	1		
	11	994-389	SPRING	2		
	12	994-383	LOW SPEED GEAR	1		
	13	316-297	CLUTCH DISK	1		
	14	994-384	HIGH SPEED GEAR	1		
	15	981-077	WASHER	1		
	16	992-805	RETAINING RING FOR D9 SHAFT	1		
	17	316-306	OUTER COVER	1		
	18	316-276	SHIFT LEVER	1		
	19	994-396	SHIFT SPRING	1		
	20	627-VVM	BALL BEARING 627VVMC2EPS2S	1		
	21	316-278	SECOND PINION	1		
	22	608-VVM	BALL BEARING 608VVMC2EPS2L	1		
	23	316-305	INNER COVER ASS'Y	1	INCLUD.22,24	
	24	608-DDM	BALL BEARING 608DDMC2EPS2S	1		
*	25	360-474U	ARMATURE ASS'Y 110V-115V	1	INCLUD.24,31,32	
*	25	360-474E	ARMATURE 220V-230V	1		
	26	314-879	FAN GUIDE ASS'Y	1	INCLUD.27	
	27	994-343	RUBBER BUSHING	2		
*	28	340-421C	STATOR 110V-115V	1		
*	28	340-421E	STATOR 220V-230V	1		
	29	314-914	INTERNAL WIRE (A) BLACK	1		
*	30	314-913	INTERNAL WIRE (A) GRAY	1	FOR GBR (110V),USA	
	31	316-785	DUST SEAL	1		
	32	608-VVM	BALL BEARING 608VVMC2EPS2L	1		
	33		LABEL (CE MARK)	1		
	34	314-889	HOUSING	1		
	35		NAME PLATE	1		
	36	314-912	INTERNAL WIRE (A) RED	1		
*	37	314-915	INTERNAL WIRE (A) WHITE	1	FOR GBR (110V),USA	
	38	301-653	TAPPING SCREW (W/FLANGE) D4X20 (BLACK)	3		
	39	314-891	HANDLE COVER	1		
*	40	314-916	SPEED CONTROL SWITCH (2P) 100V-115V	1		
*	40	314-921	SPEED CONTROL SWITCH (2P) 220V-240V	1		
	41	994-273	NOISE SUPPRESSOR	1		
	42	302-488	EARTH TERMINAL	1		
	43	999-041	CARBON BRUSH (1 PAIR)	2		
	44	955-203	BRUSH HOLDER	2		
	45		HITACHI LABEL	1		
*	46	314-922	CHOKE COIL (A) BLUE	1		
*	46	314-917	INTERNAL WIRE (B) BLUE	1	FOR USA	

* : ALTERNATIVE PARTS

6 - 98

