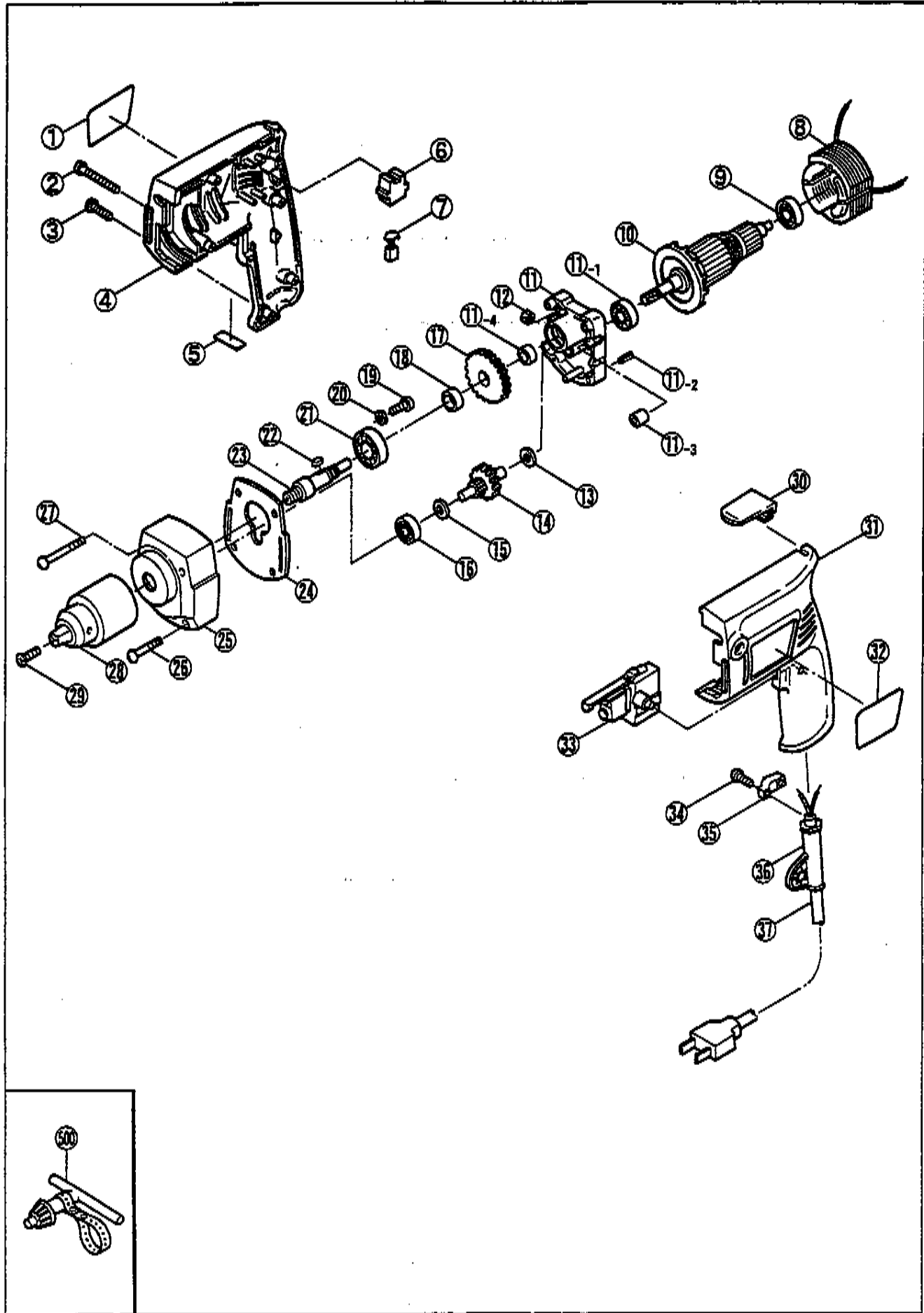


# ELECTRIC DRILL

## D-10PVR



## PARTS LIST FOR AFTER SALES SERVICE MODEL D10PVR

REF	PART NO.	DESCRIPTION	QTY	REF	PART NO.	DESCRIPTION	QTY
1	8911768	NAME PLATE	1	21	968305020	BALL BEARING #6001LLB	1
2	9060440	TAPPING SCREW (B) M4X40	2	22	6100226	PARALLEL KEY	1
3	9060418	TAPPING SCREW (B) M4X18	4	23	6100142	GEAR SHAFT	1
4	6080639	MOTOR HOUSING	1	24	6930029	PACKING	1
5	8920387	INDICATION LABEL	1	25	6820404	GEAR CASE	1
6	8570058	BRUSH HOLDER	2	26	9040430	TAPPING SCREW (S) M4X30	2
7	6540743	CARBON BRUSH SET	1	27	9040445	TAPPING SCREW (S) M4X45	2
8	6500981	FIELD COIL	1	28	8071573	3/8" DRILL CHUCK SET	1
9	622274001	BALL BEARING #608LLB	1	29	8130389	FLAT SCREW (L.H.T.) M5X13	1
10	6031232	ARMATURE	1	30	6151157	BELT CLIP	1
11	6080453	INNER COVER	1	31	6080639	MOTOR HOUSING	1
11-1	622274001	BALL BEARING #608LLB	1	32	6920404	"RYOBI MARK"	1
11-2	6120082	RUBBER KNOCK	1	33	6550088	VAR. & REVERSIBLE SWITCH	1
11-3	6760046	OILLESS METAL	1	34	9060418	TAPPING SCREW (B) M4X18	2
11-4	6760047	OILLESS METAL	1	35	6560055	CORD CLAMP	1
13	9580600	WASHER	1	36	6560084	CORD HOLDER	1
14	6050038	INTERMEDIATE GEAR	1	37	8520331	CORD ASS'Y AWG#18X2X2	1
15	9580600	WASHER	1	--	6530232	FASTEN SLEEVE	2
16	968305038	BALL BEARING #626LLB	1	--	069814081	OWNERS MANUAL	1
17	8200147	FINAL GEAR	1	STANDARD ACCESSORIES			
18	8900312	COLLAR	1	500	8241103	CHUCK KEY	1
19	9060416	TAPPING SCREW (B) M4X16	3				
20	9570400	WASHER	3				

**SERVICE NOTES:**

